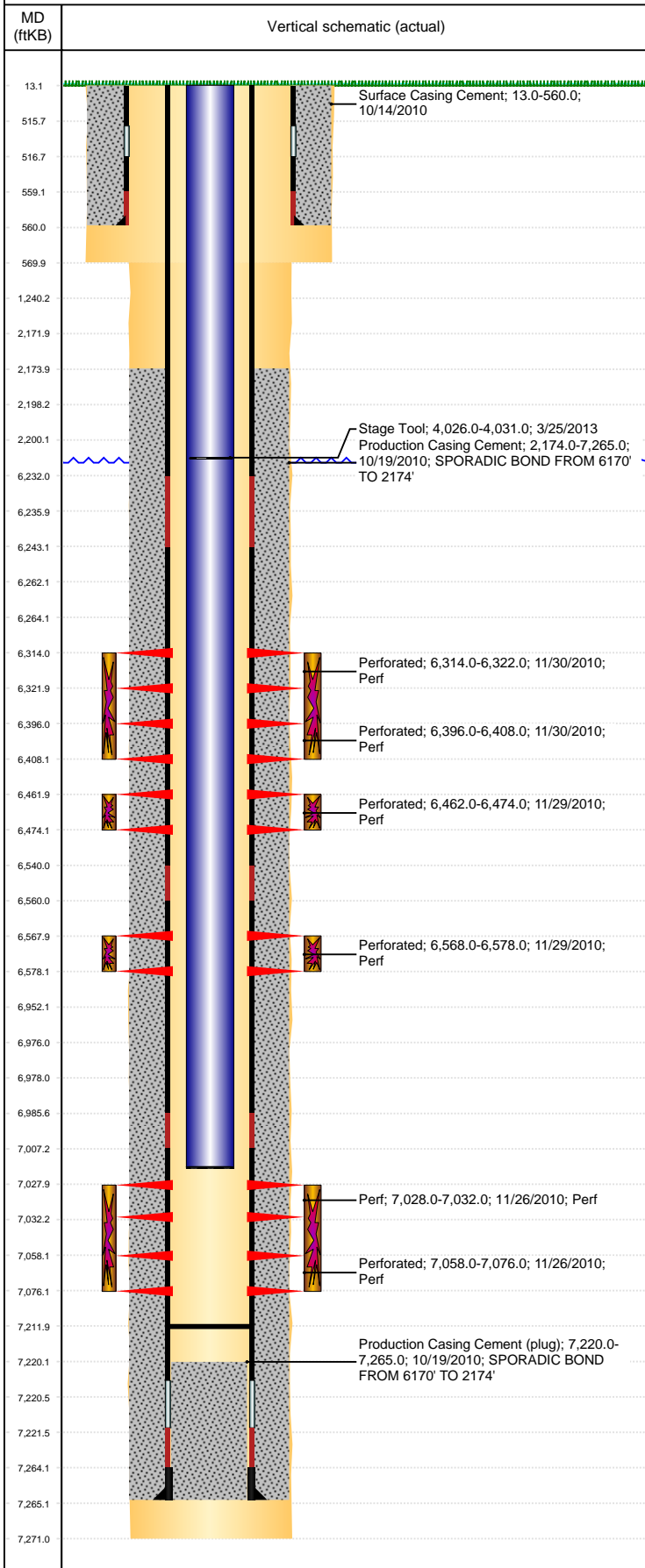


Well Name: 70 RANCH USX BB27-17

VERTICAL, ORIGINAL HOLE, 9/3/2019 9:01:05 AM



Well Header									
API 05-123-30849		Business Unit DJ BASIN			District 15		Well Config VERTICAL		
KB - GL / MSL (ft... 13.00		Spud Date 10/14/2010		P & A Date		Well Production Status PR			SoRT No
Comment									
Surface Location (Congressional)									
Qtr 3 NE	Qtr 4 NE	Section 27	Twنشp 5	Twنش... N	Range 63	Rng E/... W	Actual Latitude (°) 40.37398110	Actual Longitude (°) -104.41690640	
Wellbore Sections									
Section Des			Size (in)			Act Top, MD (ftKB)		Act Btm, MD (ftKB)	
SURFACE			12 1/4			13		570	
PRODUCTION			7 7/8			570		7,271	
Casing Strings									
Csg Des			Run Date		OD (in)	Wt/Len (lb/ft)	Grade	Top, MD (ftKB)	MD (ftKB)
Surface			10/14/2010		8 5/8	24.00	J-55	13.0	560.0
Production			10/18/2010		4 1/2	11.60	M-80	13.0	7,265.0
Cement									
Des					Start Date		Top (ftKB)		Btm (ftKB)
Surface Casing Cement					10/14/2010		13.0		560.0
Production Casing Cement					10/19/2010		2,174.0		7,265.0
Zone Statuses									
Zone Name		Status Date	Status	Fluid Type	Job			Prod Method	
CODELL		12/2/2010	PR		DRILLING/COMPLETION - ORIGINAL, 10/13/201...				
NIOBRARA		12/2/2010	PR		DRILLING/COMPLETION - ORIGINAL, 10/13/201...				
J SAND		12/2/2010	PR		DRILLING/COMPLETION - ORIGINAL, 10/13/201...				
Perforation Data									
Linked Zone		Bnch/Stg	Entered Shot Total		Top (ftKB)		Btm (ftKB)		Date
NIOBRARA, ORIGINAL HOLE		A	24		6,314.00		6,322.00		11/30/2010
NIOBRARA, ORIGINAL HOLE		B	16		6,396.00		6,408.00		11/30/2010
NIOBRARA, ORIGINAL HOLE		C	24		6,462.00		6,474.00		11/29/2010
CODELL, ORIGINAL HOLE			40		6,568.00		6,578.00		11/29/2010
J SAND, ORIGINAL HOLE		01	16		7,028.00		7,032.00		11/26/2010
J SAND, ORIGINAL HOLE		02	72		7,058.00		7,076.00		11/26/2010
Stimulation Intervals									
Zone			Start Date			Top (ftKB)		Btm (ftKB)	
NIOBRARA, ORIGINAL HOLE			11/30/2010			6,314.0		6,408.0	
NIOBRARA, ORIGINAL HOLE			11/29/2010			6,462.0		6,474.0	
CODELL, ORIGINAL HOLE			11/29/2010			6,568.0		6,578.0	
J SAND, ORIGINAL HOLE			11/29/2010			7,028.0		7,076.0	
Other In Hole									
Run Date		Des				OD (in)	Top (ftKB)		Btm (ftKB)
3/3/2016		Plunger Lift				1 7/8			
Logs									
Date		Type					Top, MD (ftKB)		Btm, MD (ftKB)
10/18/2010		SPECTRAL DENSITY/Pe/DSN NEUTRON/SP/ARRAY COMPENSATED TRUE RESISTIVITY					560.0		7,250.0
10/18/2010		SPECTRAL GAMMA RAY					560.0		7,250.0
10/27/2010		CBL/CCL/GR/VDL					2,100.0		7,210.0
Plug Back Total Depths									
Date		Type		Com					Depth (ftKB)
10/27/2010		FILL		DEPTH LOGGER					7,210.0
7/10/2012		FILL		TAGGED FILL					7,212.0