



Dual Induction Focused Log

FILE NO.	COMPANY - MARLIN OIL COMPANY	WELL - WALKER #2	FIELD - WILDCAT	COUNTY - PUEBLO	STATE - COLORADO
	LOCATION: NE SE	SEC 4	TWP 24S	RGE 46W	
Permanent Datum	G.L.				
Log Measured from	K.B.				
Drilling Measured from	K.B.				
Date	8-1-82				
Run No.	ONE				
Service Order	57308				
Depth - Driller	5200				
Depth - Logger	5202				
Bottom Logged Interval	5200				
Top Logged Interval	405				
Casing - Driller	8 5/8 @ 375		@	@	
Casing - Logger	405				
Bt Size	7 7/8				
Type Fluid in Hole	CHEM GEL				
Density and Viscosity	9.1 41				
pH and Fluid Loss	9.5 10.8cc				
Source of Sample	FLOWLINE				
Rm @ Meas. Temp.	0.96 @ 92 °F		@	@	
Rm @ Meas. Temp.	0.73 @ 90 °F		@	@	
Rmc @ Meas. Temp.	1.21 @ 90 °F		@	@	
Source of Rm and Rmc	MEAS MEAS				
Rm @ BHT	0.62 @ 147 F		@	@	
Time Since Circ.	2 HOURS				
Max. Rec. Temp., Deg. F.	142 F				
Equip. No. and Location	6376 FM				
Recorded By	J.C. McDONNELL				
Witnessed By	MR. F. HATTON				

Remarks:

Run No.		From	To	REC.	Conductivity Scale (mmho/cm)	Resistivity Scale (ohm m/m)	Acoustic Scale (μ sec/ft.)	GR Scale (API Units)	Caliper Scale (Inches)	Rwa Scale Ohm m	Δt ma Value μ sec/ft.	Δt Shale μ sec/ft.	S.P. Scale (Millivolts)
1	5202	405			0-1000	0-50							
GENERAL													
LOGGING DATA													
LOGGING SCALES													
EQUIPMENT DATA													
Tool Series No.		1503		G/R		CALIPER		DIFL		G/R		CALIPER	
Serial No.		60089		G/R		CALIPER		DIFL		G/R		CALIPER	
Diameter		3 5/8		G/R		CALIPER		DIFL		G/R		CALIPER	
Tool Position		H.M.F.		G/R		CALIPER		DIFL		G/R		CALIPER	
Detec. Model No.		3752		G/R		CALIPER		DIFL		G/R		CALIPER	
Panel Series No.		41368		G/R		CALIPER		DIFL		G/R		CALIPER	
Serial No.				G/R		CALIPER		DIFL		G/R		CALIPER	
Remarks:													

**BEST IMAGE
AVAILABLE**

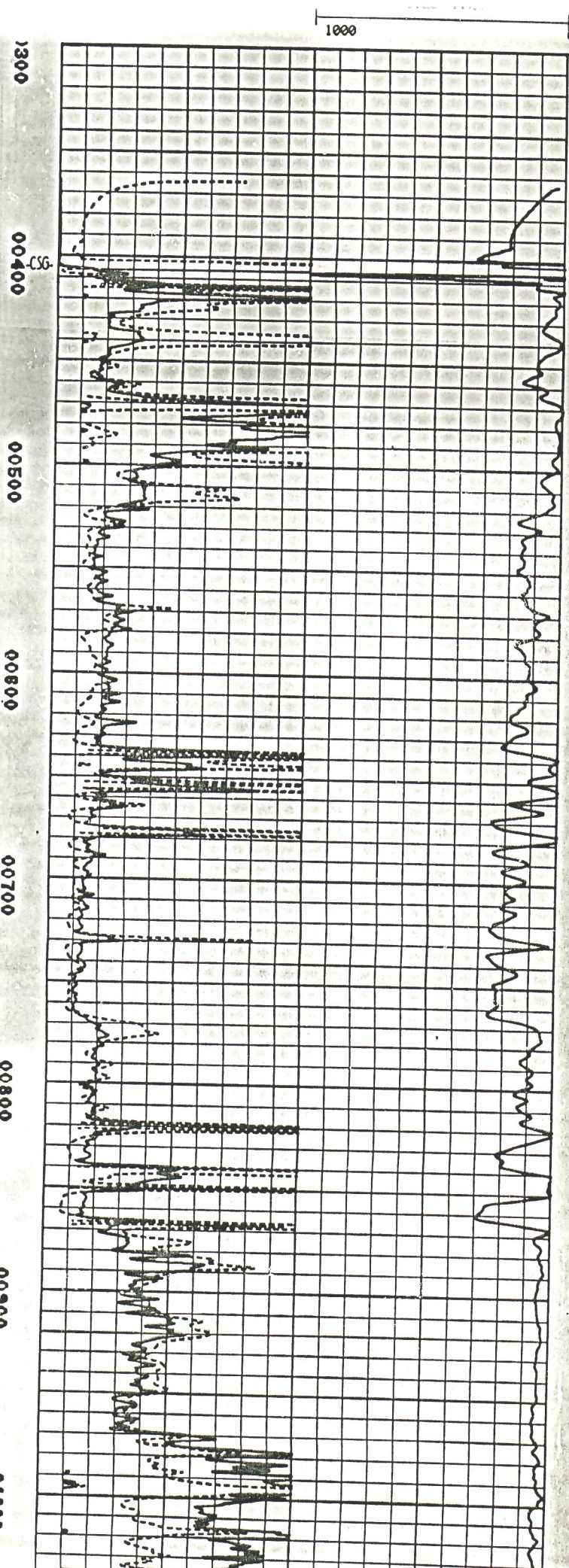
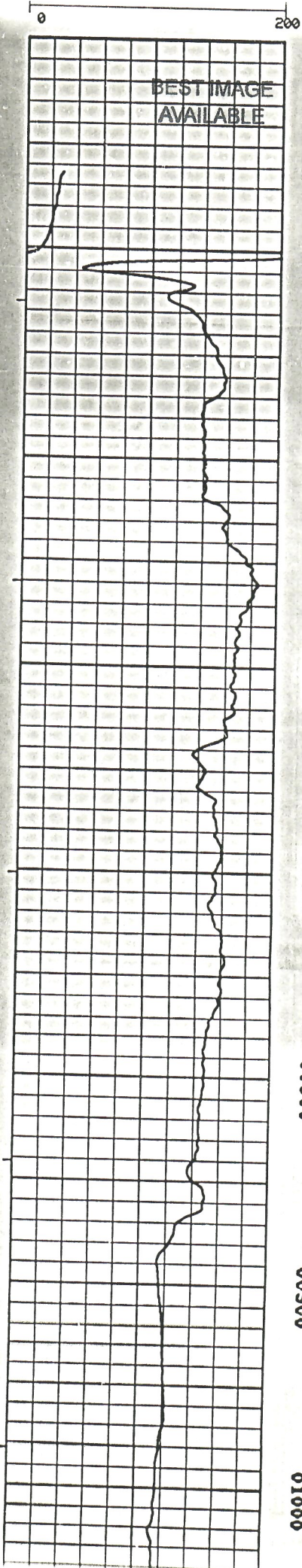
WALSH OIL COMPANY WALKER NO. 2
PRODUCERS CO. COLORADO ENGR: J.C. McDONNELL
SERVICE K 2117 FILE 3



00694248

(11111) 1702

ROLI (CHMM)



BEST IMAGE
AVAILABLE

01000

01100

01200

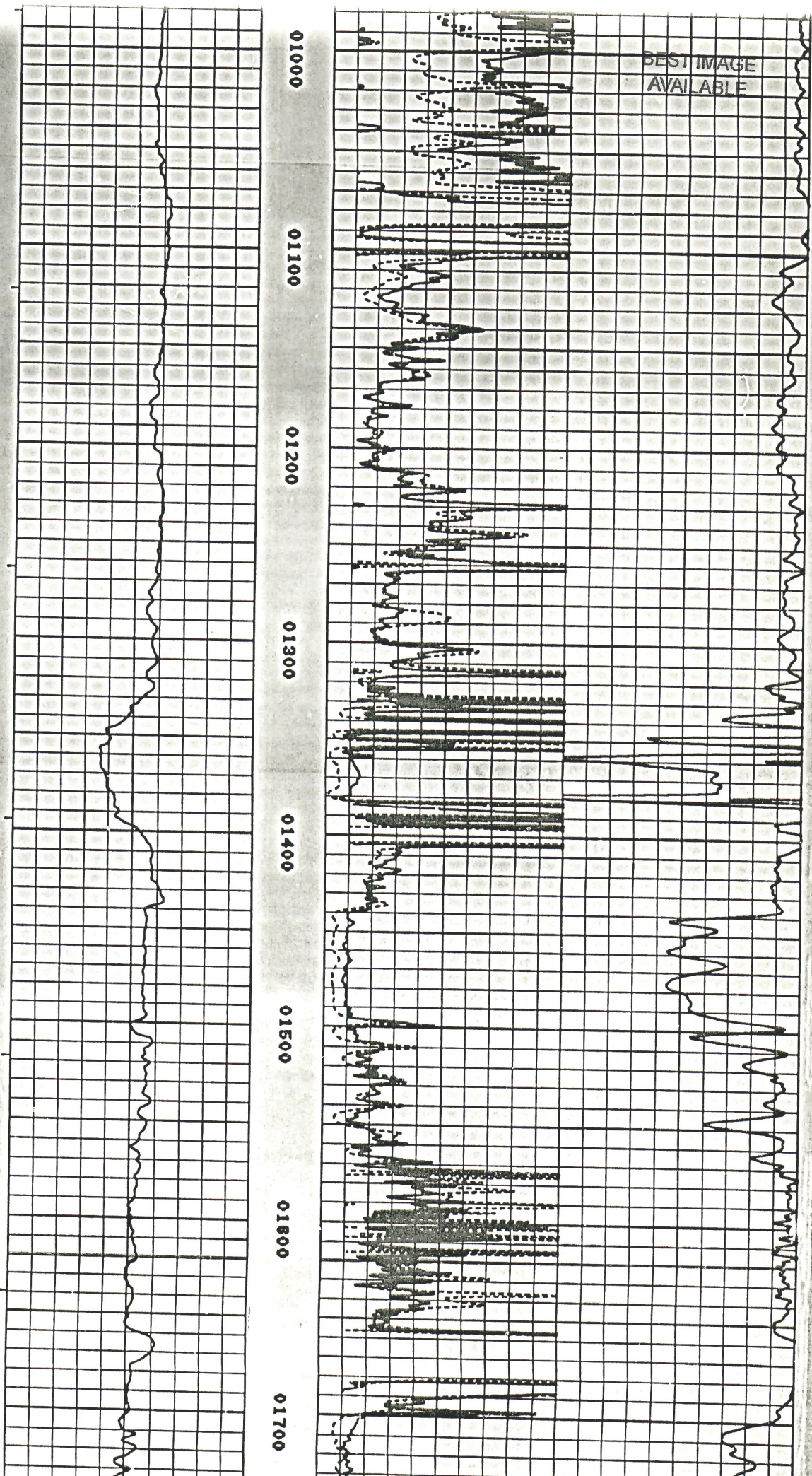
01300


01400

01500

01600

01700





	QTR	QTR	SEC	TWNS	RANGE	PM	NAME	DEPTH	TPERF	BPERF
A	SW	SW	01	240S	0460W	S	BURNETT JIM & MAYSEL	470		
B	SW	NE	02	240S	0460W	S	WALKER LAND CATTLE CORP	250		
C	NE	SE	08	240S	0460W	S	RAGSDALE HOWARD	73		
D	NE	SE	08	240S	0460W	S	RAGSDALE HOWARD	76		
E	NE	SE	08	240S	0460W	S	RAGSDALE HOWARD	78		
F	SW	NW	09	240S	0460W	S	LAMAR CITY OF	91		
G	NE	NE	11	240S	0460W	S	BURNETT JIM	285		
H	NW	NE	14	240S	0460W	S	NEUHOLD RANCH INC	345	305	345
I	NW	NE	17	240S	0460W	S	GRAHAM FARMS INC	360		
J	NE	NE	18	240S	0460W	S	COOK JO JIMMIE	600		
K	SW	SE	19	240S	0460W	S	COOK JO J	709		
L	NE	NW	20	240S	0460W	S	GRAHAM FARMS INC	160		
M	NW	SE	21	240S	0460W	S	LAMAR CITY OF	73		
N	NW	NW	26	240S	0460W	S	HINES F			
O	NE	NE	28	240S	0460W	S	LAMAR CITY OF	81		
P	SE	SW	29	240S	0460W	S	GRAHAM FARMS INC	301		
Q	SE	NW	31	240S	0460W	S	HOFFMAN DONALD	375		
R	NW	NW	32	240S	0460W	S	AMERICAN TELEPHONE &TELEGRA	303		
S	NW	NW	32	240S	0460W	S	AMERICAN TELEPHONE &TELEGRA	321		
T	NW	NW	32	240S	0460W	S	US AIR FORCE	325		

Letter=Choice | F10=Mark 1| PgUp/PgDn=±20 | UpAr/DnAr =±1 |Esc=Quit