



00693950

CERTIFICATE OF SURVEY

for
MICHIGAN, WISCONSIN PIPELINE CO.
Prowers County, Colorado

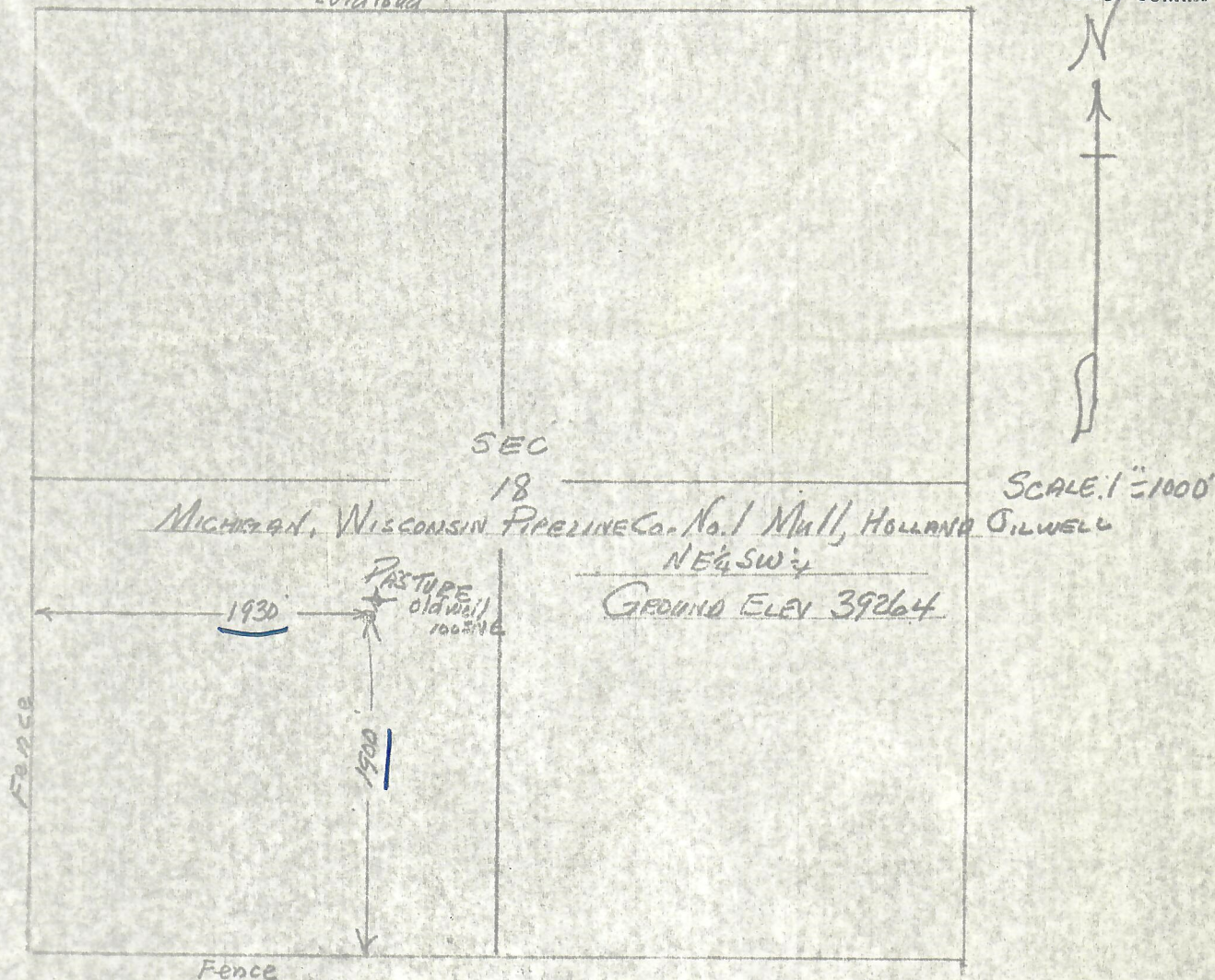
RECEIVED

AUG 25 1976

T24S R4SW 6PM

Old road

COLO. OIL & GAS CONS. COMM.



I hereby certify that the above plat is an accurate representation of a correct survey showing the location of Michigan, Wisconsin Pipeline Co. -No.1 Mull, Holland Oilwell in NE 1/4 SW 1/4 Sec. 18 T24S R4SW 6PM. The elevation of the ground at the stake is 3926.4 feet above sea level from U.S.G.S. Bench Mark.

Fort Morgan, Colorado
Aug. 6, 1976

David A. Adams
Registered Professional Engineer
State of Colorado

BEST IMAGE
AVAILABLE