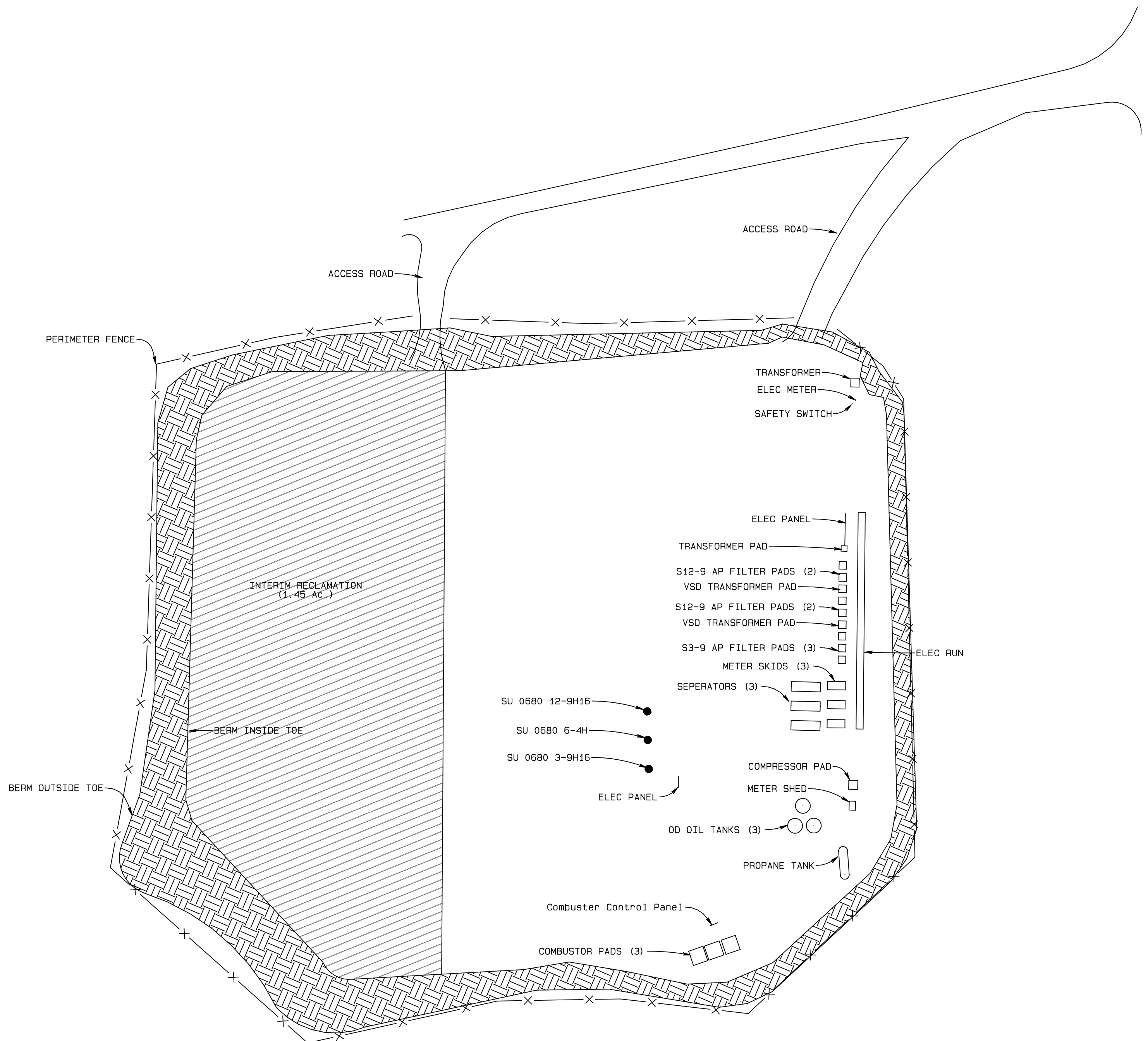


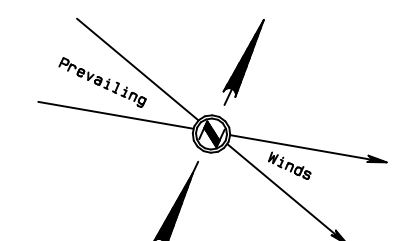
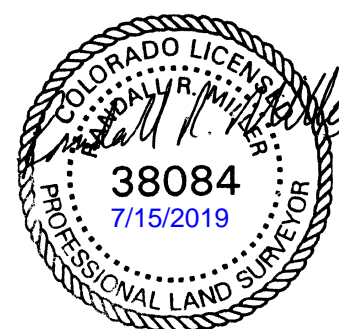
SandRidge Exploration & Production, LLC

As Built Pad Layout
SURPRISE UNIT 0680 S9 PAD
NE1/4NW1/4 of
SECTION 9, T6N, R80W, 6th PM
JACKSON COUNTY, COLORADO

DATE: 7/15/2019



Total Disturbed Area = 5.04 Ac.
Effective Pad Area = 4.23 Ac.
Interim Reclamation = 1.45 Ac.



GRAPHIC SCALE 1"=50'
50 0 50