

Foundation Energy Management, LLC

WELLBORE DIAGRAM

Well / Battery	Prospect Name		Total Depth	Current Status
ROCKWELL	Bonny		2568	PR
Location	Sec-Twn-Rng		Producing Horizon	County & State
44-7	7-1N-45W		NIOBRARA	Yuma, CO

CURRENT WBD

Prepared Date:

Prepared By: Mike Jumper

General Info

API #: 05-125-08402

KB Elevation:

GL Elevation:

Spud Date:

Completion Date:

TVD:

MD:

Last PBTD:

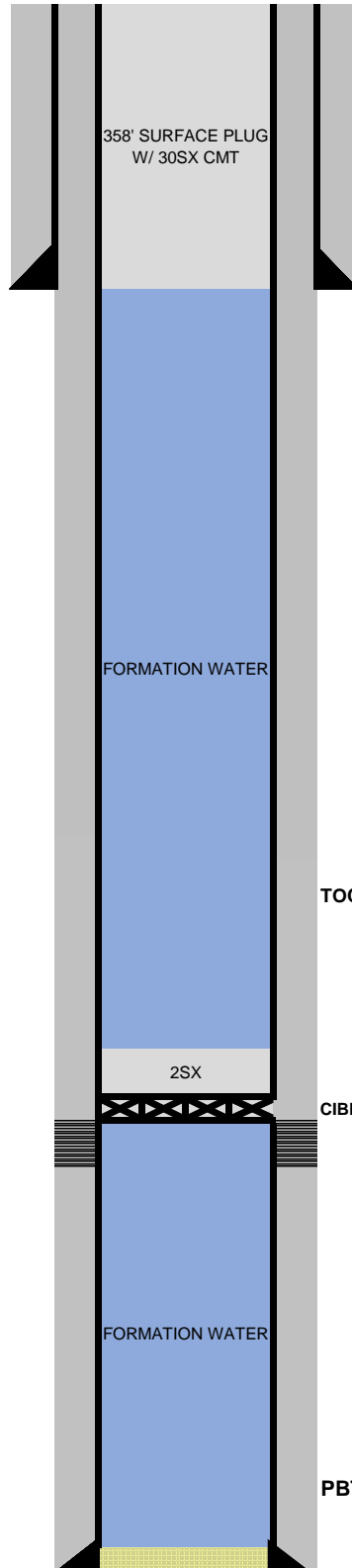
Tubing Detail

inch(OD)

(weight)

grade

EOT



Surface Casing

7" inch (OD)
17 # (weight)
grade
358 depth from KB
SURF cement top
150 sacks of cement
9-5/8" inch (OD) HOLE SIZE

Production Casing

4-1/2" inch (OD)
10.5 # (weight)
grade
2568 depth from KB
SURF cement top
215 sacks of cement
6-1/4" inch (OD) HOLE SIZE

TOC:

CIBP @ 2,370'

Open Perforations

2,416-2,380'

PBTD:

Pump Details:
none

Pumping Unit Details:

Well Notes: