

2019-06-27 03:00	1	718.00	Water Based Mud	9.3	20	N/A	N/A	80/20	Active Pit	27500	0.00
2019-06-23 03:00	2	1587.00	Oil Based Mud	9.3	10	N/A	N/A	82/18	Active Pit	18000	0.00
2019-06-25 03:00	3	9222.00	Oil Based Mud	9.7	13	N/A	N/A	81/19	Active Pit	20000	0.00
2019-06-26 03:00	3	11238.00	Oil Based Mud	9.7	13	N/A	N/A	80/20	Active Pit	36000	0.00
2019-06-28 03:00	3	16347.00	Oil Based Mud	9.9	14	N/A	N/A	80/20	Active Pit	36500	0.00

Equipment and Service Data

Run No.	Tool	Serial Number	Measurement	Sensor Offset (ft)	Bit Offset (ft)	Max O.D. (in)	Min I.D. (in)
1	NaviTrak	13249128	VSS	16.47	52.54	8.000	3.250
1	NaviTrak	13249128	Directional (mag)	16.47	52.54	8.000	3.250
2	AutoTrak Curve Steering Unit	14316020	Near Bit Inclination	5.93	6.73	7.000	4.330
2	AutoTrak Curve Steering Unit	14316020	Near Bit VSS	5.93	6.73	7.000	4.330
2	AutoTrak Curve MWD	14284442	Gamma (single)	2.73	12.90	7.000	3.250
2	AutoTrak Curve MWD	14284442	Directional (mag)	12.26	22.43	7.000	3.250
3	AutoTrak Curve Steering Unit	14381514	Near Bit VSS	5.93	6.73	7.000	4.330
3	AutoTrak Curve Steering Unit	14381514	Near Bit Inclination	5.93	6.73	7.000	4.330
3	AutoTrak Curve MWD	14256850	Gamma (single)	2.20	12.31	7.000	3.250
3	AutoTrak Curve MWD	14256850	Directional (mag)	12.27	22.38	7.000	3.250

Service and Tool Mnemonics

Mnemonic	Name	Description
NTK	NaviTrak	Probe Based Directional Module, NaviTrak Platform
ATC SU	AutoTrak Curve SU	Auto Trak Curve Steering Unit
ATC MWD	AutoTrak Curve MWD	Auto Trak Curve MWD
ATC LCPM	AutoTrak Curve LCPM	Auto Trak Curve LCPM

Comments

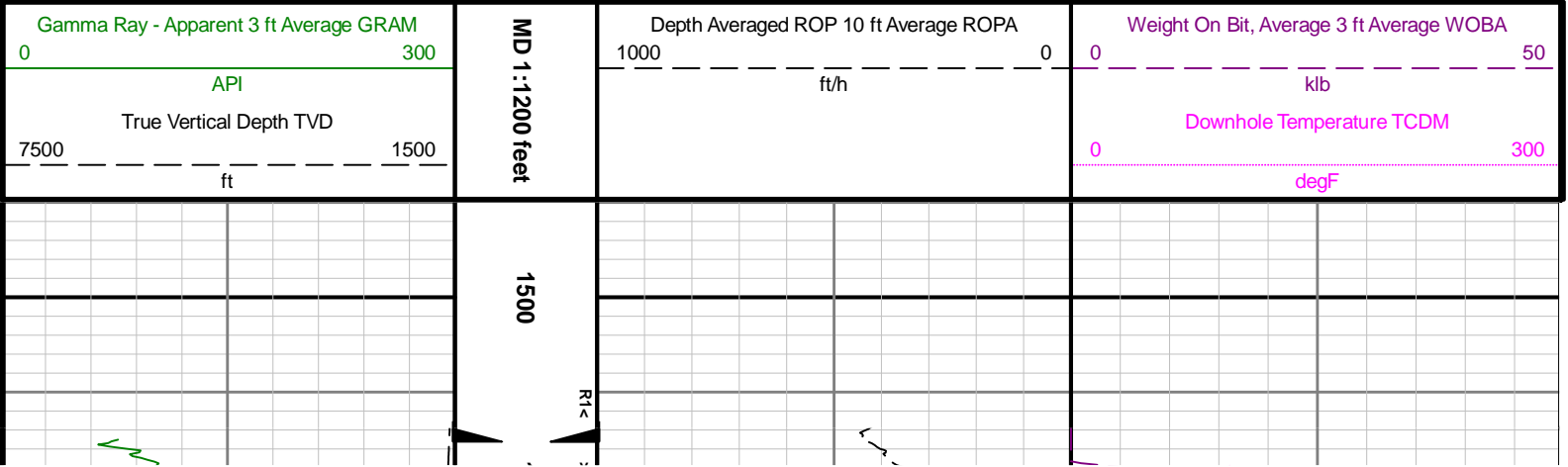
1	Depth measurements were obtained from a depth control system not supplied or operated by Baker Hughes, a GE company. Due to a lack of control by Baker Hughes, a GE company logging engineers, depth calibrations and measurements could not be independently verified and the unverified depths as supplied to Baker Hughes, a GE company are being used to present logging data.
2	Baker Hughes, a GE company run 1 utilized 8 inch Directional-only with NaviTrak service behind a 13 ½ inch bit an 8 inch steerable assembly from 23 to 1587 feet MD (23 to 1587 feet TVD) therefore, no logging data was acquired for this run.
3	Baker Hughes, a GE company run 2 and 3 utilized 6 ¾ inch NaviGamma services (Gamma Ray and Directional) behind 8 ½ inch bit and rotary steerable assembly from 1587 to 16347 feet MD (1587 to 6288 feet TVD).
4	Gamma Ray Apparent (GRAM) is presented 0 to 300 API per customer request.

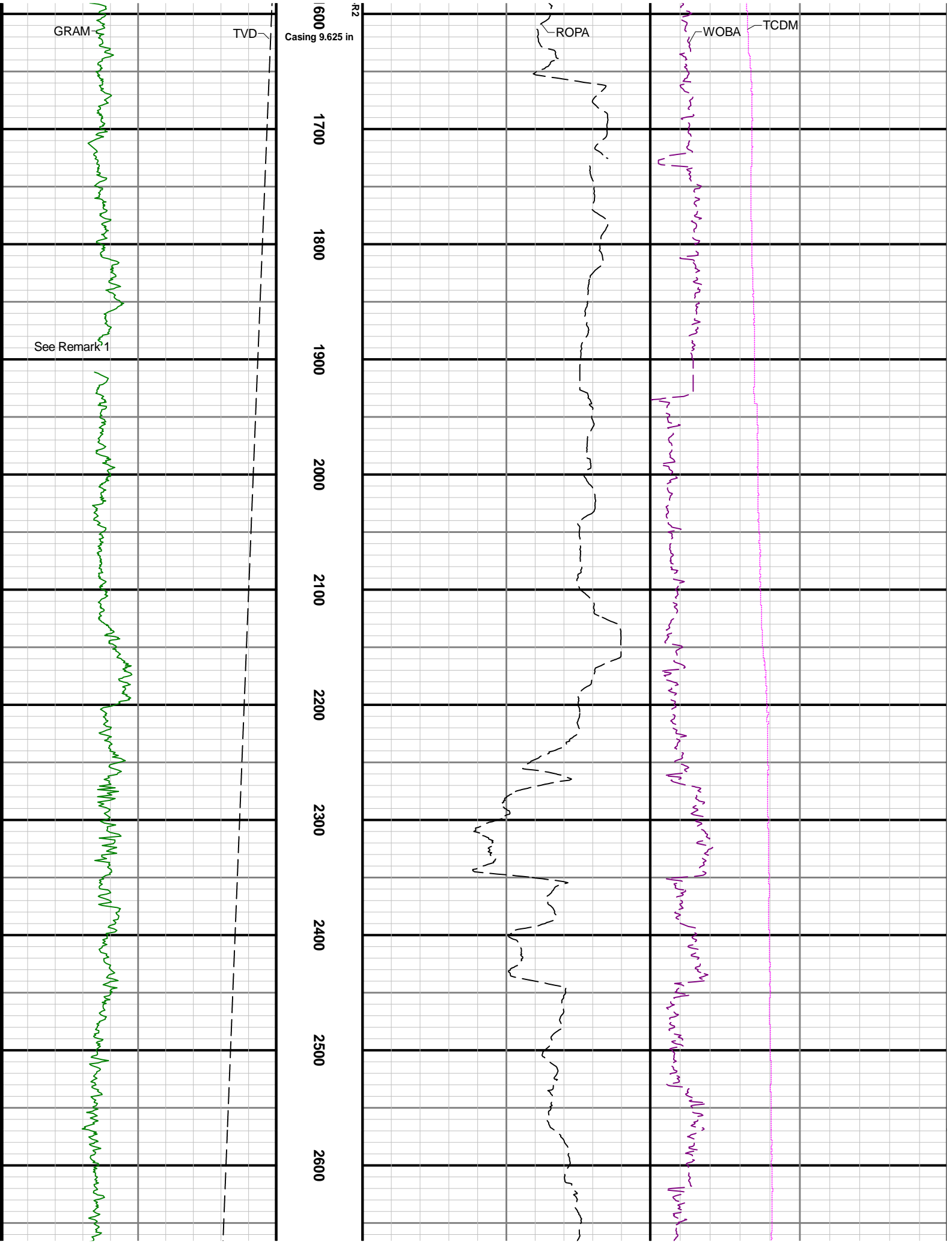
Remarks

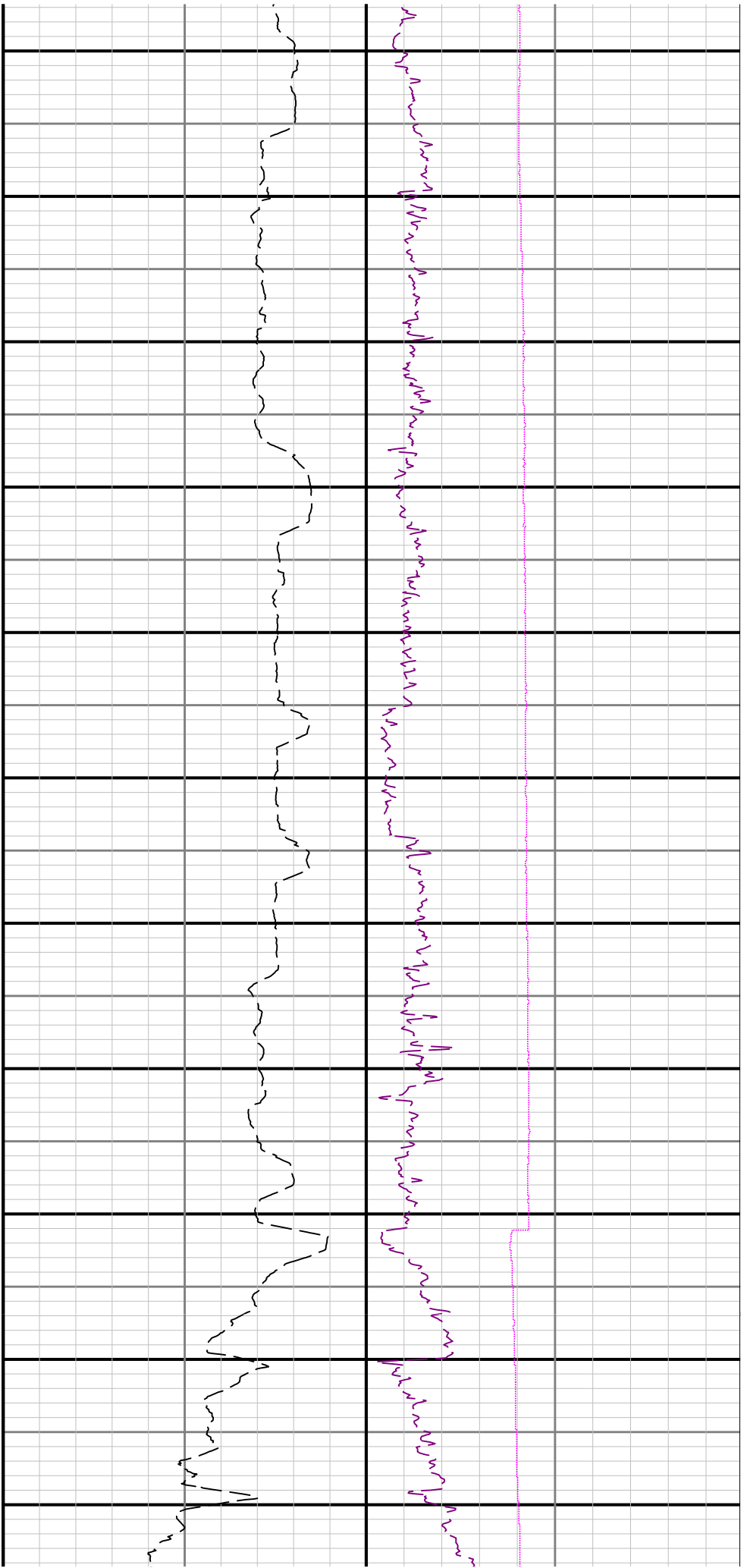
Number	Depth (ft)	Hole Section (in)	Run No.	Remark
1	1888.00	8.500	2	The interval from 1888 to 1911 feet MD (1888 to 1910 feet TVD) data was not logged due to Pason depth issue.
2	12462.00	8.500	3	The interval from 12462 to 21480 feet MD (6300 feet TVD) data was not logged due to drilling ahead while ATC shut down.
3	16334.00	8.500	3	The interval from 16334 to 16347 feet MD (6288 feet TVD) was not logged due to sensor to bit offset at well TD.

Curve Mnemonics

Presented Curves	Description	Units
ROPA	Depth Averaged ROP 10 ft Average	ft/h
TVD	True Vertical Depth	ft
WOBA	Weight On Bit, Average 3 ft Average	klb
GRAM	Gamma Ray - Apparent - Memory 3 ft Average	API
TCDM	Directional Real-Time Survey Temperature	degF







R2<R3

