

2019-07-01 20:10	3	7088.00	Oil Based Mud	9.3	13	N/A	N/A	80/20	Active Pit	36500	0.00
2019-07-02 10:17	4	7180.00	Oil Based Mud	9.7	13	N/A	0.0	71/17	Active Pit	34000	0.00
2019-07-03 03:00	4	9230.00	Oil Based Mud	9.6	14	N/A	0.0	70/18	Active Pit	32000	0.00
2019-07-03 15:00	4	11165.00	Oil Based Mud	9.8	16	N/A	0.0	69/17.5	Active Pit	33000	0.00
2019-07-04 03:00	4	13000.00	Oil Based Mud	9.8	15	N/A	0.0	70/17	Active Pit	33000	0.00

Equipment and Service Data

Run No.	Tool	Serial Number	Measurement	Sensor Offset (ft)	Bit Offset (ft)	Max O.D. (in)	Min I.D. (in)
1	NaviTrak	13249128	VSS	16.47	52.54	8.000	3.250
1	NaviTrak	13249128	Directional (mag)	16.47	52.54	8.000	3.250
2	AutoTrak Curve Steering Unit	14514942	Near Bit VSS	5.93	6.73	7.000	4.330
2	AutoTrak Curve Steering Unit	14514942	Near Bit Inclination	5.93	6.73	7.000	4.330
2	AutoTrak Curve MWD	14452413	Gamma (single)	2.74	12.89	7.000	3.250
2	AutoTrak Curve MWD	14452413	Directional (mag)	12.26	22.41	7.000	3.250
3	AutoTrak Curve Steering Unit	14452345	Near Bit Inclination	5.93	6.73	7.000	4.330
3	AutoTrak Curve Steering Unit	14452345	Near Bit VSS	5.93	6.73	7.000	4.330
3	AutoTrak Curve MWD	14381973	Gamma (single)	2.20	12.36	7.000	3.250
3	AutoTrak Curve MWD	14381973	Directional (mag)	12.27	22.43	7.000	3.250
4	AutoTrak Curve Steering Unit	12480148	Near Bit Inclination	5.93	6.73	7.000	4.330
4	AutoTrak Curve Steering Unit	12480148	Near Bit VSS	5.93	6.73	7.000	4.330
4	AutoTrak Curve MWD	12441474	Gamma (single)	2.20	12.34	7.000	3.250
4	AutoTrak Curve MWD	12441474	Directional (mag)	12.27	22.41	7.000	3.250

Service and Tool Mnemonics

Mnemonic	Name	Description
NTK	NaviTrak	Probe Based Directional Module, NaviTrak Platform
ATC SU	AutoTrak Curve SU	Auto Trak Curve Steering Unit
ATC MWD	AutoTrak Curve MWD	Auto Trak Curve MWD
ATC LCPM	AutoTrak Curve LCPM	Auto Trak Curve LCPM

Comments

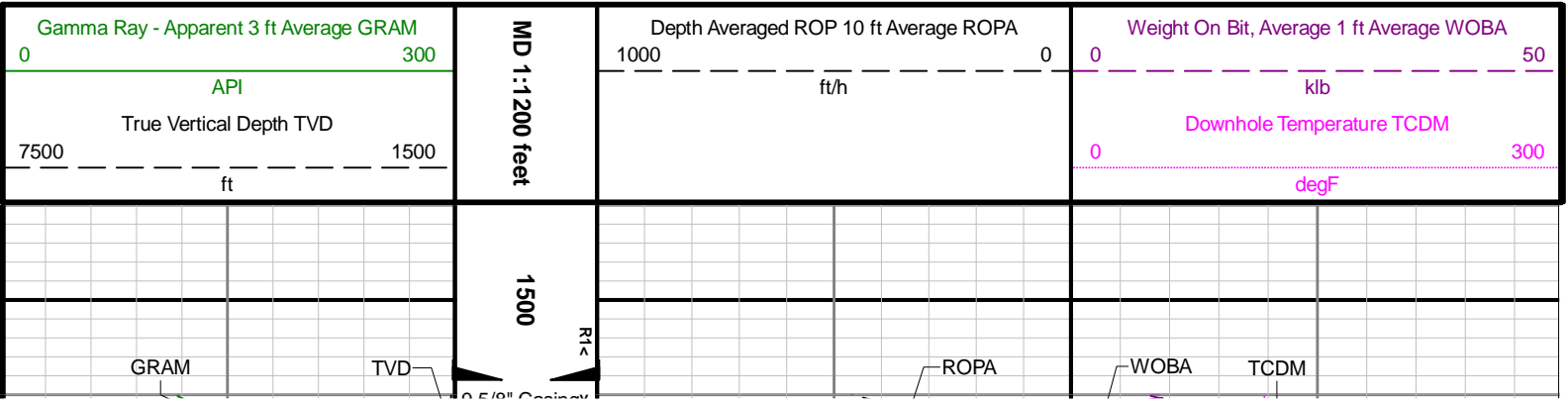
1	Depth measurements were obtained from a depth control system not supplied or operated by Baker Hughes, a GE company. Due to a lack of control by Baker Hughes, a GE company logging engineers, depth calibrations and measurements could not be independently verified and the unverified depths as supplied to Baker Hughes, a GE company are being used to present logging data.
2	Baker Hughes, a GE company run 1 utilized 8 inch Directionalonly with NaviTrak service behind a 13 ½ inch bit an 8 inch steerable assembly from 23 to 1550 feet MD (23 to 1550 feet TVD) therefore, no logging data was acquired for this run.
3	Baker Hughes, a GE company run 2 and 3 utilized 6 ¾ inch NaviGamma services (Gamma Ray and Directional) behind 8 ½ inch bit and rotary steerable assembly from 1550 to 16462 feet MD (1550 to 6418 feet TVD).
4	Gamma Ray Apparent (GRAM) is presented 0 to 300 API per customer request.

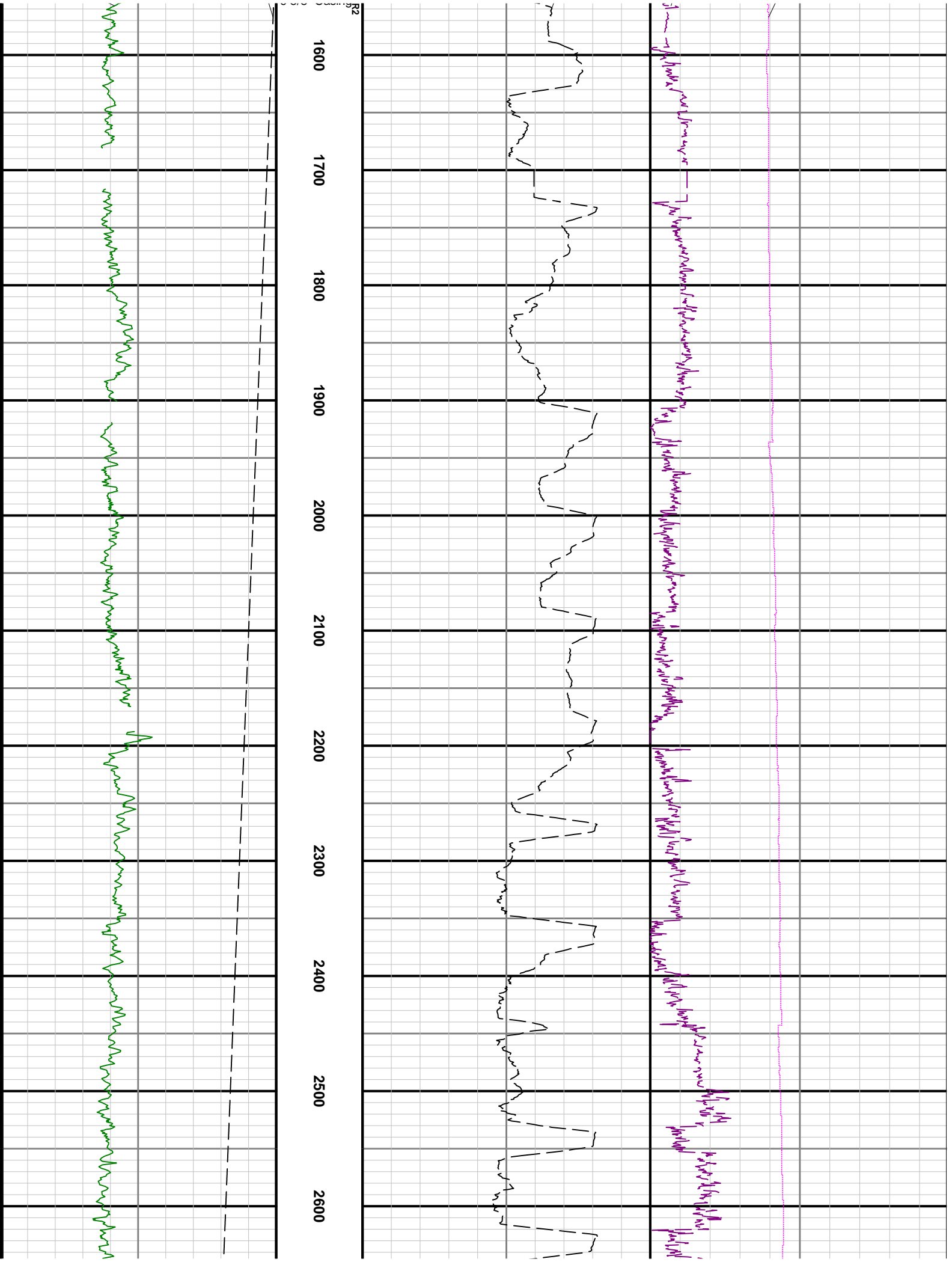
Remarks

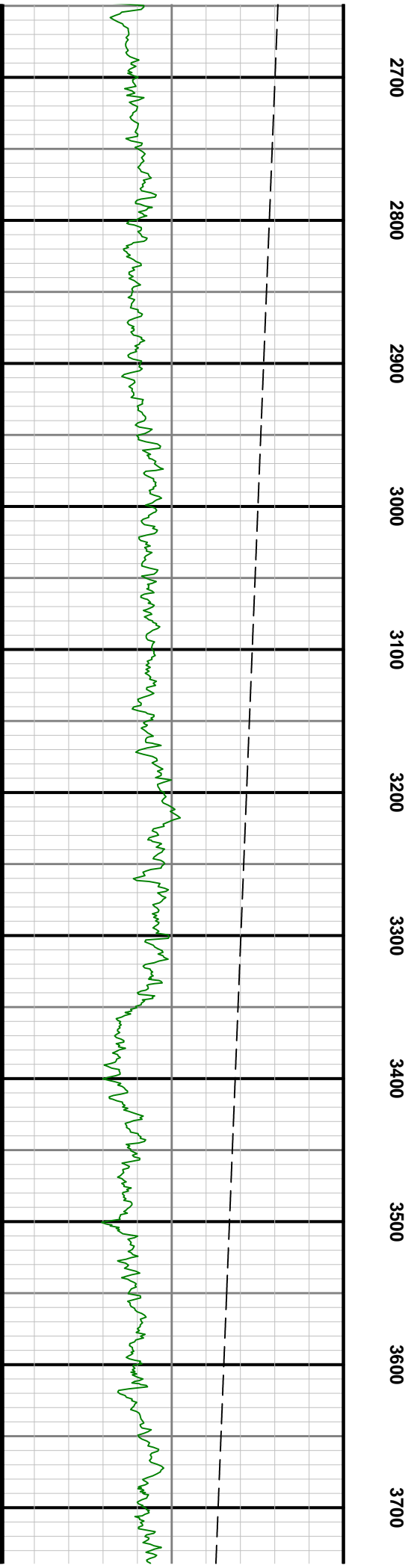
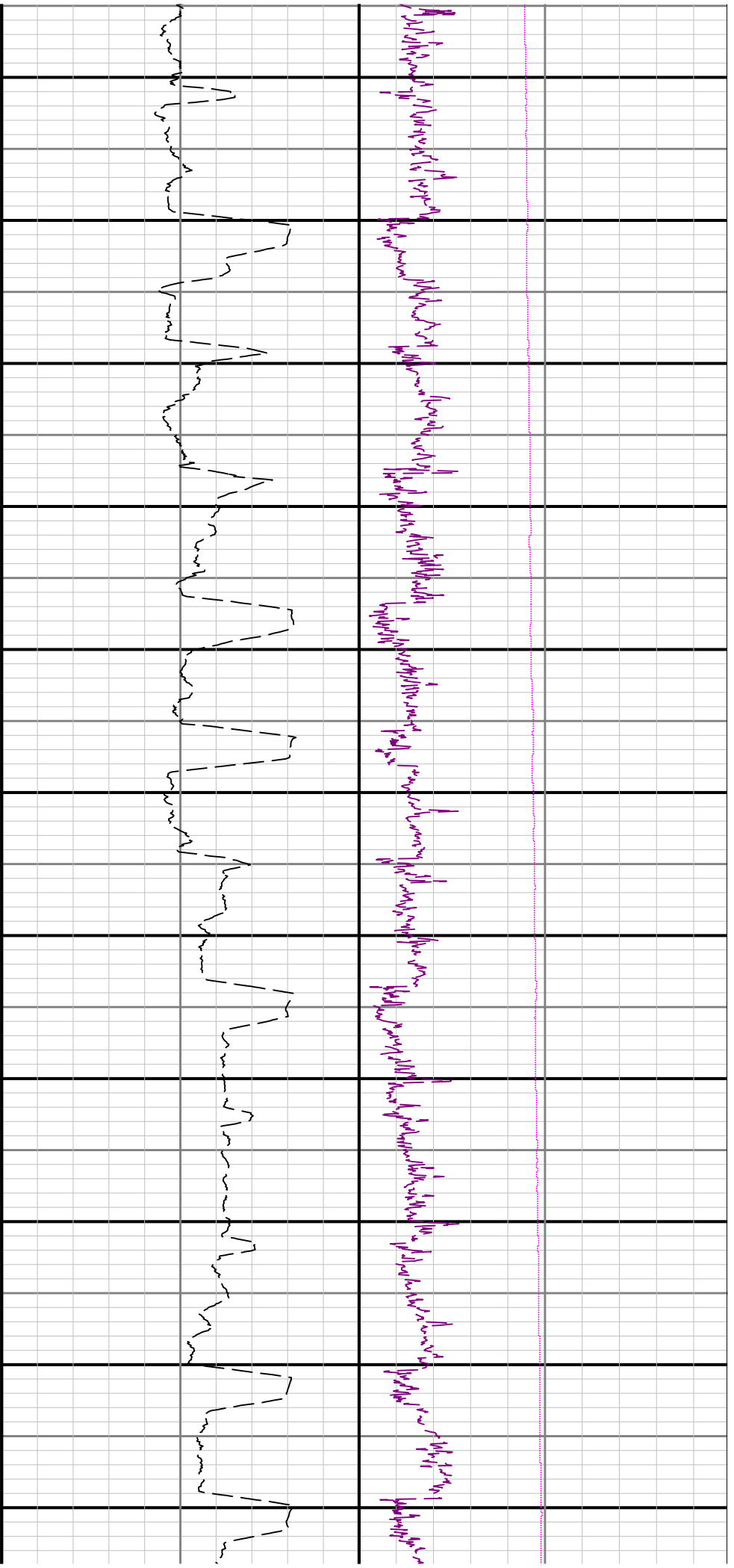
Number	Depth (ft)	Hole Section (in)	Run No.	Remark
1	16462.00	8.500	4	The interval from 16449 to 16462 feet MD (6418 feet TVD) was not logged due to sensor to bit offset at well TD.

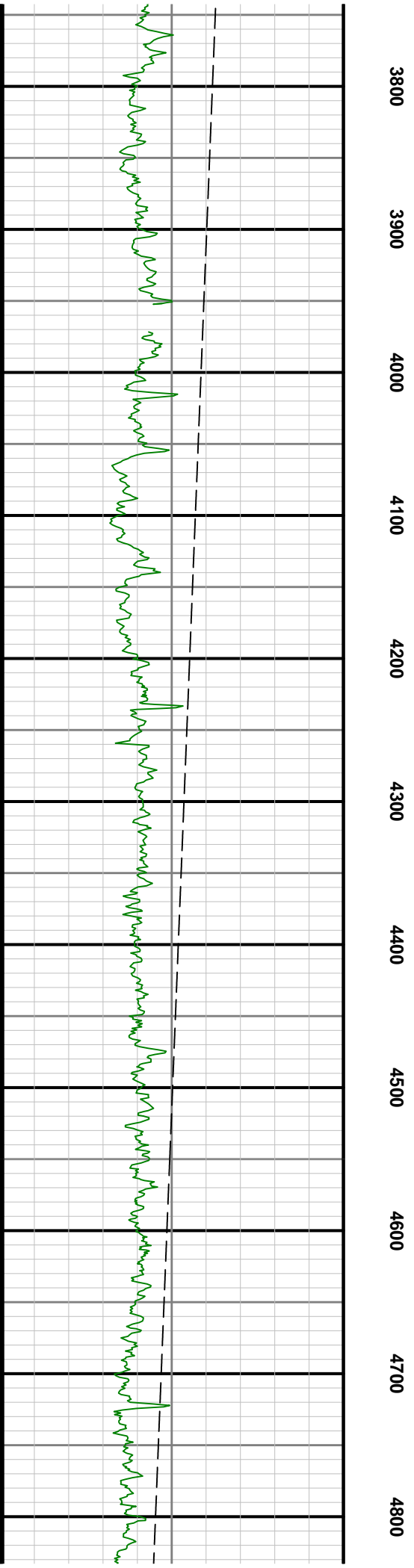
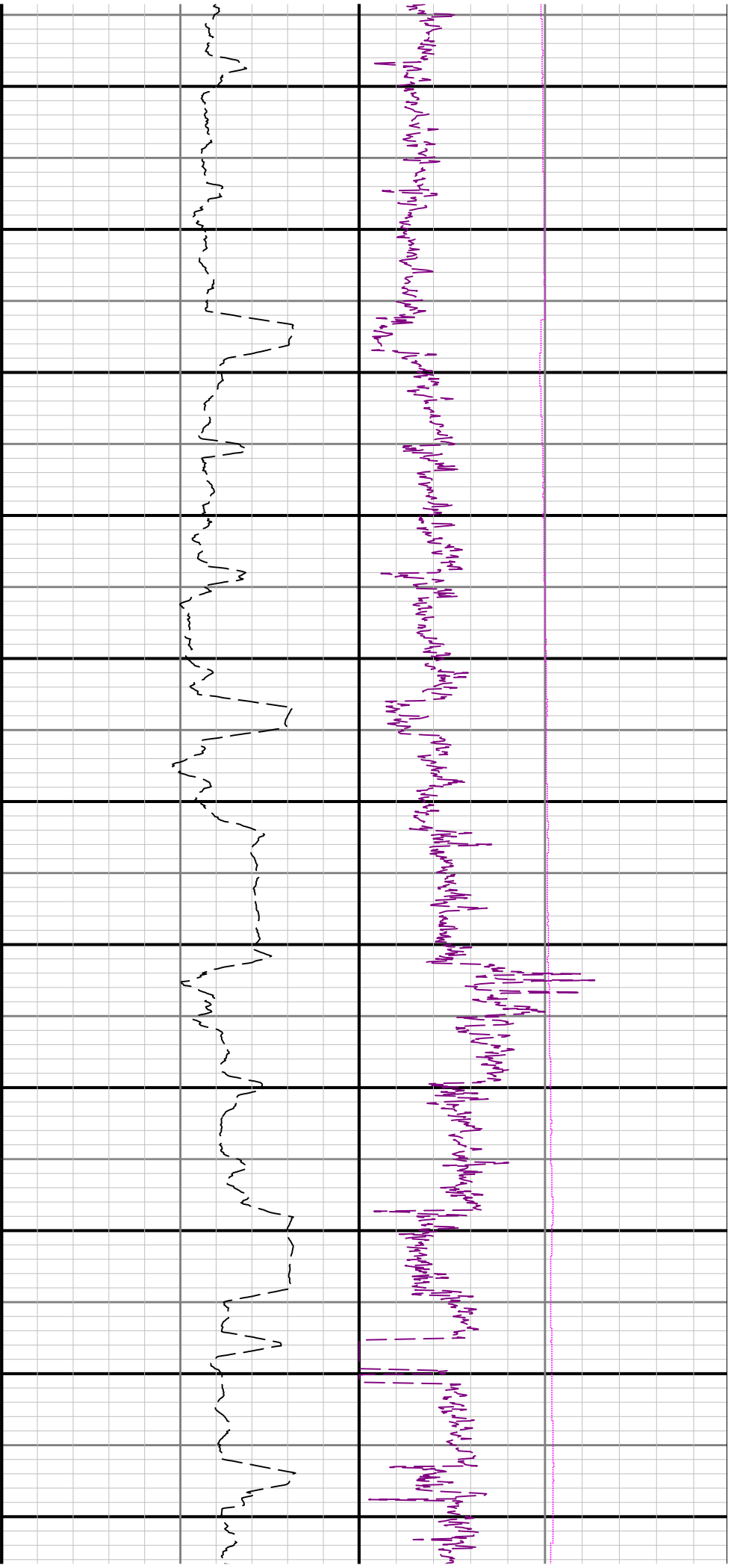
Curve Mnemonics

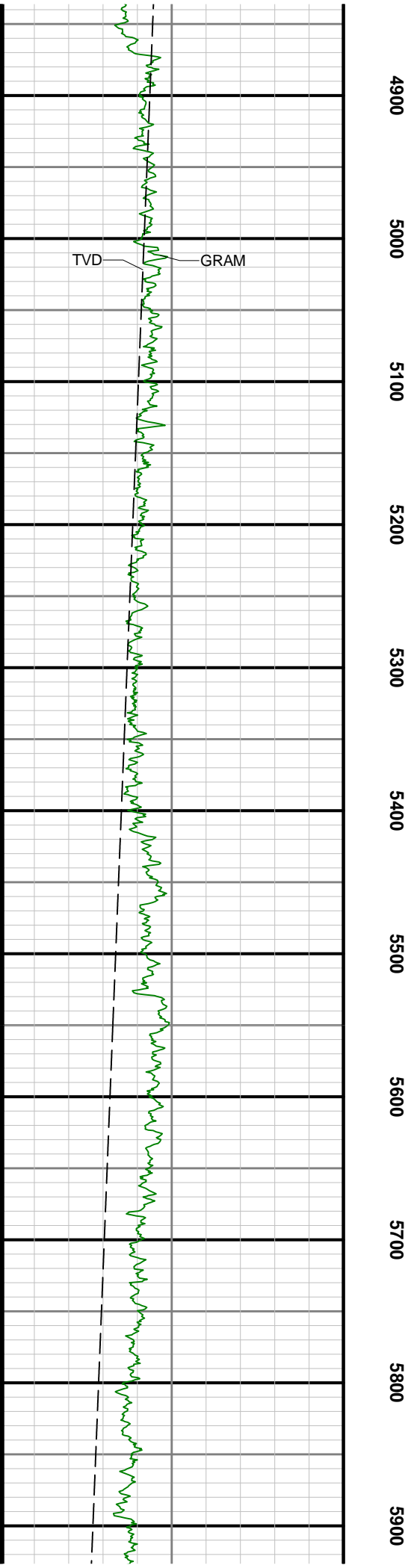
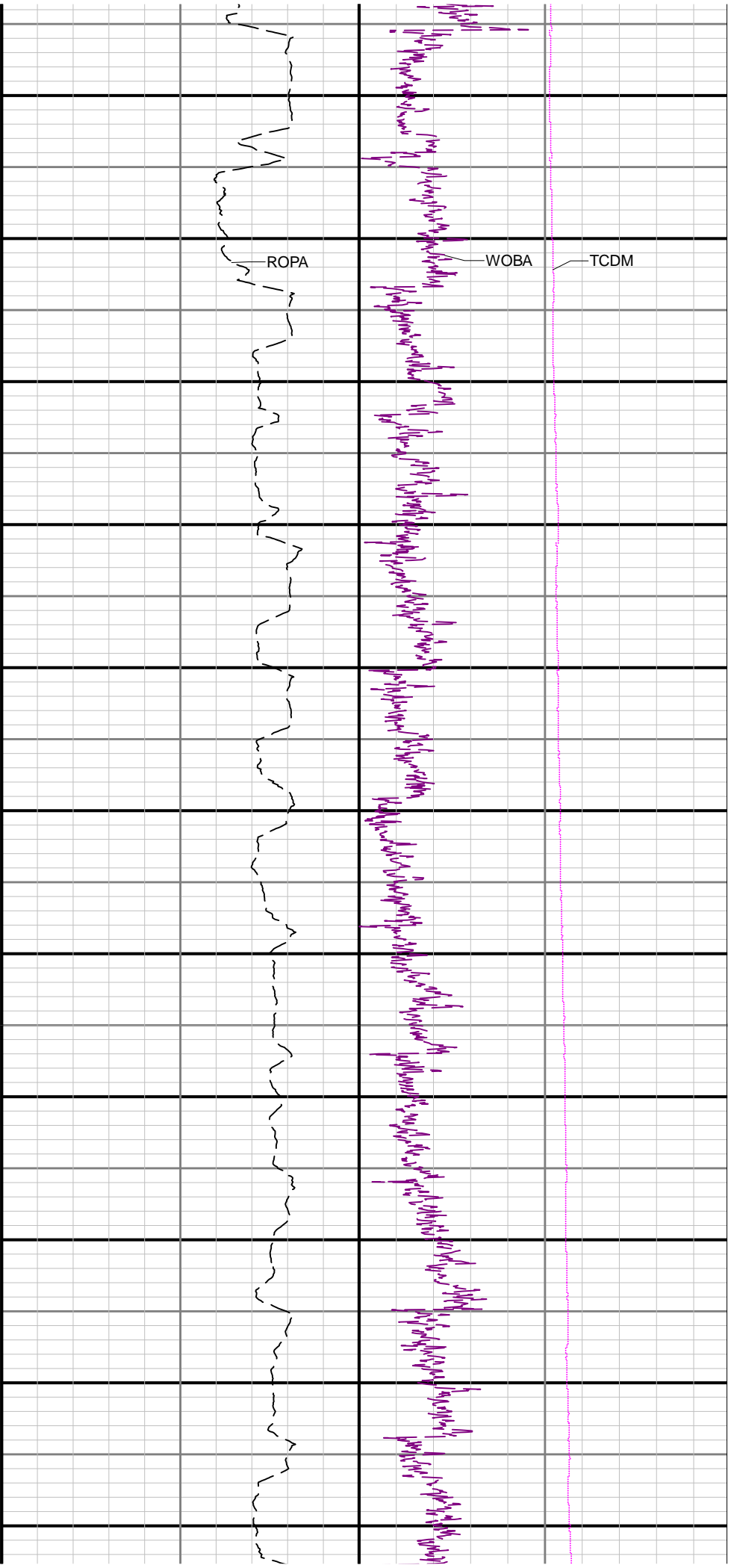
Presented Curves	Description	Units
ROPA	Depth Averaged ROP 10 ft Average	ft/h
TVD	True Vertical Depth	ft
WOBA	Weight On Bit, Average 1 ft Average	klb
GRAM	Gamma Ray - Apparent - Memory 3 ft Average	API
TCDM	Directional Real-Time Survey Temperature	degF

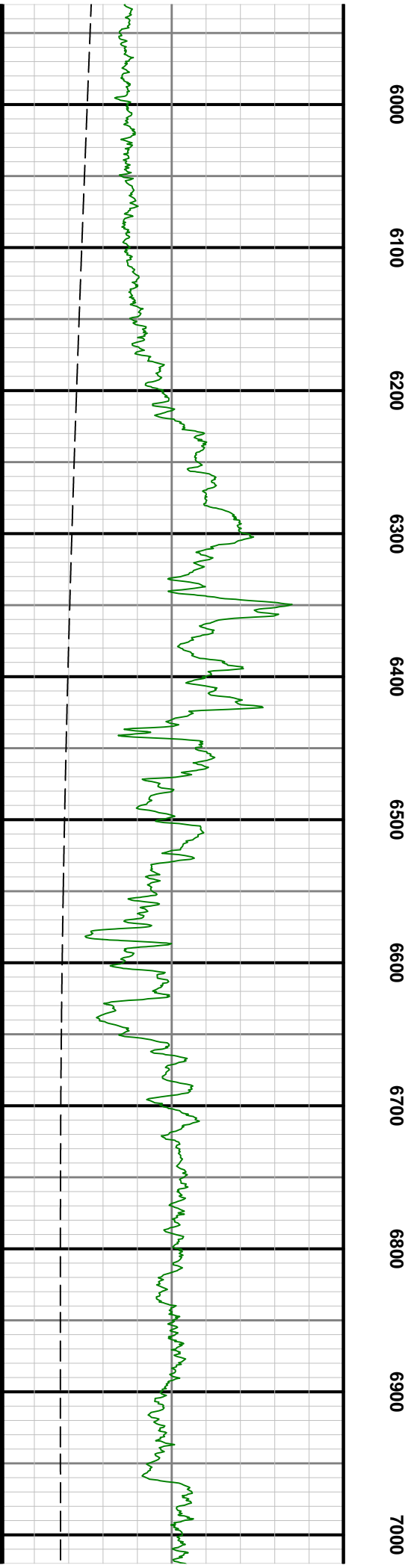
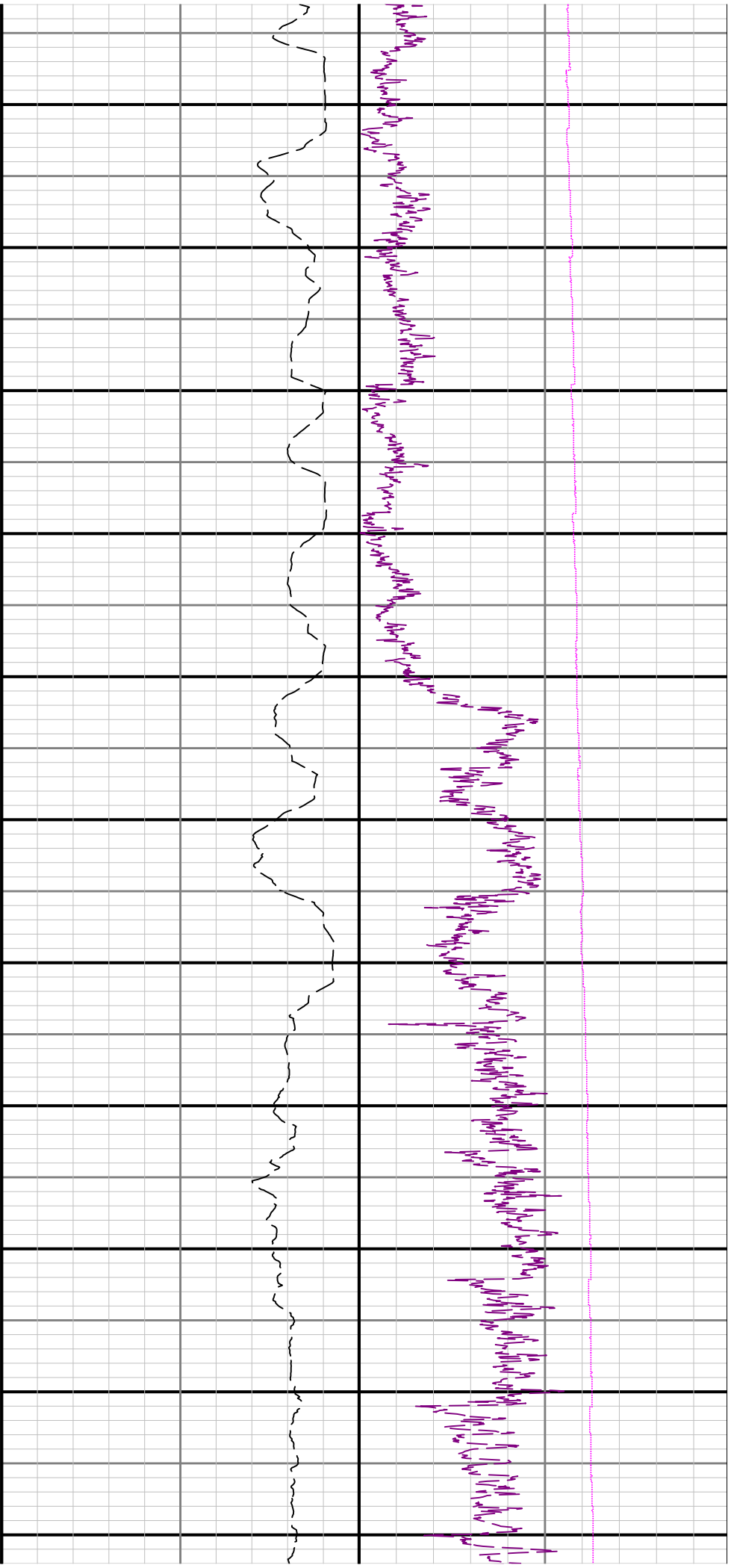


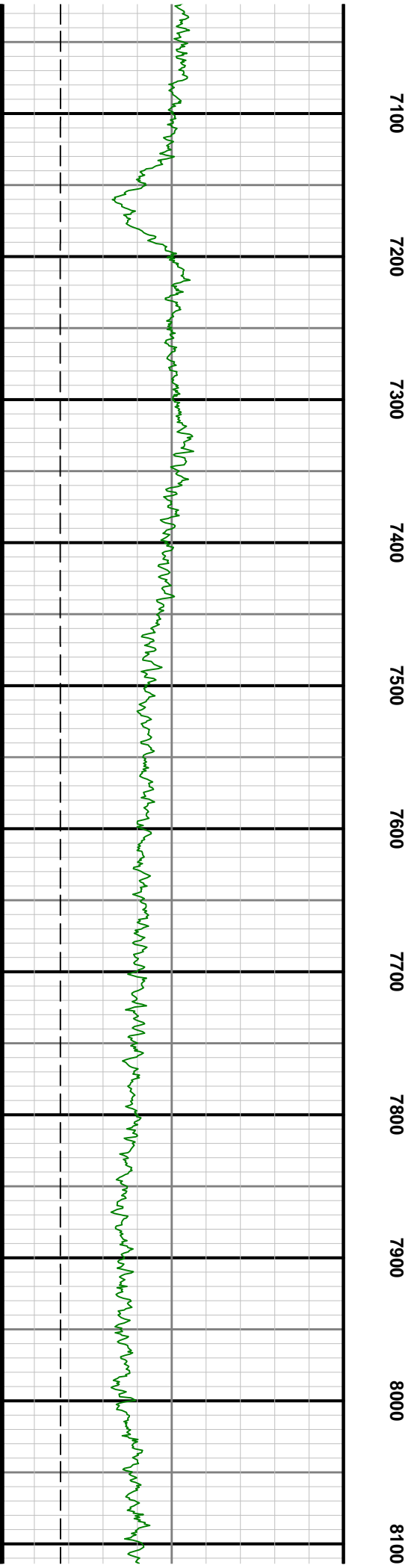
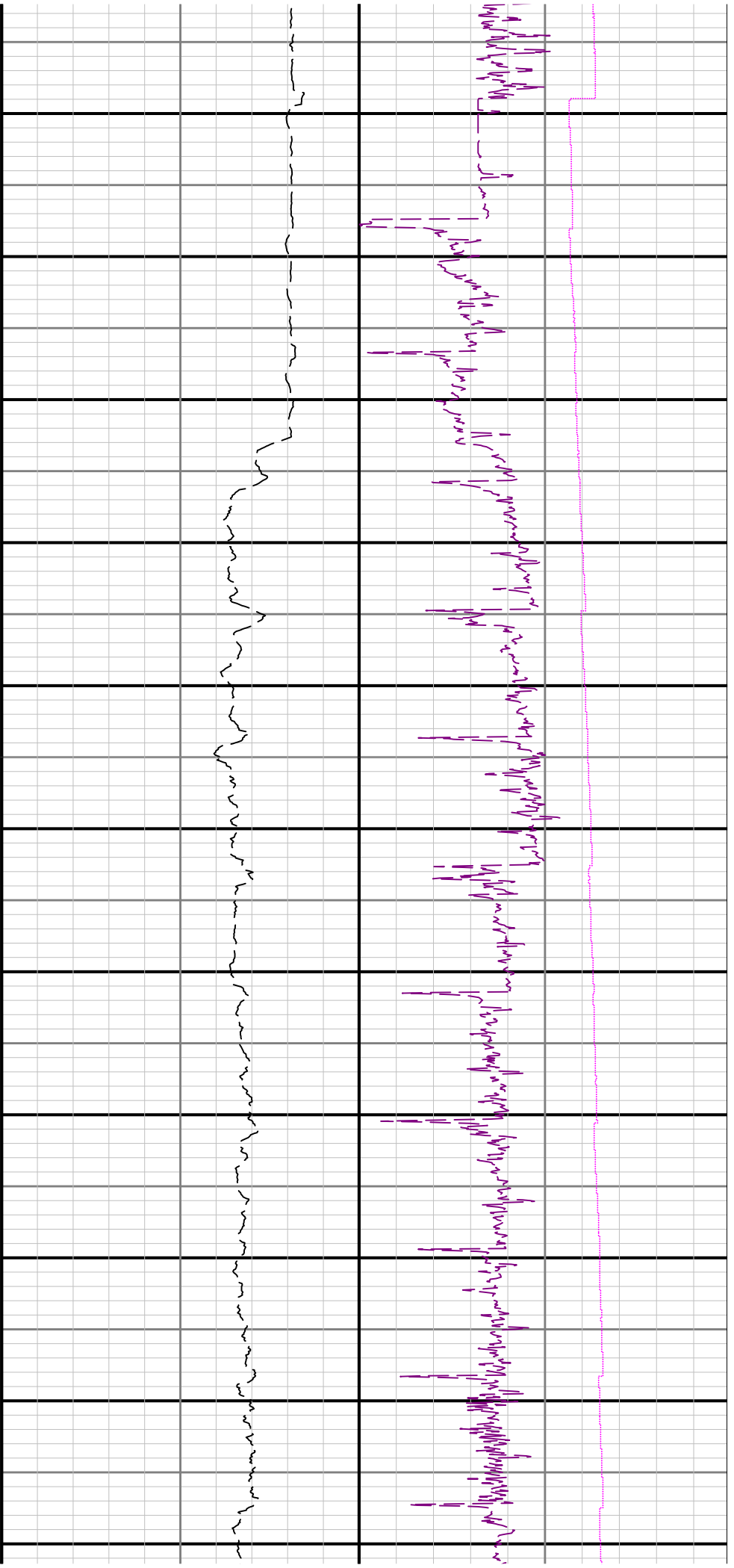


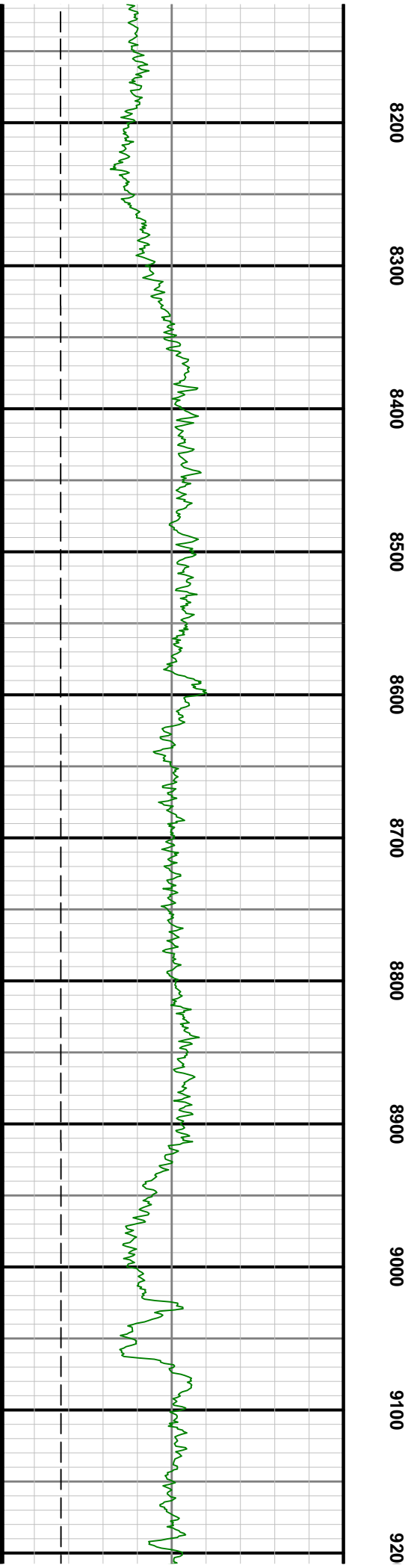
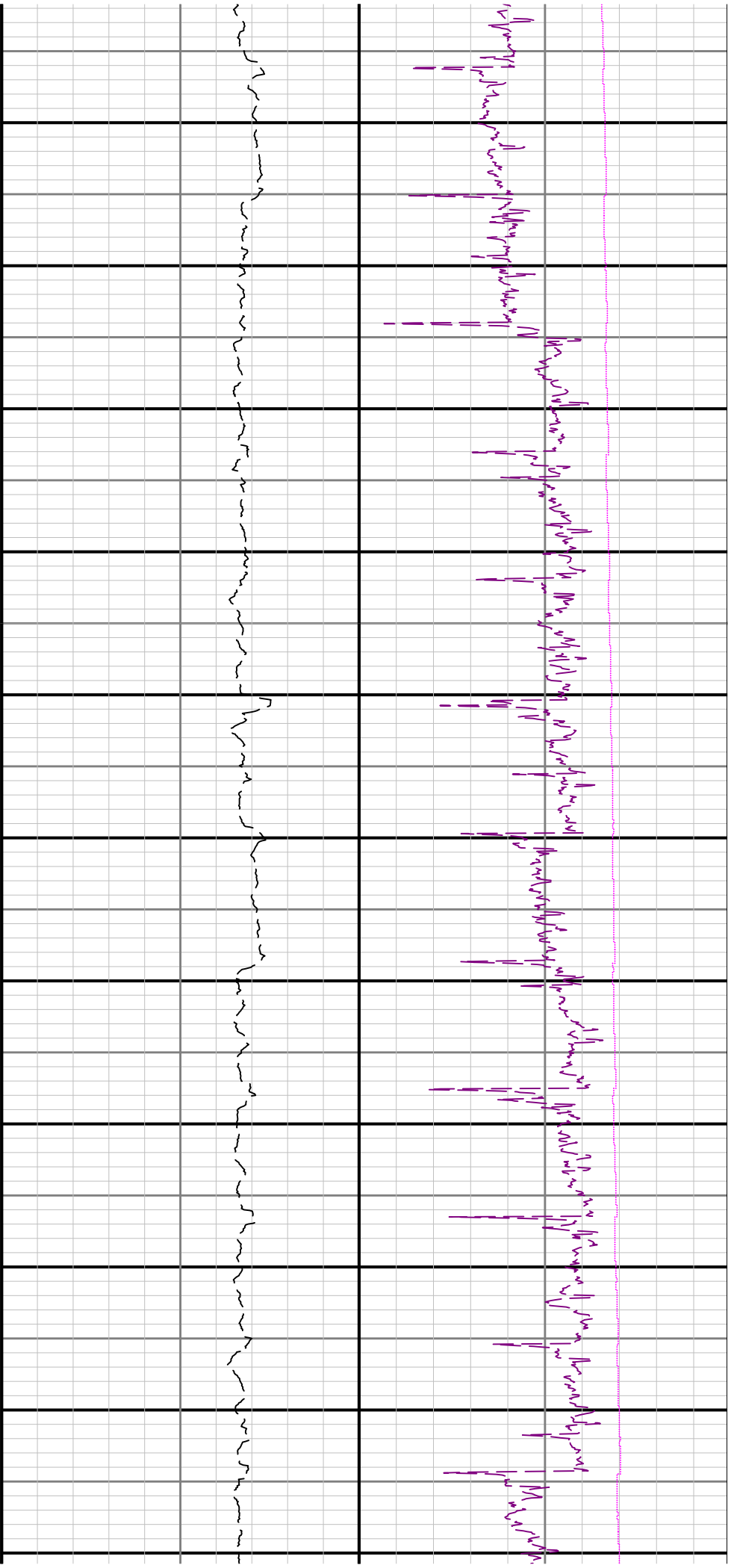


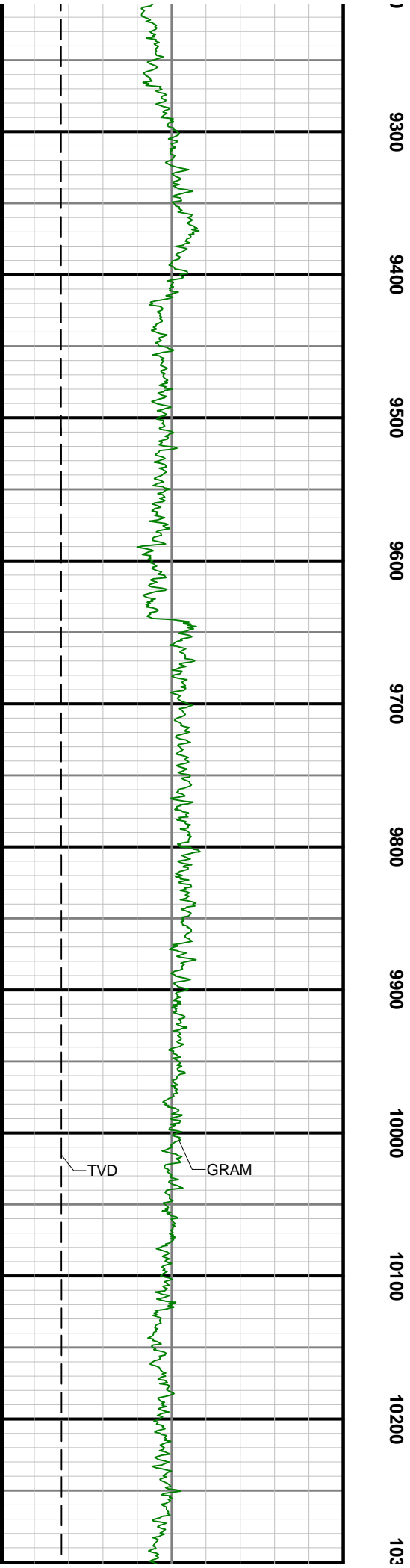
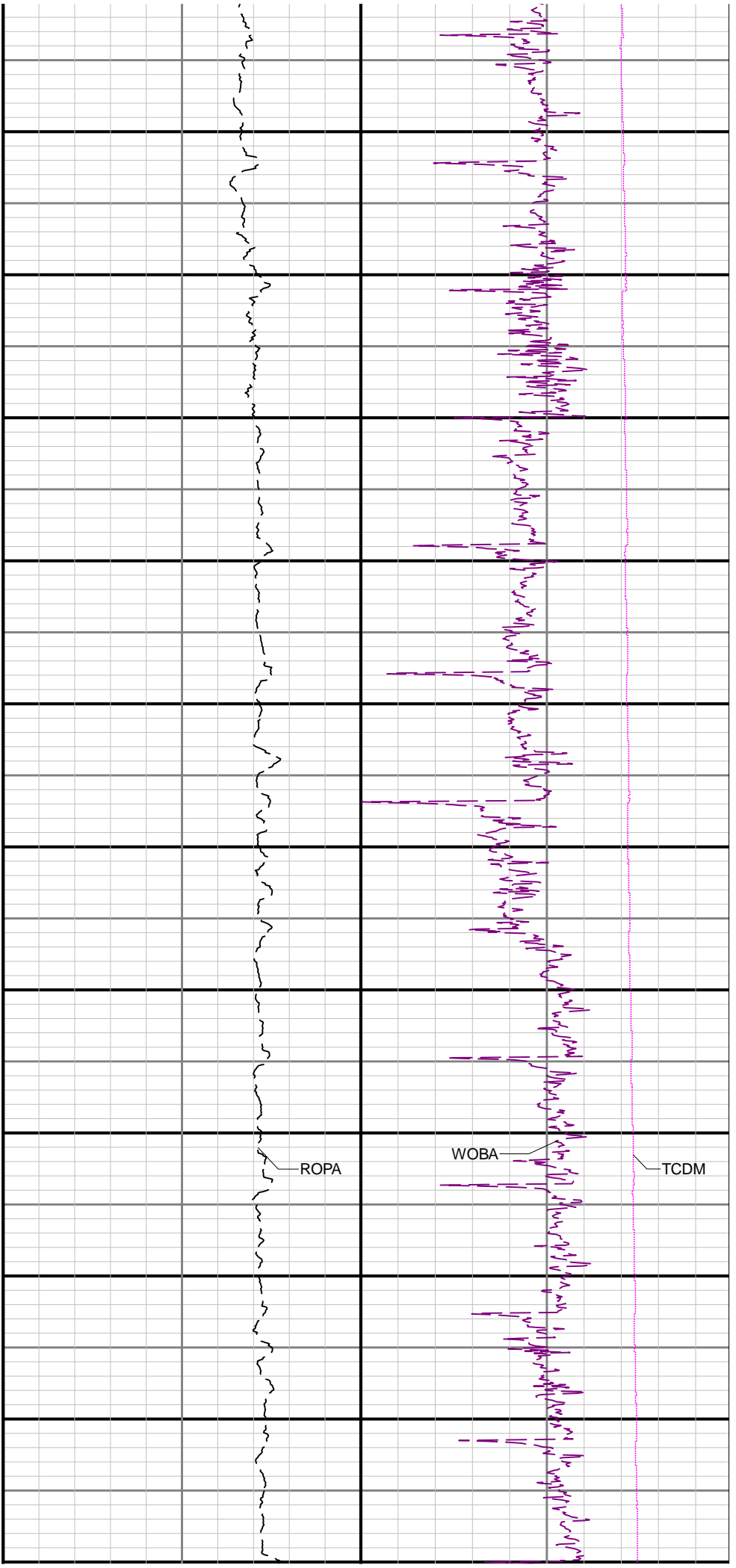


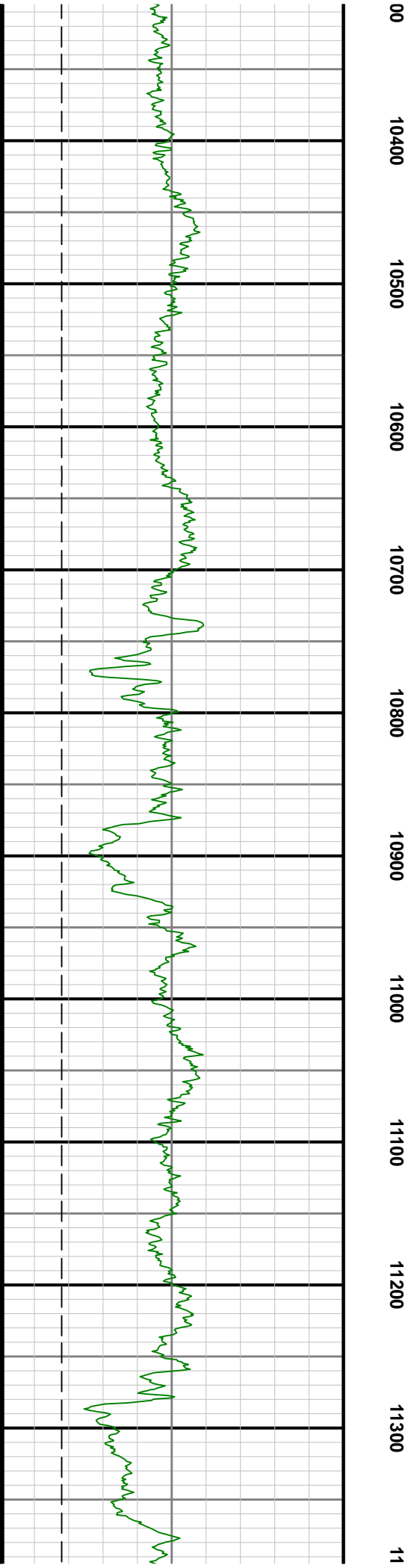
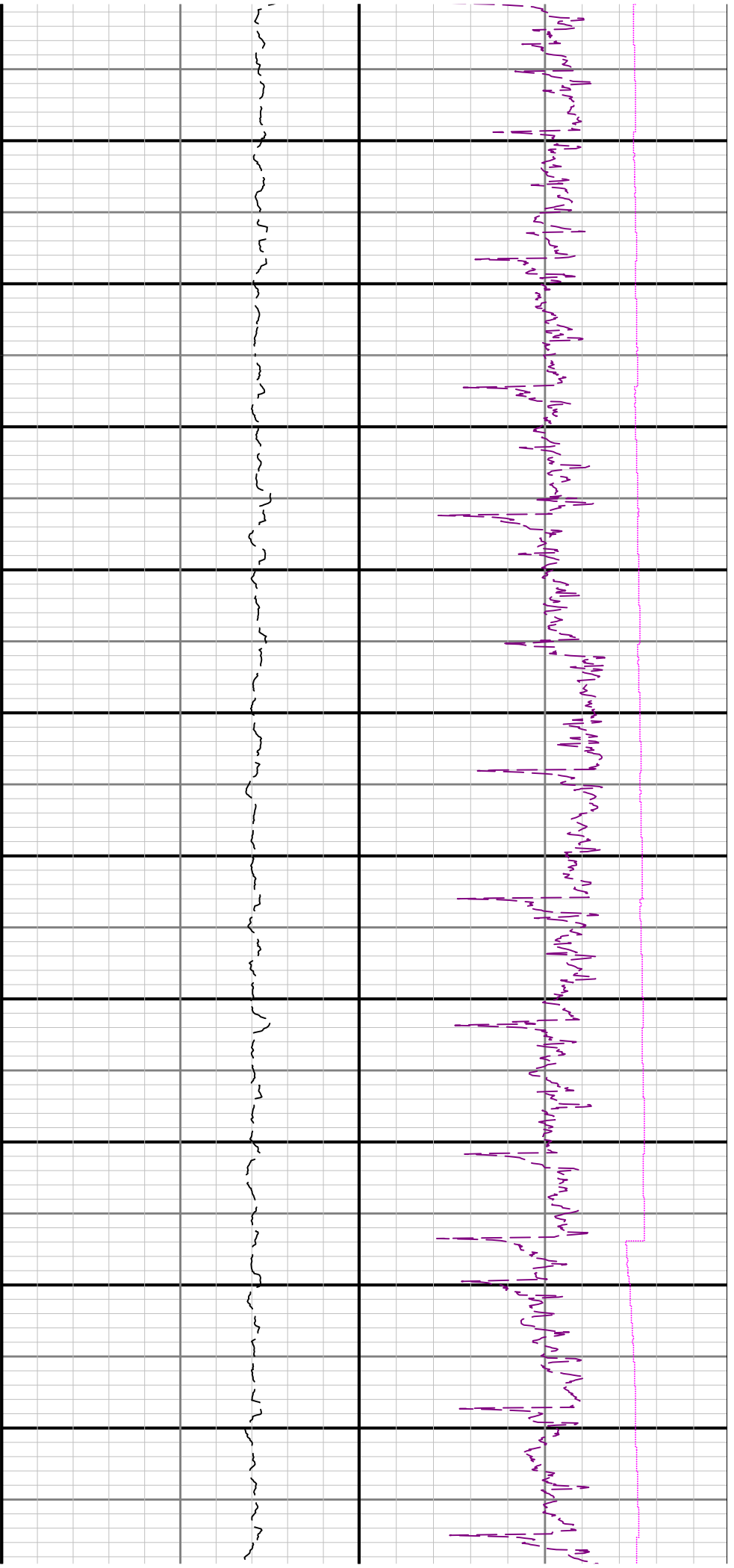


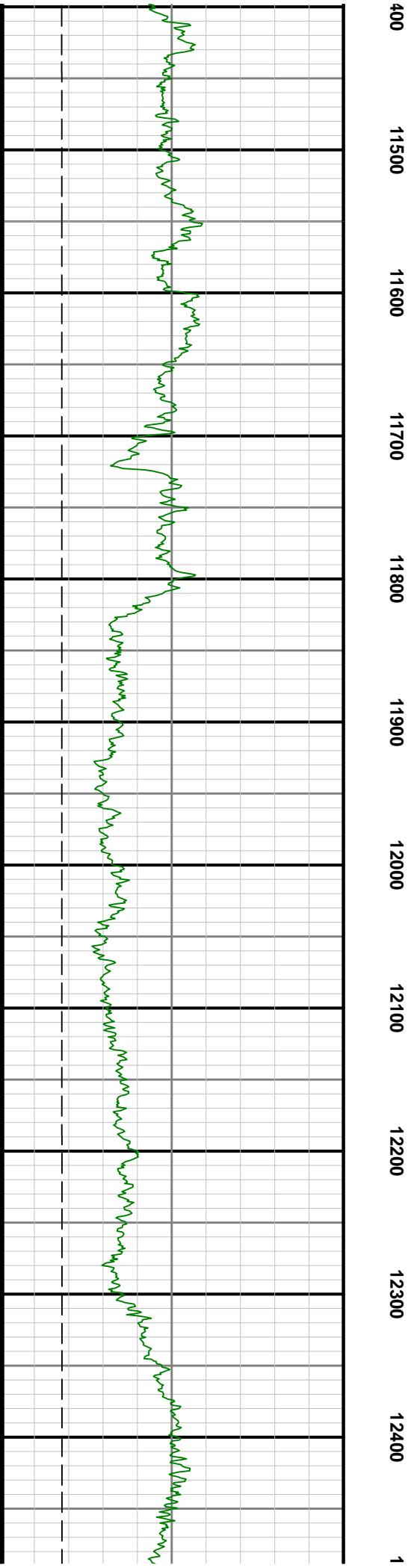
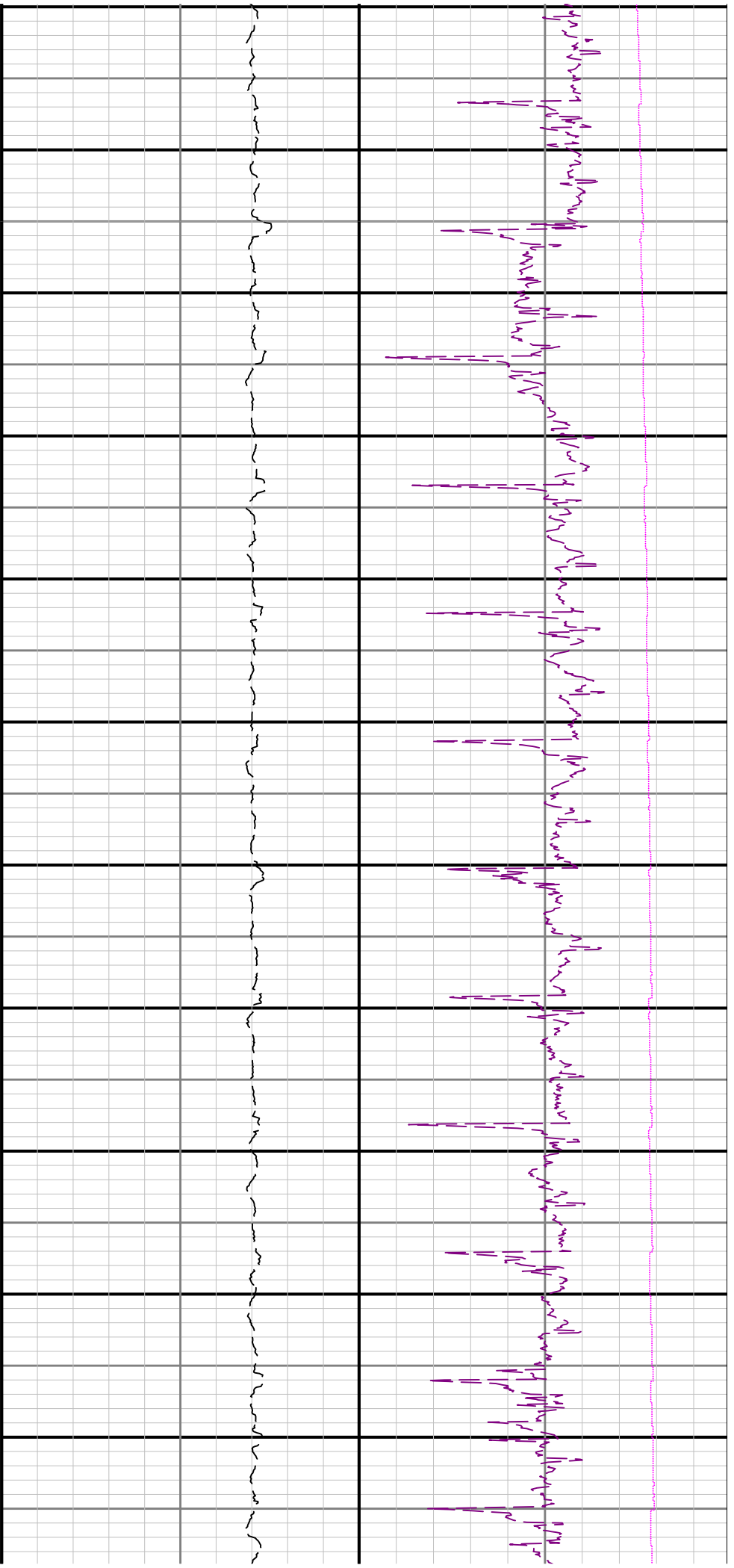


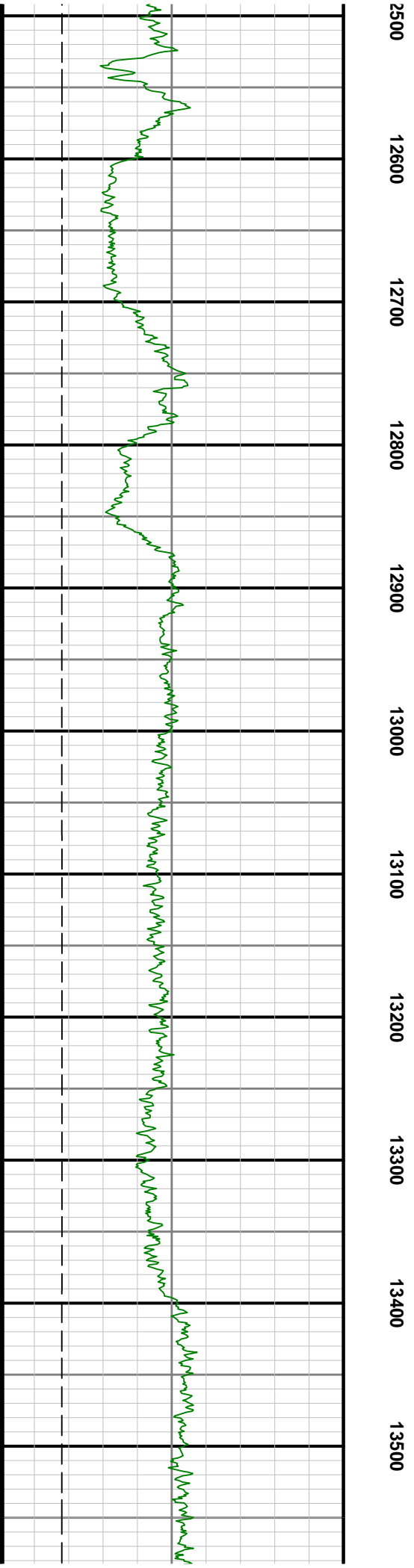
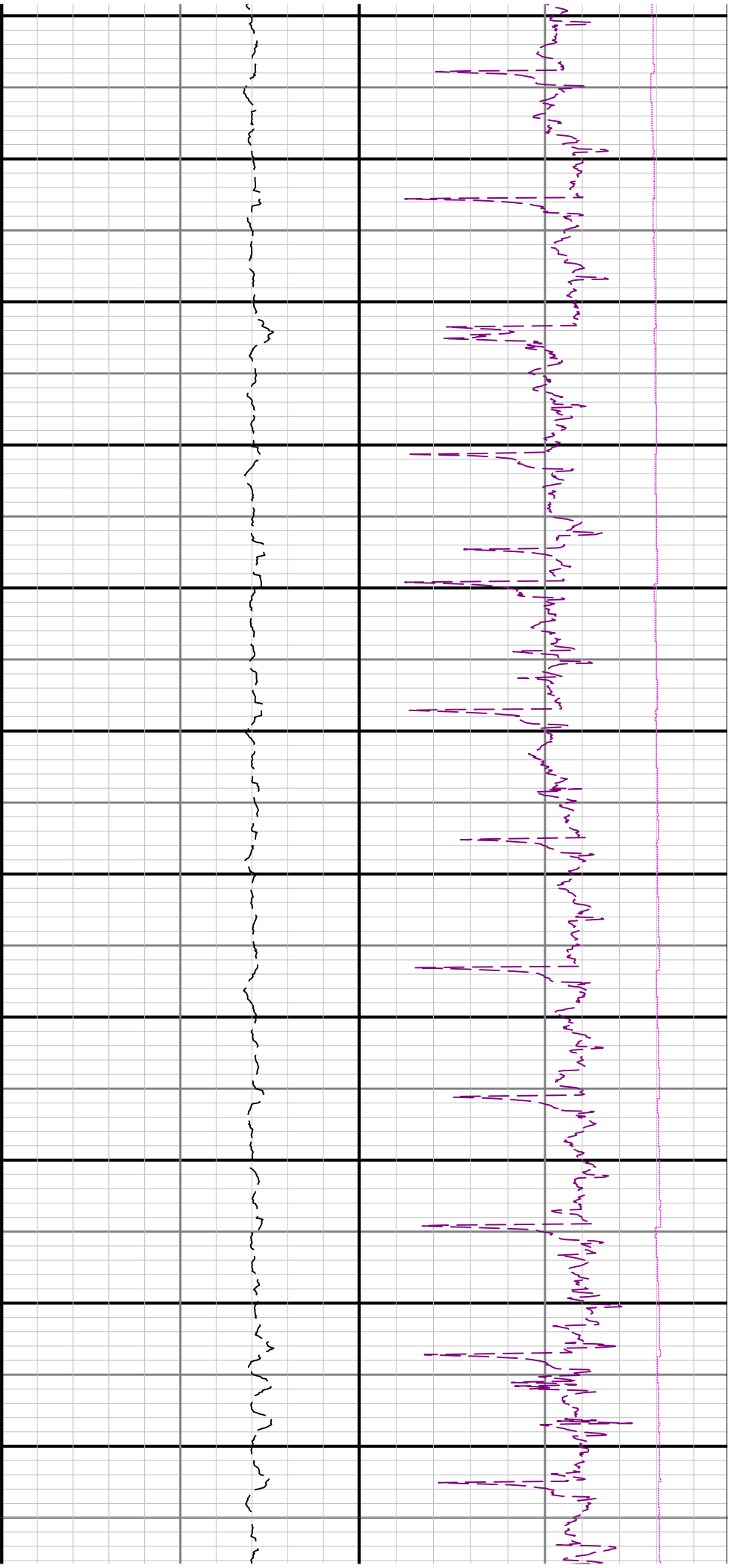


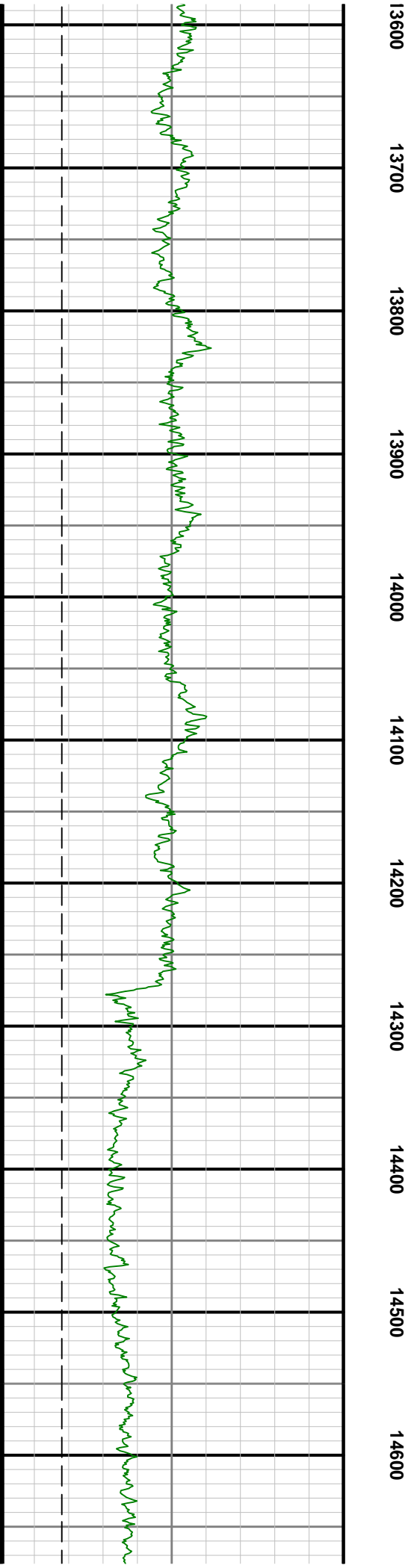
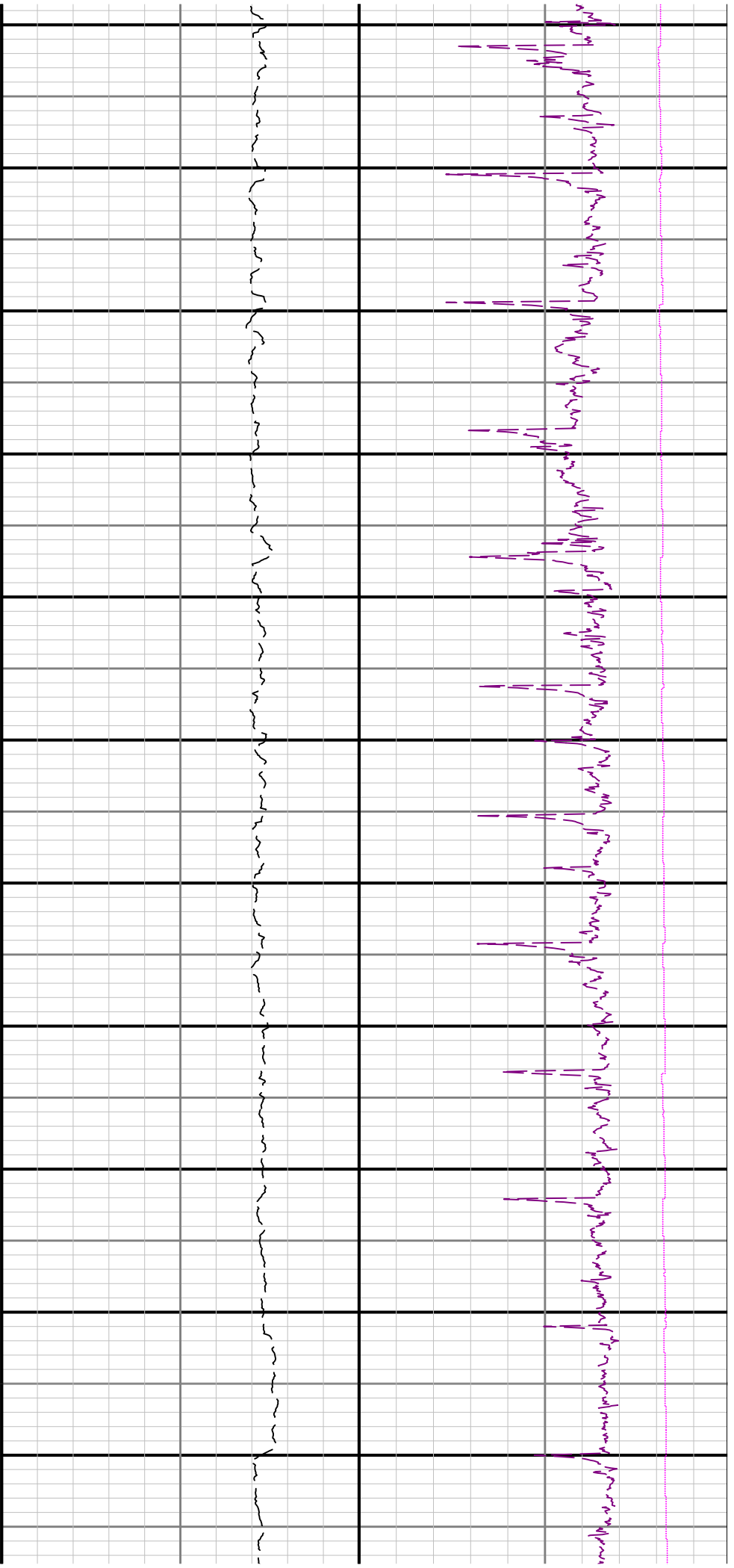


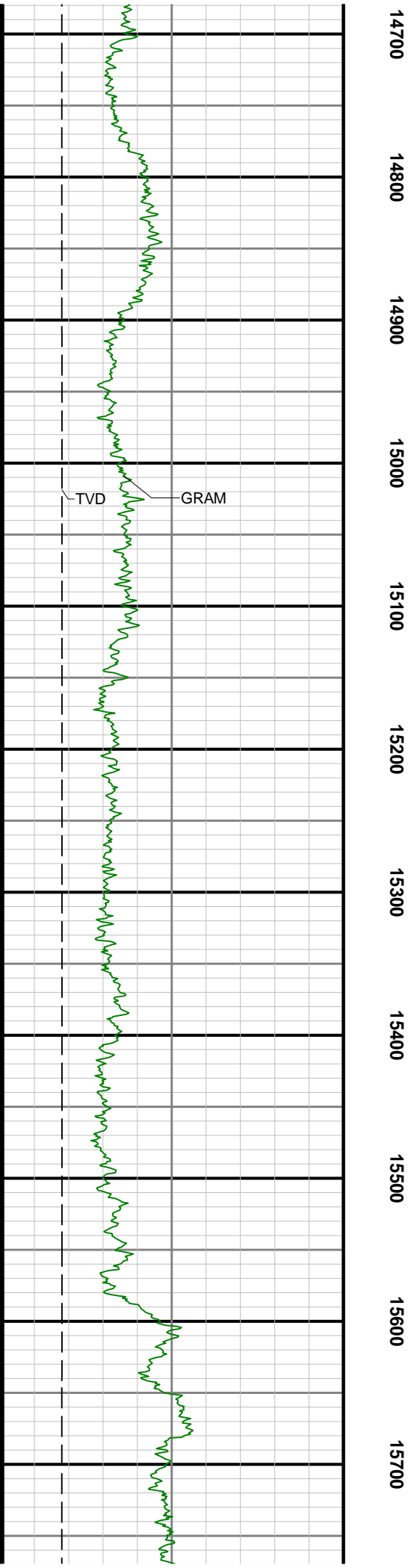
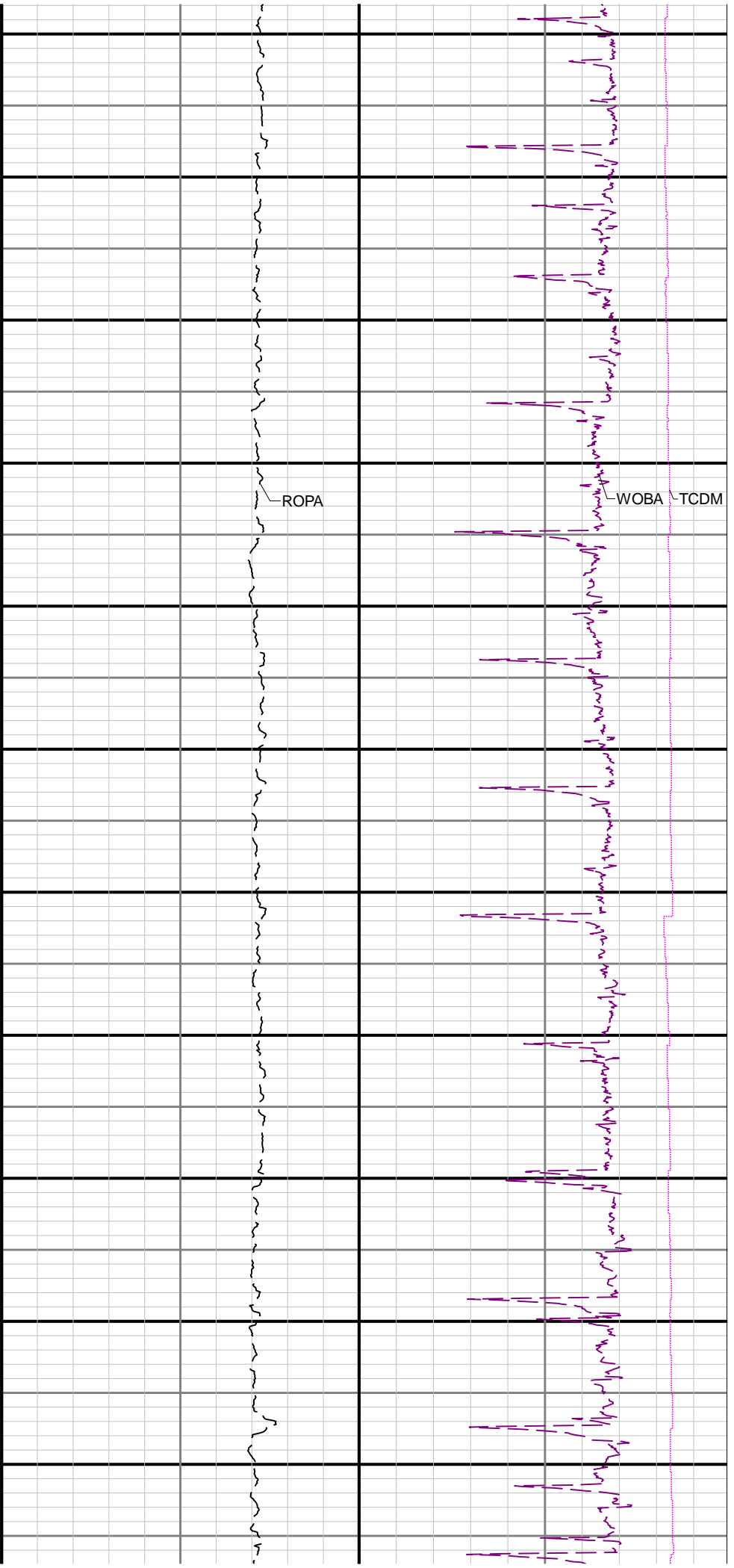


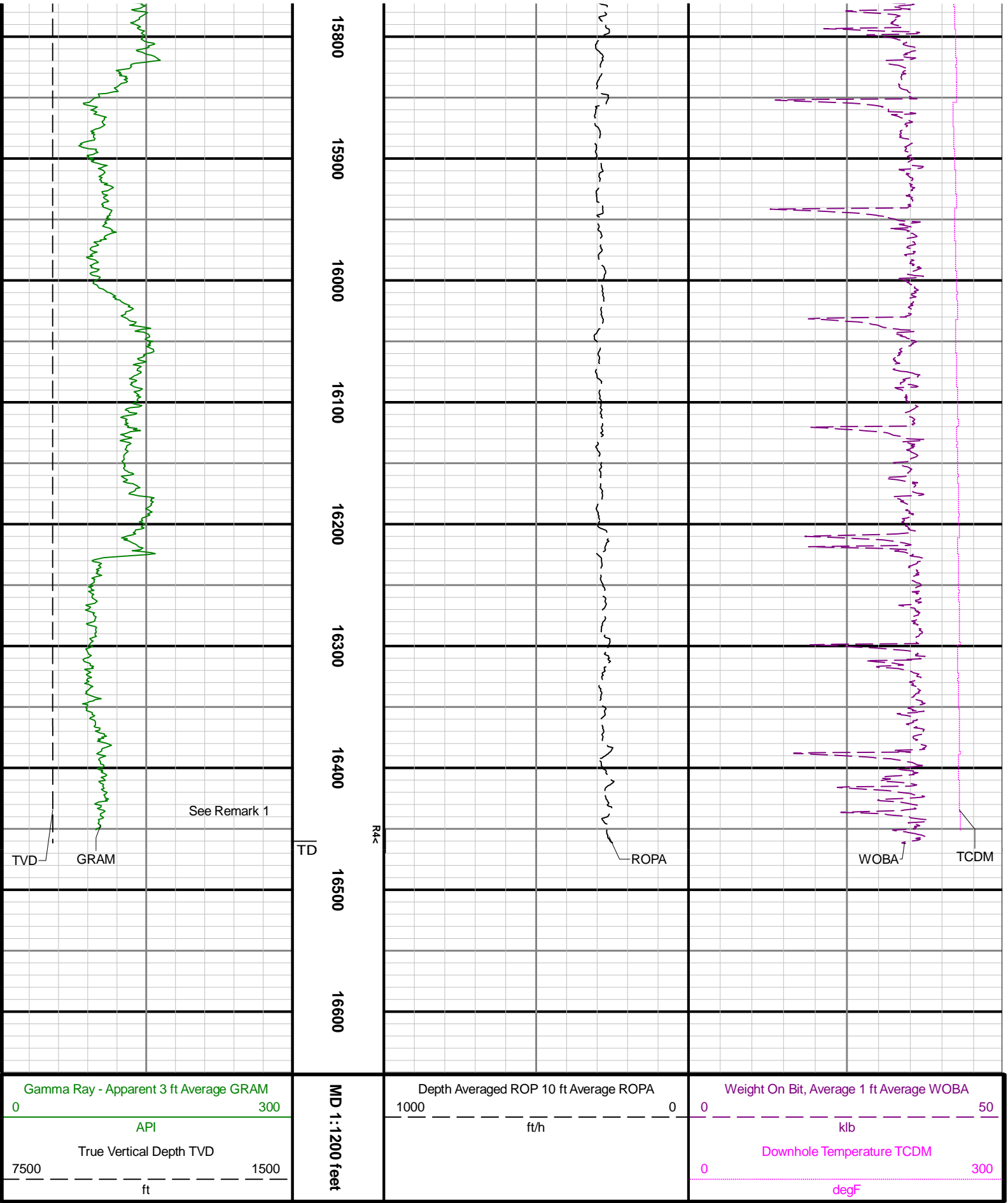












See Remark 1

MD 1:1200 feet

API
True Vertical Depth TVD
7500 1500
ft