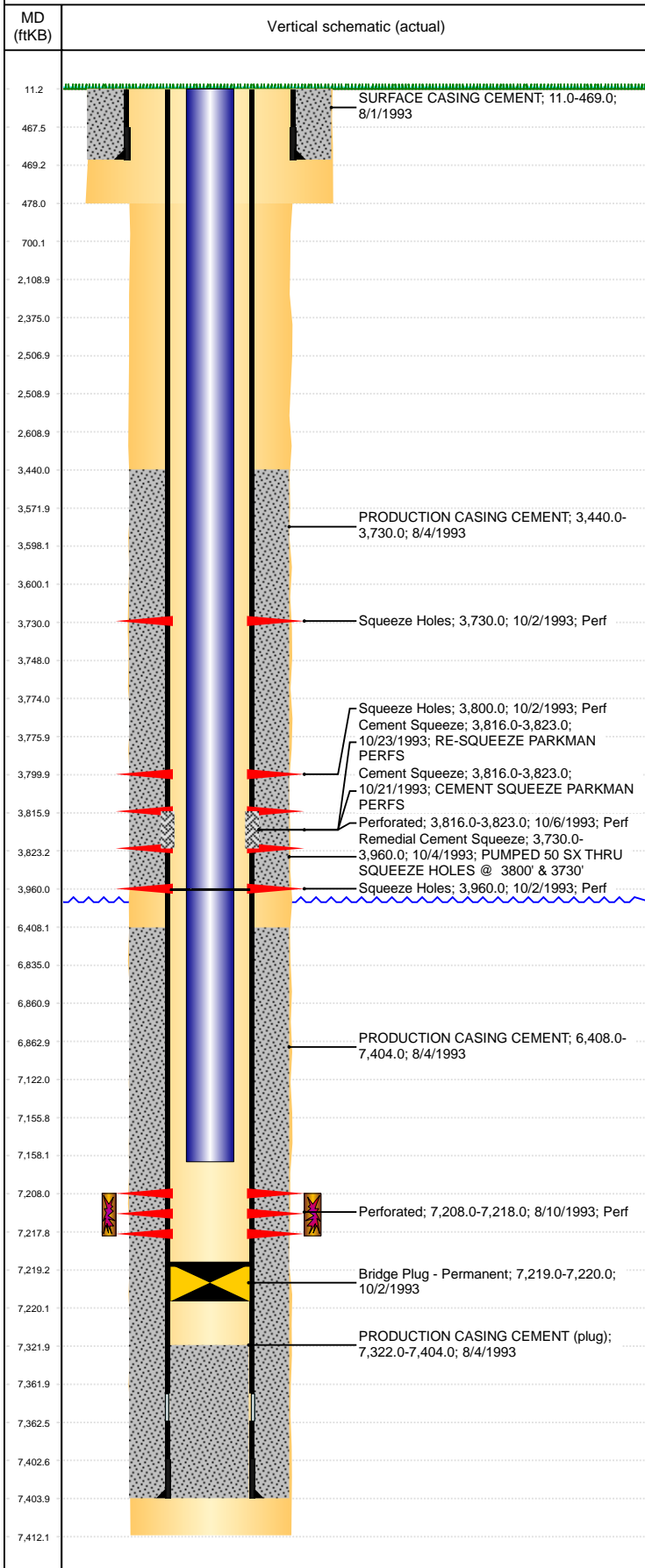


Well Name: OTTOSON 32-15

VERTICAL, ORIGINAL HOLE, 8/29/2019 3:33:54 PM



Well Header										
API 05-123-17118			Business Unit DJ BASIN			District 15		Well Config VERTICAL		
KB - GL / MSL (ft... 11.00		Spud Date 7/31/1993		P & A Date		Well Production Status PR			SoRT No	
Comment										
Surface Location (Congressional)										
Qtr 3 SW	Qtr 4 SE	Section 32	Twonshp 7	Twonsh... N	Range 65	Rng E/... W	Actual Latitude (°) 40.52608458		Actual Longitude (°) -104.68433920	
Wellbore Sections										
Section Des			Size (in)			Act Top, MD (ftKB)		Act Btm, MD (ftKB)		
SURFACE			12 1/4			11		478		
PRODUCTION			7 7/8			478		7,412		
Casing Strings										
Csg Des			Run Date		OD (in)	Wt/Len (lb/ft)	Grade	Top, MD (ftKB)	MD (ftKB)	
Surface			8/1/1993		8 5/8	24.00	M-50	11.0	469.0	
Production			8/4/1993		4 1/2	11.60	WC-75	11.0	7,404.0	
Cement										
Des					Start Date		Top (ftKB)		Btm (ftKB)	
SURFACE CASING CEMENT					8/1/1993		11.0		469.0	
PRODUCTION CASING CEMENT					8/4/1993		3,440.0		3,730.0	
PRODUCTION CASING CEMENT					8/4/1993		6,408.0		7,404.0	
Remedial Cement Squeeze					10/4/1993		3,730.0		3,960.0	
Cement Squeeze					10/21/1993		3,816.0		3,823.0	
Cement Squeeze					10/23/1993		3,816.0		3,823.0	
Zone Statuses										
Zone Name		Status Date	Status	Fluid Type	Job				Prod Method	
CODELL		9/3/1993	PR	Oil	DRILLING/COMPLETION - ORIGINAL, 7/31/1993...					
Perforation Data										
Linked Zone			Bnch/Stg	Entered Shot Total	Top (ftKB)		Btm (ftKB)		Date	
PARKMAN, ORIGINAL HOLE				2	3,730.00		3,730.00		10/2/1993	
				2	3,800.00		3,800.00		10/2/1993	
				14	3,816.00		3,823.00		10/6/1993	
				2	3,960.00		3,960.00		10/2/1993	
CODELL, ORIGINAL HOLE				20	7,208.00		7,218.00		8/10/1993	
Stimulation Intervals										
Zone					Start Date		Top (ftKB)		Btm (ftKB)	
CODELL, ORIGINAL HOLE					8/12/1993		7,208.0		7,218.0	
Other In Hole										
Run Date		Des				OD (in)	Top (ftKB)		Btm (ftKB)	
10/2/1993		Bridge Plug - Permanent				3.99	7,219.0		7,220.0	
Logs										
Date		Type				Top, MD (ftKB)		Btm, MD (ftKB)		
8/4/1993		COMPENSATED DENSITY				3,760.0		7,408.0		
8/4/1993		INDUCTION				470.0		7,410.0		
8/10/1993		CEMENT BOND				2,940.0		7,317.0		
10/4/1993		CEMENT BOND				3,500.0		3,914.0		
10/6/1993		CEMENT BOND				3,000.0		3,905.0		
10/26/1993		CEMENT BOND				2,980.0		3,886.0		
1/18/2019		GYRO				11.0		7,050.0		
Plug Back Total Depths										
Date		Type			Com				Depth (ftKB)	
8/10/1993		FILL			DEPTH LOGGER ON CBL				7,322.0	
4/19/1994		PLUG REMNANTS			DRILL CIBP AND CLEAN OUT TO 7219'				7,219.0	