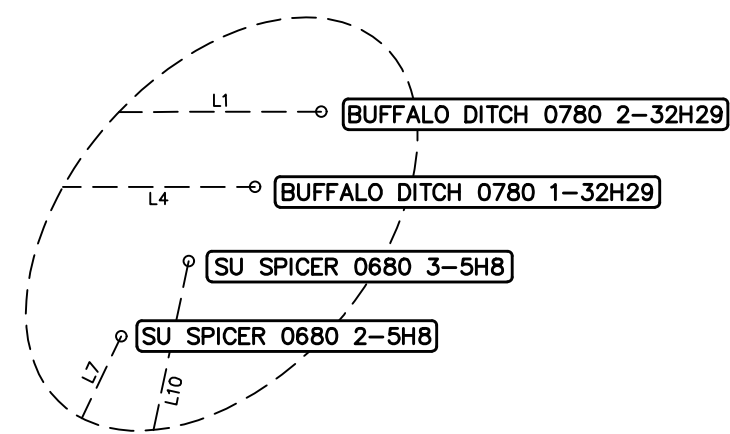


LINE TABLE		
LINE	DIRECTION	LENGTH
L1	S89°56'26"W	268.74'
L2	N00°27'11"W	450.01'
L3	N00°32'56"W	8927.96'
L4	S89°55'35"W	565.38'
L5	N00°27'11"W	450.01'
L6	N00°32'56"W	8943.67'
L7	S25°35'03"W	1258.16'
L8	S11°38'57"W	459.10'
L9	S01°33'11"W	10224.87'
L10	S11°48'23"W	1174.15'
L11	S11°38'57"W	459.62'
L12	S01°28'41"W	10219.70'

Surface Hole Detail
No Scale



REV: 3 05-24-19 M.D. (BHL MOVES & WELL NAME CHANGES)

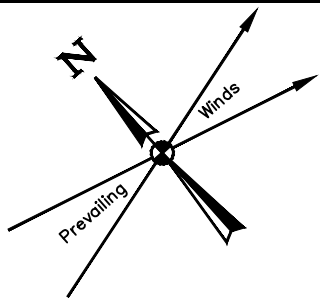


UELS, LLC
Corporate Office * 85 South 200 East
Vernal, UT 84078 * (435) 789-1017

SandRidge Exploration & Production, LLC

SPICER S32 ANNEX PAD
SW 1/4 SW1/4, SECTION 32, T7N, R80W, 6th P.M.
JACKSON COUNTY, COLORADO

SURVEYED BY	JAMES FRESHWATER	10-15-18	SCALE
DRAWN BY	T.L.L.	10-18-18	1" = 1000'
TARGET BOTTOM HOLE DRAWING			FIGURE #6



Property Line

1 1/16 Section Line

Proposed Access Road "A"

Proposed Access Road "B"

○ BUFFALO DITCH 0780 2-32H29

○ BUFFALO DITCH 0780 1-32H29

○ SU SPICER 0680 3-5H8

○ SU SPICER 0680 2-5H8

$S89^{\circ}56'26''W - 268.74'$
(To Kick Off Point)

$S89^{\circ}55'35''W - 565.38'$
(To Kick Off Point)

$N102^{\circ}27'11''W - 450.01'$
(To Landing Point)

Kick Off Point

$S75^{\circ}35'03''W - 1258.16'$
(To Kick Off Point)

$S11^{\circ}48'23''W - 1174.15'$
(To Kick Off Point)

Edge Of Existing Spicer S32 Well Pad

REV: 1 05-24-19 M.D. (WELL NAME CHANGES)

SandRidge Exploration & Production, LLC

SPICER S32 ANNEX PAD
SW 1/4 SW1/4, SECTION 32, T7N, R80W, 6th P.M.
JACKSON COUNTY, COLORADO

SURVEYED BY	JAMES FRESHWATER	10-15-18	SCALE
DRAWN BY	T.L.L.	10-18-18	1" = 1000'

MULTI-WELL PLAN

FIGURE #7

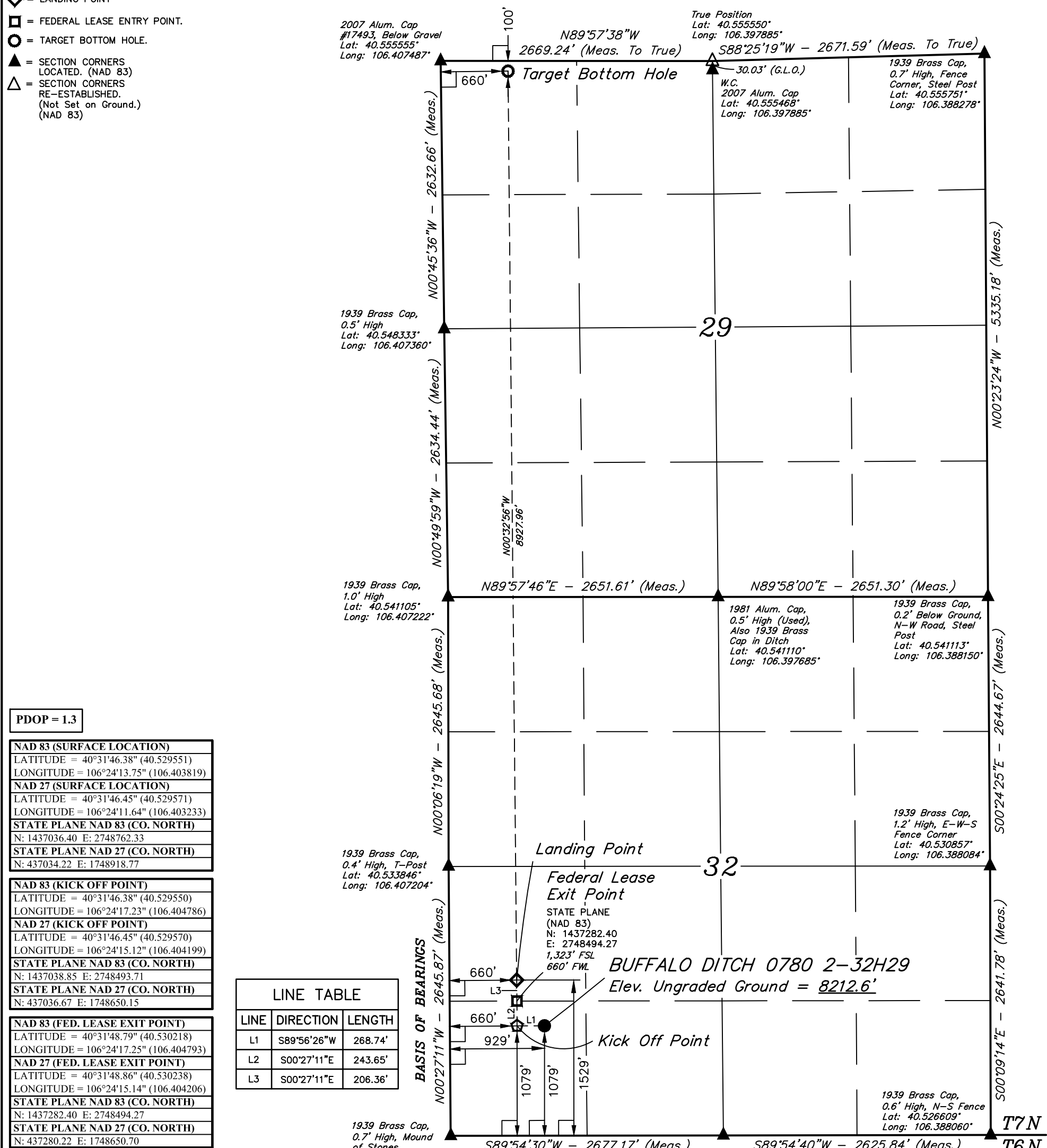


UELS, LLC
Corporate Office * 85 South 200 East
Vernal, UT 84078 * (435) 789-1017

LEGEND:

- └─┘ = 90° SYMBOL
- = PROPOSED WELLHEAD.
- ◊ = KICK OFF POINT.
- ◊ = LANDING POINT
- ◻ = FEDERAL LEASE ENTRY POINT.
- = TARGET BOTTOM HOLE.
- ▲ = SECTION CORNERS LOCATED. (NAD 83)
- △ = SECTION CORNERS RE-ESTABLISHED. (Not Set on Ground.) (NAD 83)

T7N, R80W, 6th P.M.



PDOP = 1.3

NAD 83 (SURFACE LOCATION)	
LATITUDE = 40°31'46.38" (40.529551)	
LONGITUDE = 106°24'13.75" (106.403819)	
NAD 27 (SURFACE LOCATION)	
LATITUDE = 40°31'46.45" (40.529571)	
LONGITUDE = 106°24'11.64" (106.403233)	
STATE PLANE NAD 83 (CO. NORTH)	
N: 1437036.40 E: 2748762.33	
STATE PLANE NAD 27 (CO. NORTH)	
N: 437034.22 E: 1748918.77	

NAD 83 (KICK OFF POINT)	
LATITUDE = 40°31'46.38" (40.529550)	
LONGITUDE = 106°24'17.23" (106.404786)	
NAD 27 (KICK OFF POINT)	
LATITUDE = 40°31'46.45" (40.529570)	
LONGITUDE = 106°24'15.12" (106.404199)	
STATE PLANE NAD 83 (CO. NORTH)	
N: 1437038.85 E: 2748493.71	
STATE PLANE NAD 27 (CO. NORTH)	
N: 437036.67 E: 1748650.15	

NAD 83 (FED. LEASE EXIT POINT)	
LATITUDE = 40°31'48.79" (40.530218)	
LONGITUDE = 106°24'17.25" (106.404793)	
NAD 27 (FED. LEASE EXIT POINT)	
LATITUDE = 40°31'48.86" (40.530238)	
LONGITUDE = 106°24'15.14" (106.404206)	
STATE PLANE NAD 83 (CO. NORTH)	
N: 1437282.40 E: 2748494.27	
STATE PLANE NAD 27 (CO. NORTH)	
N: 437280.22 E: 1748650.70	

NAD 83 (LANDING POINT)	
LATITUDE = 40°31'50.82" (40.530785)	
LONGITUDE = 106°24'17.27" (106.404799)	
NAD 27 (LANDING POINT)	
LATITUDE = 40°31'50.90" (40.530804)	
LONGITUDE = 106°24'15.16" (106.404212)	
STATE PLANE NAD 83 (CO. NORTH)	
N: 1437488.67 E: 2748494.73	
STATE PLANE NAD 27 (CO. NORTH)	
N: 437486.49 E: 1748651.17	

NAD 83 (TARGET BOTTOM HOLE)	
LATITUDE = 40°33'19.01" (40.555280)	
LONGITUDE = 106°24'18.39" (106.405107)	
NAD 27 (TARGET BOTTOM HOLE)	
LATITUDE = 40°33'19.08" (40.555300)	
LONGITUDE = 106°24'16.27" (106.404521)	
STATE PLANE NAD 83 (CO. NORTH)	
N: 1446412.89 E: 2748500.02	
STATE PLANE NAD 27 (CO. NORTH)	
N: 446410.74 E: 1748656.37	

LINE TABLE		
LINE	DIRECTION	LENGTH
L1	S89°56'26"W	268.74'
L2	S00°27'11"E	243.65'
L3	S00°27'11"E	206.36'

BASIS OF BEARINGS
BEARINGS ARE BASED ON THE ASSUMPTION THAT THE WEST LINE OF THE SOUTHWEST 1/4 OF SECTION 32 BEARS N00°27'11"W. SOUTHWEST CORNER IS A 1939 BRASS CAP. WEST 1/4 CORNER IS A 1939 BRASS CAP.

BASIS OF ELEVATION
SPOT ELEVATION AT THE SOUTHEAST CORNER OF SECTION 29, T7N, R80W, 6th P.M., TAKEN FROM THE COALMONT QUADRANGLE, COLORADO, JACKSON COUNTY 7.5 MINUTE QUAD. (TOPOGRAPHIC MAP) PUBLISHED BY THE UNITED STATES DEPARTMENT OF THE INTERIOR, GEOLOGICAL SURVEY. SAID ELEVATION IS MARKED AS BEING 8156 FEET.



UELS, LLC
Corporate Office * 85 South 200 East
Vernal, UT 84078 * (435) 789-1017



CERTIFICATE
THIS IS TO CERTIFY THAT THE ABOVE PLAT WAS PREPARED FROM FIELD NOTES OF ACTUAL SURVEYS MADE BY ME OR UNDER MY SUPERVISION AND THAT THE SAME ARE TRUE AND CORRECT TO THE BEST OF MY KNOWLEDGE AND BELIEF.

James Freshwater
REGISTERED LAND SURVEYOR
REGISTRATION NO. 28285
STATE OF COLORADO

SandRidge Exploration & Production, LLC

BUFFALO DITCH 0780 2-32H29
SW 1/4 SW 1/4, SECTION 32, T7N, R80W, 6th P.M.
JACKSON COUNTY, COLORADO

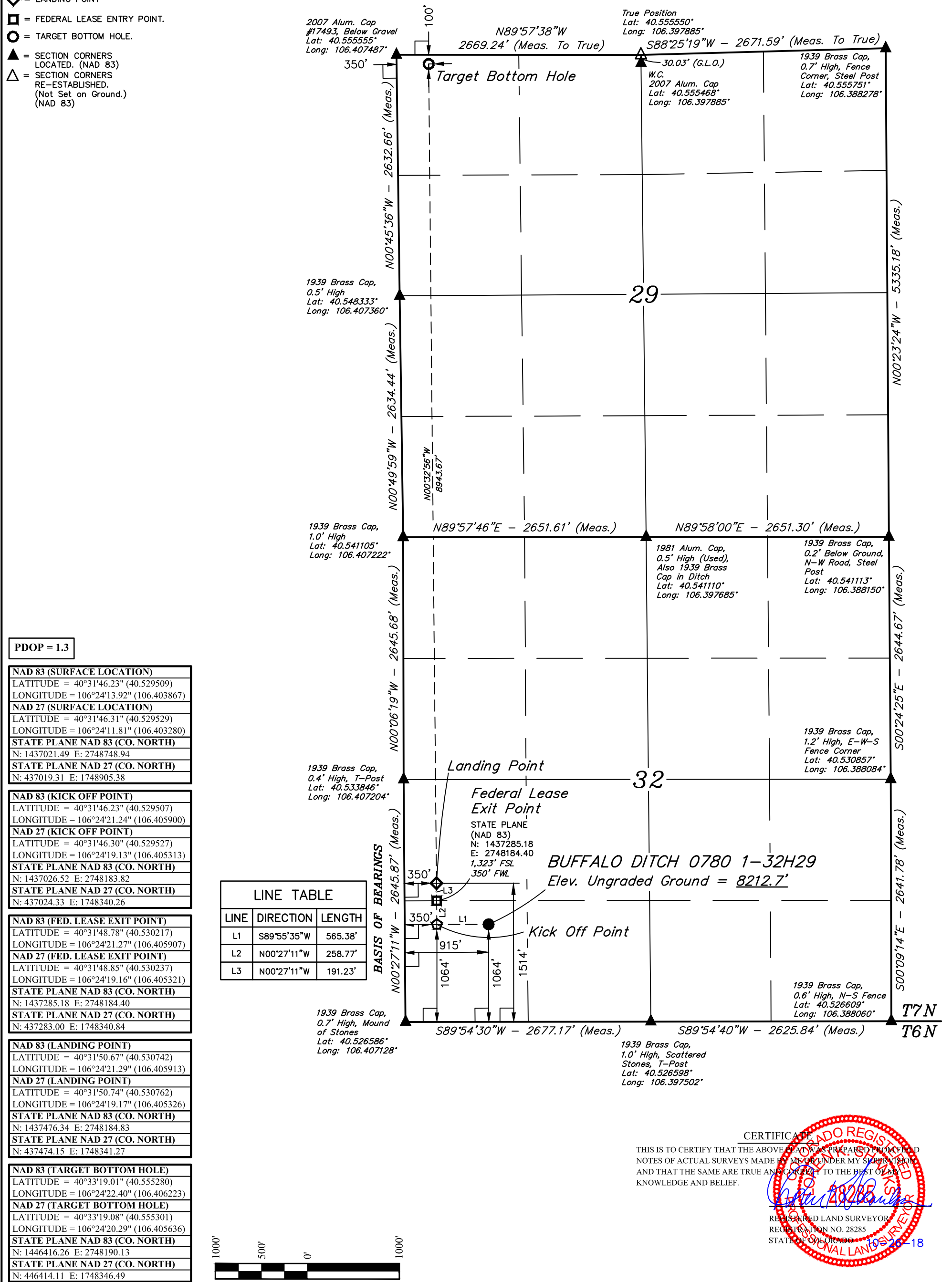
SURVEYED BY	JAMES FRESHWATER	10-15-18	SCALE
DRAWN BY	T.L.L.	10-16-18	1" = 1000'

WELL LOCATION PLAT

LEGEND:

- └─ = 90° SYMBOL
- = PROPOSED WELLHEAD.
- ◊ = KICK OFF POINT.
- ◊ = LANDING POINT
- ◻ = FEDERAL LEASE ENTRY POINT.
- = TARGET BOTTOM HOLE.
- ▲ = SECTION CORNERS LOCATED. (NAD 83)
- △ = SECTION CORNERS RE-ESTABLISHED. (Not Set on Ground.) (NAD 83)

T7N, R80W, 6th P.M.



PDOP = 1.3

NAD 83 (SURFACE LOCATION)	
LATITUDE	= 40°31'46.23" (40.529509)
LONGITUDE	= 106°24'13.92" (106.403867)
NAD 27 (SURFACE LOCATION)	
LATITUDE	= 40°31'46.31" (40.529529)
LONGITUDE	= 106°24'11.81" (106.403280)
STATE PLANE NAD 83 (CO. NORTH)	
N	: 1437021.49 E: 2748748.94
STATE PLANE NAD 27 (CO. NORTH)	
N	: 437019.31 E: 1748905.38

NAD 83 (KICK OFF POINT)	
LATITUDE	= 40°31'46.23" (40.529507)
LONGITUDE	= 106°24'21.24" (106.405900)
NAD 27 (KICK OFF POINT)	
LATITUDE	= 40°31'46.30" (40.529527)
LONGITUDE	= 106°24'19.13" (106.405313)
STATE PLANE NAD 83 (CO. NORTH)	
N	: 1437026.52 E: 2748183.82
STATE PLANE NAD 27 (CO. NORTH)	
N	: 437024.33 E: 1748340.26

NAD 83 (FED. LEASE EXIT POINT)	
LATITUDE	= 40°31'48.78" (40.530217)
LONGITUDE	= 106°24'21.27" (106.405907)
NAD 27 (FED. LEASE EXIT POINT)	
LATITUDE	= 40°31'48.85" (40.530237)
LONGITUDE	= 106°24'19.16" (106.405321)
STATE PLANE NAD 83 (CO. NORTH)	
N	: 1437285.18 E: 2748184.40
STATE PLANE NAD 27 (CO. NORTH)	
N	: 437283.00 E: 1748340.84

NAD 83 (LANDING POINT)	
LATITUDE	= 40°31'50.67" (40.530742)
LONGITUDE	= 106°24'21.29" (106.405913)
NAD 27 (LANDING POINT)	
LATITUDE	= 40°31'50.74" (40.530762)
LONGITUDE	= 106°24'19.17" (106.405326)
STATE PLANE NAD 83 (CO. NORTH)	
N	: 1437476.34 E: 2748184.83
STATE PLANE NAD 27 (CO. NORTH)	
N	: 437474.15 E: 1748341.27

NAD 83 (TARGET BOTTOM HOLE)	
LATITUDE	= 40°33'19.01" (40.555280)
LONGITUDE	= 106°24'22.40" (106.406223)
NAD 27 (TARGET BOTTOM HOLE)	
LATITUDE	= 40°33'19.08" (40.555301)
LONGITUDE	= 106°24'20.29" (106.405636)
STATE PLANE NAD 83 (CO. NORTH)	
N	: 1446416.26 E: 2748190.13
STATE PLANE NAD 27 (CO. NORTH)	
N	: 446414.11 E: 1748346.49

LINE TABLE		
LINE	DIRECTION	LENGTH
L1	S89°55'35"W	565.38'
L2	N00°27'11"W	258.77'
L3	N00°27'11"W	191.23'



BASIS OF BEARINGS
BEARINGS ARE BASED ON THE ASSUMPTION THAT THE WEST LINE OF THE SOUTHWEST 1/4 OF SECTION 32 BEARS N00°27'11"W. SOUTHWEST CORNER IS A 1939 BRASS CAP. WEST 1/4 CORNER IS A 1939 BRASS CAP.

BASIS OF ELEVATION
SPOT ELEVATION AT THE SOUTHEAST CORNER OF SECTION 29, T7N, R80W, 6th P.M., TAKEN FROM THE COALMONT QUADRANGLE, COLORADO, JACKSON COUNTY 7.5 MINUTE QUAD. (TOPOGRAPHIC MAP) PUBLISHED BY THE UNITED STATES DEPARTMENT OF THE INTERIOR, GEOLOGICAL SURVEY. SAID ELEVATION IS MARKED AS BEING 8156 FEET.



UELS, LLC
Corporate Office * 85 South 200 East
Vernal, UT 84078 * (435) 789-1017



CERTIFICATE
THIS IS TO CERTIFY THAT THE ABOVE PLAT WAS PREPARED FROM FIELD NOTES OF ACTUAL SURVEYS MADE BY ME OR UNDER MY SUPERVISION AND THAT THE SAME ARE TRUE AND CORRECT TO THE BEST OF MY KNOWLEDGE AND BELIEF.

James Freshwater
REGISTERED LAND SURVEYOR
REGISTRATION NO. 28285
STATE OF COLORADO

SandRidge Exploration & Production, LLC
BUFFALO DITCH 0780 1-32H29
SW 1/4 SW 1/4, SECTION 32, T7N, R80W, 6th P.M.
JACKSON COUNTY, COLORADO

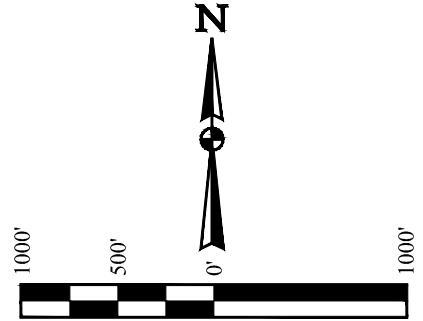
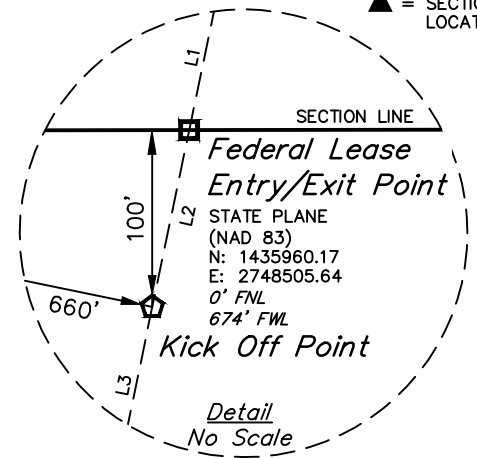
SURVEYED BY	JAMES FRESHWATER	10-15-18	SCALE
DRAWN BY	T.L.L.	10-16-18	1" = 1000'

WELL LOCATION PLAT

T7N, R80W, 6th P.M.

- LEGEND:**
- = PROPOSED WELLHEAD.
 - = KICK OFF POINT.
 - ◇ = LANDING POINT
 - = FEDERAL LEASE ENTRY POINT.
 - = TARGET BOTTOM HOLE.
 - ▲ = SECTION CORNERS LOCATED. (NAD 83)

NOTE:
Distances referenced on plat to section lines are perpendicular.



BASIS OF BEARINGS
BEARINGS ARE BASED ON THE ASSUMPTION THAT THE WEST LINE OF THE SOUTHWEST 1/4 OF SECTION 32 BEARS N00°27'11"W. SOUTHWEST CORNER IS A 1939 BRASS CAP. WEST 1/4 CORNER IS A 1939 BRASS CAP.

BASIS OF ELEVATION
SPOT ELEVATION AT THE SOUTHEAST CORNER OF SECTION 29, T7N, R80W, 6th P.M., TAKEN FROM THE COALMONT QUADRANGLE, COLORADO, JACKSON COUNTY 7.5 MINUTE QUAD. (TOPOGRAPHIC MAP) PUBLISHED BY THE UNITED STATES DEPARTMENT OF THE INTERIOR, GEOLOGICAL SURVEY. SAID ELEVATION IS MARKED AS BEING 8156 FEET.

NAD 83 (SURFACE LOCATION)	
LATITUDE = 40°31'46.09" (40.529468)	
LONGITUDE = 106°24'14.09" (106.403915)	
NAD 27 (SURFACE LOCATION)	
LATITUDE = 40°31'46.16" (40.529488)	
LONGITUDE = 106°24'11.98" (106.403328)	
STATE PLANE NAD 83 (CO. NORTH)	
N: 1437006.71 E: 2748735.53	
STATE PLANE NAD 27 (CO. NORTH)	
N: 437004.53 E: 1748891.97	

PDOP = 1.3

NAD 83 (FED. LEASE ENTRY/EXIT PT.)	
LATITUDE = 40°31'35.72" (40.526589)	
LONGITUDE = 106°24'16.93" (106.404703)	
NAD 27 (FED. LEASE ENTRY/EXIT PT.)	
LATITUDE = 40°31'35.79" (40.526609)	
LONGITUDE = 106°24'14.82" (106.404117)	
STATE PLANE NAD 83 (CO. NORTH)	
N: 1435960.17 E: 2748505.64	
STATE PLANE NAD 27 (CO. NORTH)	
N: 435957.98 E: 1748662.09	

NAD 83 (KICK OFF POINT)	
LATITUDE = 40°31'34.73" (40.526315)	
LONGITUDE = 106°24'17.20" (106.404778)	
NAD 27 (KICK OFF POINT)	
LATITUDE = 40°31'34.81" (40.526335)	
LONGITUDE = 106°24'15.09" (106.404192)	
STATE PLANE NAD 83 (CO. NORTH)	
N: 1435860.39 E: 2748483.72	
STATE PLANE NAD 27 (CO. NORTH)	
N: 435858.20 E: 1748640.17	

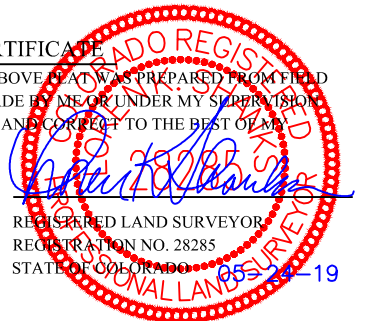
NAD 83 (LANDING POINT)	
LATITUDE = 40°31'30.29" (40.525080)	
LONGITUDE = 106°24'18.40" (106.405112)	
NAD 27 (LANDING POINT)	
LATITUDE = 40°31'30.36" (40.525100)	
LONGITUDE = 106°24'16.29" (106.404525)	
STATE PLANE NAD 83 (CO. NORTH)	
N: 1435411.40 E: 2748386.38	
STATE PLANE NAD 27 (CO. NORTH)	
N: 435409.21 E: 1748542.84	

NAD 83 (FED. LEASE ENTRY/EXIT PT.)	
LATITUDE = 40°30'15.44" (40.504290)	
LONGITUDE = 106°24'20.93" (106.405814)	
NAD 27 (FED. LEASE ENTRY/EXIT PT.)	
LATITUDE = 40°30'15.51" (40.504310)	
LONGITUDE = 106°24'18.82" (106.405227)	
STATE PLANE NAD 83 (CO. NORTH)	
N: 1427839.98 E: 2748113.92	
STATE PLANE NAD 27 (CO. NORTH)	
N: 427837.75 E: 1748270.44	

LINE TABLE		
LINE	DIRECTION	LENGTH
L1	S11°48'23"W	1071.95'
L2	S11°48'23"W	102.20'
L3	S11°38'57"W	459.62'

NAD 83 (TARGET BOTTOM HOLE)	
LATITUDE = 40°29'49.37" (40.497049)	
LONGITUDE = 106°24'21.81" (106.406058)	
NAD 27 (TARGET BOTTOM HOLE)	
LATITUDE = 40°29'49.44" (40.497068)	
LONGITUDE = 106°24'19.70" (106.405472)	
STATE PLANE NAD 83 (CO. NORTH)	
N: 1425202.62 E: 2748019.01	
STATE PLANE NAD 27 (CO. NORTH)	
N: 425200.39 E: 1748175.57	

CERTIFICATE
THIS IS TO CERTIFY THAT THE ABOVE PLAT WAS PREPARED FROM FIELD NOTES OF ACTUAL SURVEYS MADE BY ME OR UNDER MY SUPERVISION AND THAT THE SAME ARE TRUE AND CORRECT TO THE BEST OF MY KNOWLEDGE AND BELIEF.



REV: 1 05-24-19 M.D. (NAME & BHL CHANGE)

SandRidge Exploration & Production, LLC

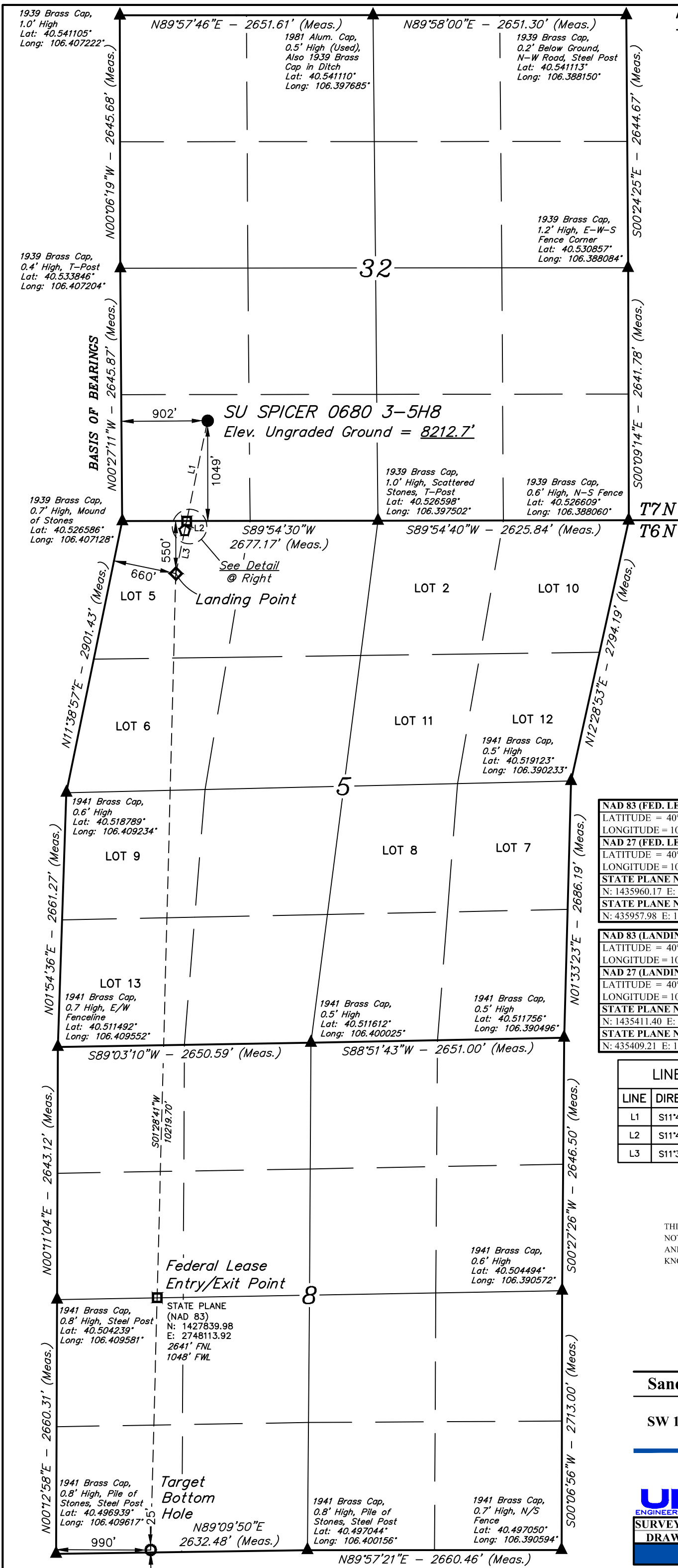
SU SPICER 0680 3-5H8
SW 1/4 SW 1/4, SECTION 32, T7N, R80W, 6th P.M.
JACKSON COUNTY, COLORADO



UELS, LLC
Corporate Office * 85 South 200 East
Vernal, UT 84078 * (435) 789-1017

SURVEYED BY	JAMES FRESHWATER	10-15-18	SCALE
DRAWN BY	T.L.L.	10-16-18	1" = 1000'

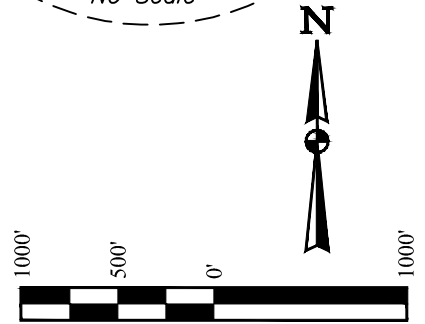
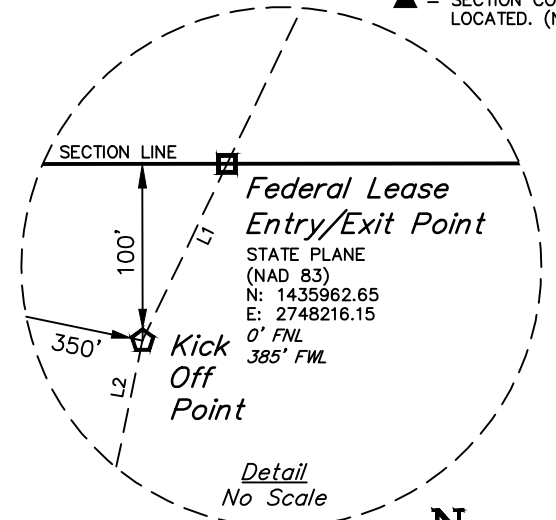
WELL LOCATION PLAT



T7N, R80W, 6th P.M.

- LEGEND:**
- = PROPOSED WELLHEAD.
 - ◇ = KICK OFF POINT.
 - = LANDING POINT
 - = FEDERAL LEASE ENTRY POINT.
 - = TARGET BOTTOM HOLE.
 - ▲ = SECTION CORNERS LOCATED. (NAD 83)

NOTE:
Distances referenced on plat to section lines are perpendicular.



BASIS OF BEARINGS
BEARINGS ARE BASED ON THE ASSUMPTION THAT THE WEST LINE OF THE SOUTHWEST 1/4 OF SECTION 32 BEARS N00°27'11\"/>

BASIS OF ELEVATION
SPOT ELEVATION AT THE SOUTHEAST CORNER OF SECTION 29, T7N, R80W, 6th P.M., TAKEN FROM THE COALMONT QUADRANGLE, COLORADO, JACKSON COUNTY 7.5 MINUTE QUAD. (TOPOGRAPHIC MAP) PUBLISHED BY THE UNITED STATES DEPARTMENT OF THE INTERIOR, GEOLOGICAL SURVEY. SAID ELEVATION IS MARKED AS BEING 8156 FEET.

NAD 83 (SURFACE LOCATION)	
LATITUDE = 40°31'45.94" (40.529427)	
LONGITUDE = 106°24'14.27" (106.403963)	
NAD 27 (SURFACE LOCATION)	
LATITUDE = 40°31'46.01" (40.529447)	
LONGITUDE = 106°24'12.16" (106.403377)	
STATE PLANE NAD 83 (CO. NORTH)	
N: 1435991.84 E: 2748721.85	
STATE PLANE NAD 27 (CO. NORTH)	
N: 436989.66 E: 1748878.29	

PDOP = 1.3

NAD 83 (KICK OFF POINT)	
LATITUDE = 40°31'34.73" (40.526314)	
LONGITUDE = 106°24'21.30" (106.405917)	
NAD 27 (KICK OFF POINT)	
LATITUDE = 40°31'34.80" (40.526333)	
LONGITUDE = 106°24'19.19" (106.405330)	
STATE PLANE NAD 83 (CO. NORTH)	
N: 1435863.11 E: 2748167.24	
STATE PLANE NAD 27 (CO. NORTH)	
N: 435860.91 E: 1748323.70	

NAD 83 (FED. LEASE ENTRY/EXIT PT.)	
LATITUDE = 40°31'35.72" (40.526588)	
LONGITUDE = 106°24'20.68" (106.405745)	
NAD 27 (FED. LEASE ENTRY/EXIT PT.)	
LATITUDE = 40°31'35.79" (40.526608)	
LONGITUDE = 106°24'18.57" (106.405158)	
STATE PLANE NAD 83 (CO. NORTH)	
N: 1435962.65 E: 2748216.15	
STATE PLANE NAD 27 (CO. NORTH)	
N: 435960.46 E: 1748372.61	

NAD 83 (LANDING POINT)	
LATITUDE = 40°31'30.29" (40.525080)	
LONGITUDE = 106°24'22.50" (106.406250)	
NAD 27 (LANDING POINT)	
LATITUDE = 40°31'30.36" (40.525100)	
LONGITUDE = 106°24'20.39" (106.405664)	
STATE PLANE NAD 83 (CO. NORTH)	
N: 1435414.62 E: 2748070.01	
STATE PLANE NAD 27 (CO. NORTH)	
N: 435412.42 E: 1748226.47	

NAD 83 (FED. LEASE ENTRY/EXIT PT.)	
LATITUDE = 40°30'15.39" (40.504274)	
LONGITUDE = 106°24'25.16" (106.406988)	
NAD 27 (FED. LEASE ENTRY/EXIT PT.)	
LATITUDE = 40°30'15.46" (40.504294)	
LONGITUDE = 106°24'23.04" (106.406401)	
STATE PLANE NAD 83 (CO. NORTH)	
N: 1427837.55 E: 2747787.42	
STATE PLANE NAD 27 (CO. NORTH)	
N: 427835.32 E: 1747943.95	

LINE TABLE		
LINE	DIRECTION	LENGTH
L1	S25°35'03"W	110.96'
L2	S11°38'57"W	459.10'

NAD 83 (TARGET BOTTOM HOLE)	
LATITUDE = 40°29'49.33" (40.497035)	
LONGITUDE = 106°24'26.08" (106.407244)	
NAD 27 (TARGET BOTTOM HOLE)	
LATITUDE = 40°29'49.40" (40.497054)	
LONGITUDE = 106°24'23.97" (106.406658)	
STATE PLANE NAD 83 (CO. NORTH)	
N: 1425201.16 E: 2747689.10	
STATE PLANE NAD 27 (CO. NORTH)	
N: 425198.93 E: 1747845.65	

CERTIFICATE
THIS IS TO CERTIFY THAT THE ABOVE PLAT WAS PREPARED FROM FIELD NOTES OF ACTUAL SURVEYS MADE BY ME OR UNDER MY SUPERVISION AND THAT THE SAME ARE TRUE AND CORRECT TO THE BEST OF MY KNOWLEDGE AND BELIEF.



REV: 1 05-24-19 M.D. (NAME & BHL CHANGE)

SandRidge Exploration & Production, LLC

SU SPICER 0680 2-5H8
SW 1/4 SW 1/4, SECTION 32, T7N, R80W, 6th P.M.
JACKSON COUNTY, COLORADO



UELS, LLC
Corporate Office * 85 South 200 East
Vernal, UT 84078 * (435) 789-1017

SURVEYED BY	JAMES FRESHWATER	10-15-18	SCALE
DRAWN BY	T.L.L.	10-16-18	1" = 1000'

WELL LOCATION PLAT

