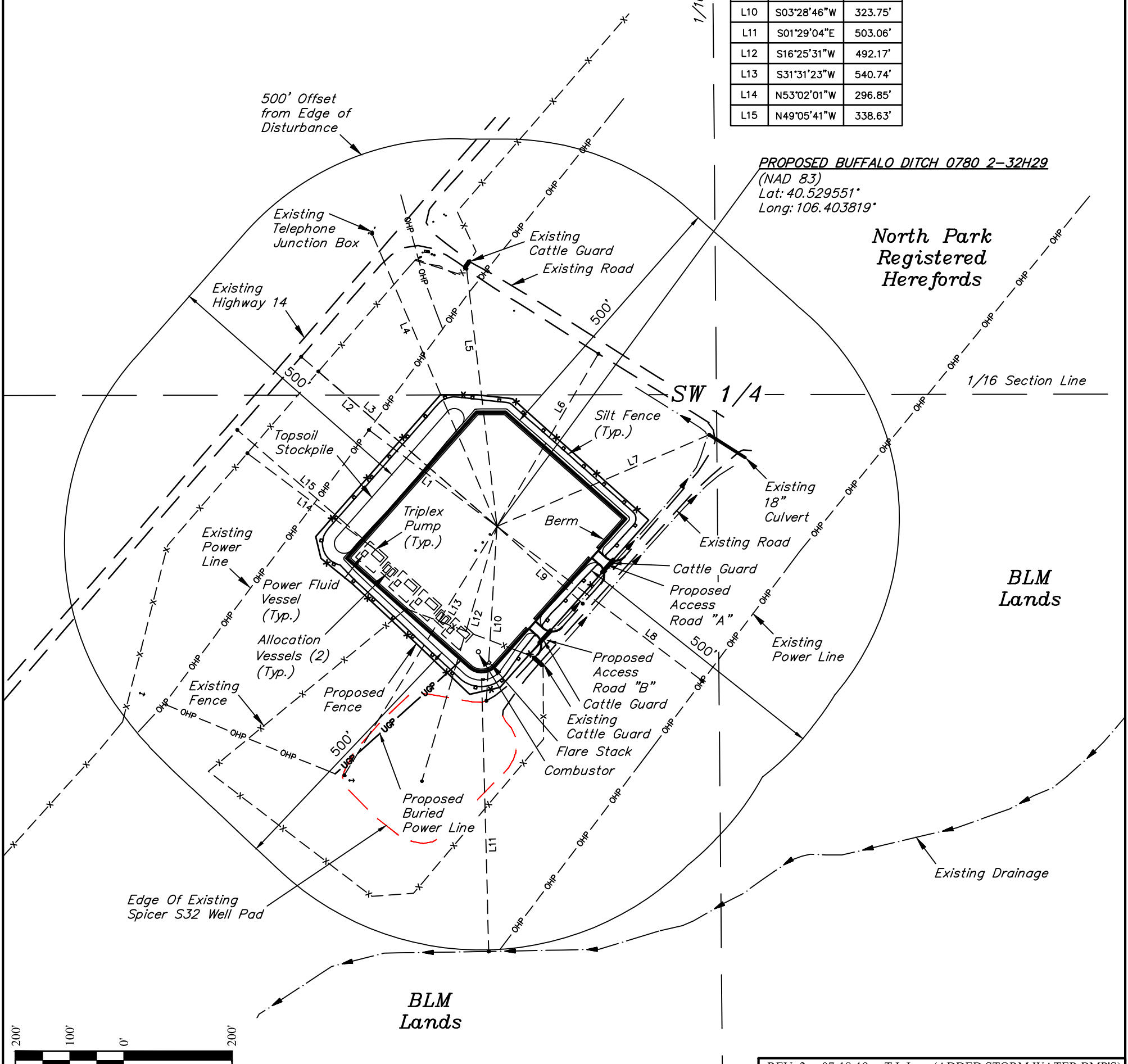


LINE TABLE		
LINE	DIRECTION	LENGTH
L1	N53°02'01"W	297.06'
L2	N49°05'41"W	480.00'
L3	N49°02'32"W	438.08'
L4	N23°05'50"W	589.80'
L5	N06°44'11"W	480.60'
L6	N30°26'31"E	371.25'
L7	N66°38'15"E	428.29'
L8	S53°02'15"E	476.36'
L9	S47°59'54"E	214.09'
L10	S03°28'46"W	323.75'
L11	S01°29'04"E	503.06'
L12	S16°25'31"W	492.17'
L13	S31°31'23"W	540.74'
L14	N53°02'01"W	296.85'
L15	N49°05'41"W	338.63'

North Park Registered Herefords

North Park Registered Herefords

PROPOSED BUFFALO DITCH 0780 2-32H29 (NAD 83)
Lat: 40.529551°
Long: 106.403819°



REV: 2 07-18-19 T.L.L. (ADDED STORM WATER BMP'S)

PLANT COMMUNITY	
<input type="checkbox"/> DISTURBED GRASSLAND	
<input type="checkbox"/> NATIVE GRASSLAND	
<input checked="" type="checkbox"/> SHRUB LAND	
<input type="checkbox"/> PLAINS RIPARIAN	
<input type="checkbox"/> MOUNTAIN RIPARIAN	
<input type="checkbox"/> FOREST LAND	
<input type="checkbox"/> WETLANDS AQUATIC	
<input type="checkbox"/> ALPINE	
<input type="checkbox"/> OTHER (Describe): _____	

CURRENT LAND USE					
CROP LAND:	<input type="checkbox"/> IRRIGATED	<input type="checkbox"/> DRY LAND	<input type="checkbox"/> IMPROVED PASTURE	<input type="checkbox"/> HAY MEADOW	<input type="checkbox"/> CRP
NON-CROP LAND:	<input checked="" type="checkbox"/> RANGELAND	<input type="checkbox"/> TIMBER	<input type="checkbox"/> RECREATIONAL	<input type="checkbox"/> OTHER (Describe) _____	
SUBDIVIDED:	<input type="checkbox"/> INDUSTRIAL	<input type="checkbox"/> COMMERCIAL	<input type="checkbox"/> RESIDENTIAL	_____	

FUTURE LAND USE					
CROP LAND:	<input type="checkbox"/> IRRIGATED	<input type="checkbox"/> DRY LAND	<input type="checkbox"/> IMPROVED PASTURE	<input type="checkbox"/> HAY MEADOW	<input type="checkbox"/> CRP
NON-CROP LAND:	<input checked="" type="checkbox"/> RANGELAND	<input type="checkbox"/> TIMBER	<input type="checkbox"/> RECREATIONAL	<input type="checkbox"/> OTHER (Describe) _____	
SUBDIVIDED:	<input type="checkbox"/> INDUSTRIAL	<input type="checkbox"/> COMMERCIAL	<input type="checkbox"/> RESIDENTIAL	_____	

SandRidge Exploration & Production, LLC

SPICER S32 ANNEX PAD
SW 1/4 SW1/4, SECTION 32, T7N, R80W, 6th P.M.
JACKSON COUNTY, COLORADO

SURVEYED BY	JAMES FRESHWATER	10-15-18	SCALE
DRAWN BY	T.L.L.	10-18-18	1" = 200'

LOCATION DRAWING FIGURE #5



UELS, LLC
Corporate Office * 85 South 200 East
Vernal, UT 84078 * (435) 789-1017

SandRidge Exploration & Production, LLC

SPICER S32 ANNEX PAD

SECTION 32, T7N, R80W, 6th P.M.

JACKSON COUNTY, COLORADO

DATE: 10-18-18 T.L.L.

REV: 1 05-24-19 M.D. (WELL NAME CHANGES)

DISTANCES FROM WELLHEAD

WELL NAME	BUILDING		BUILDING UNIT		HIGH OCCU. BUILDING		D.O.A.A.		PUBLIC ROAD (HWY 14)		ABOVE GROUND UTILITY		RAILROAD		PROPERTY LINE		CHILD CARE FACILITY		SCHOOL FACILITY		SCHOOL PROPERTY LINE	
	DIRECTION	LENGTH	DIRECTION	LENGTH	DIRECTION	LENGTH	DIRECTION	LENGTH	DIRECTION	LENGTH	DIRECTION	LENGTH	DIRECTION	LENGTH	DIRECTION	LENGTH	DIRECTION	LENGTH	DIRECTION	LENGTH	DIRECTION	LENGTH
BUFFALO DITCH 0780 2-32H29	S62°W	2657'	S58°W	3029'	OVER 1 MILE		OVER 1 MILE		N49°W	480'	N53°W	297'	OVER 1 MILE		NORTH	244'	OVER 1 MILE		OVER 1 MILE		OVER 1 MILE	
BUFFALO DITCH 0780 1-32H29	S62°W	2639'	S58°W	3010'	OVER 1 MILE		OVER 1 MILE		N49°W	480'	N53°W	295'	OVER 1 MILE		NORTH	259'	OVER 1 MILE		OVER 1 MILE		OVER 1 MILE	
SU SPICER 0680 3-5H8	S62°W	2620'	S58°W	2991'	OVER 1 MILE		OVER 1 MILE		N49°W	480'	N53°W	293'	OVER 1 MILE		NORTH	274'	OVER 1 MILE		OVER 1 MILE		OVER 1 MILE	
SU SPICER 0680 2-5H8	S63°W	2601'	S58°W	2972'	OVER 1 MILE		OVER 1 MILE		N49°W	480'	N53°W	291'	OVER 1 MILE		NORTH	289'	OVER 1 MILE		OVER 1 MILE		OVER 1 MILE	

DISTANCES FROM PRODUCTION EQUIPMENT

PRODUCTION FEATURE	BUILDING (FROM POWER FLUID VESSEL)		BUILDING UNIT (FROM POWER FLUID VESSEL)		HIGH OCCU. BUILDING		D.O.A.A.		PUBLIC ROAD (HWY 14) (FROM TRIPLEX PUMP)		ABOVE GROUND UTILITY (FROM TRIPLEX PUMP)		RAILROAD		PROPERTY LINE (FROM TRIPLEX PUMP)		CHILD CARE FACILITY		SCHOOL FACILITY		SCHOOL PROPERTY LINE	
	DIRECTION	LENGTH	DIRECTION	LENGTH	DIRECTION	LENGTH	DIRECTION	LENGTH	DIRECTION	LENGTH	DIRECTION	LENGTH	DIRECTION	LENGTH	DIRECTION	LENGTH	DIRECTION	LENGTH	DIRECTION	LENGTH	DIRECTION	LENGTH
PRODUCTION EQUIPMENT	S60°W	2412'	S56°W	2790'	OVER 1 MILE		OVER 1 MILE		N49°W	339'	N53°W	297'	OVER 1 MILE		NORTH	286'	OVER 1 MILE		OVER 1 MILE		OVER 1 MILE	