

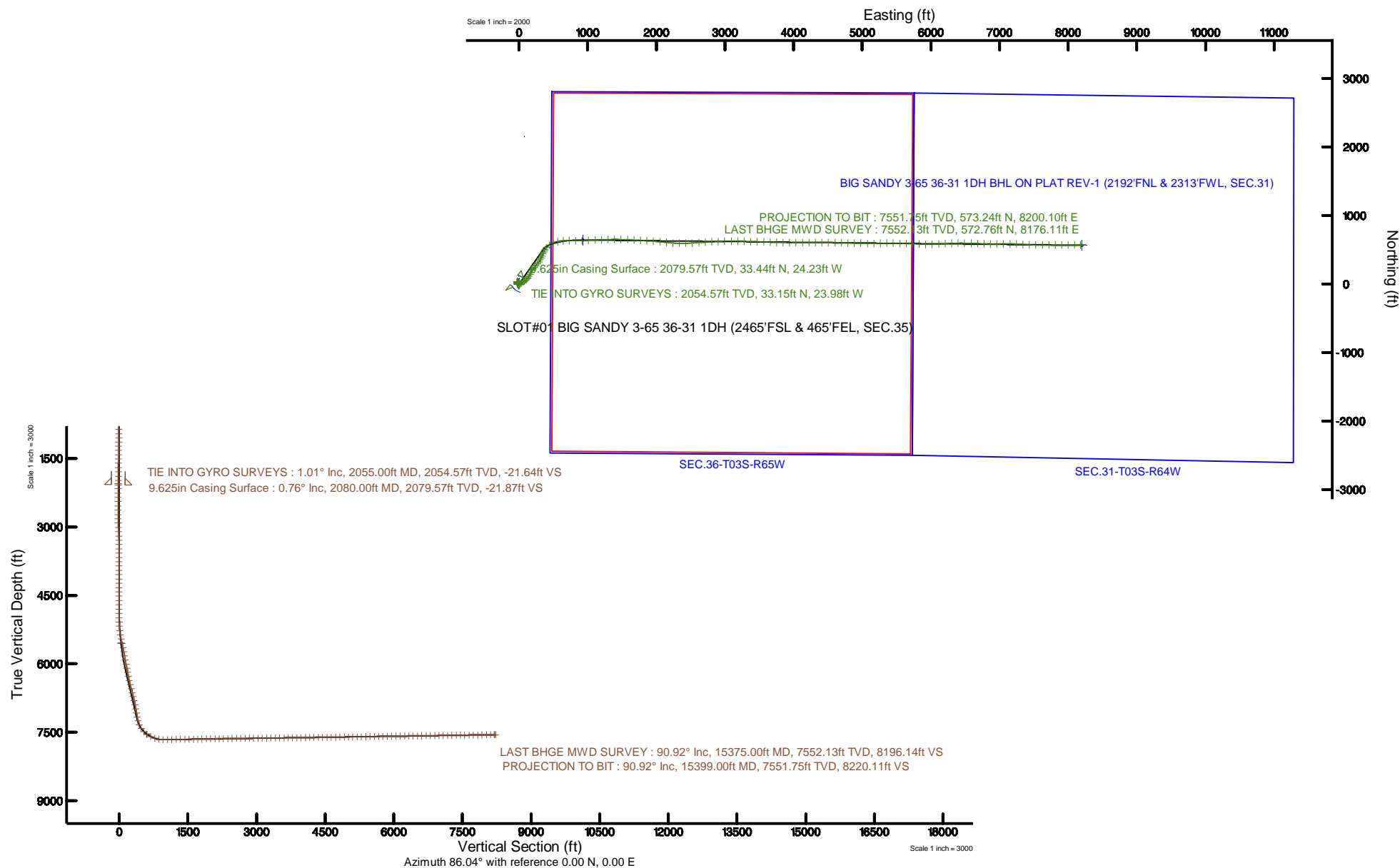
Burlington Resources

BURLINGTON
RESOURCES



Location: COLORADO Slot: SLOT#01 BIG SANDY 3-65 36-31 1DH (2465'FSL & 465'FEL, SEC.35)
Field: ADAMS COUNTY (NAD83/TN) Well: BIG SANDY 3-65 36-31 1DH
Facility: SEC.35-T03S-R65W Wellbore: BIG SANDY 3-65 36-31 1DH PWB

Plot reference wellpath is BIG SANDY 3-65 36-31 1DH (REV-A.1) FWP	Grid System: NAD83 / Lambert Colorado SP, Northern Zone (501), US feet
True vertical depths are referenced to NABORS B16 (25KB) (RKB)	North Reference: True north
Measured depths are referenced to NABORS B16 (25KB) (RKB)	Scale: True distance
NABORS B16 (25KB) (RKB) to Mean Sea Level: 5549 feet	Depths are in feet
Mean Sea Level to Mud line (At Slot: SLOT#01 BIG SANDY 3-65 36-31 1DH (2465'FSL & 465'FEL, SEC.35): 0 feet	Created by: bensjacj on 2018-04-25
Coordinates are in feet referenced to Slot	Database: WA_DEN_Denver_Deln



REFERENCE WELLPATH IDENTIFICATION

Operator	Burlington Resources	Slot	SLOT#01 BIG SANDY 3-65 36-31 1DH (2465'FSL & 465'FEL, SEC.35)
Area	COLORADO	Well	BIG SANDY 3-65 36-31 1DH
Field	ADAMS COUNTY (NAD83/TN)	Wellbore	BIG SANDY 3-65 36-31 1DH AWB
Facility	SEC.35-T03S-R65W		

REPORT SETUP INFORMATION

Projection System	NAD83 / Lambert Colorado SP, Northern Zone (501), US feet	Software System	WellArchitect® 5.1
North Reference	True	User	Bensjacj
Scale	0.999995	Report Generated	04/25/2018 at 1:53 PM
Convergence at slot	0.57° East	Database/Source file	WA_DEN_Denver_Defn/BIG_SANDY_3-65_36-31_1DH_AWP.xml

WELLPATH LOCATION

	Local coordinates		Grid coordinates		Geographic coordinates	
	North[ft]	East[ft]	Easting[US ft]	Northing[US ft]	Latitude	Longitude
Slot Location	-119.40	-0.78	3246465.43	1151750.68	39°44'47.680"N	104°37'24.570"W
Facility Reference Pt			3246465.03	1151870.08	39°44'48.860"N	104°37'24.560"W
Field Reference Pt			3257309.99	1164230.85	39°46'49.930"N	104°35'04.090"W

WELLPATH DATUM

Calculation method	Minimum curvature	NABORS B16 (25'KB) (RKB) to Facility Vertical Datum	5549.00ft
Horizontal Reference Pt	Slot	NABORS B16 (25'KB) (RKB) to Mean Sea Level	5549.00ft
Vertical Reference Pt	NABORS B16 (25'KB) (RKB)	NABORS B16 (25'KB) (RKB) to Mud Line at Slot (SLOT#01 BIG SANDY 3-65 36-31 1DH (2465'FSL & 465'FEL, SEC.35))	5549.00ft
MD Reference Pt	NABORS B16 (25'KB) (RKB)	Section Origin	N 0.00, E 0.00 ft
Field Vertical Reference	Mean Sea Level	Section Azimuth	86.04°

REFERENCE WELLPATH IDENTIFICATION			
Operator	Burlington Resources	Slot	SLOT#01 BIG SANDY 3-65 36-31 1DH (2465'FSL & 465'FEL, SEC.35)
Area	COLORADO	Well	BIG SANDY 3-65 36-31 1DH
Field	ADAMS COUNTY (NAD83/TN)	Wellbore	BIG SANDY 3-65 36-31 1DH AWB
Facility	SEC.35-T03S-R65W		

WELLPATH DATA (143 stations)								
MD [ft]	Inclination [°]	Azimuth [°]	TVD [ft]	Vert Sect [ft]	North [ft]	East [ft]	DLS [°/100ft]	Comments
2055.00	1.010	322.670	2054.57	-21.64	33.15	-23.98	0.09	TIE INTO GYRO SURVEYS
2164.00	0.440	219.260	2163.57	-22.45	33.59	-24.83	1.09	
2259.00	0.280	255.410	2258.57	-22.93	33.25	-25.28	0.28	
2353.00	0.240	157.230	2352.56	-23.09	33.01	-25.43	0.42	
2447.00	1.170	179.250	2446.56	-23.08	31.87	-25.34	1.01	
2541.00	1.920	181.480	2540.52	-23.29	29.33	-25.37	0.80	
2636.00	2.900	179.910	2635.44	-23.60	25.34	-25.41	1.03	
2730.00	3.810	175.580	2729.27	-23.73	19.85	-25.16	1.00	
2824.00	4.410	169.170	2823.03	-23.28	13.18	-24.24	0.80	
2918.00	4.680	157.160	2916.74	-21.60	6.10	-22.08	1.05	
3012.00	4.660	144.230	3010.43	-18.35	-0.53	-18.35	1.12	
3107.00	3.520	111.760	3105.20	-13.68	-4.75	-13.39	2.67	
3202.00	2.780	61.500	3200.07	-8.96	-4.73	-8.66	2.90	
3295.00	1.460	64.020	3293.01	-5.81	-3.13	-5.61	1.42	
3389.00	0.280	329.260	3387.00	-4.80	-2.41	-4.65	1.61	
3483.00	0.300	26.550	3480.99	-4.78	-1.99	-4.66	0.30	
3577.00	0.600	180.810	3574.99	-4.70	-2.26	-4.55	0.94	
3672.00	0.220	269.930	3669.99	-4.92	-2.76	-4.74	0.67	
3766.00	0.130	228.690	3763.99	-5.19	-2.83	-5.00	0.16	
3860.00	0.370	95.000	3857.99	-4.97	-2.93	-4.78	0.50	
3955.00	0.830	167.580	3952.99	-4.57	-3.63	-4.33	0.84	
4049.00	0.910	353.690	4046.98	-4.50	-3.55	-4.26	1.85	
4143.00	0.990	130.170	4140.98	-3.95	-3.33	-3.72	1.88	
4238.00	0.650	281.210	4235.97	-3.88	-3.76	-3.63	1.67	
4332.00	1.330	80.770	4329.97	-3.30	-3.48	-3.07	2.08	
4426.00	1.500	323.600	4423.95	-2.88	-2.31	-2.73	2.57	
4521.00	1.950	218.270	4518.93	-4.63	-2.58	-4.46	2.90	
4615.00	1.250	115.900	4612.90	-4.82	-4.29	-4.53	2.69	
4709.00	1.300	273.270	4706.89	-4.99	-4.67	-4.68	2.66	
4803.00	1.020	112.760	4800.89	-5.30	-4.94	-4.97	2.43	
4897.00	0.170	165.870	4894.88	-4.52	-5.39	-4.16	0.99	
4992.00	0.680	152.300	4989.88	-4.27	-6.03	-3.87	0.54	
5086.00	2.530	102.640	5083.84	-2.06	-6.98	-1.58	2.29	
5181.00	4.690	64.210	5178.66	3.56	-5.75	3.96	3.30	
5275.00	7.720	52.380	5272.10	12.38	-0.22	12.43	3.48	
5370.00	10.650	53.370	5365.87	25.08	8.91	24.53	3.09	
5464.00	12.270	59.870	5458.00	41.36	19.11	40.14	2.20	
5559.00	13.970	59.040	5550.52	60.64	30.08	58.70	1.80	
5653.00	14.280	53.880	5641.68	80.56	42.75	77.80	1.38	
5748.00	13.340	47.840	5733.94	99.09	57.01	95.39	1.81	
5843.00	13.500	44.090	5826.34	115.95	72.34	111.23	0.93	
5937.00	15.030	37.880	5917.45	132.24	89.84	126.35	2.30	
6032.00	18.240	33.570	6008.46	149.52	111.96	142.14	3.62	
6126.00	21.620	28.790	6096.83	167.85	139.40	158.62	3.99	
6221.00	20.100	19.590	6185.62	183.85	170.13	172.52	3.80	

REFERENCE WELLPATH IDENTIFICATION			
Operator	Burlington Resources	Slot	SLOT#01 BIG SANDY 3-65 36-31 1DH (2465'FSL & 465'FEL, SEC.35)
Area	COLORADO	Well	BIG SANDY 3-65 36-31 1DH
Field	ADAMS COUNTY (NAD83/TN)	Wellbore	BIG SANDY 3-65 36-31 1DH AWB
Facility	SEC.35-T03S-R65W		

WELLPATH DATA (143 stations)								
MD [ft]	Inclination [°]	Azimuth [°]	TVD [ft]	Vert Sect [ft]	North [ft]	East [ft]	DLS [°/100ft]	Comments
6315.00	18.590	27.950	6274.33	198.22	198.59	184.97	3.35	
6410.00	17.830	40.680	6364.61	216.45	223.00	201.55	4.25	
6503.00	19.250	47.730	6452.79	238.49	244.12	222.18	2.85	
6598.00	20.470	39.840	6542.15	262.28	267.41	244.41	3.10	
6693.00	21.510	34.590	6630.86	284.63	294.50	264.95	2.26	
6787.00	21.970	34.410	6718.17	306.28	323.20	284.67	0.49	
6882.00	20.760	29.570	6806.65	326.61	352.51	303.02	2.25	
6977.00	20.500	26.860	6895.56	344.43	381.99	318.84	1.04	
7071.00	20.530	26.280	6983.60	361.16	411.45	333.58	0.22	
7166.00	20.830	24.040	7072.48	377.48	441.82	347.84	0.89	
7260.00	19.720	25.090	7160.65	393.03	471.44	361.37	1.24	
7355.00	21.680	30.460	7249.52	410.73	501.09	377.06	2.87	
7450.00	30.120	41.250	7334.95	437.62	534.22	401.73	10.14	
7544.00	38.030	56.970	7412.90	479.82	567.85	441.70	12.54	
7639.00	46.610	67.090	7483.16	538.22	597.33	498.20	11.51	
7733.00	55.730	75.320	7542.10	608.90	620.54	567.45	11.85	
7828.00	60.980	85.770	7592.02	689.22	633.59	647.06	10.86	
7922.00	70.740	91.900	7630.45	774.74	635.15	732.67	11.96	
8017.00	81.160	90.530	7653.48	866.39	633.23	824.68	11.06	
8111.00	90.950	87.870	7659.94	959.91	634.55	918.33	10.79	
8206.00	91.020	87.270	7658.31	1054.86	638.57	1013.23	0.64	
8301.00	91.080	87.140	7656.57	1149.82	643.20	1108.10	0.15	
8395.00	90.920	87.500	7654.93	1243.78	647.60	1201.98	0.42	
8490.00	90.950	88.710	7653.38	1338.71	650.74	1296.91	1.27	
8584.00	90.920	89.660	7651.84	1432.55	652.08	1390.89	1.01	
8679.00	90.890	91.320	7650.34	1527.25	651.26	1485.87	1.75	
8773.00	90.860	90.990	7648.91	1620.87	649.37	1579.84	0.35	
8868.00	90.650	94.500	7647.65	1715.20	644.82	1674.71	3.70	
8963.00	91.050	94.310	7646.25	1809.18	637.53	1769.42	0.47	
9057.00	91.110	93.040	7644.47	1902.33	631.50	1863.21	1.35	
9152.00	91.050	93.500	7642.68	1996.55	626.08	1958.03	0.49	
9247.00	90.890	96.080	7641.07	2090.43	618.15	2052.68	2.72	
9341.00	90.830	95.660	7639.66	2183.04	608.54	2146.18	0.45	
9436.00	90.800	94.230	7638.31	2276.88	600.35	2240.81	1.51	
9530.00	90.830	91.380	7636.97	2370.21	595.75	2334.68	3.03	
9625.00	90.740	88.570	7635.67	2464.97	595.79	2429.66	2.96	
9720.00	90.890	85.680	7634.32	2559.93	600.56	2524.52	3.05	
9814.00	90.680	86.700	7633.03	2653.92	606.80	2618.30	1.11	
9909.00	90.830	86.980	7631.78	2748.90	612.04	2713.15	0.33	
10003.00	90.770	87.360	7630.47	2842.88	616.68	2807.03	0.41	
10098.00	90.740	87.030	7629.22	2937.85	621.33	2901.90	0.35	
10192.00	90.740	88.170	7628.00	3031.81	625.27	2995.81	1.21	
10287.00	90.680	89.110	7626.83	3126.70	627.52	3090.78	0.99	
10381.00	90.460	90.560	7625.89	3220.49	627.79	3184.77	1.56	
10476.00	90.710	93.410	7624.92	3314.96	624.50	3279.70	3.01	

REFERENCE WELLPATH IDENTIFICATION			
Operator	Burlington Resources	Slot	SLOT#01 BIG SANDY 3-65 36-31 1DH (2465'FSL & 465'FEL, SEC.35)
Area	COLORADO	Well	BIG SANDY 3-65 36-31 1DH
Field	ADAMS COUNTY (NAD83/TN)	Wellbore	BIG SANDY 3-65 36-31 1DH AWB
Facility	SEC.35-T03S-R65W		

WELLPATH DATA (143 stations)								
MD [ft]	Inclination [°]	Azimuth [°]	TVD [ft]	Vert Sect [ft]	North [ft]	East [ft]	DLS [°/100ft]	Comments
10571.00	90.740	90.810	7623.72	3409.41	621.00	3374.62	2.74	
10665.00	90.650	91.800	7622.58	3503.01	618.86	3468.59	1.06	
10760.00	90.650	91.890	7621.50	3597.52	615.80	3563.53	0.09	
10854.00	90.770	92.480	7620.34	3690.97	612.22	3657.45	0.64	
10949.00	90.650	91.970	7619.16	3785.41	608.53	3752.38	0.55	
11043.00	90.770	91.220	7617.99	3878.96	605.92	3846.33	0.81	
11138.00	90.650	89.830	7616.82	3973.66	605.05	3941.32	1.47	
11232.00	91.050	89.370	7615.42	4067.47	605.70	4035.30	0.65	
11327.00	90.980	89.590	7613.74	4162.29	606.56	4130.29	0.24	
11421.00	90.620	89.810	7612.43	4256.09	607.06	4224.27	0.45	
11515.00	90.950	90.470	7611.14	4349.84	606.83	4318.27	0.78	
11610.00	90.890	89.100	7609.61	4444.62	607.18	4413.25	1.44	
11704.00	90.950	90.710	7608.10	4538.39	607.34	4507.23	1.71	
11799.00	90.890	91.480	7606.58	4633.01	605.52	4602.20	0.81	
11894.00	90.770	91.770	7605.20	4727.55	602.83	4697.16	0.33	
11988.00	90.830	91.390	7603.89	4821.10	600.24	4791.11	0.41	
12083.00	90.980	90.860	7602.39	4915.72	598.37	4886.08	0.58	
12177.00	90.860	91.250	7600.88	5009.34	596.64	4980.05	0.43	
12272.00	90.890	91.410	7599.43	5103.93	594.44	5075.02	0.17	
12366.00	90.990	89.600	7597.89	5197.63	593.61	5169.00	1.93	
12460.00	90.680	88.150	7596.52	5291.50	595.46	5262.96	1.58	
12555.00	90.710	90.240	7595.37	5386.35	596.79	5357.94	2.20	
12649.00	90.920	91.090	7594.03	5480.03	595.70	5451.93	0.93	
12744.00	90.950	90.540	7592.48	5574.69	594.35	5546.90	0.58	
12838.00	90.830	91.710	7591.02	5668.31	592.50	5640.87	1.25	
12932.00	90.860	92.590	7589.63	5761.76	588.98	5734.79	0.94	
13027.00	91.050	93.270	7588.05	5856.06	584.12	5829.66	0.74	
13121.00	91.020	91.510	7586.35	5949.47	580.20	5923.56	1.87	
13216.00	90.950	88.540	7584.72	6044.21	580.16	6018.53	3.13	
13310.00	90.860	86.600	7583.23	6138.16	584.15	6112.43	2.07	
13405.00	90.860	86.650	7581.81	6233.15	589.74	6207.26	0.05	
13500.00	90.890	87.070	7580.35	6328.13	594.94	6302.10	0.44	
13594.00	90.860	88.900	7578.92	6422.06	598.25	6396.03	1.95	
13689.00	90.950	91.570	7577.42	6516.79	597.86	6491.01	2.81	
13783.00	90.890	91.550	7575.91	6610.34	595.30	6584.96	0.07	
13878.00	90.800	91.780	7574.51	6704.87	592.54	6679.91	0.26	
13972.00	90.860	92.670	7573.15	6798.31	588.89	6773.83	0.95	
14067.00	90.890	92.190	7571.70	6892.71	584.86	6868.73	0.51	
14161.00	90.920	88.700	7570.21	6986.41	584.13	6962.70	3.71	
14255.00	90.920	88.220	7568.70	7080.31	586.66	7056.66	0.51	
14350.00	90.770	90.980	7567.30	7175.11	587.32	7151.63	2.91	
14444.00	90.710	93.180	7566.09	7268.58	583.91	7245.56	2.34	
14539.00	90.860	93.060	7564.78	7362.84	578.74	7340.41	0.20	
14633.00	90.890	92.210	7563.35	7456.21	574.42	7434.30	0.90	
14727.00	90.770	90.990	7561.99	7549.76	571.79	7528.25	1.30	

REFERENCE WELLPATH IDENTIFICATION			
Operator	Burlington Resources	Slot	SLOT#01 BIG SANDY 3-65 36-31 1DH (2465'FSL & 465'FEL, SEC.35)
Area	COLORADO	Well	BIG SANDY 3-65 36-31 1DH
Field	ADAMS COUNTY (NAD83/TN)	Wellbore	BIG SANDY 3-65 36-31 1DH AWB
Facility	SEC.35-T03S-R65W		

WELLPATH DATA (143 stations)								
MD [ft]	Inclination [°]	Azimuth [°]	TVD [ft]	Vert Sect [ft]	North [ft]	East [ft]	DLS [°/100ft]	Comments
14822.00	90.890	89.960	7560.61	7644.46	571.01	7623.23	1.09	
14916.00	90.800	89.480	7559.22	7738.26	571.47	7717.22	0.52	
15010.00	90.950	90.470	7557.79	7832.03	571.51	7811.21	1.07	
15105.00	90.860	91.490	7556.29	7926.66	569.88	7906.18	1.08	
15199.00	90.980	89.180	7554.78	8020.38	569.33	8000.16	2.46	
15294.00	90.770	88.740	7553.33	8115.25	571.06	8095.14	0.51	
15375.00	90.920	88.850	7552.13	8196.14	572.76	8176.11	0.23	LAST BHGE MWD SURVEY
15399.00	90.920	88.850	7551.75	8220.11	573.24	8200.10	0.00	PROJECTION TO BIT

HOLE & CASING SECTIONS - Ref Wellbore: BIG SANDY 3-65 36-31 1DH AWB Ref Wellpath: BIG SANDY 3-65 36-31 1DH AWP										
String/Diameter	Start MD [ft]	End MD [ft]	Interval [ft]	Start TVD [ft]	End TVD [ft]	Start N/S [ft]	Start E/W [ft]	End N/S [ft]	End E/W [ft]	
9.625in Casing Surface	25.00	2080.00	2055.00	25.00	2079.57	0.00	0.00	33.44	-24.23	
8.5in Open Hole	2080.00	15399.00	13319.00	2079.57	7551.75	33.44	-24.23	573.24	8200.10	

TARGETS								
Name	TVD [ft]	North [ft]	East [ft]	Grid East [US ft]	Grid North [US ft]	Latitude	Longitude	Shape
SEC.31-T05S-R64W	0.00	0.00	0.00	3246465.43	1151750.68	39°44'47.680"N	104°37'24.570"W	polygon
SEC.36-T05S-R64W	0.00	0.00	0.00	3246465.43	1151750.68	39°44'47.680"N	104°37'24.570"W	polygon
BIG SANDY 3-65 36-31 1DH BHL ON PLAT REV-1 (2192'FNL & 2313'FWL, SEC.31)	7552.00	566.98	8200.60	3254659.96	1152398.68	39°44'53.270"N	104°35'39.580"W	point
BIG SANDY 3-65 36-31 1DH BPI ON PLAT REV-1 (2167'FNL & 460'FWL, SEC.36)	7660.00	643.56	928.71	3247387.72	1152403.38	39°44'54.040"N	104°37'12.680"W	point

WELLPATH COMPOSITION - Ref Wellbore: BIG SANDY 3-65 36-31 1DH AWB Ref Wellpath: BIG SANDY 3-65 36-31 1DH AWP					
Start MD [ft]	End MD [ft]	Positional Uncertainty Model	Log Name/Comment	Wellbore	
25.00	2055.00	Gyrodata standard - Drop gyro or Multi-shot	GYRODATA SURFACE SURVEYS <25 - 2055>	BIG SANDY 3-65 36-31 1DH AWB	
2055.00	15375.00	BHI AutoTrak Curve (IFR1, Short)	BHI AUTOTRAK CURVE 8 1/2" (IFR1, SHORT) <2055 - 15375>	BIG SANDY 3-65 36-31 1DH AWB	
15375.00	15399.00	Blind Drilling (std)	Projection to bit	BIG SANDY 3-65 36-31 1DH AWB	

REFERENCE WELLPATH IDENTIFICATION				
Operator	Burlington Resources	Slot	SLOT#01 BIG SANDY 3-65 36-31 1DH (2465'FSL & 465'FEL, SEC.35)	
Area	COLORADO	Well	BIG SANDY 3-65 36-31 1DH	
Field	ADAMS COUNTY (NAD83/TN)	Wellbore	BIG SANDY 3-65 36-31 1DH AWB	
Facility	SEC.35-T03S-R65W			

WELLPATH COMMENTS				
MD [ft]	Inclination [°]	Azimuth [°]	TVD [ft]	Comment
2055.00	1.010	322.670	2054.57	TIE INTO GYRO SURVEYS
15375.00	90.920	88.850	7552.13	LAST BHGE MWD SURVEY
15399.00	90.920	88.850	7551.75	PROJECTION TO BIT