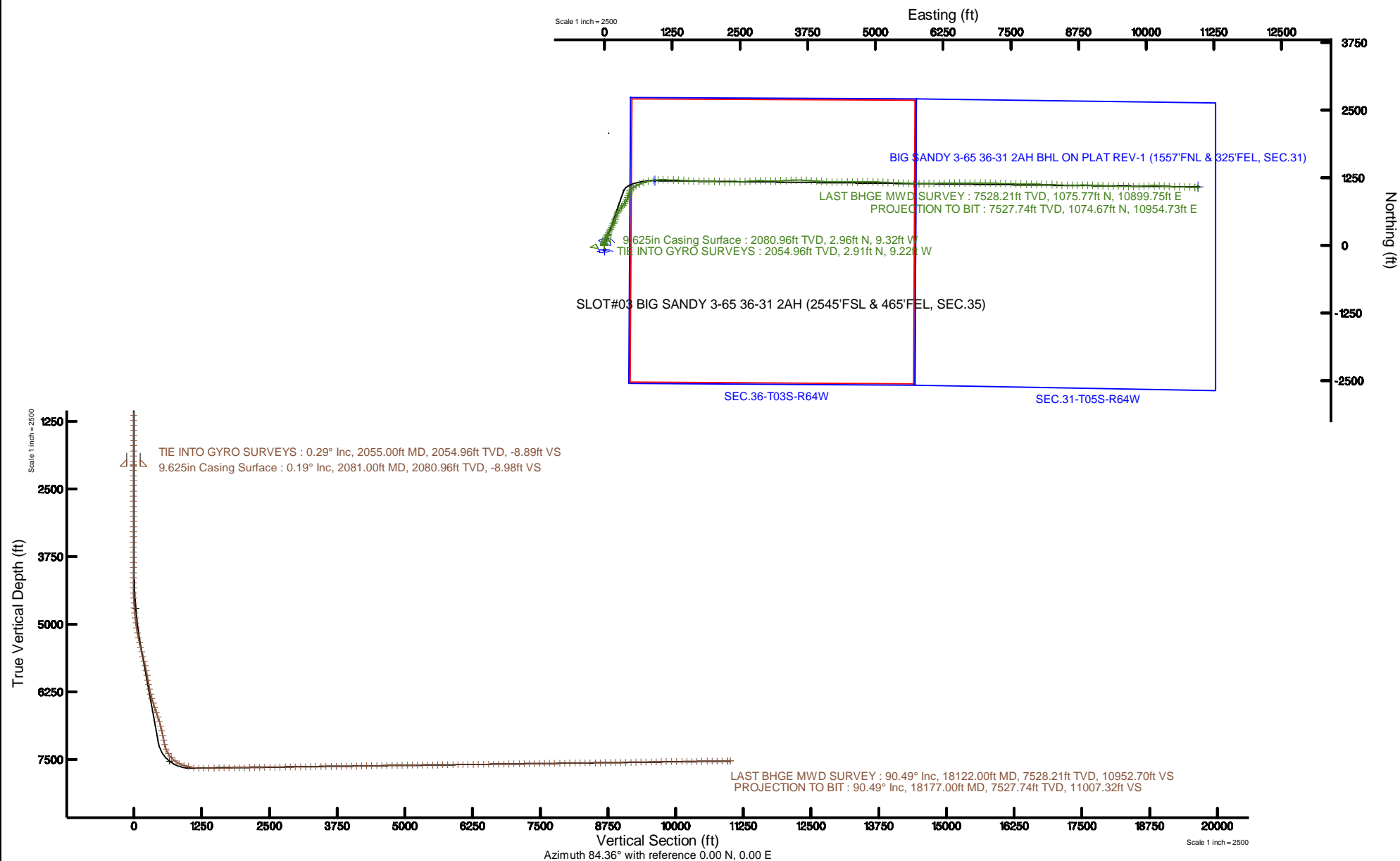


Location:	COLORADO	Slot:	SLOT#03 BIG SANDY 3-65 36-31 2AH (2545'FSL & 465'FEL, SEC.35)
Field:	ADAMS COUNTY (NAD83/TN)	Well:	BIG SANDY 3-65 36-31 2AH
Facility:	SEC.35-T03S-R65W	Wellbore:	BIG SANDY 3-65 36-31 2AH PWB

Location:	COLORADO	Slot:	SLOT#03 BIG SANDY 3-65 36-31 2AH (2545'FSL & 465'FEL, SEC.35)
Field:	ADAMS COUNTY (NAD83/TN)	Well:	BIG SANDY 3-65 36-31 2AH
Facility:	SEC.35-T03S-R65W	Wellbore:	BIG SANDY 3-65 36-31 2AH PWB

Plot reference wellpath is BIG SANDY 3-65 36-31 2AH (REV-A-1) PWP	Grid System: NAD83 / Lambert Colorado SP, Northern Zone (501), US feet
True vertical depths are referenced to NABORS B16 (25KB) (RKB)	North Reference: True north
Measured depths are referenced to NABORS B16 (25KB) (RKB)	Scale: True distance
NABORS B16 (25KB) (RKB) to Mean Sea Level: 5543 feet	Depths are in feet
Mean Sea Level to Mud line (At Slot: SLOTR03 BIG SANDY 3-65 36-31 2AH (2545FSL & 465FEL, SEC.35): 0 feet	Created by: bensjag on 2018-03-29
Coordinates are in feet referenced to Slot	Database: WA_DEN_Denver_Dein

BURLINGTON
RESOURCES



REFERENCE WELLPATH IDENTIFICATION			
Operator	Burlington Resources	Slot	SLOT#03 BIG SANDY 3-65 36-31 2AH (2545'FSL & 465'FEL, SEC.35)
Area	COLORADO	Well	BIG SANDY 3-65 36-31 2AH
Field	ADAMS COUNTY (NAD83/TN)	Wellbore	BIG SANDY 3-65 36-31 2AH AWP
Facility	SEC.35-T03S-R65W		

REPORT SETUP INFORMATION			
Projection System	NAD83 / Lambert Colorado SP, Northern Zone (501), US feet	Software System	WellArchitect® 5.1
North Reference	True	User	Bensjacj
Scale	0.999995	Report Generated	03/29/2018 at 9:28 AM
Convergence at slot	0.57° East	Database/Source file	WA_DEN_Denver_Defn/BIG_SANDY_3-65_36-31_2AH_AWP.xml

WELLPATH LOCATION						
	Local coordinates		Grid coordinates		Geographic coordinates	
	North[ft]	East[ft]	Easting[US ft]	Northing[US ft]	Latitude	Longitude
Slot Location	-39.46	0.00	3246465.42	1151830.62	39°44'48.470"N	104°37'24.560"W
Facility Reference Pt			3246465.03	1151870.08	39°44'48.860"N	104°37'24.560"W
Field Reference Pt			3257309.99	1164230.85	39°46'49.930"N	104°35'04.090"W

WELLPATH DATUM			
Calculation method	Minimum curvature	NABORS B16 (25'KB) (RKB) to Facility Vertical Datum	5549.00ft
Horizontal Reference Pt	Slot	NABORS B16 (25'KB) (RKB) to Mean Sea Level	5549.00ft
Vertical Reference Pt	NABORS B16 (25'KB) (RKB)	NABORS B16 (25'KB) (RKB) to Mud Line at Slot (SLOT#03 BIG SANDY 3-65 36-31 2AH (2545'FSL & 465'FEL, SEC.35))	5549.00ft
MD Reference Pt	NABORS B16 (25'KB) (RKB)	Section Origin	N 0.00, E 0.00 ft
Field Vertical Reference	Mean Sea Level	Section Azimuth	84.36°

REFERENCE WELLPATH IDENTIFICATION			
Operator	Burlington Resources	Slot	SLOT#03 BIG SANDY 3-65 36-31 2AH (2545'FSL & 465'FEL, SEC.35)
Area	COLORADO	Well	BIG SANDY 3-65 36-31 2AH
Field	ADAMS COUNTY (NAD83/TN)	Wellbore	BIG SANDY 3-65 36-31 2AH AWP
Facility	SEC.35-T03S-R65W		

WELLPATH DATA (172 stations)

MD [ft]	Inclination [°]	Azimuth [°]	TVD [ft]	Vert Sect [ft]	North [ft]	East [ft]	DLS [°/100ft]	Comments
2055.00	0.290	296.340	2054.96	-8.89	2.91	-9.22	0.14	TIE INTO GYRO SURVEYS
2160.00	0.150	73.490	2159.96	-8.98	3.07	-9.33	0.39	
2254.00	0.040	194.220	2253.96	-8.87	3.07	-9.22	0.18	
2349.00	0.030	292.920	2348.96	-8.90	3.05	-9.25	0.06	
2443.00	0.090	277.500	2442.96	-9.00	3.07	-9.34	0.07	
2537.00	0.040	58.550	2536.96	-9.04	3.09	-9.39	0.13	
2631.00	0.040	140.400	2630.96	-8.99	3.08	-9.34	0.06	
2725.00	0.070	168.550	2724.96	-8.97	3.00	-9.31	0.04	
2820.00	0.030	57.130	2819.96	-8.94	2.96	-9.28	0.09	
2914.00	0.030	330.260	2913.96	-8.93	2.99	-9.27	0.04	
3008.00	0.040	269.530	3007.96	-8.97	3.02	-9.31	0.04	
3102.00	0.030	156.910	3101.96	-9.00	2.99	-9.33	0.06	
3196.00	0.070	74.300	3195.96	-8.93	2.99	-9.27	0.08	
3290.00	0.030	289.140	3289.96	-8.90	3.01	-9.24	0.10	
3385.00	0.100	2.120	3384.96	-8.91	3.10	-9.26	0.10	
3479.00	0.200	261.410	3478.96	-9.06	3.16	-9.42	0.25	
3573.00	0.250	13.500	3572.96	-9.16	3.33	-9.53	0.40	
3667.00	0.100	194.090	3666.96	-9.12	3.45	-9.50	0.37	
3762.00	0.130	169.310	3761.96	-9.14	3.27	-9.50	0.06	
3856.00	0.140	269.230	3855.96	-9.24	3.16	-9.60	0.22	
3950.00	0.130	268.830	3949.96	-9.46	3.16	-9.82	0.01	
4045.00	1.600	356.860	4044.95	-9.51	4.48	-10.00	1.69	
4139.00	2.920	349.150	4138.87	-9.67	8.14	-10.52	1.44	
4234.00	4.280	353.310	4233.68	-9.96	14.04	-11.39	1.46	
4328.00	5.930	358.700	4327.31	-9.65	22.38	-11.91	1.83	
4422.00	7.360	8.380	4420.68	-7.83	33.19	-11.14	1.93	
4516.00	8.360	13.870	4513.79	-4.08	45.78	-8.63	1.33	
4611.00	9.080	14.600	4607.69	0.82	59.74	-5.08	0.77	
4705.00	10.160	15.220	4700.37	6.34	74.92	-1.04	1.15	
4799.00	12.240	20.200	4792.58	13.64	92.27	4.58	2.44	
4893.00	14.480	21.930	4884.03	23.42	112.53	12.41	2.42	
4987.00	14.850	23.520	4974.97	34.73	134.47	21.61	0.58	
5082.00	16.680	26.090	5066.39	47.84	157.88	32.46	2.06	
5177.00	18.510	28.840	5156.94	63.55	183.34	45.73	2.12	
5271.00	20.020	28.070	5245.68	80.93	210.61	60.50	1.63	
5365.00	21.740	28.030	5333.50	99.51	240.18	76.26	1.83	
5460.00	23.190	30.110	5421.29	120.20	271.89	93.91	1.74	
5554.00	23.530	29.050	5507.59	141.69	304.30	112.31	0.58	
5649.00	23.210	27.050	5594.79	162.60	337.55	130.03	0.90	
5744.00	23.350	29.370	5682.06	183.51	370.63	147.77	0.98	
5838.00	23.570	28.160	5768.29	204.66	403.44	165.78	0.56	
5933.00	23.380	22.020	5855.44	223.98	437.66	181.81	2.58	
6027.00	23.660	18.280	5941.64	240.29	472.86	194.72	1.62	
6122.00	23.630	15.930	6028.66	255.02	509.27	205.93	0.99	
6216.00	23.900	17.620	6114.69	269.47	545.54	216.86	0.78	

REFERENCE WELLPATH IDENTIFICATION			
Operator	Burlington Resources	Slot	SLOT#03 BIG SANDY 3-65 36-31 2AH (2545'FSL & 465'FEL, SEC.35)
Area	COLORADO	Well	BIG SANDY 3-65 36-31 2AH
Field	ADAMS COUNTY (NAD83/TN)	Wellbore	BIG SANDY 3-65 36-31 2AH AWB
Facility	SEC.35-T03S-R65W		

WELLPATH DATA (172 stations)								
MD [ft]	Inclination [°]	Azimuth [°]	TVD [ft]	Vert Sect [ft]	North [ft]	East [ft]	DLS [°/100ft]	Comments
6311.00	23.490	24.960	6201.70	286.72	581.05	230.68	3.13	
6405.00	23.700	30.220	6287.86	307.32	614.36	248.10	2.25	
6499.00	24.220	34.830	6373.76	330.91	646.52	268.62	2.07	
6594.00	25.120	38.030	6460.09	357.49	678.40	292.17	1.70	
6688.00	25.960	36.920	6544.91	385.18	710.56	316.83	1.03	
6783.00	25.130	38.370	6630.62	413.26	743.00	341.84	1.09	
6878.00	26.040	38.130	6716.31	441.71	775.22	367.23	0.96	
6973.00	26.830	34.110	6801.38	469.85	809.38	392.14	2.06	
7067.00	26.900	19.380	6885.33	492.43	847.04	411.11	7.07	
7162.00	26.720	22.290	6970.12	511.53	887.08	426.34	1.39	
7256.00	26.760	22.260	7054.07	531.33	926.22	442.37	0.04	
7351.00	26.740	19.610	7138.90	550.46	966.14	457.65	1.26	
7445.00	26.750	17.570	7222.85	567.82	1006.23	471.13	0.98	
7540.00	26.240	44.070	7308.17	592.36	1041.83	492.27	12.37	
7634.00	34.830	56.620	7389.14	632.08	1071.62	529.24	11.34	
7729.00	44.780	61.050	7462.05	686.97	1102.82	581.32	10.89	
7824.00	54.410	66.020	7523.57	754.55	1134.80	646.06	10.89	
7918.00	63.800	71.770	7571.81	832.21	1163.61	721.25	11.28	
8013.00	73.660	77.800	7606.26	919.38	1186.65	806.56	11.94	
8107.00	75.950	81.310	7630.91	1009.75	1203.08	895.76	4.35	
8202.00	79.600	86.140	7651.03	1102.55	1213.20	988.00	6.28	
8296.00	89.020	91.310	7660.35	1195.67	1215.24	1081.38	11.42	
8391.00	90.490	91.880	7660.75	1289.91	1212.59	1176.34	1.66	
8486.00	90.800	91.970	7659.68	1384.08	1209.40	1271.28	0.34	
8580.00	90.770	92.590	7658.39	1477.17	1205.66	1365.20	0.66	
8675.00	90.800	92.750	7657.09	1571.16	1201.24	1460.08	0.17	
8769.00	90.740	93.060	7655.83	1664.11	1196.48	1553.95	0.34	
8864.00	90.710	92.340	7654.63	1758.09	1192.00	1648.84	0.76	
8959.00	90.770	91.970	7653.40	1852.21	1188.43	1743.77	0.39	
9053.00	90.650	91.140	7652.24	1945.46	1185.88	1837.72	0.89	
9148.00	90.860	91.270	7650.98	2039.77	1183.88	1932.69	0.26	
9243.00	90.990	91.540	7649.45	2134.04	1181.55	2027.65	0.32	
9337.00	90.710	92.350	7648.06	2227.21	1178.36	2121.59	0.91	
9432.00	90.800	91.580	7646.80	2321.36	1175.10	2216.52	0.82	
9526.00	90.950	89.720	7645.37	2414.78	1174.04	2310.50	1.98	
9621.00	90.710	89.830	7643.99	2509.34	1174.41	2405.49	0.28	
9716.00	90.800	88.260	7642.74	2604.01	1175.99	2500.47	1.66	
9810.00	90.950	84.490	7641.30	2697.93	1181.94	2594.25	4.01	
9905.00	90.920	84.730	7639.75	2792.91	1190.86	2688.82	0.25	
9999.00	90.920	87.870	7638.24	2886.84	1196.92	2782.60	3.34	
10094.00	90.890	91.230	7636.74	2981.42	1197.67	2877.57	3.54	
10188.00	90.990	91.580	7635.20	3074.70	1195.36	2971.53	0.39	
10283.00	90.710	91.100	7633.79	3168.98	1193.14	3066.49	0.58	
10377.00	90.710	91.020	7632.63	3262.33	1191.40	3160.47	0.09	
10471.00	90.710	85.700	7631.46	3356.06	1194.09	3254.39	5.66	

REFERENCE WELLPATH IDENTIFICATION			
Operator	Burlington Resources	Slot	SLOT#03 BIG SANDY 3-65 36-31 2AH (2545'FSL & 465'FEL, SEC.35)
Area	COLORADO	Well	BIG SANDY 3-65 36-31 2AH
Field	ADAMS COUNTY (NAD83/TN)	Wellbore	BIG SANDY 3-65 36-31 2AH AWP
Facility	SEC.35-T03S-R65W		

WELLPATH DATA (172 stations)								
MD [ft]	Inclination [°]	Azimuth [°]	TVD [ft]	Vert Sect [ft]	North [ft]	East [ft]	DLS [°/100ft]	Comments
10566.00	90.830	86.310	7630.18	3451.01	1200.71	3349.15	0.65	
10661.00	90.980	88.050	7628.68	3545.88	1205.38	3444.02	1.84	
10755.00	90.890	89.640	7627.15	3639.58	1207.28	3537.98	1.69	
10850.00	90.920	91.560	7625.65	3734.00	1206.28	3632.96	2.02	
10944.00	90.860	92.980	7624.19	3827.09	1202.56	3726.87	1.51	
11039.00	90.950	94.270	7622.69	3920.83	1196.56	3821.67	1.36	
11133.00	90.980	93.480	7621.11	4013.53	1190.20	3915.44	0.84	
11226.00	91.050	93.890	7619.46	4105.28	1184.23	4008.23	0.45	
11321.00	91.110	92.720	7617.67	4199.11	1178.75	4103.06	1.23	
11415.00	90.920	91.240	7616.00	4292.26	1175.51	4196.98	1.59	
11510.00	90.710	90.390	7614.65	4386.64	1174.15	4291.96	0.92	
11604.00	90.740	90.150	7613.46	4480.14	1173.71	4385.96	0.26	
11699.00	90.620	89.860	7612.33	4574.67	1173.70	4480.95	0.33	
11793.00	90.550	89.470	7611.37	4668.26	1174.25	4574.94	0.42	
11888.00	90.550	89.050	7610.46	4762.91	1175.48	4669.93	0.44	
11982.00	90.680	88.690	7609.45	4856.61	1177.33	4763.91	0.41	
12077.00	90.650	90.370	7608.35	4951.21	1178.11	4858.89	1.77	
12172.00	90.740	91.430	7607.20	5045.59	1176.62	4953.87	1.12	
12266.00	90.680	92.990	7606.03	5138.69	1173.00	5047.79	1.66	
12360.00	90.770	92.300	7604.84	5231.70	1168.66	5141.68	0.74	
12455.00	90.710	92.290	7603.62	5325.78	1164.85	5236.60	0.06	
12549.00	90.800	92.480	7602.38	5418.85	1160.94	5330.51	0.22	
12644.00	90.800	91.930	7601.05	5512.96	1157.29	5425.43	0.58	
12738.00	90.770	92.640	7599.76	5606.05	1153.54	5519.35	0.76	
12832.00	90.740	94.930	7598.53	5698.76	1147.34	5613.13	2.44	
12927.00	90.770	92.250	7597.27	5792.51	1141.39	5707.92	2.82	
13022.00	90.710	90.070	7596.05	5886.83	1139.47	5802.89	2.30	
13116.00	90.770	88.800	7594.83	5980.45	1140.39	5896.88	1.35	
13210.00	90.800	88.320	7593.54	6074.19	1142.76	5990.84	0.51	
13304.00	90.770	88.300	7592.26	6167.96	1145.53	6084.79	0.04	
13399.00	90.650	88.860	7591.08	6262.69	1147.88	6179.75	0.60	
13494.00	90.710	88.610	7589.95	6357.41	1149.98	6274.72	0.27	
13589.00	90.710	89.260	7588.78	6452.10	1151.74	6369.70	0.68	
13683.00	90.770	89.420	7587.56	6545.73	1152.83	6463.68	0.18	
13777.00	90.710	89.660	7586.35	6639.34	1153.58	6557.67	0.26	
13872.00	90.650	89.550	7585.22	6733.94	1154.24	6652.66	0.13	
13967.00	90.830	89.680	7583.99	6828.53	1154.87	6747.65	0.23	
14061.00	90.800	90.060	7582.66	6922.08	1155.09	6841.64	0.41	
14155.00	90.740	90.870	7581.39	7015.54	1154.32	6935.63	0.86	
14250.00	90.710	91.000	7580.19	7109.91	1152.77	7030.61	0.14	
14344.00	90.770	90.920	7578.98	7203.27	1151.20	7124.59	0.11	
14439.00	90.890	91.700	7577.60	7297.56	1149.03	7219.55	0.83	
14533.00	90.770	91.570	7576.24	7390.80	1146.35	7313.51	0.19	
14627.00	90.770	91.260	7574.98	7484.08	1144.03	7407.47	0.33	
14722.00	90.800	92.000	7573.67	7578.30	1141.32	7502.42	0.78	

REFERENCE WELLPATH IDENTIFICATION			
Operator	Burlington Resources	Slot	SLOT#03 BIG SANDY 3-65 36-31 2AH (2545'FSL & 465'FEL, SEC.35)
Area	COLORADO	Well	BIG SANDY 3-65 36-31 2AH
Field	ADAMS COUNTY (NAD83/TN)	Wellbore	BIG SANDY 3-65 36-31 2AH AWB
Facility	SEC.35-T03S-R65W		

WELLPATH DATA (172 stations)								
MD [ft]	Inclination [°]	Azimuth [°]	TVD [ft]	Vert Sect [ft]	North [ft]	East [ft]	DLS [°/100ft]	Comments
14816.00	90.860	91.930	7572.31	7671.46	1138.10	7596.35	0.10	
14910.00	90.740	91.490	7571.00	7764.68	1135.30	7690.30	0.49	
15006.00	90.770	90.110	7569.73	7860.06	1133.96	7786.28	1.44	
15100.00	91.050	90.190	7568.24	7953.57	1133.71	7880.27	0.31	
15195.00	90.650	91.200	7566.83	8047.98	1132.56	7975.25	1.14	
15290.00	90.770	91.290	7565.66	8142.29	1130.49	8070.22	0.16	
15384.00	90.800	90.670	7564.37	8235.65	1128.89	8164.20	0.66	
15479.00	90.770	92.330	7563.07	8329.90	1126.40	8259.15	1.75	
15573.00	90.740	94.060	7561.83	8422.77	1121.16	8353.00	1.84	
15667.00	90.680	93.260	7560.66	8515.53	1115.16	8446.80	0.85	
15762.00	90.680	91.120	7559.53	8609.63	1111.53	8541.72	2.25	
15856.00	90.650	89.140	7558.44	8703.14	1111.32	8635.70	2.11	
15951.00	90.920	88.640	7557.14	8797.83	1113.16	8730.68	0.60	
16045.00	90.890	89.600	7555.66	8891.49	1114.60	8824.65	1.02	
16140.00	90.920	91.190	7554.16	8985.95	1113.95	8919.64	1.67	
16234.00	91.110	91.870	7552.49	9079.20	1111.44	9013.59	0.75	
16329.00	90.740	91.690	7550.96	9173.39	1108.49	9108.53	0.43	
16424.00	90.620	92.060	7549.83	9267.57	1105.38	9203.47	0.41	
16518.00	91.020	92.630	7548.48	9360.65	1101.53	9297.38	0.74	
16612.00	91.110	91.620	7546.74	9453.77	1098.05	9391.30	1.08	
16707.00	90.830	91.150	7545.13	9548.04	1095.75	9486.26	0.58	
16801.00	91.230	91.430	7543.44	9641.33	1093.64	9580.22	0.52	
16896.00	90.770	91.220	7541.78	9735.62	1091.44	9675.18	0.53	
16990.00	90.620	90.220	7540.64	9829.03	1090.26	9769.16	1.08	
17085.00	90.580	87.090	7539.65	9923.75	1092.49	9864.12	3.29	
17179.00	90.620	85.800	7538.66	10017.68	1098.32	9957.93	1.37	
17274.00	90.830	86.270	7537.46	10112.63	1104.89	10052.70	0.54	
17368.00	90.740	90.100	7536.17	10206.39	1107.86	10146.62	4.08	
17463.00	90.460	94.060	7535.18	10300.50	1104.41	10241.54	4.18	
17556.00	90.430	95.160	7534.45	10392.02	1096.94	10334.23	1.18	
17650.00	90.680	92.210	7533.54	10484.76	1090.90	10428.02	3.15	
17745.00	90.740	91.690	7532.37	10578.92	1087.67	10522.96	0.55	
17839.00	90.550	91.940	7531.31	10672.11	1084.69	10616.91	0.33	
17933.00	90.740	91.990	7530.25	10765.28	1081.47	10710.85	0.21	
18028.00	90.620	91.890	7529.12	10859.44	1078.25	10805.78	0.16	
18122.00	90.490	91.140	7528.21	10952.70	1075.77	10899.75	0.81	LAST BHGE MWD SURVEY
18177.00	90.490	91.140	7527.74	11007.32	1074.67	10954.73	0.00	PROJECTION TO BIT

HOLE & CASING SECTIONS									
- Ref Wellbore: BIG SANDY 3-65 36-31 2AH AWB					Ref Wellpath: BIG SANDY 3-65 36-31 2AH AWP				
String/Diameter	Start MD [ft]	End MD [ft]	Interval [ft]	Start TVD [ft]	End TVD [ft]	Start N/S [ft]	Start E/W [ft]	End N/S [ft]	End E/W [ft]
9.625in Casing Surface	25.00	2081.00	2056.00	25.00	2080.96	0.00	0.00	2.96	-9.32
8.5in Open Hole	2081.00	18177.00	16096.00	2080.96	7527.74	2.96	-9.32	1074.67	10954.73

REFERENCE WELLPATH IDENTIFICATION			
Operator	Burlington Resources	Slot	SLOT#03 BIG SANDY 3-65 36-31 2AH (2545'FSL & 465'FEL, SEC.35)
Area	COLORADO	Well	BIG SANDY 3-65 36-31 2AH
Field	ADAMS COUNTY (NAD83/TN)	Wellbore	BIG SANDY 3-65 36-31 2AH AWB
Facility	SEC.35-T03S-R65W		

TARGETS								
Name	TVD [ft]	North [ft]	East [ft]	Grid East [US ft]	Grid North [US ft]	Latitude	Longitude	Shape
SEC.31-T05S-R64W	0.00	-79.94	-0.78	3246465.43	1151750.68	39°44'47.680"N	104°37'24.570"W	polygon
SEC.36-T05S-R64W	0.00	-79.94	-0.78	3246465.43	1151750.68	39°44'47.680"N	104°37'24.570"W	polygon
BIG SANDY 3-65 36-31 2AH BHL ON PLAT REV-1 (1557'FNL & 325'FEL, SEC.31)	7529.00	1083.08	10957.56	3257411.66	1153021.94	39°44'59.150"N	104°35'04.270"W	point
BIG SANDY 3-65 36-31 2AH BPI ON PLAT REV-1 (1533'FNL & 460'FWL, SEC.36)	7660.00	1198.06	931.81	3247385.33	1153037.83	39°45'00.310"N	104°37'12.630"W	point

WELLPATH COMPOSITION - Ref Wellbore: BIG SANDY 3-65 36-31 2AH AWB					Ref Wellpath: BIG SANDY 3-65 36-31 2AH AWP
Start MD	End MD	Positional Uncertainty Model	Log Name/Comment	Wellbore	
[ft]	[ft]				
25.00	2055.00	Gyrodatta standard - Drop gyro or Multi-shot	GYRODATA SURFACE SURVEYS <25 - 2055>	BIG SANDY 3-65 36-31 2AH AWB	
2055.00	18122.00	BHI AutoTrak Curve (IFR1, Short)	BHI AUTOTRAK CURVE (IFR1, SHORT) <2055 - 18122>	BIG SANDY 3-65 36-31 2AH AWB	
18122.00	18177.00	Blind Drilling (std)	Projection to bit	BIG SANDY 3-65 36-31 2AH AWB	

REFERENCE WELLPATH IDENTIFICATION			
Operator	Burlington Resources	Slot	SLOT#03 BIG SANDY 3-65 36-31 2AH (2545'FSL & 465'FEL, SEC.35)
Area	COLORADO	Well	BIG SANDY 3-65 36-31 2AH
Field	ADAMS COUNTY (NAD83/TN)	Wellbore	BIG SANDY 3-65 36-31 2AH AWB
Facility	SEC.35-T03S-R65W		

WELLPATH COMMENTS				
MD [ft]	Inclination [°]	Azimuth [°]	TVD [ft]	Comment
2055.00	0.290	296.340	2054.96	TIE INTO GYRO SURVEYS
18122.00	90.490	91.140	7528.21	LAST BHGE MWD SURVEY
18177.00	90.490	91.140	7527.74	PROJECTION TO BIT