



Extraction Oil & Gas  
Project: Weld County, CO (NAD83)  
Site: Sec 10-T01S-R68W Interchange Pad  
Well: Interchange B N35-20-7N  
Wellbore: Wellbore #1  
Design: Wellbore #1 (Interchange B N35-20-7N/Wellbore #1)  
Patterson 901

PROJECT DETAILS: Weld County, CO (NAD83)  
Geodetic System: US State Plane 1983  
Datum: North American Datum 1983  
Ellipsoid: GRS 1980  
Zone: Colorado Northern Zone  
System Datum: Ground Level  
Local North: True

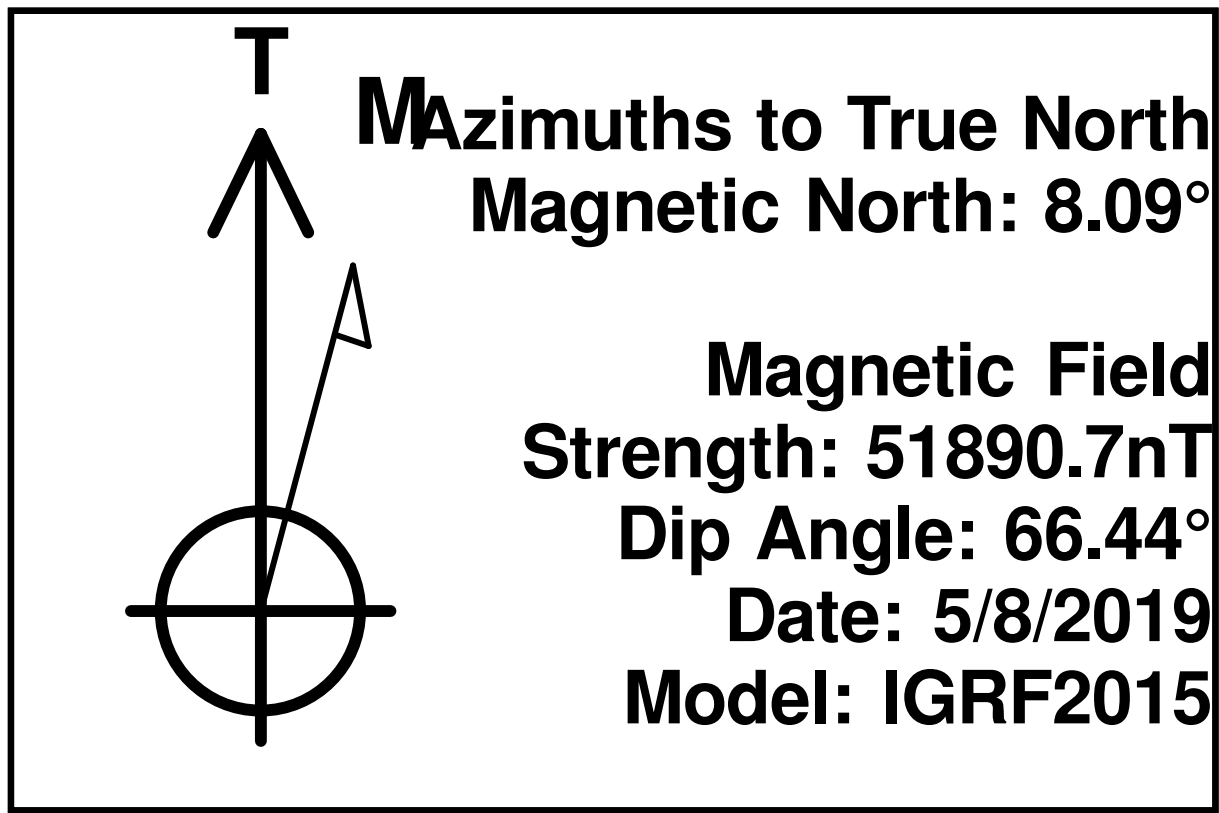


WELL DETAILS: Interchange B N35-20-7N  
Ground Elevation:: 5213.00  
RKB Elevation: KB @ 5241.00usft (Patterson 901)  
Rig Name: Patterson 901

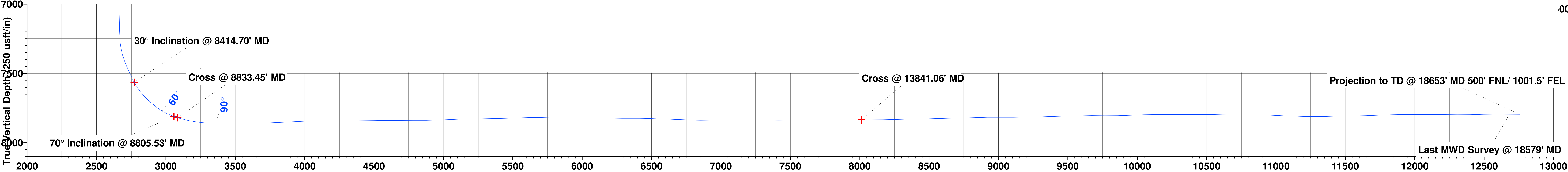
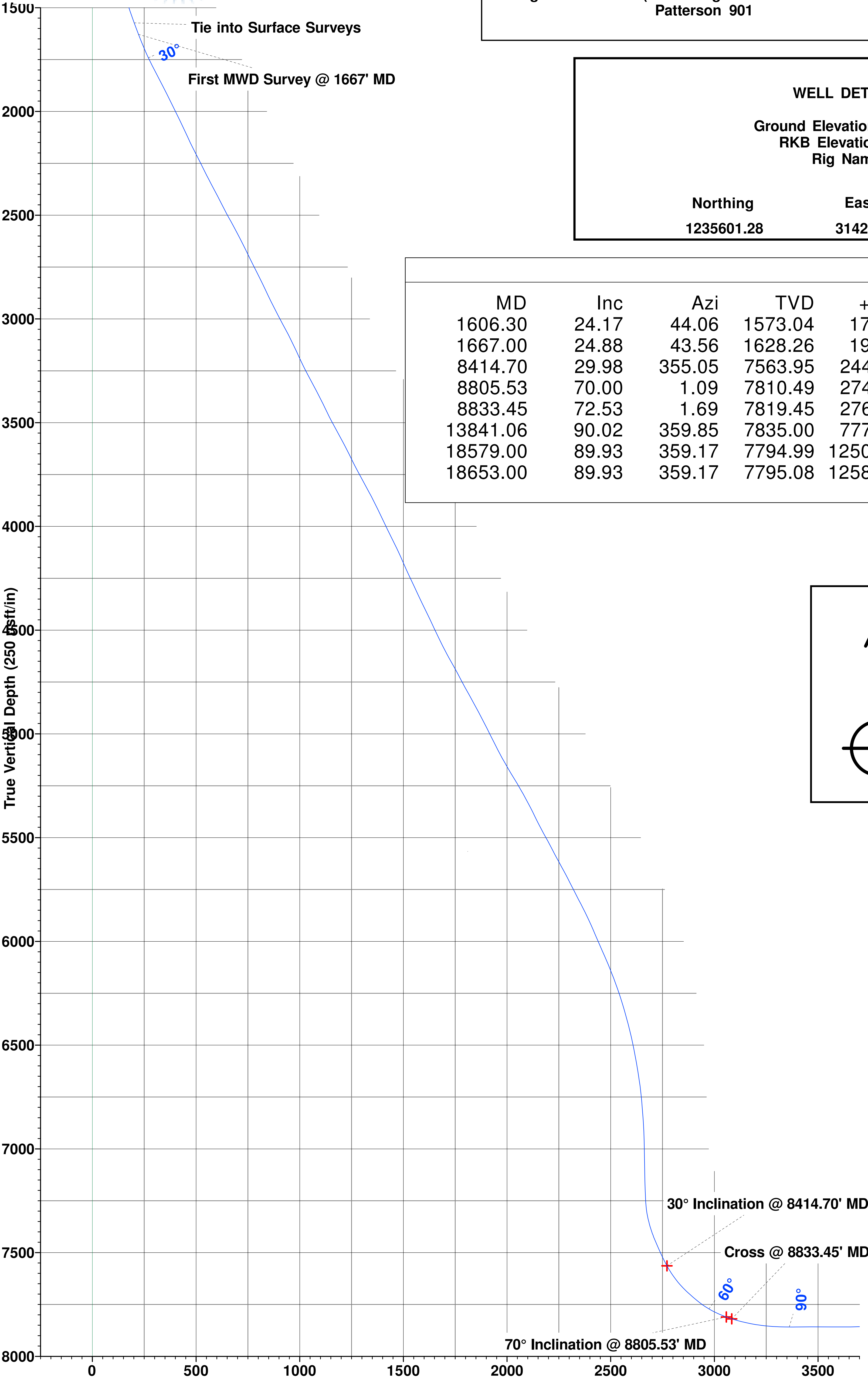
Northing	Easting	Latitude	Longitude
1235601.28	3142562.59	39.978987	-104.991281

ANNOTATIONS

MD	Inc	Azi	TVD	+N/-S	+E/-W	VSect	Departure	Annotation
1606.30	24.17	44.06	1573.04	176.57	166.37	201.64	247.47	Tie into Surface Surveys
1667.00	24.88	43.56	1628.26	194.76	183.81	222.46	272.67	First MWD Survey @ 1667' MD
8414.70	29.98	355.05	7563.95	2449.89	2150.54	2771.64	3301.83	30° Inclination @ 8414.70' MD
8805.53	70.00	1.09	7810.49	2742.57	2136.55	3057.98	3594.09	70° Inclination @ 8805.53' MD
8833.45	72.53	1.69	7819.45	2769.00	2137.19	3084.15	3620.16	Cross @ 8833.45' MD
13841.06	90.02	359.85	7835.00	7770.00	2120.59	8013.63	8622.64	Cross @ 13841.06' MD
18579.00	89.93	359.17	7794.99	12506.36	2109.37	12682.99	13359.52	Last MWD Survey @ 18579' MD
18653.00	89.93	359.17	7795.08	12580.35	2108.30	12755.79	13433.52	Projection to TD @ 18653' MD 500' FNL/ 1001.5' FEL



SHL/ 2500' FSL & 1655' FWL  
KOP/425' FNL & 1469' FEL  
LP/150' FSL & 1475' FEL  
BHL/ 460' FNL & 1017' FEL  
Ground Elevation 5213'



Vertical Section at 9.51° (250 usft/in)

