



Extraction Oil & Gas
 Project: Weld County, CO (NAD83)
 Site: Sec 10-T01S-R68W Interchange Pad
 Well: Interchange B N35-20-6N
 Wellbore: Wellbore #1
 Design: Wellbore #1 (Interchange B N35-20-6N/Wellbore #1)
 Patterson 901

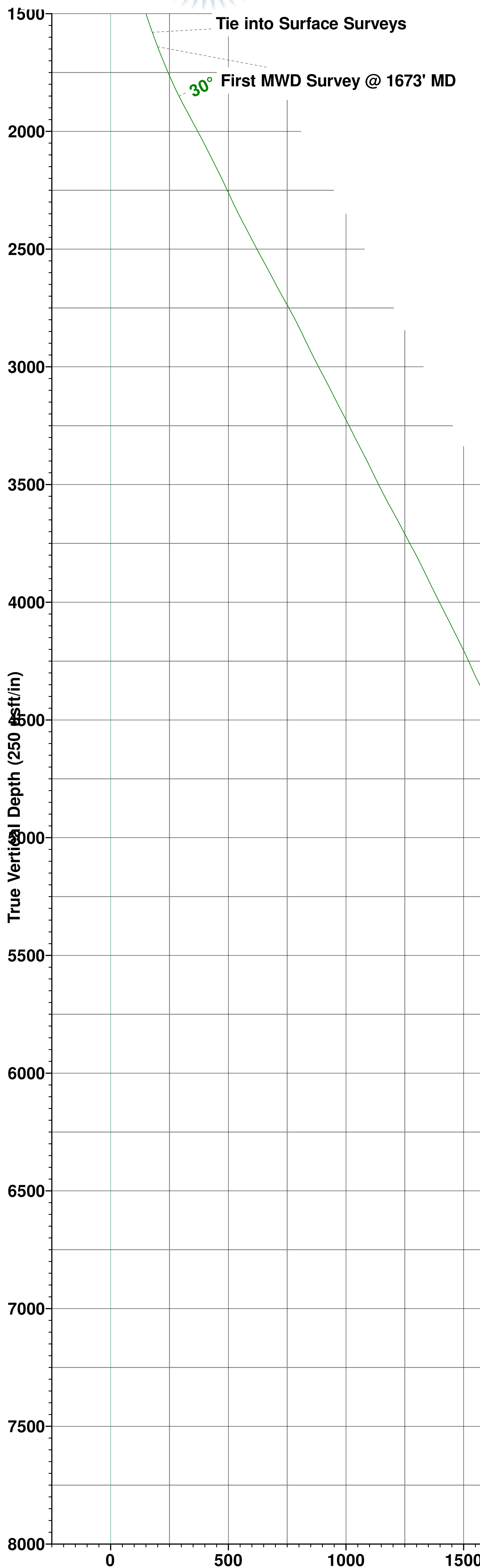
PROJECT DETAILS: Weld County, CO (NAD83)
 Geodetic System: US State Plane 1983
 Datum: North American Datum 1983
 Ellipsoid: GRS 1980
 Zone: Colorado Northern Zone
 System Datum: Ground Level
 Local North: True



WELL DETAILS: Interchange B N35-20-6N

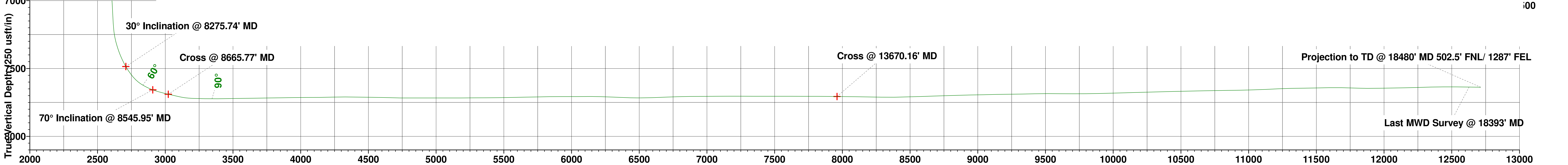
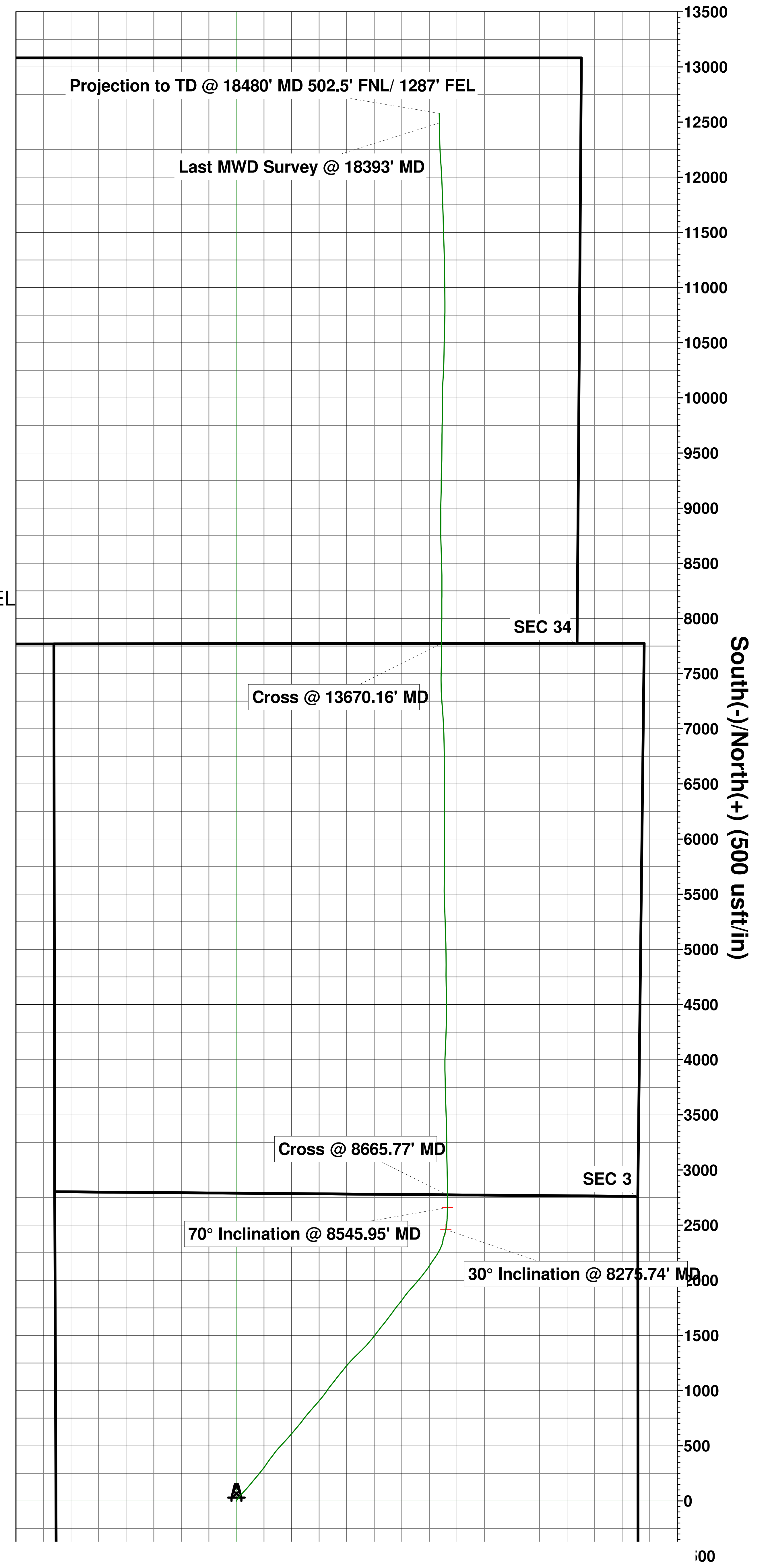
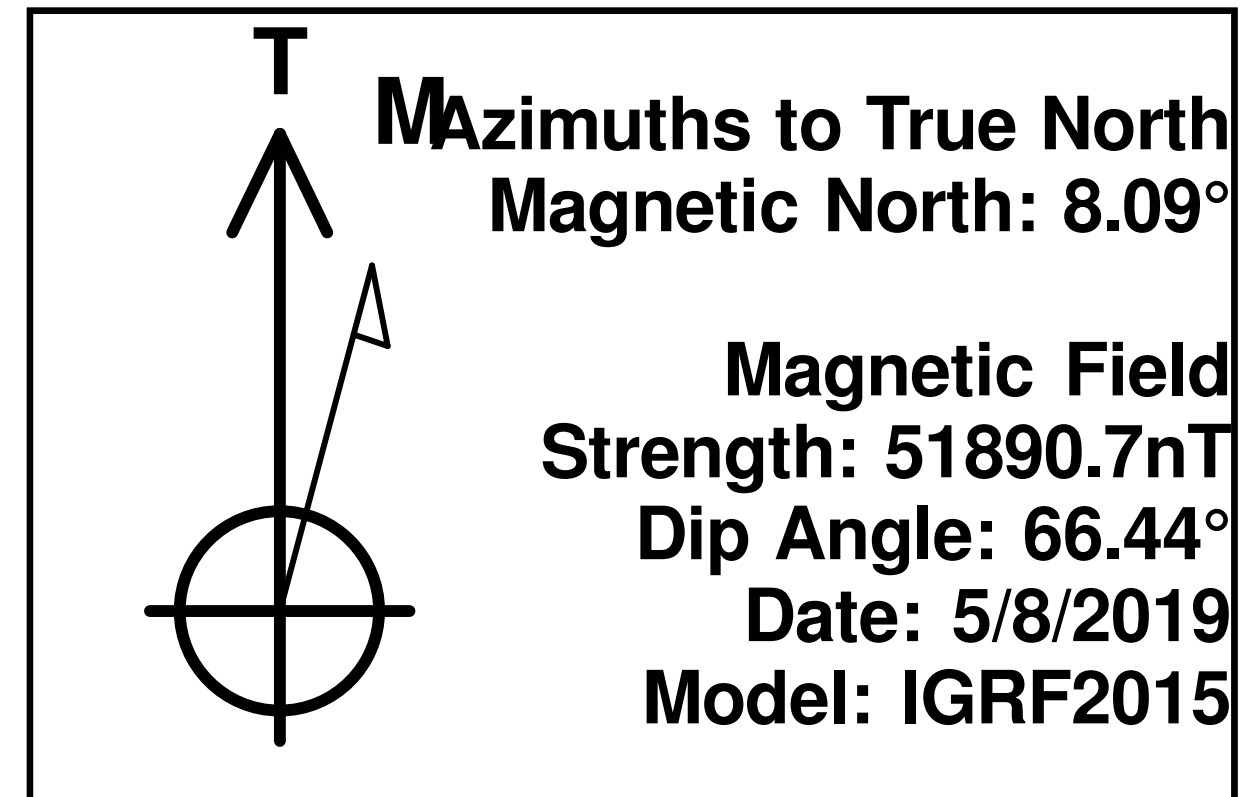
Ground Elevation:: 5213.00
 RKB Elevation: kb @ 5241.00usft (Patterson 901)
 Rig Name: Patterson 901

Northing	Easting	Latitude	Longitude
1235597.17	3142545.23	39.978976	-104.991343



ANNOTATIONS

MD	Inc	Azi	TVD	+N/-S	+E/-W	Vsect	Departure	Annotation
1606.30	22.90	39.84	1579.30	159.33	133.99	177.05	214.26	Tie into Surface Surveys
1673.00	23.91	39.69	1640.51	179.70	150.94	199.65	240.76	First MWD Survey @ 1673' MD
8275.74	30.00	12.25	7485.59	2459.69	1900.11	2708.82	3132.80	30° Inclination @ 8275.74' MD
8545.95	70.00	1.81	7657.38	2658.78	1914.95	2907.97	3333.22	70° Inclination @ 8545.95' MD
8665.77	77.19	0.06	7689.93	2774.00	1917.11	3022.28	3447.97	Cross @ 8665.77' MD
13670.16	89.49	359.58	7706.65	7773.00	1861.96	7960.66	8448.83	Cross @ 13670.16' MD
18393.00	89.13	358.73	7636.89	12492.83	1842.26	12627.93	13170.44	Last MWD Survey @ 18393' MD
18480.00	89.13	358.73	7638.21	12579.80	1840.33	12713.70	13257.43	Projection to TD @ 18480' MD 502.5' FNL/ 1287' FEL



Vertical Section at 8.32° (250 usft/in)