

HALLIBURTON

iCem[®] Service

EXTRACTION OIL & GAS

INTERCHANGE B N35-20-2C Surface

Sincerely,
Meghan Jacobs

Legal Notice

Disclaimer:

All information in this report is provided subject to the terms and conditions which govern the services provided by Halliburton. Halliburton personnel use their best efforts in gathering information and their best judgment in interpreting it, but any interpretation, research, analysis or recommendation furnished by Halliburton are opinions based upon inferences from measurements and empirical relationships and assumptions, which inferences and empirical relationships and assumptions are not infallible, and with respect to which professionals in the industry may differ. iCem 3D Displacement results are used to understand how fluids intermix during a cement job. Simulation and 3D displacement results are not intended as and should not be used as a replacement for bond logs in determining top of cement. Current 3D model calculations are known to model more volume than the input volume for standard cases due to known calculation improvements required. For rotational cases, the modeled volume will be impacted by the same calculations impacting the standard cases, as well as additional constraints imposed to make the calculation time required operationally feasible. Therefore, until further notice, 3D displacement results should not be used for replacement of a bond log, or used as an identifier of top of cement. HALLIBURTON IS UNABLE TO GUARANTEE THE ACCURACY OF ANY CHART INTERPRETATION, RESEARCH ANALYSIS, OR JOB RECOMMENDATION and any interpretation or recommendation is not for use of or reliance upon by any third party. The customer has full responsibility for any of its decisions which are based on the information provided in this report.

Table of Contents

1.0 Cementing Job Summary 4

 1.1 Executive Summary4

2.0 Real-Time Job Summary 7

 2.1 Job Event Log7

3.0 Attachments..... 8

 3.1 Interchange B N35-20-2C Surface – Job Chart with Events8

1.0 Cementing Job Summary

1.1 Executive Summary

Halliburton appreciates the opportunity to perform the cementing services on the **Interchange B N35-20-2C** cement **Surface** casing job. A pre-job safety meeting was held before the job where details of the job were discussed, potential safety hazards were reviewed, and environmental compliance procedures were outlined.

Approximately 20 bbls of cement were returned to surface.

Halliburton maintains a continuous quality improvement process and appreciates any comments or suggestions that you may have. Halliburton again thanks you for the opportunity to perform service work on this well. We hope to be your solutions provider for future projects.

Respectfully,

Halliburton Fort Lupton

The Road to Excellence Starts with Safety

Sold To #: 369404		Ship To #: 3954713		Quote #:		Sales Order #: 0905578246				
Customer: EXTRACTION OIL & GAS -				Customer Rep: JUSTIN						
Well Name: INTERCHANGE B			Well #: N35-20-2C			API/UWI #: 05-014-20846-00				
Field: WATTENBERG		City (SAP): BROOMFIELD		County/Parish: BROOMFIELD		State: COLORADO				
Legal Description: NE SW-10-1S-68W-2479FSL-1567FWL										
Contractor:				Rig/Platform Name/Num: Cartel 15						
Job BOM: 7521 7521										
Well Type: HORIZONTAL OIL										
Sales Person: HALAMERICA\HX38199				Srv Supervisor: Nicholas Ralston						
Job										
Formation Name										
Formation Depth (MD)		Top		Bottom						
Form Type				BHST						
Job depth MD		1642ft		Job Depth TVD						
Water Depth				Wk Ht Above Floor						
Perforation Depth (MD)		From		To						
Well Data										
Description	New / Used	Size in	ID in	Weight lbm/ft	Thread	Grade	Top MD ft	Bottom MD ft	Top TVD ft	Bottom TVD ft
Casing	0	9.625	8.921	36	8 RD	J-55	0	1591	0	0
Open Hole Section			13.5				0	1591	0	0
Tools and Accessories										
Type	Size in	Qty	Make	Depth ft		Type	Size in	Qty	Make	
Guide Shoe	9.625			0		Top Plug	9.625	1	HES	
Float Shoe	9.625					Bottom Plug	9.625		HES	
Float Collar	9.625					SSR plug set	9.625		HES	
Insert Float	9.625					Plug Container	9.625	1	HES	
Stage Tool	9.625					Centralizers	9.625		HES	
Fluid Data										
Stage/Plug #: 1										
Fluid #	Stage Type	Fluid Name	Qty	Qty UoM	Mixing Density lbm/gal	Yield ft3/sack	Mix Fluid Gal	Rate bbl/min	Total Mix Fluid Gal	
1	Red Dye Spacer	Red Dye Spacer	10	bbl	8.33			5		

Fluid #	Stage Type	Fluid Name	Qty	Qty UoM	Mixing Density lbm/gal	Yield ft ³ /sack	Mix Fluid Gal	Rate bbl/min	Total Mix Fluid Gal
2	SwiftCem	SWIFTCM (TM) SYSTEM	550	sack	13.5	1.74		8	9.2
Fluid #	Stage Type	Fluid Name	Qty	Qty UoM	Mixing Density lbm/gal	Yield ft ³ /sack	Mix Fluid Gal	Rate bbl/min	Total Mix Fluid Gal
3	Fresh Water	Fresh Water	120.4	bbl	8.33			8.5	
Cement Left In Pipe		Amount	43 ft		Reason			Shoe Joint	
Mix Water:			Mix Water Chloride:				Mix Water Temperature:		
Cement Temperature:			Plug Displaced by:		FRESH WATER		Disp. Temperature:		
Plug Bumped?		YES	Bump Pressure:		626 TO 1275 PSI		Floats Held?		YES
Cement Returns:		20 BBLS	Returns Density:				Returns Temperature:		
Comment									

2.0 Real-Time Job Summary

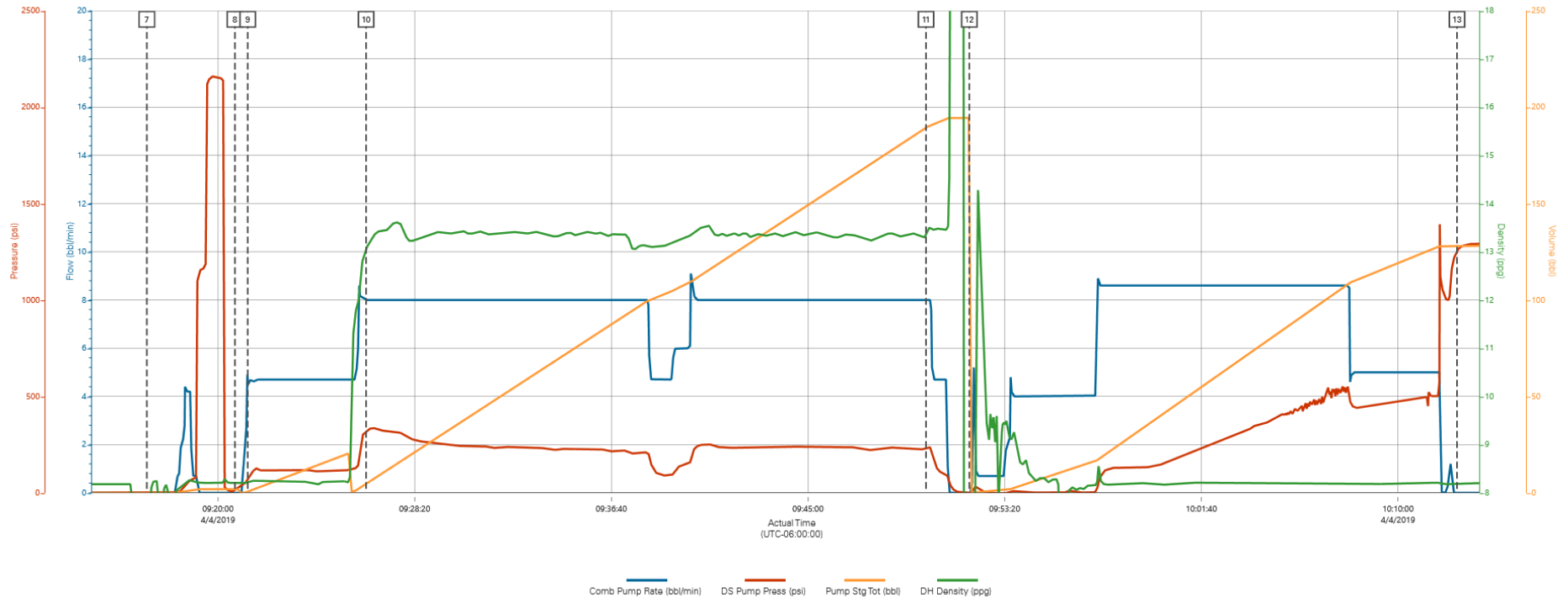
2.1 Job Event Log

Type	Seq. No.	Activity	Graph Label	Date	Time	Source	Comb Pump Rate (bbl/min)	DS Pump Press (psi)	DH Density (ppg)	Comments
Event	1	Call Out	Call Out	4/4/2019	04:00:00	USER				GOT CALL OUT FOR EXTRACTION SURFACE N35-20-2C ON LOCATION AT 0800
Event	2	Other	Other	4/4/2019	04:30:00	USER				HAVE ALL EQUIPMENT FOR CEMENT JOB
Event	3	Arrive At Loc	Arrive At Loc	4/4/2019	08:00:00	USER				GOT NEW NUMBER WITH COMPANY MAN TD 1642 TP 1651 SJ 43 MW 8.6 OH 13 1/2 WATER TESTED GOOD
Event	4	Other	Other	4/4/2019	08:36:40	USER	0.00	40.00	-0.01	RIG STILL RUNNING CASING
Event	5	Pre-Rig Up Safety Meeting	Pre-Rig Up Safety Meeting	4/4/2019	08:36:42	USER	0.00	40.00	-0.01	HELD PRE -JOB SAFETY MEETING WITH CREW
Event	6	Rig-Up Equipment	Rig-Up Equipment	4/4/2019	08:36:45	USER	0.00	40.00	-0.01	RIG UP ALL IRON AND HOSES TO RIG AND RIG UP CEMENT HEAD
Event	7	Start Job	Start Job	4/4/2019	09:16:59	COM5	0.00	1.00	1.55	STARTED EXTRACTION N35-20-2C SURFACE CEMENT JOB
Event	8	Test Lines	Test Lines	4/4/2019	09:20:43	COM5	0.00	5.00	8.20	TEST KO TO 500 PSI TO 2000 PSI BOTH TESTED GOOD
Event	9	Pump Spacer 1	Pump Spacer 1	4/4/2019	09:21:15	COM5	4.90	74.00	8.21	PUMP 10 BBLS OF FRESH WATER WITH RED DYE AT 5 BPM 116 PSI
Event	10	Pump Cement	Pump Cement	4/4/2019	09:26:17	COM5	8.00	316.00	13.07	PUMP CEMENT 170 BBLS 550 SACKS AT 8 BPM 333 PSI AT 13.5
Event	11	Drop Top Plug	Drop Top Plug	4/4/2019	09:50:00	USER	8.00	233.00	13.36	DROP TOP PLUG
Event	12	Pump Displacement	Pump Displacement	4/4/2019	09:51:50	COM5	0.00	-1.00	-1.67	PUMP 120 BBLS OF FRESH WATER AT 8.5 BPM 100 PSI
Event	13	Bump Plug	Bump Plug	4/4/2019	10:12:30	COM5	0.00	1257.00	8.19	BUMP PLUG AT 626 PSI TO 1275 PSI CHECK FLOATS WITH 1/2 BBLS BACK 20 BBLS OF CEMENT TO SURFACE
Event	14	Crew Leave Location	Crew Leave Location	4/4/2019	10:47:49	USER				CREW STAYING ON LOCATION FOR NEXT WELL

3.0 Attachments

3.1 Interchange B N35-20-2C Surface – Job Chart with Events

Interchange B N35-20-2C Surface



HALLIBURTON | iCem® Service

Created: 2019-04-04 08:30:45, (UTC-06:00), Version: 5.1.78.0

Edit

Customer: EXTRACTION OIL & GAS
Representative:

Job Date: 4/4/2019
Sales Order #:

Well: INTERCHANGE B