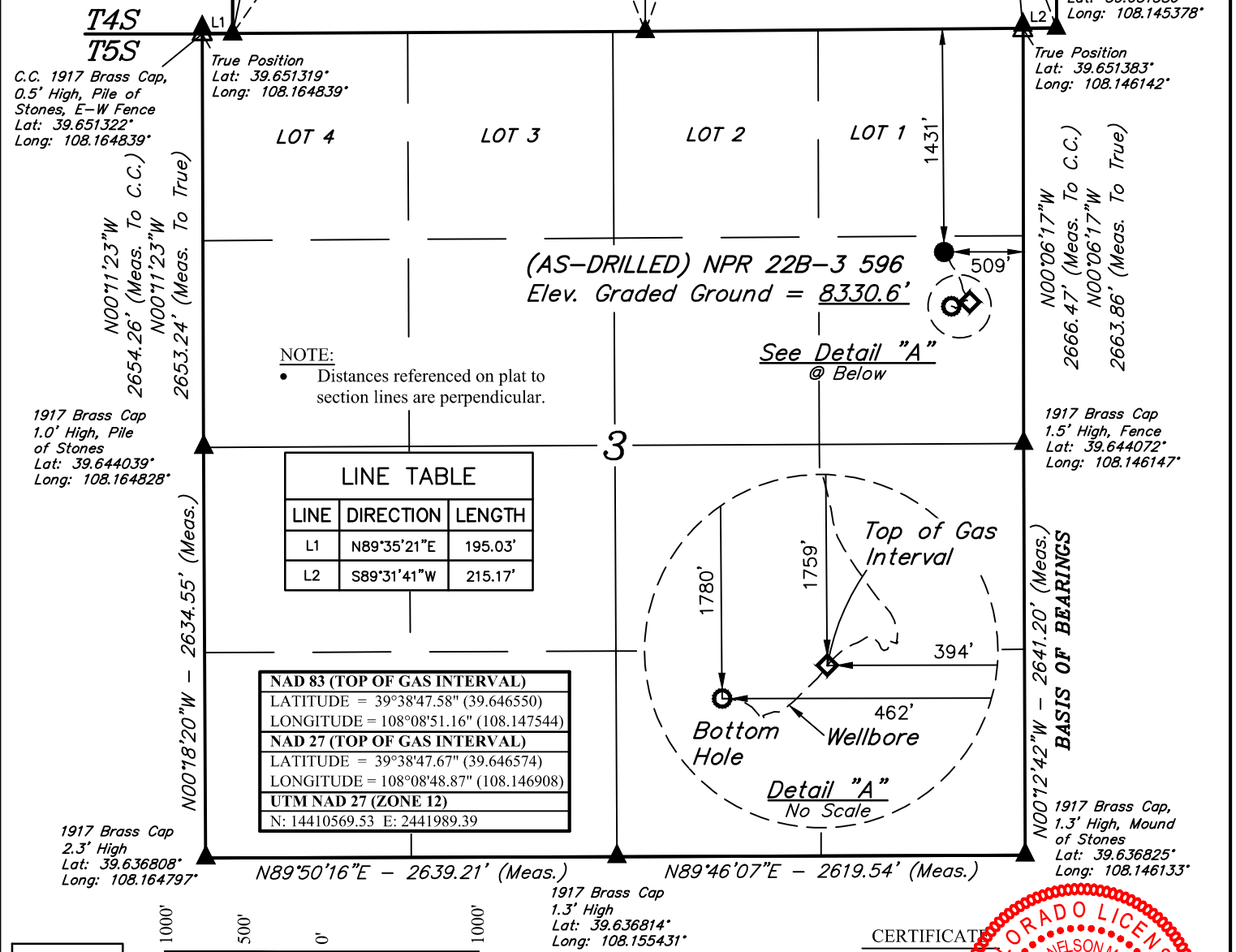


T5S, R96W, 6th P.M.

Sec. 34

LEGEND:

- = AS-DRILLED WELLHEAD.
- ◆ = TOP OF GAS INTERVAL
- = BOTTOM HOLE.
- ▲ = SECTION CORNERS LOCATED. (NAD 83)
- △ = SECTION CORNERS RE-ESTABLISHED. (Not Set on Ground.) (NAD 83)



NOTE:
 • Distances referenced on plat to section lines are perpendicular.

LINE TABLE		
LINE	DIRECTION	LENGTH
L1	N89°35'21"E	195.03'
L2	S89°31'41"W	215.17'

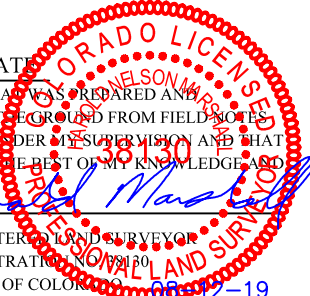
NAD 83 (TOP OF GAS INTERVAL)	
LATITUDE = 39°38'47.58" (39.646550)	
LONGITUDE = 108°08'51.16" (108.147544)	
NAD 27 (TOP OF GAS INTERVAL)	
LATITUDE = 39°38'47.67" (39.646574)	
LONGITUDE = 108°08'48.87" (108.146908)	
UTM NAD 27 (ZONE 12)	
N: 14410569.53 E: 2441989.39	

PDOP = 1.2



NAD 83 (AS-DRILLED LOCATION)		NAD 83 (BOTTOM HOLE)	
LATITUDE = 39°38'50.82" (39.647449)		LATITUDE = 39°38'47.37" (39.646492)	
LONGITUDE = 108°08'52.62" (108.147950)		LONGITUDE = 108°08'52.02" (108.147784)	
NAD 27 (AS-DRILLED LOCATION)		NAD 27 (BOTTOM HOLE)	
LATITUDE = 39°38'50.90" (39.647473)		LATITUDE = 39°38'47.46" (39.646516)	
LONGITUDE = 108°08'50.33" (108.147314)		LONGITUDE = 108°08'49.73" (108.147148)	
UTM NAD 27 (ZONE 12)		UTM NAD 27 (ZONE 12)	
N: 14410443.32 E: 2443490.36		N: 14410548.66 E: 2443159.69	

CERTIFICATE
 THIS IS TO CERTIFY THAT THE ABOVE PLAT WAS PREPARED AND THE LOCATION AS SHOWN WAS STAKED ON THE GROUND FROM FIELD NOTES OF ACTUAL SURVEYS MADE BY ME OR UNDER MY SUPERVISION AND THAT THE SAME ARE TRUE AND CORRECT TO THE BEST OF MY KNOWLEDGE AND BELIEF.
Handwritten Signature
 REGISTERED LAND SURVEYOR
 REGISTRATION NO. 38130
 STATE OF COLORADO 08-12-19



REV: 1 08-12-19 M.D. (TGI AND BHL MOVES)

BASIS OF BEARINGS
 BEARINGS ARE BASED ON THE ASSUMPTION THAT THE EAST LINE OF THE SOUTHEAST 1/4 OF SECTION 3 BEARS N00°12'42"W. MONUMENTS DESCRIBED HEREON.

BASIS OF ELEVATION
 BENCH MARK (H79) LOCATED IN THE NE 1/4 OF SECTION 35, T4S, R98W, 6th P.M., TAKEN FROM THE BULL FORK, QUADRANGLE, COLORADO, 7.5 MINUTE SERIES (TOPOGRAPHIC MAP) PUBLISHED BY THE UNITED STATES DEPARTMENT OF THE INTERIOR, GEOLOGICAL SURVEY. SAID ELEVATION IS MARKED AS BEING 8535 FEET.



UELS, LLC
 Corporate Office * 85 South 200 East
 Vernal, UT 84078 * (435) 789-1017



Caerus Oil & Gas LLC

(AS-DRILLED) NPR 22B-3 596
 SE 1/4 NE 1/4, SECTION 3, T5S, R96W, 6th P.M.
 GARFIELD COUNTY, COLORADO

SURVEYED BY	JOEL LEFEVERE, D.P.	04-16-19	SCALE
DRAWN BY	M.D.	04-23-19	1" = 1000'

AS-DRILLED WELL LOCATION PLAT