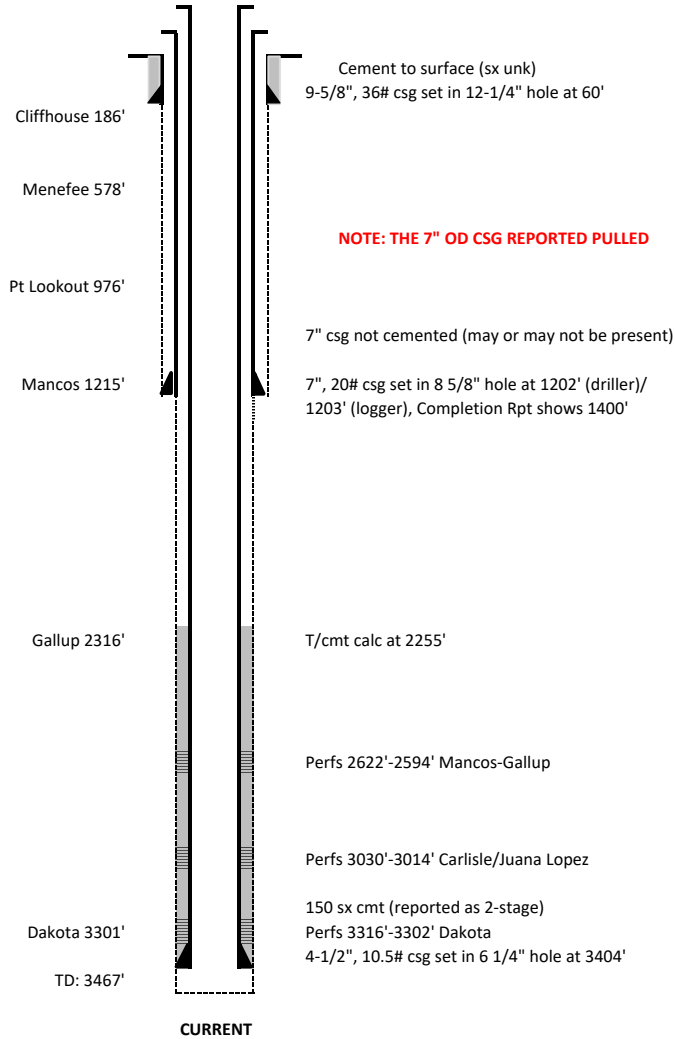


**Ester #1 BOND CLAIM**  
**API # 067-06232**  
**SESE 21 33N 12W**  
**La Plata County, CO**



Plug #1 = 25 sx  
 Plug #2 = 5 sx  
 Plug #3 = 30 sx  
 Plug #4 = 60 sx  
 Plug #5 = 50 sx  
 Plug #6 = 50 sx  
 Plug #7 = 75 sx  
 Total sx = 295 sx

Run 4-1/2" csg CBL/CCL  
 (2) 4-1/2" CICR  
 (2) 7" CICR  
 1 - Cut & retrieve 4" csg  
 3 - Sets of perfs in 7" csg

4.5" csg vol = .09124 ft<sup>3</sup>/ft or .01625 bbls/ft  
 4.5" x 6.25" annular vol = .1026 ft<sup>3</sup>/ft or .0183 bbls/ft  
 6.25" hole vol = .2131 ft<sup>3</sup>/ft or .0379 bbls/ft  
 7" csg vol = .2273 ft<sup>3</sup>/ft or .0404 bbls/ft  
 7" x 8.625" annular vol = .1385 ft<sup>3</sup>/ft or 0.0247 bbls/ft  
 8.625" hole vol = .4057 ft<sup>3</sup>/ft or .0723 bbls/ft  
 7" x 9.625" annular vol = .1668 ft<sup>3</sup>/ft or .0297 bbls/ft  
 Steel = 389 #/ft<sup>3</sup>; 4.5 csg = .0267 ft<sup>3</sup>/ft; 7" csg = .0514 ft<sup>3</sup>/ft

