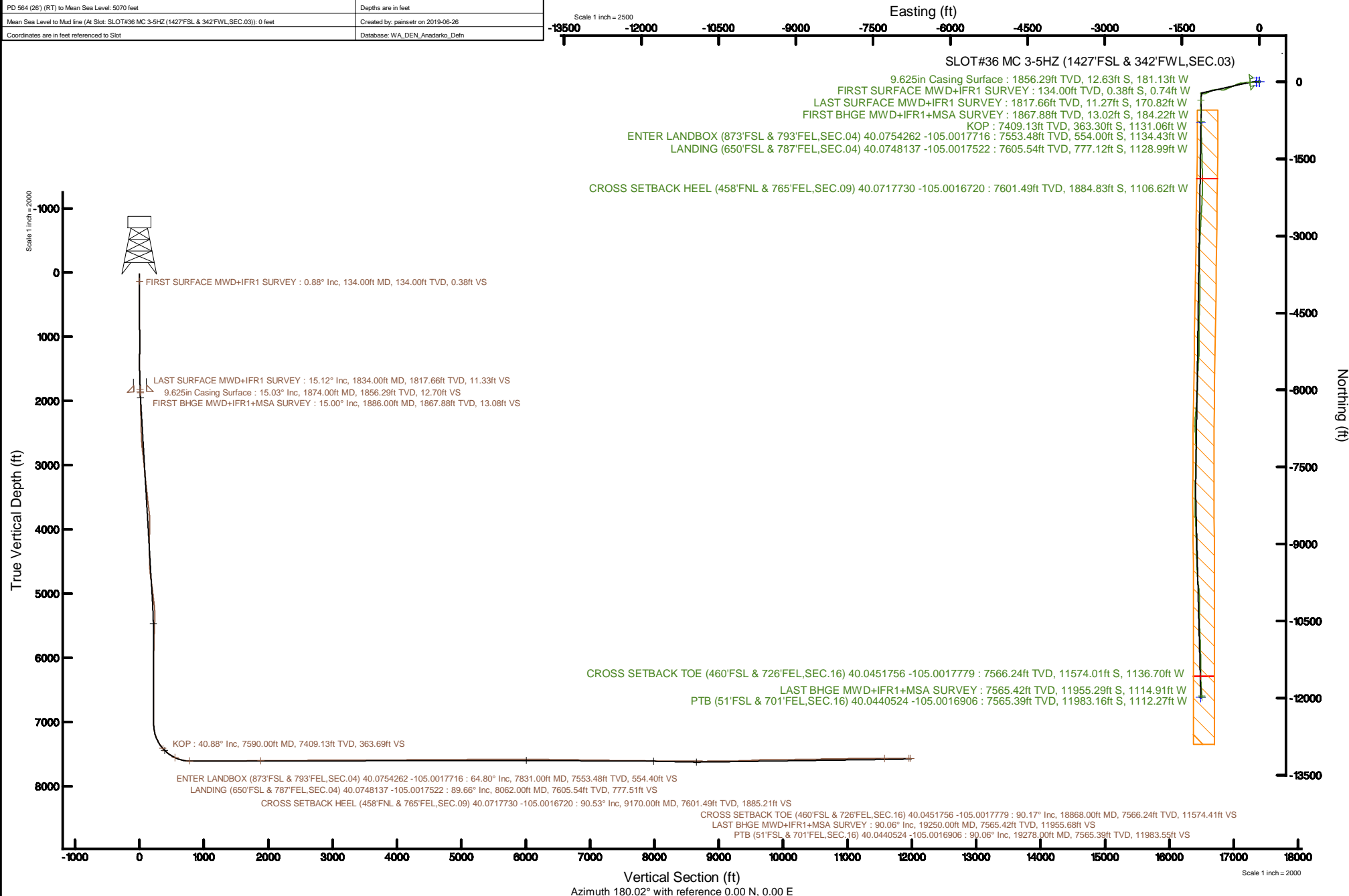


KERR-MCGEE OIL & GAS ONSHORE LP (WA)

Location: COLORADO Slot: SLOT#36 MC 3-5HZ (1427'FSL & 342'FWL,SEC.03)
 Field: WELD COUNTY (UTM/TRUE NORTH) Well: MC 3-5HZ
 Facility: SEC.03-T1N-R68W Wellbore: MC 3-5HZ PWB

Plot reference wellpath is MC 3-5HZ PWP Rev-A.0	Grid System: NAD83 / UTM Zone 13 North, US feet
True vertical depths are referenced to PD 564 (26) (RT)	North Reference: True north
Measured depths are referenced to PD 564 (26) (RT)	Scale: True distance
PD 564 (26) (RT) to Mean Sea Level: 5070 feet	Depths are in feet
Mean Sea Level to Mud line (At Slot: SLOT#36 MC 3-5HZ (1427'FSL & 342'FWL,SEC.03)): 0 feet	Created by: painsetr on 2019-06-26
Coordinates are in feet referenced to Slot	Database: WA_DEN, Anadarko_Defn



Actual Wellpath Report

MC 3-5HZ AWP

Page 1 of 8

REFERENCE WELLPATH IDENTIFICATION			
Operator	KERR-MCGEE OIL & GAS ONSHORE LP (WA)	Slot	SLOT#36 MC 3-5HZ (1427'FSL & 342'FWL,SEC.03)
Area	COLORADO	Well	MC 3-5HZ
Field	WELD COUNTY (UTM/TRUE NORTH)	Wellbore	MC 3-5HZ AWB
Facility	SEC.03-T1N-R68W		

REPORT SETUP INFORMATION			
Projection System	NAD83 / UTM Zone 13 North, US feet	Software System	WellArchitect@ 5.1
North Reference	True	User	Painsetr
Scale	0.999600	Report Generated	6/26/2019 at 10:01:32 AM
Convergence at slot	0.00°	Database/Source file	WA_DEN_Anadarko_Defn/MC_3-5HZ_AWP.xml

WELLPATH LOCATION						
	Local coordinates		Grid coordinates		Geographic coordinates	
	North[ft]	East[ft]	Easting[US ft]	Northing[US ft]	Latitude	Longitude
Slot Location	-277.94	-836.19	1641055.03	14554753.18	40°04'37.009"N	104°59'51.785"W
Facility Reference Pt			1641890.86	14555031.06	40°04'39.756"N	104°59'41.028"W
Field Reference Pt			1698235.31	14552047.82	40°04'09.600"N	104°47'36.000"W

WELLPATH DATUM			
Calculation method	Minimum curvature	PD 564 (26') (RT) to Facility Vertical Datum	5070.00ft
Horizontal Reference Pt	Slot	PD 564 (26') (RT) to Mean Sea Level	5070.00ft
Vertical Reference Pt	PD 564 (26') (RT)	PD 564 (26') (RT) to Mud Line at Slot (SLOT#36 MC 3-5HZ (1427'FSL & 342'FWL,SEC.03))	5070.00ft
MD Reference Pt	PD 564 (26') (RT)	Section Origin	N 0.00, E 0.00 ft
Field Vertical Reference	Mean Sea Level	Section Azimuth	180.02°

Actual Wellpath Report

MC 3-5HZ AWP

Page 2 of 8

REFERENCE WELLPATH IDENTIFICATION			
Operator	KERR-MCGEE OIL & GAS ONSHORE LP (WA)	Slot	SLOT#36 MC 3-5HZ (1427'FSL & 342'FWL,SEC.03)
Area	COLORADO	Well	MC 3-5HZ
Field	WELD COUNTY (UTM/TRUE NORTH)	Wellbore	MC 3-5HZ AWB
Facility	SEC.03-T1N-R68W		

WELLPATH DATA (218 stations) † = interpolated/extrapolated station												
MD [ft]	Inclination [°]	Azimuth [°]	TVD [ft]	Vert Sect [ft]	North [ft]	East [ft]	Grid East [US ft]	Grid North [US ft]	Latitude	Longitude	DLS [°/100ft]	Comments
0.00†	0.000	242.520	0.00	0.00	0.00	0.00	1641055.03	14554753.18	40°04'37.009"N	104°59'51.785"W	0.00	
26.00	0.000	242.520	26.00	0.00	0.00	0.00	1641055.03	14554753.18	40°04'37.009"N	104°59'51.785"W	0.00	
134.00	0.880	242.520	134.00	0.38	-0.38	-0.74	1641054.29	14554752.80	40°04'37.005"N	104°59'51.794"W	0.81	FIRST SURFACE MWD+IFR1 SURVEY
229.00	0.660	303.610	228.99	0.42	-0.42	-1.84	1641053.19	14554752.77	40°04'37.005"N	104°59'51.808"W	0.85	
324.00	1.010	57.340	323.98	-0.34	0.34	-1.59	1641053.44	14554753.52	40°04'37.013"N	104°59'51.805"W	1.49	
419.00	1.140	70.170	418.97	-1.11	1.11	0.00	1641055.03	14554754.29	40°04'37.020"N	104°59'51.785"W	0.29	
515.00	0.830	170.280	514.96	-0.75	0.75	1.02	1641056.04	14554753.93	40°04'37.017"N	104°59'51.772"W	1.59	
610.00	0.920	203.060	609.95	0.63	-0.63	0.84	1641055.86	14554752.55	40°04'37.003"N	104°59'51.774"W	0.53	
705.00	1.190	278.120	704.93	1.19	-1.19	-0.44	1641054.59	14554751.99	40°04'36.997"N	104°59'51.790"W	1.37	
800.00	1.710	260.630	799.90	1.29	-1.28	-2.81	1641052.21	14554751.90	40°04'36.997"N	104°59'51.821"W	0.71	
896.00	4.530	257.820	895.75	2.32	-2.32	-7.93	1641047.10	14554750.86	40°04'36.986"N	104°59'51.887"W	2.94	
991.00	5.270	263.710	990.41	3.59	-3.59	-15.94	1641039.09	14554749.60	40°04'36.974"N	104°59'51.990"W	0.94	
1086.00	6.150	270.120	1084.93	4.06	-4.05	-25.36	1641029.67	14554749.13	40°04'36.969"N	104°59'52.111"W	1.14	
1181.00	6.770	275.480	1179.33	3.52	-3.51	-36.03	1641019.01	14554749.67	40°04'36.975"N	104°59'52.248"W	0.91	
1276.00	9.490	276.190	1273.37	2.15	-2.13	-49.39	1641005.66	14554751.05	40°04'36.988"N	104°59'52.420"W	2.87	
1371.00	10.810	271.620	1366.88	1.06	-1.03	-66.08	1640988.97	14554752.15	40°04'36.999"N	104°59'52.635"W	1.63	
1466.00	12.570	288.010	1459.91	1.17	-1.14	-85.32	1640969.74	14554752.04	40°04'36.998"N	104°59'52.882"W	2.01	
1561.00	13.050	263.970	1552.54	2.66	-2.63	-106.32	1640948.75	14554750.55	40°04'36.983"N	104°59'53.152"W	1.07	
1656.00	13.540	261.950	1645.00	5.36	-5.31	-127.99	1640927.08	14554747.87	40°04'36.957"N	104°59'53.431"W	0.71	
1751.00	13.840	262.120	1737.30	8.48	-8.43	-150.26	1640904.83	14554744.76	40°04'36.926"N	104°59'53.718"W	0.32	
1834.00	15.120	262.120	1817.66	11.33	-11.27	-170.82	1640884.28	14554741.91	40°04'36.898"N	104°59'53.982"W	1.54	LAST SURFACE MWD+IFR1 SURVEY
1886.00	15.000	263.040	1867.88	13.08	-13.02	-184.22	1640870.88	14554740.17	40°04'36.881"N	104°59'54.155"W	0.51	FIRST BHGE MWD+IFR1+MSA SURVEY
1975.00	14.960	263.000	1953.85	15.88	-15.81	-207.05	1640848.06	14554737.37	40°04'36.853"N	104°59'54.448"W	0.05	
2065.00	14.950	264.150	2040.80	18.49	-18.41	-230.13	1640824.99	14554734.77	40°04'36.827"N	104°59'54.745"W	0.33	
2154.00	15.030	265.960	2126.77	20.48	-20.39	-253.06	1640802.07	14554732.79	40°04'36.808"N	104°59'55.040"W	0.53	
2244.00	15.150	266.920	2213.67	21.94	-21.85	-276.44	1640778.69	14554731.34	40°04'36.793"N	104°59'55.341"W	0.31	
2333.00	15.180	263.540	2299.57	23.89	-23.78	-299.64	1640755.51	14554729.40	40°04'36.774"N	104°59'55.639"W	0.99	
2423.00	15.070	264.790	2386.46	26.28	-26.17	-323.00	1640732.16	14554727.01	40°04'36.751"N	104°59'55.940"W	0.38	
2513.00	15.060	265.670	2473.36	28.24	-28.12	-346.31	1640708.86	14554725.07	40°04'36.731"N	104°59'56.240"W	0.25	
2602.00	15.140	261.850	2559.29	30.77	-30.64	-369.34	1640685.83	14554722.55	40°04'36.706"N	104°59'56.536"W	1.12	
2692.00	15.100	254.270	2646.19	35.62	-35.48	-392.26	1640662.92	14554717.70	40°04'36.659"N	104°59'56.831"W	2.20	
2781.00	15.050	250.170	2732.12	42.69	-42.55	-414.29	1640640.90	14554710.64	40°04'36.589"N	104°59'57.114"W	1.20	
2871.00	14.970	244.120	2819.06	51.74	-51.58	-435.74	1640619.46	14554701.61	40°04'36.499"N	104°59'57.390"W	1.74	
2960.00	14.540	241.260	2905.13	62.13	-61.97	-455.88	1640599.33	14554691.22	40°04'36.397"N	104°59'57.649"W	0.95	
3050.00	13.540	246.910	2992.44	71.70	-71.54	-475.48	1640579.74	14554681.66	40°04'36.302"N	104°59'57.901"W	1.88	
3140.00	14.940	251.350	3079.68	79.55	-79.38	-496.16	1640559.06	14554673.82	40°04'36.225"N	104°59'58.167"W	1.97	
3229.00	15.970	249.750	3165.46	87.47	-87.29	-518.52	1640536.71	14554665.92	40°04'36.147"N	104°59'58.455"W	1.25	
3319.00	15.440	247.010	3252.10	96.44	-96.25	-541.17	1640514.08	14554656.96	40°04'36.058"N	104°59'58.746"W	1.01	
3408.00	15.820	245.970	3337.81	106.02	-105.82	-563.15	1640492.10	14554647.39	40°04'35.963"N	104°59'59.029"W	0.53	
3497.00	14.720	244.870	3423.66	115.76	-115.56	-584.47	1640470.79	14554637.65	40°04'35.867"N	104°59'59.303"W	1.28	
3587.00	14.430	248.840	3510.77	124.68	-124.46	-605.28	1640449.99	14554628.75	40°04'35.779"N	104°59'59.571"W	1.16	
3676.00	15.900	244.020	3596.67	134.03	-133.81	-626.58	1640428.70	14554619.41	40°04'35.687"N	104°59'59.845"W	2.17	
3766.00	15.050	239.610	3683.41	145.35	-145.12	-647.75	1640407.54	14554608.10	40°04'35.575"N	105°00'00.117"W	1.61	
3855.00	14.950	251.720	3769.40	154.80	-154.57	-668.62	1640386.68	14554598.66	40°04'35.482"N	105°00'00.386"W	3.52	
3945.00	14.120	264.960	3856.54	159.42	-159.18	-690.59	1640364.72	14554594.05	40°04'35.436"N	105°00'00.668"W	3.80	

REFERENCE WELLPATH IDENTIFICATION			
Operator	KERR-MCGEE OIL & GAS ONSHORE LP (WA)	Slot	SLOT#36 MC 3-5HZ (1427'FSL & 342'FWL,SEC.03)
Area	COLORADO	Well	MC 3-5HZ
Field	WELD COUNTY (UTM/TRUE NORTH)	Wellbore	MC 3-5HZ AWB
Facility	SEC.03-T1N-R68W		

WELLPATH DATA (218 stations) † = interpolated/extrapolated station												
MD [ft]	Inclination [°]	Azimuth [°]	TVD [ft]	Vert Sect [ft]	North [ft]	East [ft]	Grid East [US ft]	Grid North [US ft]	Latitude	Longitude	DLS [°/100ft]	Comments
4034.00	15.750	274.560	3942.55	159.42	-159.17	-713.45	1640341.87	14554594.06	40°04'35.436"N	105°00'00.963"W	3.32	
4123.00	15.790	276.650	4028.20	157.07	-156.81	-737.51	1640317.81	14554596.42	40°04'35.459"N	105°00'01.272"W	0.64	
4213.00	15.860	274.740	4114.79	154.64	-154.37	-761.93	1640293.40	14554598.85	40°04'35.484"N	105°00'01.586"W	0.58	
4302.00	15.890	272.880	4200.39	153.03	-152.76	-786.22	1640269.12	14554600.47	40°04'35.500"N	105°00'01.899"W	0.57	
4392.00	15.830	267.970	4286.97	152.86	-152.57	-810.79	1640244.56	14554600.65	40°04'35.501"N	105°00'02.215"W	1.49	
4481.00	15.680	263.480	4372.63	154.66	-154.37	-834.88	1640220.49	14554598.85	40°04'35.484"N	105°00'02.525"W	1.38	
4570.00	13.420	267.480	4458.77	156.49	-156.19	-857.15	1640198.23	14554597.03	40°04'35.466"N	105°00'02.811"W	2.78	
4660.00	15.200	263.590	4545.98	158.27	-157.96	-879.31	1640176.08	14554595.26	40°04'35.448"N	105°00'03.096"W	2.25	
4749.00	15.830	253.090	4631.75	163.11	-162.80	-902.52	1640152.87	14554590.43	40°04'35.400"N	105°00'03.395"W	3.23	
4839.00	16.220	245.930	4718.26	171.82	-171.50	-925.74	1640129.66	14554581.73	40°04'35.314"N	105°00'03.694"W	2.24	
4928.00	16.310	243.580	4803.70	182.46	-182.13	-948.29	1640107.13	14554571.10	40°04'35.209"N	105°00'03.984"W	0.75	
5018.00	16.100	242.600	4890.13	193.83	-193.49	-970.68	1640084.74	14554559.74	40°04'35.097"N	105°00'04.272"W	0.38	
5107.00	16.230	246.090	4975.61	204.56	-204.21	-993.01	1640062.42	14554549.02	40°04'34.991"N	105°00'04.559"W	1.10	
5196.00	16.230	245.390	5061.06	214.79	-214.43	-1015.69	1640039.75	14554538.81	40°04'34.890"N	105°00'04.851"W	0.22	
5286.00	14.090	242.210	5147.93	225.14	-224.78	-1036.82	1640018.63	14554528.46	40°04'34.788"N	105°00'05.122"W	2.55	
5376.00	13.030	249.750	5235.42	233.77	-233.40	-1056.03	1639999.43	14554519.85	40°04'34.702"N	105°00'05.370"W	2.29	
5465.00	10.530	267.940	5322.57	237.54	-237.17	-1073.58	1639981.89	14554516.08	40°04'34.665"N	105°00'05.595"W	5.00	
5554.00	9.750	279.130	5410.19	236.64	-236.26	-1089.15	1639966.32	14554516.98	40°04'34.674"N	105°00'05.796"W	2.38	
5644.00	7.730	282.490	5499.14	234.13	-233.75	-1102.58	1639952.89	14554519.50	40°04'34.699"N	105°00'05.968"W	2.31	
5733.00	6.400	295.460	5587.47	230.71	-230.32	-1112.91	1639942.57	14554522.93	40°04'34.733"N	105°00'06.101"W	2.32	
5823.00	5.110	302.660	5677.01	226.39	-226.00	-1120.81	1639934.67	14554527.25	40°04'34.776"N	105°00'06.203"W	1.64	
5913.00	2.590	292.610	5766.81	223.45	-223.05	-1126.06	1639929.42	14554530.19	40°04'34.805"N	105°00'06.270"W	2.89	
6002.00	1.760	287.580	5855.74	222.26	-221.87	-1129.22	1639926.26	14554531.37	40°04'34.816"N	105°00'06.311"W	0.96	
6092.00	0.860	295.220	5945.72	221.56	-221.16	-1131.15	1639924.34	14554532.08	40°04'34.823"N	105°00'06.336"W	1.02	
6181.00	0.310	347.250	6034.71	221.04	-220.64	-1131.81	1639923.68	14554532.60	40°04'34.829"N	105°00'06.344"W	0.80	
6271.00	1.240	303.040	6124.70	220.27	-219.87	-1132.68	1639922.81	14554533.37	40°04'34.836"N	105°00'06.356"W	1.16	
6360.00	1.140	251.780	6213.69	220.02	-219.63	-1134.33	1639921.16	14554533.61	40°04'34.839"N	105°00'06.377"W	1.16	
6450.00	0.120	339.260	6303.68	220.21	-219.82	-1135.21	1639920.28	14554533.42	40°04'34.837"N	105°00'06.388"W	1.27	
6539.00	0.040	261.360	6392.68	220.13	-219.74	-1135.27	1639920.21	14554533.51	40°04'34.837"N	105°00'06.389"W	0.13	
6629.00	0.170	319.970	6482.68	220.03	-219.64	-1135.39	1639920.10	14554533.60	40°04'34.838"N	105°00'06.390"W	0.17	
6719.00	0.040	45.430	6572.68	219.91	-219.51	-1135.45	1639920.03	14554533.73	40°04'34.840"N	105°00'06.391"W	0.19	
6808.00	0.150	308.410	6661.68	219.82	-219.42	-1135.52	1639919.96	14554533.82	40°04'34.841"N	105°00'06.392"W	0.18	
6987.00	0.070	351.470	6840.68	219.56	-219.17	-1135.72	1639919.77	14554534.07	40°04'34.843"N	105°00'06.395"W	0.06	
7077.00	0.100	351.380	6930.68	219.43	-219.03	-1135.74	1639919.75	14554534.21	40°04'34.844"N	105°00'06.395"W	0.03	
7166.00	0.110	254.940	7019.68	219.38	-218.98	-1135.84	1639919.65	14554534.26	40°04'34.845"N	105°00'06.396"W	0.18	
7256.00	9.130	172.970	7109.30	226.50	-226.10	-1135.04	1639920.44	14554527.14	40°04'34.775"N	105°00'06.386"W	10.13	
7346.00	17.700	172.640	7196.76	247.19	-246.80	-1132.41	1639923.07	14554506.45	40°04'34.570"N	105°00'06.352"W	9.52	
7435.00	25.300	176.280	7279.51	279.64	-279.24	-1129.44	1639926.05	14554474.02	40°04'34.249"N	105°00'06.314"W	8.67	
7525.00	34.160	182.290	7357.60	324.17	-323.78	-1129.20	1639926.28	14554429.50	40°04'33.809"N	105°00'06.311"W	10.38	
7590.00†	40.878	183.035	7409.13	363.69	-363.30	-1131.06	1639924.43	14554390.00	40°04'33.419"N	105°00'06.335"W	10.36	KOP
7614.00	43.360	183.260	7426.93	379.76	-379.37	-1131.94	1639923.55	14554373.94	40°04'33.260"N	105°00'06.346"W	10.36	
7704.00	52.300	182.120	7487.29	446.33	-445.93	-1135.02	1639920.47	14554307.40	40°04'32.602"N	105°00'06.386"W	9.98	
7793.00	61.010	178.580	7536.17	520.59	-520.19	-1135.36	1639920.13	14554233.17	40°04'31.868"N	105°00'06.390"W	10.33	
7831.00†	64.801	178.259	7553.48	554.40	-554.00	-1134.43	1639921.07	14554199.38	40°04'31.534"N	105°00'06.378"W	10.00	ENTER LANDBOX (873'FSL & 793'FEL,SEC.04) 40.0754262 -105.0017716
7883.00	69.990	177.850	7573.46	602.36	-601.96	-1132.80	1639922.70	14554151.43	40°04'31.060"N	105°00'06.357"W	10.00	

Actual Wellpath Report

MC 3-5HZ AWP

Page 4 of 8

REFERENCE WELLPATH IDENTIFICATION

Operator	KERR-MCGEE OIL & GAS ONSHORE LP (WA)	Slot	SLOT#36 MC 3-5HZ (1427'FSL & 342'FWL,SEC.03)
Area	COLORADO	Well	MC 3-5HZ
Field	WELD COUNTY (UTM/TRUE NORTH)	Wellbore	MC 3-5HZ AWP
Facility	SEC.03-T1N-R68W		

WELLPATH DATA (218 stations) † = interpolated/extrapolated station

MD [ft]	Inclination [°]	Azimuth [°]	TVD [ft]	Vert Sect [ft]	North [ft]	East [ft]	Grid East [US ft]	Grid North [US ft]	Latitude	Longitude	DLS °/100ft	Comments
7973.00	79.480	178.680	7597.13	689.04	-688.65	-1130.18	1639925.31	14554064.78	40°04'30.204"N	105°00'06.323"W	10.58	
8062.00	89.660	179.770	7605.54	777.51	-777.12	-1128.99	1639926.50	14553976.34	40°04'29.329"N	105°00'06.308"W	11.50	LANDING (650'FSL & 787'FEL,SEC.04) 40.0748137 -105.0017522
8152.00	90.150	179.920	7605.69	867.51	-867.12	-1128.75	1639926.75	14553886.38	40°04'28.440"N	105°00'06.305"W	0.57	
8241.00	90.150	179.230	7605.46	956.51	-956.12	-1128.09	1639927.41	14553797.42	40°04'27.560"N	105°00'06.296"W	0.78	
8331.00	90.180	178.610	7605.20	1046.49	-1046.10	-1126.39	1639929.11	14553707.47	40°04'26.671"N	105°00'06.274"W	0.69	
8421.00	90.060	178.120	7605.01	1136.46	-1136.06	-1123.83	1639931.68	14553617.55	40°04'25.782"N	105°00'06.241"W	0.56	
8510.00	90.030	178.280	7604.94	1225.41	-1225.02	-1121.03	1639934.48	14553528.63	40°04'24.903"N	105°00'06.205"W	0.18	
8600.00	90.090	178.710	7604.84	1315.38	-1314.99	-1118.67	1639936.84	14553438.69	40°04'24.014"N	105°00'06.175"W	0.48	
8689.00	90.060	178.420	7604.73	1404.35	-1403.96	-1116.44	1639939.07	14553349.76	40°04'23.135"N	105°00'06.146"W	0.33	
8779.00	90.340	178.120	7604.41	1494.31	-1493.92	-1113.72	1639941.79	14553259.84	40°04'22.246"N	105°00'06.111"W	0.46	
8868.00	90.370	178.360	7603.86	1583.26	-1582.87	-1110.99	1639944.52	14553170.92	40°04'21.367"N	105°00'06.076"W	0.27	
8958.00	90.400	179.020	7603.26	1673.23	-1672.85	-1108.93	1639946.58	14553080.98	40°04'20.478"N	105°00'06.049"W	0.73	
9047.00	90.460	179.390	7602.59	1762.22	-1761.84	-1107.70	1639947.82	14552992.02	40°04'19.598"N	105°00'06.033"W	0.42	
9137.00	90.550	179.550	7601.80	1852.22	-1851.83	-1106.86	1639948.65	14552902.07	40°04'18.709"N	105°00'06.023"W	0.20	
9170.00†	90.528	179.598	7601.49	1885.21	-1884.83	-1106.62	1639948.90	14552869.08	40°04'18.383"N	105°00'06.019"W	0.16	CROSS SETBACK HEEL (458'FNL & 765'FEL,SEC.09) 40.0717730 -105.0016720
9226.00	90.490	179.680	7600.99	1941.21	-1940.82	-1106.27	1639949.25	14552813.11	40°04'17.829"N	105°00'06.015"W	0.16	
9316.00	90.490	180.540	7600.22	2031.21	-2030.82	-1106.44	1639949.08	14552723.15	40°04'16.940"N	105°00'06.017"W	0.96	
9405.00	90.430	180.400	7599.50	2120.20	-2119.81	-1107.17	1639948.36	14552634.19	40°04'16.061"N	105°00'06.026"W	0.17	
9495.00	90.370	181.320	7598.88	2210.19	-2209.80	-1108.52	1639947.01	14552544.24	40°04'15.171"N	105°00'06.044"W	1.02	
9584.00	90.280	182.430	7598.37	2299.14	-2298.75	-1111.43	1639944.10	14552455.33	40°04'14.292"N	105°00'06.081"W	1.25	
9673.00	90.340	183.060	7597.89	2388.04	-2387.65	-1115.69	1639939.84	14552366.47	40°04'13.414"N	105°00'06.136"W	0.71	
9763.00	90.340	183.140	7597.35	2477.90	-2477.51	-1120.56	1639934.98	14552276.64	40°04'12.526"N	105°00'06.198"W	0.09	
9852.00	90.310	183.660	7596.85	2566.75	-2566.35	-1125.84	1639929.70	14552187.83	40°04'11.648"N	105°00'06.266"W	0.59	
9942.00	90.370	183.860	7596.32	2656.55	-2656.16	-1131.74	1639923.81	14552098.06	40°04'10.760"N	105°00'06.342"W	0.23	
10031.00	90.310	183.370	7595.79	2745.38	-2744.98	-1137.35	1639918.20	14552009.28	40°04'09.883"N	105°00'06.414"W	0.55	
10121.00	90.310	182.870	7595.30	2835.24	-2834.84	-1142.25	1639913.31	14551919.45	40°04'08.994"N	105°00'06.477"W	0.56	
10211.00	90.310	183.030	7594.81	2925.12	-2924.72	-1146.88	1639908.68	14551829.60	40°04'08.106"N	105°00'06.537"W	0.18	
10300.00	90.310	183.130	7594.33	3014.00	-3013.59	-1151.66	1639903.90	14551740.77	40°04'07.228"N	105°00'06.598"W	0.11	
10390.00	90.310	182.500	7593.85	3103.89	-3103.48	-1156.08	1639899.49	14551650.92	40°04'06.340"N	105°00'06.655"W	0.70	
10479.00	90.340	182.180	7593.34	3192.81	-3192.41	-1159.72	1639895.86	14551562.03	40°04'05.461"N	105°00'06.702"W	0.36	
10568.00	90.370	180.890	7592.79	3281.78	-3281.37	-1162.10	1639893.47	14551473.10	40°04'04.582"N	105°00'06.732"W	1.45	
10658.00	90.340	180.070	7592.23	3371.77	-3371.37	-1162.86	1639892.72	14551383.14	40°04'03.692"N	105°00'06.742"W	0.91	
10748.00	90.460	179.630	7591.60	3461.77	-3461.36	-1162.62	1639892.96	14551293.18	40°04'02.803"N	105°00'06.739"W	0.51	
10837.00	90.180	179.330	7591.11	3550.76	-3550.36	-1161.81	1639893.77	14551204.22	40°04'01.924"N	105°00'06.728"W	0.46	
10927.00	90.150	179.480	7590.85	3640.76	-3640.35	-1160.88	1639894.71	14551114.26	40°04'01.034"N	105°00'06.716"W	0.17	
11016.00	90.090	178.270	7590.66	3729.74	-3729.33	-1159.13	1639896.46	14551025.32	40°04'00.155"N	105°00'06.694"W	1.36	
11106.00	90.180	178.290	7590.45	3819.70	-3819.29	-1156.43	1639899.16	14550935.39	40°03'59.266"N	105°00'06.659"W	0.10	
11195.00	89.970	179.540	7590.33	3908.68	-3908.28	-1154.74	1639900.85	14550846.45	40°03'58.387"N	105°00'06.637"W	1.42	
11285.00	90.030	179.790	7590.33	3998.68	-3998.27	-1154.22	1639901.37	14550756.48	40°03'57.497"N	105°00'06.630"W	0.29	
11374.00	90.060	180.300	7590.26	4087.68	-4087.27	-1154.29	1639901.31	14550667.52	40°03'56.618"N	105°00'06.631"W	0.57	
11464.00	90.520	181.420	7589.81	4177.66	-4177.26	-1155.64	1639899.96	14550577.57	40°03'55.728"N	105°00'06.649"W	1.35	
11553.00	90.460	182.120	7589.05	4266.62	-4266.21	-1158.39	1639897.21	14550488.65	40°03'54.849"N	105°00'06.684"W	0.79	
11643.00	90.280	182.160	7588.46	4356.56	-4356.15	-1161.75	1639893.86	14550398.75	40°03'53.961"N	105°00'06.727"W	0.20	
11732.00	90.680	181.320	7587.72	4445.51	-4445.11	-1164.45	1639891.16	14550309.83	40°03'53.082"N	105°00'06.762"W	1.05	
11822.00	90.490	181.420	7586.80	4535.48	-4535.07	-1166.60	1639889.01	14550219.90	40°03'52.192"N	105°00'06.789"W	0.24	

REFERENCE WELLPATH IDENTIFICATION

Operator	KERR-MCGEE OIL & GAS ONSHORE LP (WA)	Slot	SLOT#36 MC 3-5HZ (1427'FSL & 342'FWL,SEC.03)
Area	COLORADO	Well	MC 3-5HZ
Field	WELD COUNTY (UTM/TRUE NORTH)	Wellbore	MC 3-5HZ AWB
Facility	SEC.03-T1N-R68W		

WELLPATH DATA (218 stations)

MD [ft]	Inclination [°]	Azimuth [°]	TVD [ft]	Vert Sect [ft]	North [ft]	East [ft]	Grid East [US ft]	Grid North [US ft]	Latitude	Longitude	DLS ["/100ft]	Comments
11911.00	90.590	181.410	7585.96	4624.45	-4624.04	-1168.80	1639886.81	14550130.97	40°03'51.313"N	105°00'06.818"W	0.11	
12001.00	90.400	181.690	7585.18	4714.42	-4714.01	-1171.23	1639884.38	14550041.04	40°03'50.424"N	105°00'06.849"W	0.38	
12091.00	90.150	180.840	7584.75	4804.39	-4803.98	-1173.22	1639882.40	14549951.10	40°03'49.535"N	105°00'06.874"W	0.98	
12180.00	90.430	180.030	7584.30	4893.39	-4892.98	-1173.90	1639881.73	14549862.14	40°03'48.656"N	105°00'06.883"W	0.96	
12269.00	90.340	178.810	7583.70	4982.38	-4981.97	-1173.00	1639882.63	14549773.18	40°03'47.776"N	105°00'06.871"W	1.37	
12359.00	90.150	179.000	7583.32	5072.36	-5071.95	-1171.28	1639884.35	14549683.24	40°03'46.887"N	105°00'06.849"W	0.30	
12448.00	90.060	178.730	7583.16	5161.34	-5160.94	-1169.51	1639886.11	14549594.29	40°03'46.008"N	105°00'06.826"W	0.32	
12538.00	90.460	181.470	7582.75	5251.33	-5250.93	-1169.67	1639885.96	14549504.34	40°03'45.118"N	105°00'06.828"W	3.08	
12628.00	90.340	184.420	7582.12	5341.20	-5340.79	-1174.29	1639881.34	14549414.50	40°03'44.230"N	105°00'06.888"W	3.28	
12717.00	90.340	183.770	7581.59	5429.98	-5429.57	-1180.65	1639874.99	14549325.77	40°03'43.353"N	105°00'06.969"W	0.73	
12807.00	90.150	183.380	7581.21	5519.80	-5519.39	-1186.26	1639869.38	14549235.98	40°03'42.465"N	105°00'07.042"W	0.48	
12896.00	90.150	182.820	7580.97	5608.67	-5608.26	-1191.07	1639864.57	14549147.15	40°03'41.587"N	105°00'07.103"W	0.63	
12986.00	90.400	182.300	7580.54	5698.58	-5698.17	-1195.09	1639860.56	14549057.27	40°03'40.698"N	105°00'07.155"W	0.64	
13075.00	90.220	181.860	7580.06	5787.52	-5787.11	-1198.32	1639857.33	14548968.37	40°03'39.820"N	105°00'07.197"W	0.53	
13164.00	90.280	181.540	7579.67	5876.49	-5876.07	-1200.96	1639854.70	14548879.45	40°03'38.940"N	105°00'07.230"W	0.37	
13254.00	90.180	180.770	7579.31	5966.47	-5966.05	-1202.78	1639852.88	14548789.50	40°03'38.051"N	105°00'07.254"W	0.86	
13343.00	89.320	181.580	7579.70	6055.45	-6055.03	-1204.60	1639851.06	14548700.56	40°03'37.172"N	105°00'07.277"W	1.33	
13522.00	89.350	185.490	7581.78	6234.06	-6233.64	-1215.64	1639840.04	14548522.02	40°03'35.407"N	105°00'07.419"W	2.18	
13612.00	89.380	185.570	7582.77	6323.64	-6323.21	-1224.31	1639831.37	14548432.48	40°03'34.522"N	105°00'07.530"W	0.09	
13701.00	89.290	185.140	7583.81	6412.25	-6411.82	-1232.61	1639823.07	14548343.91	40°03'33.646"N	105°00'07.637"W	0.49	
13791.00	89.080	184.190	7585.09	6501.94	-6501.51	-1239.93	1639815.76	14548254.25	40°03'32.760"N	105°00'07.731"W	1.08	
13881.00	89.050	181.920	7586.56	6591.80	-6591.37	-1244.73	1639810.97	14548164.43	40°03'31.872"N	105°00'07.793"W	2.52	
13970.00	89.080	179.510	7588.01	6680.77	-6680.34	-1245.84	1639809.86	14548075.49	40°03'30.992"N	105°00'07.807"W	2.71	
14059.00	89.320	178.180	7589.25	6769.75	-6769.31	-1244.05	1639811.65	14547986.56	40°03'30.113"N	105°00'07.784"W	1.52	
14149.00	89.110	177.600	7590.48	6859.67	-6859.24	-1240.73	1639814.97	14547896.67	40°03'29.224"N	105°00'07.741"W	0.69	
14238.00	89.260	177.640	7591.75	6948.59	-6948.16	-1237.04	1639818.66	14547807.79	40°03'28.346"N	105°00'07.694"W	0.17	
14328.00	89.260	178.350	7592.91	7038.52	-7038.09	-1233.89	1639821.81	14547717.89	40°03'27.457"N	105°00'07.653"W	0.79	
14417.00	89.200	179.990	7594.11	7127.50	-7127.07	-1232.60	1639823.10	14547628.94	40°03'26.578"N	105°00'07.637"W	1.84	
14507.00	89.170	179.800	7595.39	7217.49	-7217.06	-1232.43	1639823.27	14547538.99	40°03'25.688"N	105°00'07.634"W	0.21	
14596.00	89.170	180.090	7596.68	7306.48	-7306.05	-1232.35	1639823.36	14547450.03	40°03'24.809"N	105°00'07.633"W	0.33	
14686.00	89.170	180.910	7597.98	7396.47	-7396.04	-1233.13	1639822.58	14547360.08	40°03'23.920"N	105°00'07.643"W	0.91	
14775.00	89.230	180.530	7599.22	7485.45	-7485.02	-1234.25	1639821.46	14547271.14	40°03'23.040"N	105°00'07.658"W	0.43	
14864.00	89.170	181.150	7600.47	7574.44	-7574.01	-1235.56	1639820.16	14547182.19	40°03'22.161"N	105°00'07.674"W	0.70	
14954.00	89.140	181.840	7601.79	7664.40	-7663.96	-1237.90	1639817.81	14547092.27	40°03'21.272"N	105°00'07.704"W	0.77	
15043.00	89.690	182.300	7602.70	7753.33	-7752.90	-1241.12	1639814.60	14547003.37	40°03'20.393"N	105°00'07.746"W	0.81	
15133.00	89.660	181.980	7603.21	7843.27	-7842.84	-1244.48	1639811.25	14546913.47	40°03'19.504"N	105°00'07.789"W	0.36	
15223.00	89.570	181.360	7603.82	7933.23	-7932.80	-1247.10	1639808.63	14546823.54	40°03'18.615"N	105°00'07.823"W	0.70	
15312.00	89.690	180.850	7604.39	8022.21	-8021.78	-1248.82	1639806.91	14546734.60	40°03'17.736"N	105°00'07.845"W	0.59	
15402.00	89.540	179.990	7605.00	8112.21	-8111.77	-1249.48	1639806.26	14546644.64	40°03'16.847"N	105°00'07.853"W	0.97	
15491.00	89.600	179.520	7605.66	8201.20	-8200.77	-1249.10	1639806.64	14546555.68	40°03'15.967"N	105°00'07.848"W	0.53	
15580.00	89.600	178.620	7606.29	8290.19	-8289.75	-1247.65	1639808.09	14546466.73	40°03'15.088"N	105°00'07.829"W	1.01	
15670.00	89.660	178.430	7606.87	8380.16	-8379.72	-1245.34	1639810.40	14546376.80	40°03'14.199"N	105°00'07.800"W	0.22	
15759.00	89.660	177.870	7607.40	8469.11	-8468.67	-1242.46	1639813.28	14546287.88	40°03'13.320"N	105°00'07.763"W	0.63	
15849.00	89.450	176.870	7608.09	8559.01	-8558.57	-1238.33	1639817.41	14546198.02	40°03'12.431"N	105°00'07.709"W	1.14	
15938.00	89.350	177.280	7609.03	8647.88	-8647.45	-1233.79	1639821.95	14546109.17	40°03'11.553"N	105°00'07.651"W	0.47	

Actual Wellpath Report

MC 3-5HZ AWP

Page 6 of 8

REFERENCE WELLPATH IDENTIFICATION			
Operator	KERR-MCGEE OIL & GAS ONSHORE LP (WA)	Slot	SLOT#36 MC 3-5HZ (1427'FSL & 342'FWL,SEC.03)
Area	COLORADO	Well	MC 3-5HZ
Field	WELD COUNTY (UTM/TRUE NORTH)	Wellbore	MC 3-5HZ AWB
Facility	SEC.03-T1N-R68W		

WELLPATH DATA (218 stations) † = interpolated/extrapolated station												
MD [ft]	Inclination [°]	Azimuth [°]	TVD [ft]	Vert Sect [ft]	North [ft]	East [ft]	Grid East [US ft]	Grid North [US ft]	Latitude	Longitude	DLS °/100ft	Comments
16028.00	89.570	177.830	7609.87	8737.80	-8737.37	-1229.95	1639825.79	14546019.30	40°03'10.664"N	105°00'07.601"W	0.66	
16117.00	90.310	178.280	7609.97	8826.74	-8826.32	-1226.93	1639828.81	14545930.38	40°03'09.785"N	105°00'07.563"W	0.97	
16207.00	90.830	178.730	7609.07	8916.71	-8916.28	-1224.59	1639831.16	14545840.46	40°03'08.896"N	105°00'07.532"W	0.76	
16296.00	90.980	179.170	7607.67	9005.68	-9005.25	-1222.95	1639832.79	14545751.52	40°03'08.017"N	105°00'07.511"W	0.52	
16386.00	90.710	179.280	7606.34	9095.66	-9095.24	-1221.74	1639834.01	14545661.57	40°03'07.128"N	105°00'07.496"W	0.32	
16475.00	90.860	178.410	7605.12	9184.63	-9184.21	-1219.94	1639835.81	14545572.63	40°03'06.249"N	105°00'07.472"W	0.99	
16565.00	90.860	178.270	7603.77	9274.58	-9274.16	-1217.34	1639838.42	14545482.72	40°03'05.360"N	105°00'07.439"W	0.16	
16654.00	90.920	177.400	7602.39	9363.51	-9363.08	-1213.97	1639841.78	14545393.83	40°03'04.481"N	105°00'07.396"W	0.98	
16744.00	92.890	178.090	7599.40	9453.38	-9452.96	-1210.44	1639845.32	14545303.99	40°03'03.593"N	105°00'07.350"W	2.32	
16832.00	93.480	177.550	7594.51	9541.18	-9540.76	-1207.09	1639848.66	14545216.23	40°03'02.725"N	105°00'07.307"W	0.91	
16921.00	92.250	175.180	7590.06	9629.88	-9629.46	-1201.46	1639854.30	14545127.56	40°03'01.849"N	105°00'07.234"W	3.00	
17011.00	91.390	173.530	7587.20	9719.39	-9718.98	-1192.61	1639863.14	14545038.08	40°03'00.964"N	105°00'07.121"W	2.07	
17101.00	90.550	172.690	7585.67	9808.72	-9808.31	-1181.81	1639873.94	14544948.78	40°03'00.081"N	105°00'06.982"W	1.32	
17190.00	90.120	174.630	7585.15	9897.17	-9896.76	-1171.99	1639883.76	14544860.37	40°02'59.207"N	105°00'06.855"W	2.23	
17280.00	89.940	177.900	7585.11	9986.96	-9986.56	-1166.12	1639889.63	14544770.61	40°02'58.320"N	105°00'06.780"W	3.64	
17369.00	90.620	179.560	7584.67	10075.94	-10075.53	-1164.15	1639891.60	14544681.67	40°02'57.440"N	105°00'06.754"W	2.02	
17458.00	90.920	179.620	7583.48	10164.93	-10164.52	-1163.52	1639892.24	14544592.72	40°02'56.561"N	105°00'06.746"W	0.34	
17548.00	90.950	180.220	7582.01	10254.91	-10254.51	-1163.39	1639892.37	14544502.77	40°02'55.672"N	105°00'06.745"W	0.67	
17638.00	90.920	179.560	7580.54	10344.90	-10344.50	-1163.22	1639892.54	14544412.81	40°02'54.782"N	105°00'06.742"W	0.73	
17817.00	90.920	179.010	7577.66	10523.86	-10523.46	-1160.98	1639894.78	14544233.92	40°02'53.014"N	105°00'06.713"W	0.31	
17906.00	90.980	178.670	7576.19	10612.83	-10612.43	-1159.18	1639896.58	14544144.99	40°02'52.135"N	105°00'06.690"W	0.39	
17996.00	90.950	177.900	7574.67	10702.78	-10702.37	-1156.49	1639899.28	14544055.08	40°02'51.246"N	105°00'06.656"W	0.86	
18085.00	90.830	177.740	7573.29	10791.70	-10791.30	-1153.10	1639902.66	14543966.19	40°02'50.367"N	105°00'06.612"W	0.22	
18175.00	90.920	177.730	7571.92	10881.62	-10881.22	-1149.55	1639906.22	14543876.31	40°02'49.478"N	105°00'06.566"W	0.10	
18265.00	90.920	178.230	7570.47	10971.55	-10971.15	-1146.38	1639909.39	14543786.41	40°02'48.590"N	105°00'06.525"W	0.56	
18354.00	90.800	178.670	7569.14	11060.51	-11060.11	-1143.97	1639911.80	14543697.49	40°02'47.711"N	105°00'06.494"W	0.51	
18444.00	90.980	178.180	7567.74	11150.46	-11150.06	-1141.49	1639914.27	14543607.57	40°02'46.822"N	105°00'06.463"W	0.58	
18534.00	90.120	178.820	7566.87	11240.42	-11240.03	-1139.14	1639916.63	14543517.64	40°02'45.933"N	105°00'06.432"W	1.19	
18623.00	90.060	179.350	7566.73	11329.41	-11329.01	-1137.72	1639918.05	14543428.69	40°02'45.053"N	105°00'06.414"W	0.60	
18713.00	90.090	179.970	7566.62	11419.41	-11419.01	-1137.18	1639918.59	14543338.73	40°02'44.164"N	105°00'06.407"W	0.69	
18802.00	90.150	180.040	7566.43	11508.41	-11508.01	-1137.19	1639918.59	14543249.77	40°02'43.284"N	105°00'06.407"W	0.10	
18868.00†	90.172	179.101	7566.24	11574.41	-11574.01	-1136.70	1639919.08	14543183.80	40°02'42.632"N	105°00'06.401"W	1.42	CROSS SETBACK TOE (460'FSL & 726'FEL,SEC.16) 40.0451756 -105.0017779
18892.00	90.180	178.760	7566.17	11598.40	-11598.00	-1136.25	1639919.53	14543159.81	40°02'42.395"N	105°00'06.395"W	1.42	
18981.00	90.150	177.700	7565.91	11687.36	-11686.96	-1133.50	1639922.28	14543070.89	40°02'41.516"N	105°00'06.359"W	1.19	
19071.00	90.150	176.330	7565.68	11777.23	-11776.84	-1128.81	1639926.97	14542981.05	40°02'40.628"N	105°00'06.299"W	1.52	
19160.00	90.060	175.640	7565.52	11866.01	-11865.62	-1122.58	1639933.20	14542892.31	40°02'39.750"N	105°00'06.219"W	0.78	
19250.00	90.060	174.580	7565.42	11955.68	-11955.29	-1114.91	1639940.87	14542802.67	40°02'38.864"N	105°00'06.120"W	1.18	LAST BHGE MWD+IFR1+MSA SURVEY
19278.00	90.060	174.580	7565.39	11983.55	-11983.16	-1112.27	1639943.51	14542774.81	40°02'38.589"N	105°00'06.086"W	0.00	PTB (51'FSL & 701'FEL,SEC.16) 40.0440524 -105.0016906

HOLE & CASING SECTIONS - Ref Wellbore: MC 3-5HZ AWB Ref Wellpath: MC 3-5HZ AWP									
String/Diameter	Start MD [ft]	End MD [ft]	Interval [ft]	Start TVD [ft]	End TVD [ft]	Start N/S [ft]	Start E/W [ft]	End N/S [ft]	End E/W [ft]
9.625in Casing Surface	26.00	1874.00	1848.00	26.00	1856.29	0.00	0.00	-12.63	-181.13

REFERENCE WELLPATH IDENTIFICATION

Operator	KERR-MCGEE OIL & GAS ONSHORE LP (WA)	Slot	SLOT#36 MC 3-5HZ (1427'FSL & 342'FWL,SEC.03)
Area	COLORADO	Well	MC 3-5HZ
Field	WELD COUNTY (UTM/TRUE NORTH)	Wellbore	MC 3-5HZ AWB
Facility	SEC.03-T1N-R68W		

TARGETS

Name	TVD [ft]	North [ft]	East [ft]	Grid East [US ft]	Grid North [US ft]	Latitude	Longitude	Shape
SEC.09-T1N-R68W	26.00	0.36	-59.89	1640995.16	14554753.54	40°04'37.013"N	104°59'52.555"W	polygon
SEC.16-T1N-R68W	26.00	0.36	-59.89	1640995.16	14554753.54	40°04'37.013"N	104°59'52.555"W	polygon
MC 3-5HZ BHL REV-1(50'FSL & 726'FEL,SEC.16)	7575.00	-11984.04	-1136.75	1639919.04	14542773.93	40°02'38.580"N	105°00'06.401"W	point
MC 3-5HZ LANDBOX	7602.00	0.00	0.00	1641055.03	14554753.18	40°04'37.009"N	104°59'51.785"W	polygon
MC 3-5HZ SETBACK 1	7602.00	0.00	0.00	1641055.03	14554753.18	40°04'37.009"N	104°59'51.785"W	polygon
MC 3-5HZ SETBACK 2	7602.00	0.00	0.00	1641055.03	14554753.18	40°04'37.009"N	104°59'51.785"W	polygon
MC 3-5HZ HEEL REV-1(630'FSL & 788'FEL,SEC.04)	7608.00	-795.26	-1132.90	1639922.61	14553958.21	40°04'29.150"N	105°00'06.358"W	point

WELLPATH COMPOSITION - Ref Wellbore: MC 3-5HZ AWB Ref Wellpath: MC 3-5HZ AWP

Start MD [ft]	End MD [ft]	Positional Uncertainty Model	Log Name/Comment	Wellbore
26.00	1834.00	Custom APC_ISCWSA REV 2 MWD+IFR1 (approximation)	Custom APC ISCWSA Rev-2 MWD+IFR1 <134 - 1834>	MC 3-5HZ AWB
1834.00	19250.00	Custom APC_ISCWSA REV 2 MWD+IFR1+MSA (approximation)	BHGE Custom APC ISCWSA Rev-2 MWD+IFR1+MSA <1886 - 19250>	MC 3-5HZ AWB
19250.00	19278.00	Blind Drilling (std)	Projection to bit	MC 3-5HZ AWB

REFERENCE WELLPATH IDENTIFICATION

Operator	KERR-MCGEE OIL & GAS ONSHORE LP (WA)	Slot	SLOT#36 MC 3-5HZ (1427'FSL & 342'FWL,SEC.03)
Area	COLORADO	Well	MC 3-5HZ
Field	WELD COUNTY (UTM/TRUE NORTH)	Wellbore	MC 3-5HZ AWB
Facility	SEC.03-T1N-R68W		

WELLPATH COMMENTS

MD [ft]	Inclination [°]	Azimuth [°]	TVD [ft]	Comment
134.00	0.880	242.520	134.00	FIRST SURFACE MWD+IFR1 SURVEY
1834.00	15.120	262.120	1817.66	LAST SURFACE MWD+IFR1 SURVEY
1886.00	15.000	263.040	1867.88	FIRST BHGE MWD+IFR1+MSA SURVEY
7590.00	40.878	183.035	7409.13	KOP
7831.00	64.801	178.259	7553.48	ENTER LANDBOX (873'FSL & 793'FEL,SEC.04) 40.0754262 -105.0017716
8062.00	89.660	179.770	7605.54	LANDING (650'FSL & 787'FEL,SEC.04) 40.0748137 -105.0017522
9170.00	90.528	179.598	7601.49	CROSS SETBACK HEEL (458'FNL & 765'FEL,SEC.09) 40.0717730 -105.0016720
18868.00	90.172	179.101	7566.24	CROSS SETBACK TOE (460'FSL & 726'FEL,SEC.16) 40.0451756 -105.0017779
19250.00	90.060	174.580	7565.42	LAST BHGE MWD+IFR1+MSA SURVEY
19278.00	90.060	174.580	7565.39	PTB (51'FSL & 701'FEL,SEC.16) 40.0440524 -105.0016906