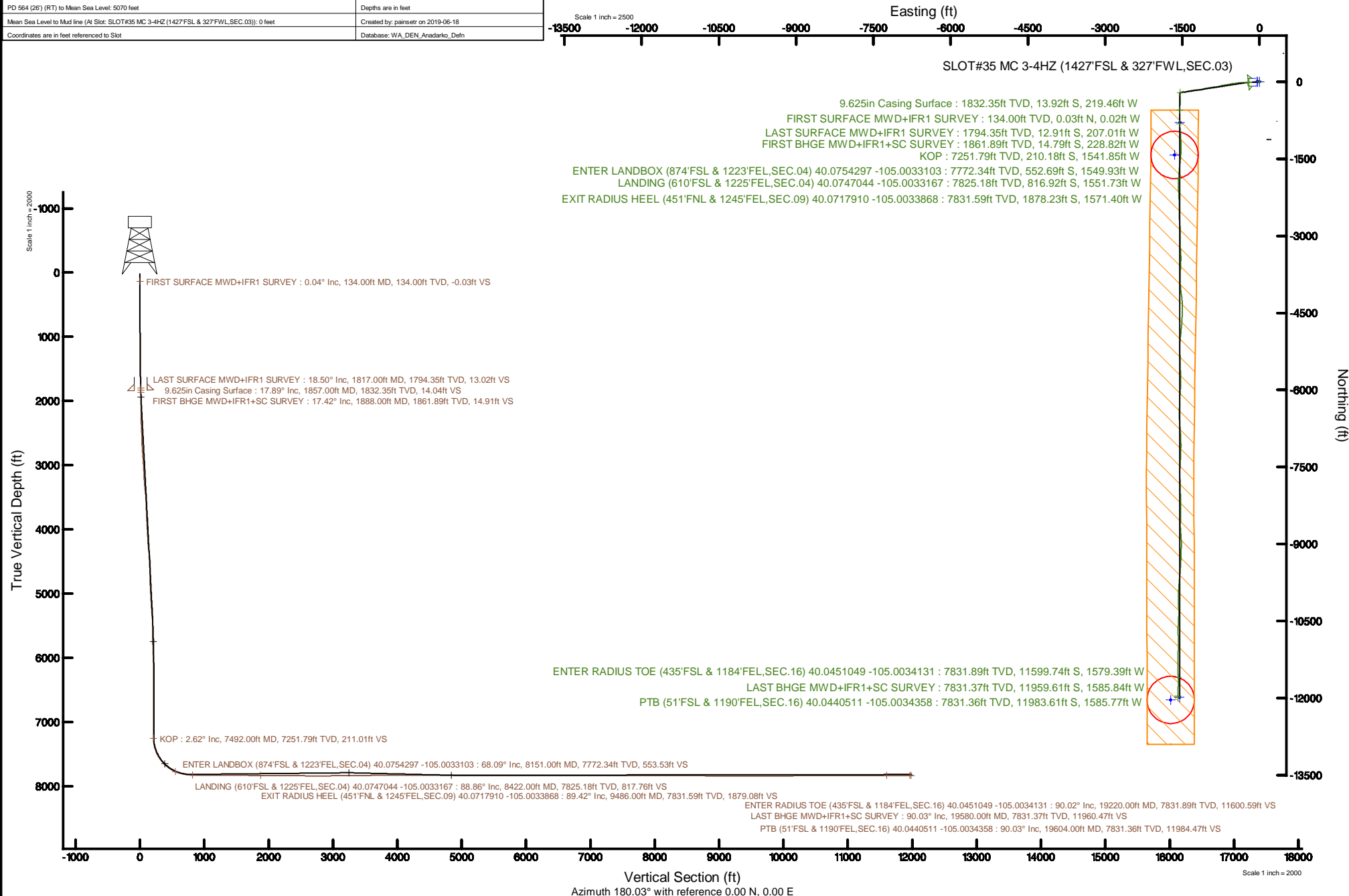


KERR-MCGEE OIL & GAS ONSHORE LP (WA)

Location: COLORADO Slot: SLOT#35 MC 3-4HZ (1427'FSL & 327'FWL,SEC.03)
 Field: WELD COUNTY (UTM/TRUE NORTH) Well: MC 3-4HZ
 Facility: SEC.03-T1N-R68W Wellbore: MC 3-4HZ PWB

Plot reference wellpath is MC 3-4HZ PWP Rev-A.0	Grid System: NAD83 / UTM Zone 13 North, US feet
True vertical depths are referenced to PD 564 (26) (RT)	North Reference: True north
Measured depths are referenced to PD 564 (26) (RT)	Scale: True distance
PD 564 (26) (RT) to Mean Sea Level: 5070 feet	Depths are in feet
Mean Sea Level to Mud line (At Slot: SLOT#35 MC 3-4HZ (1427'FSL & 327'FWL,SEC.03)): 0 feet	Created by: painsetr on 2019-06-18
Coordinates are in feet referenced to Slot	Database: WA_DEN, Anadarko, Deln



Actual Wellpath Report

MC 3-4HZ AWP

Page 1 of 8

REFERENCE WELLPATH IDENTIFICATION			
Operator	KERR-MCGEE OIL & GAS ONSHORE LP (WA)	Slot	SLOT#35 MC 3-4HZ (1427'FSL & 327'FWL,SEC.03)
Area	COLORADO	Well	MC 3-4HZ
Field	WELD COUNTY (UTM/TRUE NORTH)	Wellbore	MC 3-4HZ AWB
Facility	SEC.03-T1N-R68W		

REPORT SETUP INFORMATION			
Projection System	NAD83 / UTM Zone 13 North, US feet	Software System	WellArchitect@ 5.1
North Reference	True	User	Painsetr
Scale	0.999600	Report Generated	6/18/2019 at 10:34:44 AM
Convergence at slot	0.00°	Database/Source file	WA_DEN_Anadarko_Defn/MC_3-4HZ_AWP.xml

WELLPATH LOCATION						
	Local coordinates		Grid coordinates		Geographic coordinates	
	North[ft]	East[ft]	Easting[US ft]	Northing[US ft]	Latitude	Longitude
Slot Location	-277.94	-851.30	1641039.92	14554753.18	40°04'37.009"N	104°59'51.979"W
Facility Reference Pt			1641890.86	14555031.06	40°04'39.756"N	104°59'41.028"W
Field Reference Pt			1698235.31	14552047.82	40°04'09.600"N	104°47'36.000"W

WELLPATH DATUM			
Calculation method	Minimum curvature	PD 564 (26') (RT) to Facility Vertical Datum	5070.00ft
Horizontal Reference Pt	Slot	PD 564 (26') (RT) to Mean Sea Level	5070.00ft
Vertical Reference Pt	PD 564 (26') (RT)	PD 564 (26') (RT) to Mud Line at Slot (SLOT#35 MC 3-4HZ (1427'FSL & 327'FWL,SEC.03))	5070.00ft
MD Reference Pt	PD 564 (26') (RT)	Section Origin	N 0.00, E 0.00 ft
Field Vertical Reference	Mean Sea Level	Section Azimuth	180.03°

REFERENCE WELLPATH IDENTIFICATION			
Operator	KERR-MCGEE OIL & GAS ONSHORE LP (WA)	Slot	SLOT#35 MC 3-4HZ (1427'FSL & 327'FWL,SEC.03)
Area	COLORADO	Well	MC 3-4HZ
Field	WELD COUNTY (UTM/TRUE NORTH)	Wellbore	MC 3-4HZ AWB
Facility	SEC.03-T1N-R68W		

WELLPATH DATA (225 stations) † = interpolated/extrapolated station												Comments
MD [ft]	Inclination [°]	Azimuth [°]	TVD [ft]	Vert Sect [ft]	North [ft]	East [ft]	Grid East [US ft]	Grid North [US ft]	Latitude	Longitude	DLS [°/100ft]	
0.00†	0.000	321.190	0.00	0.00	0.00	0.00	1641039.92	14554753.18	40°04'37.009"N	104°59'51.979"W	0.00	
26.00	0.000	321.190	26.00	0.00	0.00	0.00	1641039.92	14554753.18	40°04'37.009"N	104°59'51.979"W	0.00	
134.00	0.040	321.190	134.00	-0.03	0.03	-0.02	1641039.90	14554753.21	40°04'37.009"N	104°59'51.980"W	0.04	FIRST SURFACE MWD+IFR1 SURVEY
229.00	0.260	296.840	229.00	-0.15	0.15	-0.24	1641039.68	14554753.33	40°04'37.011"N	104°59'51.982"W	0.24	
324.00	0.880	328.220	323.99	-0.87	0.87	-0.81	1641039.11	14554754.05	40°04'37.018"N	104°59'51.990"W	0.71	
419.00	0.570	335.860	418.99	-1.92	1.92	-1.39	1641038.53	14554755.10	40°04'37.028"N	104°59'51.997"W	0.34	
515.00	0.570	129.500	514.99	-2.05	2.05	-1.22	1641038.70	14554755.23	40°04'37.029"N	104°59'51.995"W	1.16	
610.00	0.700	232.070	609.98	-1.40	1.40	-1.31	1641038.61	14554754.58	40°04'37.023"N	104°59'51.996"W	1.05	
705.00	1.890	244.900	704.96	-0.37	0.37	-3.19	1641036.73	14554753.56	40°04'37.013"N	104°59'52.020"W	1.28	
800.00	4.390	260.280	799.81	0.91	-0.90	-8.19	1641031.73	14554752.28	40°04'37.000"N	104°59'52.085"W	2.75	
896.00	6.900	264.410	895.33	2.10	-2.09	-17.55	1641022.37	14554751.10	40°04'36.989"N	104°59'52.205"W	2.65	
991.00	7.340	265.550	989.60	3.13	-3.11	-29.28	1641010.65	14554750.07	40°04'36.978"N	104°59'52.356"W	0.49	
1086.00	7.730	263.790	1083.78	4.30	-4.27	-41.68	1640998.25	14554748.91	40°04'36.967"N	104°59'52.515"W	0.48	
1181.00	8.130	266.610	1177.87	5.39	-5.36	-54.74	1640985.20	14554747.82	40°04'36.956"N	104°59'52.683"W	0.59	
1276.00	9.010	267.220	1271.81	6.16	-6.12	-68.88	1640971.07	14554747.06	40°04'36.949"N	104°59'52.865"W	0.93	
1371.00	12.610	267.750	1365.11	6.94	-6.89	-86.67	1640953.28	14554746.29	40°04'36.941"N	104°59'53.094"W	3.79	
1466.00	14.500	268.800	1457.46	7.60	-7.55	-108.93	1640931.03	14554745.64	40°04'36.935"N	104°59'53.380"W	2.01	
1561.00	14.990	267.920	1549.33	8.31	-8.24	-133.10	1640908.88	14554744.94	40°04'36.928"N	104°59'53.691"W	0.57	
1656.00	16.880	267.050	1640.68	9.48	-9.40	-159.15	1640880.83	14554743.78	40°04'36.916"N	104°59'54.027"W	2.01	
1751.00	17.140	265.110	1731.52	11.40	-11.30	-186.87	1640853.12	14554741.88	40°04'36.898"N	104°59'54.383"W	0.66	
1817.00	18.500	265.730	1794.35	13.02	-12.91	-207.01	1640833.00	14554740.27	40°04'36.882"N	104°59'54.642"W	2.08	LAST SURFACE MWD+IFR1 SURVEY
1888.00	17.420	264.370	1861.89	14.91	-14.79	-228.82	1640811.19	14554738.39	40°04'36.863"N	104°59'54.923"W	1.63	FIRST BHGE MWD+IFR1+SC SURVEY
1977.00	19.110	266.790	1946.41	17.05	-16.91	-256.62	1640783.40	14554736.27	40°04'36.842"N	104°59'55.280"W	2.08	
2067.00	19.100	268.720	2031.45	18.22	-18.07	-286.05	1640753.98	14554735.11	40°04'36.831"N	104°59'55.659"W	0.70	
2156.00	19.060	269.120	2115.56	18.79	-18.61	-315.14	1640724.90	14554734.57	40°04'36.825"N	104°59'56.033"W	0.15	
2246.00	18.940	270.250	2200.66	18.96	-18.78	-344.44	1640695.62	14554734.40	40°04'36.824"N	104°59'56.410"W	0.43	
2335.00	19.080	266.730	2284.81	19.75	-19.54	-373.41	1640666.66	14554733.64	40°04'36.816"N	104°59'56.783"W	1.30	
2425.00	19.240	260.830	2369.83	22.96	-22.75	-402.74	1640637.35	14554730.43	40°04'36.784"N	104°59'57.160"W	2.16	
2514.00	18.770	261.510	2453.98	27.43	-27.20	-431.37	1640608.72	14554725.98	40°04'36.740"N	104°59'57.528"W	0.58	
2604.00	17.730	264.340	2539.45	30.93	-30.69	-459.33	1640580.77	14554722.50	40°04'36.706"N	104°59'57.888"W	1.52	
2693.00	19.490	267.130	2623.80	33.03	-32.77	-487.65	1640552.46	14554720.42	40°04'36.685"N	104°59'58.252"W	2.22	
2783.00	19.820	261.870	2708.56	35.96	-35.68	-517.75	1640522.37	14554717.51	40°04'36.657"N	104°59'58.640"W	2.00	
2873.00	19.870	256.800	2793.22	41.62	-41.33	-547.75	1640492.39	14554711.86	40°04'36.601"N	104°59'59.026"W	1.91	
2962.00	19.650	257.420	2876.98	48.35	-48.04	-577.08	1640463.07	14554705.15	40°04'36.534"N	104°59'59.403"W	0.34	
3052.00	19.820	258.960	2961.69	54.59	-54.26	-606.83	1640433.34	14554698.93	40°04'36.473"N	104°59'59.785"W	0.61	
3141.00	19.560	260.390	3045.49	59.98	-59.63	-636.33	1640403.85	14554693.55	40°04'36.420"N	105°00'00.165"W	0.62	
3231.00	18.810	263.110	3130.49	64.25	-63.89	-665.58	1640374.60	14554689.30	40°04'36.378"N	105°00'00.541"W	1.30	
3320.00	19.550	260.440	3214.56	68.46	-68.08	-694.51	1640345.69	14554685.11	40°04'36.336"N	105°00'00.913"W	1.29	
3409.00	19.690	257.650	3298.39	74.16	-73.76	-723.85	1640316.37	14554679.43	40°04'36.280"N	105°00'01.291"W	1.06	
3499.00	18.610	252.360	3383.41	81.77	-81.36	-752.35	1640287.88	14554671.83	40°04'36.205"N	105°00'01.657"W	2.27	
3588.00	18.550	253.600	3467.78	90.08	-89.66	-779.46	1640260.78	14554663.54	40°04'36.123"N	105°00'02.006"W	0.45	
3678.00	18.550	260.830	3553.11	96.42	-95.99	-807.33	1640232.92	14554657.21	40°04'36.061"N	105°00'02.365"W	2.55	
3767.00	19.330	264.460	3637.30	100.12	-99.66	-835.97	1640204.29	14554653.54	40°04'36.024"N	105°00'02.733"W	1.59	
3857.00	19.430	263.660	3722.20	103.22	-102.75	-865.67	1640174.60	14554650.45	40°04'35.994"N	105°00'03.115"W	0.32	
3946.00	19.470	264.960	3806.12	106.18	-105.69	-895.16	1640145.12	14554647.51	40°04'35.965"N	105°00'03.495"W	0.49	

Actual Wellpath Report

MC 3-4HZ AWP

Page 3 of 8

REFERENCE WELLPATH IDENTIFICATION

Operator	KERR-MCGEE OIL & GAS ONSHORE LP (WA)	Slot	SLOT#35 MC 3-4HZ (1427'FSL & 327'FWL,SEC.03)
Area	COLORADO	Well	MC 3-4HZ
Field	WELD COUNTY (UTM/TRUE NORTH)	Wellbore	MC 3-4HZ AWB
Facility	SEC.03-T1N-R68W		

WELLPATH DATA (225 stations) † = interpolated/extrapolated station

MD [ft]	Inclination [°]	Azimuth [°]	TVD [ft]	Vert Sect [ft]	North [ft]	East [ft]	Grid East [US ft]	Grid North [US ft]	Latitude	Longitude	DLS [°/100ft]	Comments
4036.00	19.310	260.690	3891.02	109.92	-109.42	-924.79	1640115.51	14554643.78	40°04'35.928"N	105°00'03.876"W	1.58	
4125.00	19.220	262.540	3975.03	114.22	-113.70	-953.83	1640086.47	14554639.50	40°04'35.885"N	105°00'04.249"W	0.69	
4214.00	19.110	259.550	4059.10	118.78	-118.24	-982.69	1640057.63	14554634.96	40°04'35.840"N	105°00'04.621"W	1.11	
4304.00	18.720	261.470	4144.24	123.61	-123.06	-1011.46	1640028.87	14554630.15	40°04'35.793"N	105°00'04.991"W	0.82	
4393.00	19.220	258.990	4228.41	128.54	-127.98	-1039.96	1640000.38	14554625.23	40°04'35.744"N	105°00'05.357"W	1.07	
4483.00	19.340	249.750	4313.38	136.54	-135.96	-1068.49	1639971.86	14554617.24	40°04'35.665"N	105°00'05.724"W	3.39	
4572.00	17.840	244.960	4397.74	147.43	-146.84	-1094.67	1639945.69	14554606.38	40°04'35.558"N	105°00'06.061"W	2.40	
4661.00	16.300	256.560	4482.84	156.12	-155.51	-1119.18	1639921.19	14554597.70	40°04'35.472"N	105°00'06.376"W	4.19	
4751.00	18.660	266.870	4568.70	159.86	-159.24	-1145.85	1639894.53	14554593.98	40°04'35.435"N	105°00'06.719"W	4.32	
4840.00	18.960	271.140	4652.95	160.36	-159.73	-1174.53	1639865.87	14554593.49	40°04'35.430"N	105°00'07.088"W	1.58	
4930.00	19.050	270.630	4738.05	159.92	-159.27	-1203.83	1639836.58	14554593.94	40°04'35.435"N	105°00'07.465"W	0.21	
5019.00	18.920	266.320	4822.21	160.71	-160.04	-1232.75	1639807.66	14554593.18	40°04'35.427"N	105°00'07.837"W	1.58	
5109.00	18.950	261.180	4907.35	163.90	-163.22	-1261.76	1639778.67	14554590.00	40°04'35.396"N	105°00'08.210"W	1.85	
5198.00	18.940	261.710	4991.53	168.21	-167.52	-1290.33	1639750.11	14554585.70	40°04'35.353"N	105°00'08.578"W	0.19	
5288.00	19.030	260.740	5076.63	172.70	-171.98	-1319.27	1639721.19	14554581.23	40°04'35.309"N	105°00'08.950"W	0.36	
5377.00	19.010	261.180	5160.77	177.27	-176.54	-1347.91	1639692.56	14554576.68	40°04'35.264"N	105°00'09.319"W	0.16	
5467.00	18.810	255.880	5245.92	183.07	-182.33	-1376.47	1639664.01	14554570.89	40°04'35.207"N	105°00'09.686"W	1.92	
5556.00	17.960	251.710	5330.38	190.89	-190.13	-1403.41	1639637.08	14554563.09	40°04'35.130"N	105°00'10.033"W	1.76	
5645.00	16.370	258.220	5415.42	197.78	-197.00	-1428.72	1639611.78	14554556.22	40°04'35.062"N	105°00'10.358"W	2.80	
5735.00	14.060	270.590	5502.28	200.27	-199.48	-1452.08	1639588.43	14554553.75	40°04'35.037"N	105°00'10.659"W	4.41	
5825.00	13.030	275.840	5589.78	199.13	-198.33	-1473.11	1639567.41	14554554.89	40°04'35.049"N	105°00'10.929"W	1.78	
5914.00	10.670	266.020	5676.89	198.69	-197.89	-1491.31	1639549.21	14554555.34	40°04'35.053"N	105°00'11.163"W	3.48	
6004.00	9.160	253.840	5765.55	201.27	-200.46	-1506.51	1639534.02	14554552.77	40°04'35.028"N	105°00'11.359"W	2.86	
6093.00	7.220	250.220	5853.64	205.14	-204.32	-1518.57	1639521.96	14554548.90	40°04'34.990"N	105°00'11.514"W	2.25	
6183.00	4.550	244.030	5943.16	208.63	-207.80	-1527.11	1639513.43	14554545.43	40°04'34.955"N	105°00'11.624"W	3.05	
6272.00	3.000	237.240	6031.96	211.44	-210.61	-1532.24	1639508.30	14554542.62	40°04'34.927"N	105°00'11.690"W	1.81	
6362.00	1.660	246.490	6121.89	213.23	-212.40	-1535.42	1639505.13	14554540.83	40°04'34.910"N	105°00'11.731"W	1.54	
6451.00	0.830	293.380	6210.87	213.49	-212.66	-1537.19	1639503.35	14554540.57	40°04'34.907"N	105°00'11.754"W	1.40	
6541.00	1.120	310.210	6300.86	212.67	-211.83	-1538.46	1639502.08	14554541.39	40°04'34.915"N	105°00'11.770"W	0.45	
6631.00	1.680	323.490	6390.83	211.04	-210.21	-1539.92	1639500.63	14554543.02	40°04'34.931"N	105°00'11.789"W	0.72	
6720.00	0.680	276.230	6479.81	209.93	-209.10	-1541.22	1639499.33	14554544.13	40°04'34.942"N	105°00'11.805"W	1.48	
6810.00	0.060	225.660	6569.81	209.91	-209.07	-1541.78	1639498.76	14554544.15	40°04'34.943"N	105°00'11.813"W	0.72	
6900.00	0.040	256.240	6659.81	209.95	-209.11	-1541.85	1639498.70	14554544.11	40°04'34.942"N	105°00'11.813"W	0.04	
6989.00	0.040	304.790	6748.81	209.94	-209.10	-1541.90	1639498.64	14554544.12	40°04'34.942"N	105°00'11.814"W	0.04	
7079.00	0.000	8.310	6838.81	209.92	-209.09	-1541.93	1639498.62	14554544.14	40°04'34.942"N	105°00'11.815"W	0.04	
7168.00	0.070	11.320	6927.81	209.87	-209.03	-1541.92	1639498.63	14554544.19	40°04'34.943"N	105°00'11.814"W	0.08	
7258.00	0.000	8.310	7017.81	209.81	-208.98	-1541.91	1639498.64	14554544.25	40°04'34.944"N	105°00'11.814"W	0.08	
7347.00	0.030	23.580	7106.81	209.79	-208.96	-1541.90	1639498.65	14554544.27	40°04'34.944"N	105°00'11.814"W	0.03	
7437.00	0.040	285.070	7196.81	209.76	-208.93	-1541.92	1639498.63	14554544.30	40°04'34.944"N	105°00'11.814"W	0.06	
7492.00†	2.617	176.112	7251.79	211.01	-210.18	-1541.85	1639498.69	14554543.05	40°04'34.932"N	105°00'11.814"W	4.78	KOP
7527.00	4.290	175.790	7286.72	213.11	-212.28	-1541.70	1639498.84	14554540.95	40°04'34.911"N	105°00'11.812"W	4.78	
7616.00	11.910	184.130	7374.77	225.61	-224.78	-1542.12	1639498.43	14554528.46	40°04'34.787"N	105°00'11.817"W	8.64	
7706.00	21.520	182.680	7460.87	251.42	-250.59	-1543.56	1639496.98	14554502.65	40°04'34.532"N	105°00'11.836"W	10.69	
7795.00	31.250	180.650	7540.50	290.91	-290.08	-1544.59	1639495.96	14554463.18	40°04'34.142"N	105°00'11.849"W	10.98	
7885.00	40.450	179.470	7613.38	343.56	-342.73	-1544.58	1639495.96	14554410.55	40°04'33.622"N	105°00'11.849"W	10.25	

Actual Wellpath Report

MC 3-4HZ AWP

Page 4 of 8

REFERENCE WELLPATH IDENTIFICATION			
Operator	KERR-MCGEE OIL & GAS ONSHORE LP (WA)	Slot	SLOT#35 MC 3-4HZ (1427'FSL & 327'FWL,SEC.03)
Area	COLORADO	Well	MC 3-4HZ
Field	WELD COUNTY (UTM/TRUE NORTH)	Wellbore	MC 3-4HZ AWB
Facility	SEC.03-T1N-R68W		

WELLPATH DATA (225 stations) † = interpolated/extrapolated station												
MD [ft]	Inclination [°]	Azimuth [°]	TVD [ft]	Vert Sect [ft]	North [ft]	East [ft]	Grid East [US ft]	Grid North [US ft]	Latitude	Longitude	DLS [°/100ft]	Comments
7974.00	47.640	181.810	7677.31	405.38	-404.55	-1545.36	1639495.19	14554348.76	40°04'33.011"N	105°00'11.858"W	8.28	
8064.00	56.980	182.130	7732.28	476.48	-475.65	-1547.82	1639492.74	14554277.69	40°04'32.308"N	105°00'11.890"W	10.38	
8151.00†	68.094	181.072	7772.34	553.53	-552.69	-1549.93	1639490.62	14554200.67	40°04'31.547"N	105°00'11.917"W	12.82	ENTER LANDBOX (874'FSL & 1223'FEL,SEC.04) 40.0754297 -105.0033103
8153.00	68.350	181.050	7773.08	555.39	-554.55	-1549.97	1639490.59	14554198.82	40°04'31.529"N	105°00'11.918"W	12.82	
8243.00	75.310	181.190	7801.13	640.83	-639.99	-1551.64	1639488.92	14554113.41	40°04'30.684"N	105°00'11.939"W	7.73	
8333.00	82.470	180.510	7818.46	729.08	-728.24	-1552.94	1639487.62	14554025.20	40°04'29.812"N	105°00'11.956"W	7.99	
8422.00	88.860	177.940	7825.18	817.76	-816.92	-1551.73	1639488.83	14553936.55	40°04'28.936"N	105°00'11.940"W	7.74	LANDING (610'FSL & 1225'FEL,SEC.04) 40.0747044 -105.0033167
8512.00	89.880	176.040	7826.17	907.62	-906.78	-1547.01	1639493.55	14553846.72	40°04'28.048"N	105°00'11.879"W	2.40	
8601.00	89.850	175.550	7826.38	996.38	-995.54	-1540.48	1639500.08	14553758.00	40°04'27.171"N	105°00'11.795"W	0.55	
8691.00	89.970	176.320	7826.52	1086.15	-1085.32	-1534.10	1639506.46	14553668.26	40°04'26.283"N	105°00'11.713"W	0.87	
8780.00	89.910	178.010	7826.62	1175.03	-1174.20	-1529.70	1639510.86	14553579.41	40°04'25.405"N	105°00'11.656"W	1.90	
8870.00	89.820	178.640	7826.83	1264.99	-1264.17	-1527.07	1639513.49	14553489.49	40°04'24.516"N	105°00'11.623"W	0.71	
8960.00	89.910	182.010	7827.04	1354.98	-1354.15	-1527.58	1639512.99	14553399.54	40°04'23.627"N	105°00'11.629"W	3.75	
9049.00	89.350	184.490	7827.62	1443.83	-1443.00	-1532.63	1639507.95	14553310.72	40°04'22.749"N	105°00'11.694"W	2.86	
9139.00	89.380	185.940	7828.61	1533.45	-1532.62	-1540.81	1639499.77	14553221.14	40°04'21.863"N	105°00'11.799"W	1.61	
9228.00	89.450	186.030	7829.52	1621.97	-1621.13	-1550.09	1639490.50	14553132.67	40°04'20.988"N	105°00'11.918"W	0.13	
9317.00	89.720	184.640	7830.17	1710.58	-1709.74	-1558.36	1639482.23	14553044.09	40°04'20.113"N	105°00'12.025"W	1.59	
9407.00	89.450	184.510	7830.82	1800.30	-1799.45	-1565.54	1639475.05	14552954.42	40°04'19.226"N	105°00'12.117"W	0.33	
9486.00†	89.423	184.004	7831.59	1879.08	-1878.23	-1571.40	1639469.20	14552875.67	40°04'18.448"N	105°00'12.192"W	0.64	EXIT RADIUS HEEL (451'FNL & 1245'FEL,SEC.09) 40.0717910 -105.0033868
9496.00	89.420	183.940	7831.70	1889.05	-1888.20	-1572.10	1639468.50	14552865.70	40°04'18.349"N	105°00'12.201"W	0.64	
9586.00	89.170	181.490	7832.80	1978.94	-1978.09	-1576.36	1639464.24	14552775.85	40°04'17.461"N	105°00'12.256"W	2.74	
9675.00	89.380	178.160	7833.93	2067.92	-2067.07	-1576.09	1639464.52	14552686.91	40°04'16.582"N	105°00'12.252"W	3.75	
9764.00	89.230	176.090	7835.01	2156.79	-2155.94	-1571.62	1639468.98	14552598.06	40°04'15.703"N	105°00'12.195"W	2.33	
9854.00	89.320	176.480	7836.15	2246.59	-2245.75	-1565.79	1639474.81	14552508.30	40°04'14.816"N	105°00'12.120"W	0.44	
9943.00	91.480	178.850	7835.53	2335.50	-2334.66	-1562.17	1639478.44	14552419.42	40°04'13.937"N	105°00'12.073"W	3.60	
10033.00	89.880	180.770	7834.46	2425.49	-2424.65	-1561.87	1639478.74	14552329.47	40°04'13.048"N	105°00'12.069"W	2.78	
10123.00	88.770	180.190	7835.52	2515.48	-2514.63	-1562.62	1639477.99	14552239.52	40°04'12.159"N	105°00'12.079"W	1.39	
10212.00	88.830	176.820	7837.38	2604.42	-2603.57	-1560.30	1639480.31	14552150.62	40°04'11.280"N	105°00'12.049"W	3.79	
10302.00	89.850	175.720	7838.42	2694.21	-2693.37	-1554.45	1639486.17	14552060.85	40°04'10.392"N	105°00'11.974"W	1.67	
10391.00	89.820	176.240	7838.68	2782.99	-2782.15	-1548.21	1639492.40	14551972.11	40°04'09.515"N	105°00'11.893"W	0.59	
10480.00	90.770	178.490	7838.22	2871.89	-2871.05	-1544.12	1639496.50	14551883.25	40°04'08.636"N	105°00'11.841"W	2.74	
10570.00	90.920	180.370	7836.89	2961.87	-2961.03	-1543.22	1639497.39	14551793.30	40°04'07.747"N	105°00'11.829"W	2.10	
10660.00	90.710	182.880	7835.61	3051.82	-3050.98	-1545.77	1639494.84	14551703.39	40°04'06.858"N	105°00'11.862"W	2.80	
10749.00	90.120	178.380	7834.97	3140.79	-3139.95	-1546.75	1639493.87	14551614.46	40°04'05.979"N	105°00'11.874"W	5.10	
10839.00	90.680	173.960	7834.34	3230.56	-3229.72	-1540.74	1639499.88	14551524.72	40°04'05.092"N	105°00'11.797"W	4.95	
10928.00	90.550	176.740	7833.38	3319.25	-3318.42	-1533.53	1639507.09	14551436.06	40°04'04.215"N	105°00'11.704"W	3.13	
11018.00	90.770	179.210	7832.34	3409.18	-3408.35	-1530.35	1639510.27	14551346.17	40°04'03.327"N	105°00'11.663"W	2.76	
11107.00	90.770	181.260	7831.15	3498.16	-3497.33	-1530.71	1639509.91	14551257.21	40°04'02.447"N	105°00'11.668"W	2.30	
11197.00	90.580	183.180	7830.09	3588.09	-3587.26	-1534.20	1639506.43	14551167.33	40°04'01.559"N	105°00'11.712"W	2.14	
11286.00	90.710	183.480	7829.09	3676.93	-3676.10	-1539.37	1639501.26	14551078.52	40°04'00.681"N	105°00'11.779"W	0.37	
11376.00	90.740	181.000	7827.95	3766.85	-3766.02	-1542.88	1639497.75	14550988.64	40°03'59.792"N	105°00'11.824"W	2.76	
11465.00	90.890	179.080	7826.68	3855.84	-3855.00	-1542.95	1639497.69	14550899.69	40°03'58.913"N	105°00'11.825"W	2.16	
11555.00	90.770	177.050	7825.38	3945.77	-3944.94	-1539.91	1639500.73	14550809.79	40°03'58.024"N	105°00'11.786"W	2.26	
11644.00	90.430	175.060	7824.44	4034.55	-4033.72	-1533.79	1639506.85	14550721.05	40°03'57.147"N	105°00'11.707"W	2.27	
11734.00	89.050	170.910	7824.85	4123.85	-4123.02	-1522.80	1639517.84	14550631.78	40°03'56.264"N	105°00'11.565"W	4.86	

REFERENCE WELLPATH IDENTIFICATION

Operator	KERR-MCGEE OIL & GAS ONSHORE LP (WA)	Slot	SLOT#35 MC 3-4HZ (1427'FSL & 327'FWL,SEC.03)
Area	COLORADO	Well	MC 3-4HZ
Field	WELD COUNTY (UTM/TRUE NORTH)	Wellbore	MC 3-4HZ AWB
Facility	SEC.03-T1N-R68W		

WELLPATH DATA (225 stations)

MD [ft]	Inclination [°]	Azimuth [°]	TVD [ft]	Vert Sect [ft]	North [ft]	East [ft]	Grid East [US ft]	Grid North [US ft]	Latitude	Longitude	DLS [°/100ft]	Comments
11823.00	89.600	173.620	7825.90	4212.01	-4211.20	-1510.82	1639529.81	14550543.64	40°03'55.393"N	105°00'11.411"W	3.11	
11913.00	89.720	177.680	7826.44	4301.73	-4300.92	-1504.00	1639536.64	14550453.95	40°03'54.506"N	105°00'11.323"W	4.51	
12003.00	89.600	179.520	7826.97	4391.70	-4390.89	-1501.80	1639538.84	14550364.02	40°03'53.617"N	105°00'11.295"W	2.05	
12092.00	89.690	181.030	7827.52	4480.69	-4479.88	-1502.22	1639538.41	14550275.06	40°03'52.738"N	105°00'11.300"W	1.70	
12181.00	89.660	182.250	7828.03	4569.65	-4568.84	-1504.77	1639535.87	14550186.14	40°03'51.859"N	105°00'11.333"W	1.37	
12271.00	89.630	183.630	7828.58	4659.53	-4658.72	-1509.39	1639531.26	14550096.30	40°03'50.970"N	105°00'11.392"W	1.53	
12361.00	89.570	185.630	7829.21	4749.24	-4748.42	-1516.65	1639524.00	14550006.63	40°03'50.084"N	105°00'11.486"W	2.22	
12450.00	89.510	185.060	7829.93	4837.85	-4837.03	-1524.94	1639515.71	14549918.06	40°03'49.208"N	105°00'11.592"W	0.64	
12540.00	89.660	186.600	7830.58	4927.39	-4926.56	-1534.08	1639506.58	14549828.57	40°03'48.324"N	105°00'11.710"W	1.72	
12629.00	90.030	185.060	7830.82	5015.93	-5015.09	-1543.12	1639497.54	14549740.07	40°03'47.449"N	105°00'11.826"W	1.78	
12719.00	89.850	182.490	7830.91	5105.73	-5104.89	-1549.05	1639491.62	14549650.30	40°03'46.561"N	105°00'11.902"W	2.86	
12808.00	89.970	179.580	7831.05	5194.70	-5193.87	-1550.65	1639490.02	14549561.36	40°03'45.682"N	105°00'11.923"W	3.27	
12898.00	89.970	178.110	7831.10	5284.68	-5283.85	-1548.84	1639491.83	14549471.42	40°03'44.793"N	105°00'11.899"W	1.63	
12987.00	89.820	177.090	7831.26	5373.60	-5372.77	-1545.11	1639495.56	14549382.54	40°03'43.914"N	105°00'11.851"W	1.16	
13077.00	89.970	178.270	7831.43	5463.52	-5462.69	-1541.47	1639499.20	14549292.65	40°03'43.025"N	105°00'11.804"W	1.32	
13166.00	89.880	179.620	7831.55	5552.51	-5551.67	-1539.83	1639500.84	14549203.70	40°03'42.146"N	105°00'11.783"W	1.52	
13255.00	89.880	178.380	7831.73	5641.49	-5640.66	-1538.28	1639502.40	14549114.75	40°03'41.267"N	105°00'11.763"W	1.39	
13345.00	89.820	178.950	7831.97	5731.46	-5730.63	-1536.18	1639504.50	14549024.81	40°03'40.377"N	105°00'11.736"W	0.64	
13435.00	89.910	179.910	7832.18	5821.46	-5820.63	-1535.29	1639505.40	14548934.86	40°03'39.488"N	105°00'11.725"W	1.07	
13524.00	89.880	181.390	7832.34	5910.45	-5909.62	-1536.30	1639504.39	14548845.90	40°03'38.609"N	105°00'11.738"W	1.66	
13613.00	89.940	183.720	7832.48	5999.36	-5998.52	-1540.26	1639500.42	14548757.03	40°03'37.730"N	105°00'11.789"W	2.62	
13703.00	90.150	184.200	7832.41	6089.14	-6088.31	-1546.48	1639494.21	14548667.28	40°03'36.843"N	105°00'11.868"W	0.58	
13793.00	90.030	182.120	7832.27	6179.01	-6178.17	-1551.44	1639489.26	14548577.46	40°03'35.955"N	105°00'11.932"W	2.31	
13882.00	89.970	181.230	7832.27	6267.97	-6267.13	-1554.04	1639486.66	14548488.53	40°03'35.076"N	105°00'11.965"W	1.00	
13971.00	90.180	181.190	7832.15	6356.95	-6356.11	-1555.92	1639484.78	14548399.59	40°03'34.196"N	105°00'11.990"W	0.24	
14061.00	90.000	181.370	7832.01	6446.93	-6446.09	-1557.93	1639482.78	14548309.65	40°03'33.307"N	105°00'12.015"W	0.28	
14150.00	90.000	177.980	7832.01	6535.91	-6535.07	-1557.43	1639483.28	14548220.70	40°03'32.428"N	105°00'12.009"W	3.81	
14240.00	90.000	176.610	7832.01	6625.81	-6624.97	-1553.18	1639487.53	14548130.84	40°03'31.539"N	105°00'11.954"W	1.52	
14329.00	89.970	176.100	7832.04	6714.62	-6713.79	-1547.52	1639493.19	14548042.05	40°03'30.662"N	105°00'11.881"W	0.57	
14419.00	89.140	176.300	7832.74	6804.42	-6803.59	-1541.56	1639499.15	14547952.29	40°03'29.774"N	105°00'11.805"W	0.95	
14509.00	89.170	176.740	7834.06	6894.24	-6893.41	-1536.09	1639504.62	14547862.50	40°03'28.887"N	105°00'11.734"W	0.49	
14598.00	89.780	178.000	7834.88	6983.14	-6982.31	-1532.01	1639508.70	14547773.64	40°03'28.008"N	105°00'11.682"W	1.57	
14687.00	89.820	179.800	7835.19	7072.12	-7071.29	-1530.30	1639510.41	14547684.70	40°03'27.129"N	105°00'11.660"W	2.02	
14777.00	89.850	181.480	7835.45	7162.11	-7161.28	-1531.31	1639509.41	14547594.74	40°03'26.239"N	105°00'11.672"W	1.87	
14866.00	90.220	182.450	7835.39	7251.06	-7250.23	-1534.36	1639506.36	14547505.83	40°03'25.360"N	105°00'11.712"W	1.17	
14956.00	90.400	182.340	7834.91	7340.98	-7340.15	-1538.12	1639502.60	14547415.95	40°03'24.472"N	105°00'11.760"W	0.23	
15045.00	90.340	183.420	7834.33	7429.87	-7429.03	-1542.59	1639498.13	14547327.10	40°03'23.593"N	105°00'11.817"W	1.22	
15135.00	89.970	182.700	7834.09	7519.74	-7518.90	-1547.40	1639493.33	14547237.26	40°03'22.705"N	105°00'11.879"W	0.90	
15224.00	89.940	179.660	7834.16	7608.71	-7607.87	-1549.23	1639491.50	14547148.33	40°03'21.826"N	105°00'11.903"W	3.42	
15314.00	89.970	178.700	7834.23	7698.70	-7697.86	-1547.94	1639492.79	14547058.37	40°03'20.937"N	105°00'11.886"W	1.07	
15403.00	90.030	178.780	7834.23	7787.68	-7786.84	-1545.98	1639494.75	14546969.43	40°03'20.058"N	105°00'11.861"W	0.11	
15493.00	90.000	178.710	7834.21	7877.65	-7876.82	-1544.01	1639496.72	14546879.49	40°03'19.168"N	105°00'11.835"W	0.08	
15582.00	89.970	177.760	7834.23	7966.61	-7965.78	-1541.27	1639499.47	14546790.57	40°03'18.289"N	105°00'11.800"W	1.07	
15671.00	90.090	177.840	7834.18	8055.54	-8054.71	-1537.85	1639502.88	14546701.67	40°03'17.410"N	105°00'11.756"W	0.16	
15761.00	89.970	178.290	7834.13	8145.49	-8144.66	-1534.82	1639505.92	14546611.76	40°03'16.521"N	105°00'11.717"W	0.52	

Actual Wellpath Report

MC 3-4HZ AWP

Page 6 of 8

REFERENCE WELLPATH IDENTIFICATION			
Operator	KERR-MCGEE OIL & GAS ONSHORE LP (WA)	Slot	SLOT#35 MC 3-4HZ (1427'FSL & 327'FWL,SEC.03)
Area	COLORADO	Well	MC 3-4HZ
Field	WELD COUNTY (UTM/TRUE NORTH)	Wellbore	MC 3-4HZ AWP
Facility	SEC.03-T1N-R68W		

WELLPATH DATA (225 stations) † = interpolated/extrapolated station												
MD (ft)	Inclination [°]	Azimuth [°]	TVD (ft)	Vert Sect (ft)	North (ft)	East (ft)	Grid East [US ft]	Grid North [US ft]	Latitude	Longitude	DLS "/100ft	Comments
15850.00	90.030	179.730	7834.13	8234.47	-8233.64	-1533.28	1639507.46	14546522.81	40°03'15.642"N	105°00'11.697"W	1.62	
15940.00	90.060	180.520	7834.06	8324.47	-8323.64	-1533.47	1639507.27	14546432.85	40°03'14.753"N	105°00'11.699"W	0.88	
16029.00	90.030	180.840	7833.99	8413.47	-8412.64	-1534.53	1639506.22	14546343.89	40°03'13.873"N	105°00'11.713"W	0.36	
16119.00	89.970	181.880	7833.99	8503.44	-8502.61	-1536.67	1639504.08	14546253.95	40°03'12.984"N	105°00'11.740"W	1.16	
16208.00	89.780	181.120	7834.19	8592.41	-8591.58	-1539.00	1639501.76	14546165.02	40°03'12.105"N	105°00'11.770"W	0.88	
16298.00	89.510	178.910	7834.75	8682.40	-8681.57	-1539.02	1639501.74	14546075.06	40°03'11.216"N	105°00'11.770"W	2.47	
16387.00	88.370	174.080	7836.39	8771.19	-8770.36	-1533.58	1639507.17	14545986.31	40°03'10.338"N	105°00'11.700"W	5.58	
16477.00	89.850	175.620	7837.79	8860.81	-8859.98	-1525.51	1639515.25	14545896.72	40°03'09.453"N	105°00'11.596"W	2.37	
16566.00	89.720	178.530	7838.13	8949.68	-8948.86	-1520.96	1639519.79	14545807.88	40°03'08.574"N	105°00'11.538"W	3.27	
16656.00	90.060	181.690	7838.30	9039.67	-9038.84	-1521.14	1639519.62	14545717.93	40°03'07.685"N	105°00'11.540"W	3.53	
16745.00	89.780	181.450	7838.42	9128.63	-9127.81	-1523.58	1639517.18	14545629.00	40°03'06.806"N	105°00'11.571"W	0.41	
16835.00	89.720	181.790	7838.82	9218.60	-9217.77	-1526.12	1639514.64	14545539.07	40°03'05.917"N	105°00'11.604"W	0.38	
16924.00	89.910	182.740	7839.10	9307.53	-9306.70	-1529.64	1639511.13	14545450.18	40°03'05.038"N	105°00'11.649"W	1.09	
17014.00	90.250	183.560	7838.98	9397.39	-9396.57	-1534.58	1639506.19	14545360.35	40°03'04.150"N	105°00'11.713"W	0.99	
17104.00	89.910	183.870	7838.85	9487.21	-9486.38	-1540.41	1639500.36	14545270.58	40°03'03.262"N	105°00'11.788"W	0.51	
17193.00	89.970	184.320	7838.94	9575.98	-9575.15	-1546.77	1639494.01	14545181.84	40°03'02.385"N	105°00'11.869"W	0.51	
17283.00	90.000	184.960	7838.97	9665.69	-9664.85	-1554.05	1639486.74	14545092.17	40°03'01.499"N	105°00'11.963"W	0.71	
17372.00	90.060	185.310	7838.92	9754.34	-9753.50	-1562.02	1639478.78	14545003.57	40°03'00.623"N	105°00'12.065"W	0.40	
17462.00	90.120	184.280	7838.78	9844.03	-9843.18	-1569.54	1639471.26	14544913.92	40°02'59.736"N	105°00'12.162"W	1.15	
17551.00	89.940	183.390	7838.73	9932.83	-9931.98	-1575.49	1639465.31	14544825.15	40°02'58.859"N	105°00'12.238"W	1.02	
17641.00	90.460	181.590	7838.42	10022.74	-10021.89	-1579.40	1639461.40	14544735.28	40°02'57.970"N	105°00'12.289"W	2.08	
17730.00	90.890	177.710	7837.37	10111.72	-10110.86	-1578.86	1639461.95	14544646.34	40°02'57.091"N	105°00'12.282"W	4.39	
17820.00	90.520	176.870	7836.26	10201.61	-10200.76	-1574.60	1639466.20	14544556.49	40°02'56.203"N	105°00'12.227"W	1.02	
17909.00	90.520	179.300	7835.46	10290.55	-10289.70	-1571.63	1639469.18	14544467.58	40°02'55.324"N	105°00'12.188"W	2.73	
17999.00	90.550	180.500	7834.61	10380.54	-10379.69	-1571.47	1639469.34	14544377.62	40°02'54.434"N	105°00'12.186"W	1.33	
18089.00	90.400	182.850	7833.87	10470.49	-10469.64	-1574.10	1639466.71	14544287.71	40°02'53.545"N	105°00'12.220"W	2.62	
18178.00	90.740	183.070	7832.98	10559.37	-10558.52	-1578.70	1639462.12	14544198.87	40°02'52.667"N	105°00'12.279"W	0.46	
18268.00	90.310	181.300	7832.16	10649.30	-10648.45	-1582.13	1639458.69	14544108.98	40°02'51.778"N	105°00'12.323"W	2.02	
18357.00	90.250	178.140	7831.72	10738.29	-10737.43	-1581.69	1639459.13	14544020.02	40°02'50.899"N	105°00'12.317"W	3.55	
18447.00	90.030	176.730	7831.50	10828.19	-10827.34	-1577.67	1639463.16	14543930.15	40°02'50.011"N	105°00'12.266"W	1.59	
18537.00	89.940	178.970	7831.53	10918.12	-10917.27	-1574.29	1639466.53	14543840.26	40°02'49.122"N	105°00'12.222"W	2.49	
18626.00	89.820	183.210	7831.71	11007.09	-11006.23	-1575.98	1639464.85	14543751.33	40°02'48.243"N	105°00'12.244"W	4.77	
18716.00	90.000	184.210	7831.86	11096.90	-11096.04	-1581.81	1639459.03	14543661.56	40°02'47.355"N	105°00'12.319"W	1.13	
18805.00	89.970	182.240	7831.88	11185.76	-11184.90	-1586.81	1639454.02	14543572.74	40°02'46.477"N	105°00'12.383"W	2.21	
18895.00	89.970	179.890	7831.93	11275.74	-11274.88	-1588.49	1639452.35	14543482.80	40°02'45.588"N	105°00'12.404"W	2.61	
18985.00	90.000	177.840	7831.95	11365.71	-11364.86	-1586.70	1639454.14	14543392.86	40°02'44.699"N	105°00'12.381"W	2.28	
19074.00	90.030	178.050	7831.93	11454.65	-11453.80	-1583.51	1639457.33	14543303.95	40°02'43.820"N	105°00'12.340"W	0.24	
19163.00	90.000	178.360	7831.90	11543.61	-11542.75	-1580.72	1639460.12	14543215.03	40°02'42.941"N	105°00'12.304"W	0.35	
19220.00†	90.019	178.968	7831.89	11600.59	-11599.74	-1579.39	1639461.45	14543158.07	40°02'42.378"N	105°00'12.287"W	1.07	ENTER RADIUS TOE (435'FSL & 1184'FEL,SEC.16) 40.0451049 -105.0034131
19253.00	90.030	179.320	7831.88	11633.59	-11632.73	-1578.90	1639461.94	14543125.08	40°02'42.051"N	105°00'12.281"W	1.07	
19342.00	90.090	180.870	7831.79	11722.58	-11721.73	-1579.05	1639461.80	14543036.12	40°02'41.172"N	105°00'12.283"W	1.74	
19431.00	90.310	182.930	7831.47	11811.53	-11810.68	-1582.00	1639458.85	14542947.21	40°02'40.293"N	105°00'12.321"W	2.33	
19521.00	89.880	181.240	7831.33	11901.47	-11900.61	-1585.27	1639455.58	14542857.31	40°02'39.404"N	105°00'12.363"W	1.94	
19580.00	90.030	179.850	7831.37	11960.47	-11959.61	-1585.84	1639455.02	14542798.34	40°02'38.821"N	105°00'12.370"W	2.37	LAST BHGE MWD+IFR1+SC SURVEY
19604.00	90.030	179.850	7831.36	11984.47	-11983.61	-1585.77	1639455.08	14542774.35	40°02'38.584"N	105°00'12.369"W	0.00	PTB (51'FSL & 1190'FEL,SEC.16) 40.0440511 -105.0034358

REFERENCE WELLPATH IDENTIFICATION			
Operator	KERR-MCGEE OIL & GAS ONSHORE LP (WA)	Slot	SLOT#35 MC 3-4HZ (1427'FSL & 327'FWL,SEC.03)
Area	COLORADO	Well	MC 3-4HZ
Field	WELD COUNTY (UTM/TRUE NORTH)	Wellbore	MC 3-4HZ AWB
Facility	SEC.03-T1N-R68W		

HOLE & CASING SECTIONS - Ref Wellbore: MC 3-4HZ AWB Ref Wellpath: MC 3-4HZ AWP									
String/Diameter	Start MD [ft]	End MD [ft]	Interval [ft]	Start TVD [ft]	End TVD [ft]	Start N/S [ft]	Start E/W [ft]	End N/S [ft]	End E/W [ft]
9.625in Casing Surface	26.00	1857.00	1831.00	26.00	1832.35	0.00	0.00	-13.92	-219.46

TARGETS								
Name	TVD [ft]	North [ft]	East [ft]	Grid East [US ft]	Grid North [US ft]	Latitude	Longitude	Shape
SEC.09-T1N-R68W	26.00	0.36	-44.78	1640995.16	14554753.54	40°04'37.013"N	104°59'52.555"W	polygon
SEC.16-T1N-R68W	26.00	0.36	-44.78	1640995.16	14554753.54	40°04'37.013"N	104°59'52.555"W	polygon
MC 3-4HZ HEEL REV-1(630'FSL & 1219'FEL,SEC.04)	7815.00	-794.43	-1548.76	1639491.80	14553959.03	40°04'29.158"N	105°00'11.902"W	point
MC 3-4HZ BHL REV-1(50'FSL & 1159'FEL,SEC.16)	7816.00	-11985.13	-1554.75	1639486.10	14542772.83	40°02'38.569"N	105°00'11.970"W	point
MC 3-4HZ LANDBOX	7817.00	0.00	0.00	1641039.92	14554753.18	40°04'37.009"N	104°59'51.979"W	polygon
MC 3-4HZ RADIUS 1	7817.00	-1424.51	-1650.92	1639389.70	14553329.20	40°04'22.931"N	105°00'13.216"W	polygon
MC 3-4HZ RADIUS 2	7817.00	-12034.78	-1727.21	1639313.70	14542723.20	40°02'38.078"N	105°00'14.188"W	polygon

WELLPATH COMPOSITION - Ref Wellbore: MC 3-4HZ AWB Ref Wellpath: MC 3-4HZ AWP				
Start MD [ft]	End MD [ft]	Positional Uncertainty Model	Log Name/Comment	Wellbore
26.00	1817.00	Custom APC_ISCWSA REV 2 MWD+IFR1 (approximation)	Custom APC ISCWSA Rev-2 MWD+IFR1 <134 - 1817>	MC 3-4HZ AWB
1817.00	19580.00	Custom APC_ISCWSA REV 2 MWD+IFR1+SC (approximation)	BHGE Custom APC ISCWSA Rev-2 MWD+IFR1+SC <1888 - 19580>	MC 3-4HZ AWB
19580.00	19604.00	Blind Drilling (std)	Projection to bit	MC 3-4HZ AWB

REFERENCE WELLPATH IDENTIFICATION

Operator	KERR-MCGEE OIL & GAS ONSHORE LP (WA)	Slot	SLOT#35 MC 3-4HZ (1427'FSL & 327'FWL,SEC.03)
Area	COLORADO	Well	MC 3-4HZ
Field	WELD COUNTY (UTM/TRUE NORTH)	Wellbore	MC 3-4HZ AWB
Facility	SEC.03-T1N-R68W		

WELLPATH COMMENTS

MD [ft]	Inclination [°]	Azimuth [°]	TVD [ft]	Comment
134.00	0.040	321.190	134.00	FIRST SURFACE MWD+IFR1 SURVEY
1817.00	18.500	265.730	1794.35	LAST SURFACE MWD+IFR1 SURVEY
1888.00	17.420	264.370	1861.89	FIRST BHGE MWD+IFR1+SC SURVEY
7492.00	2.617	176.112	7251.79	KOP
8151.00	68.094	181.072	7772.34	ENTER LANDBOX (874'FSL & 1223'FEL,SEC.04) 40.0754297 -105.0033103
8422.00	88.860	177.940	7825.18	LANDING (610'FSL & 1225'FEL,SEC.04) 40.0747044 -105.0033167
9486.00	89.423	184.004	7831.59	EXIT RADIUS HEEL (451'FNL & 1245'FEL,SEC.09) 40.0717910 -105.0033868
19220.00	90.019	178.968	7831.89	ENTER RADIUS TOE (435'FSL & 1184'FEL,SEC.16) 40.0451049 -105.0034131
19580.00	90.030	179.850	7831.37	LAST BHGE MWD+IFR1+SC SURVEY
19604.00	90.030	179.850	7831.36	PTB (51'FSL & 1190'FEL,SEC.16) 40.0440511 -105.0034358