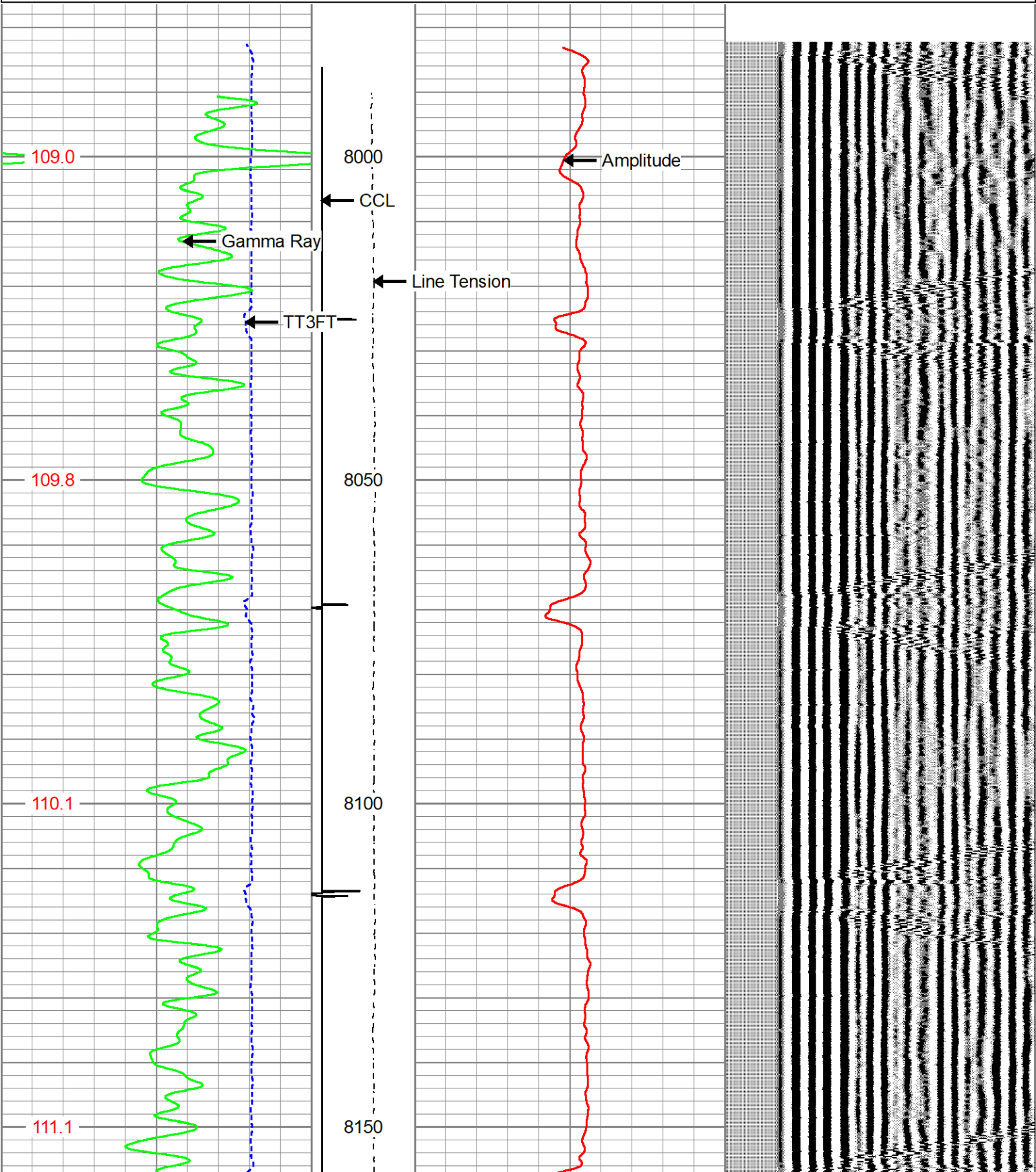


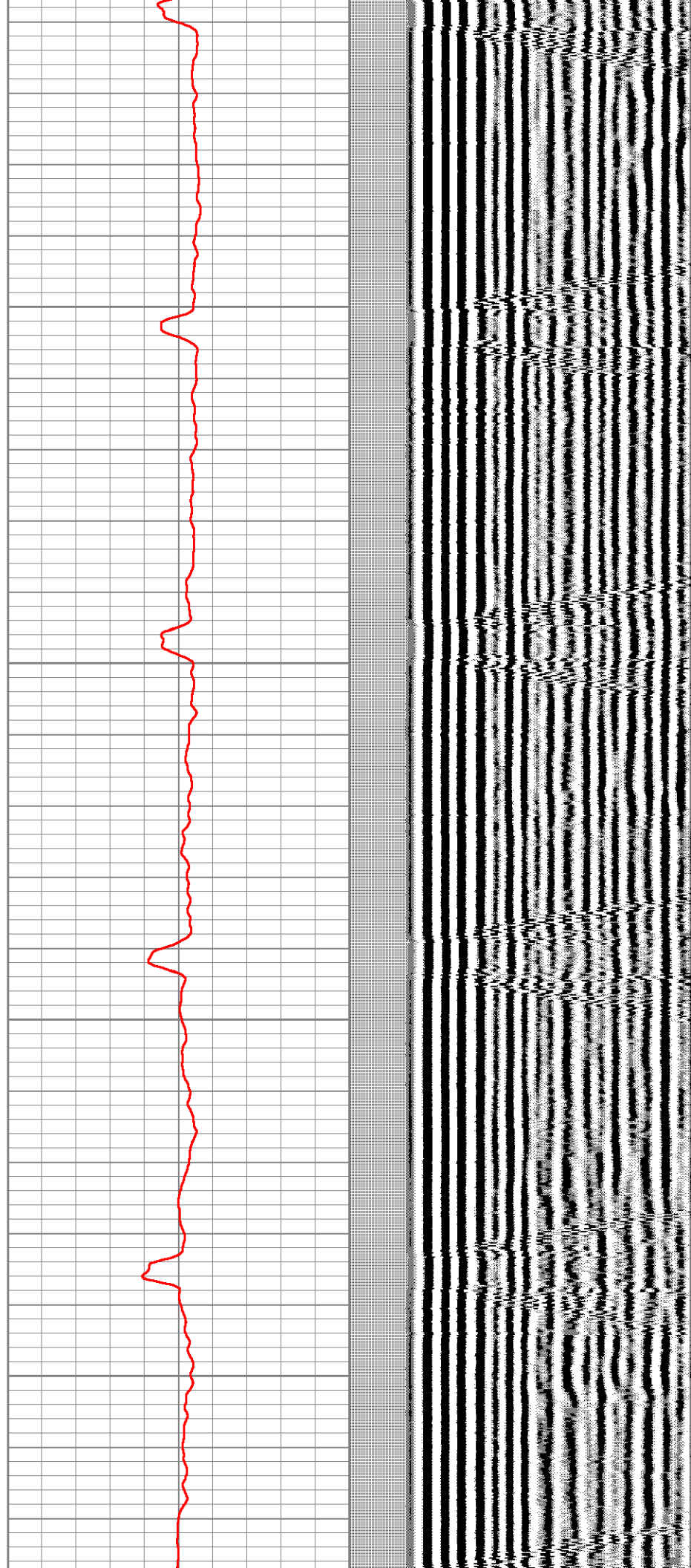
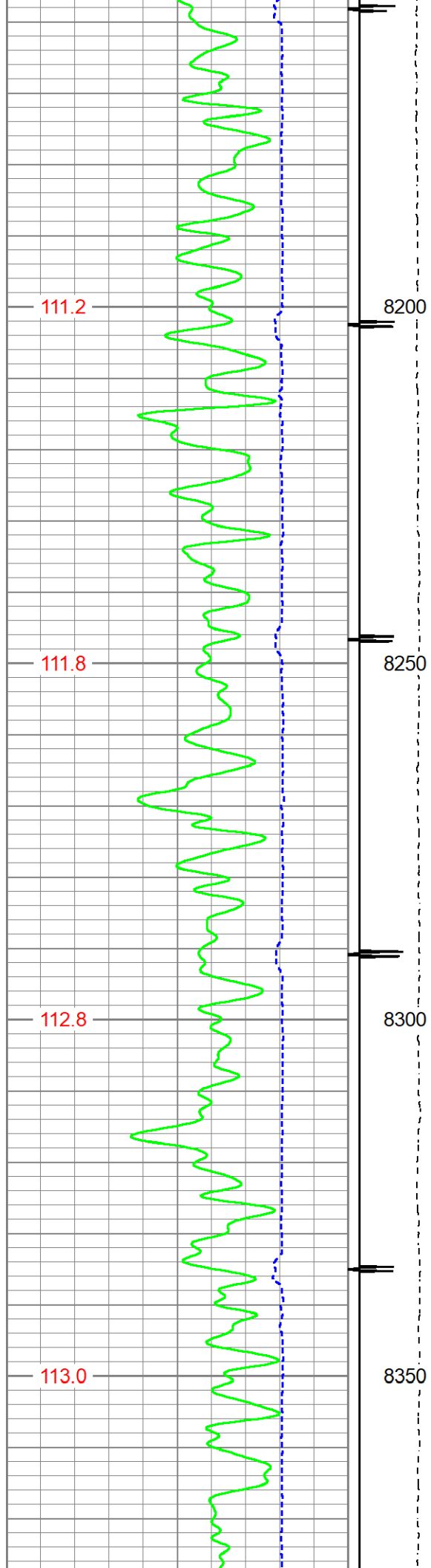


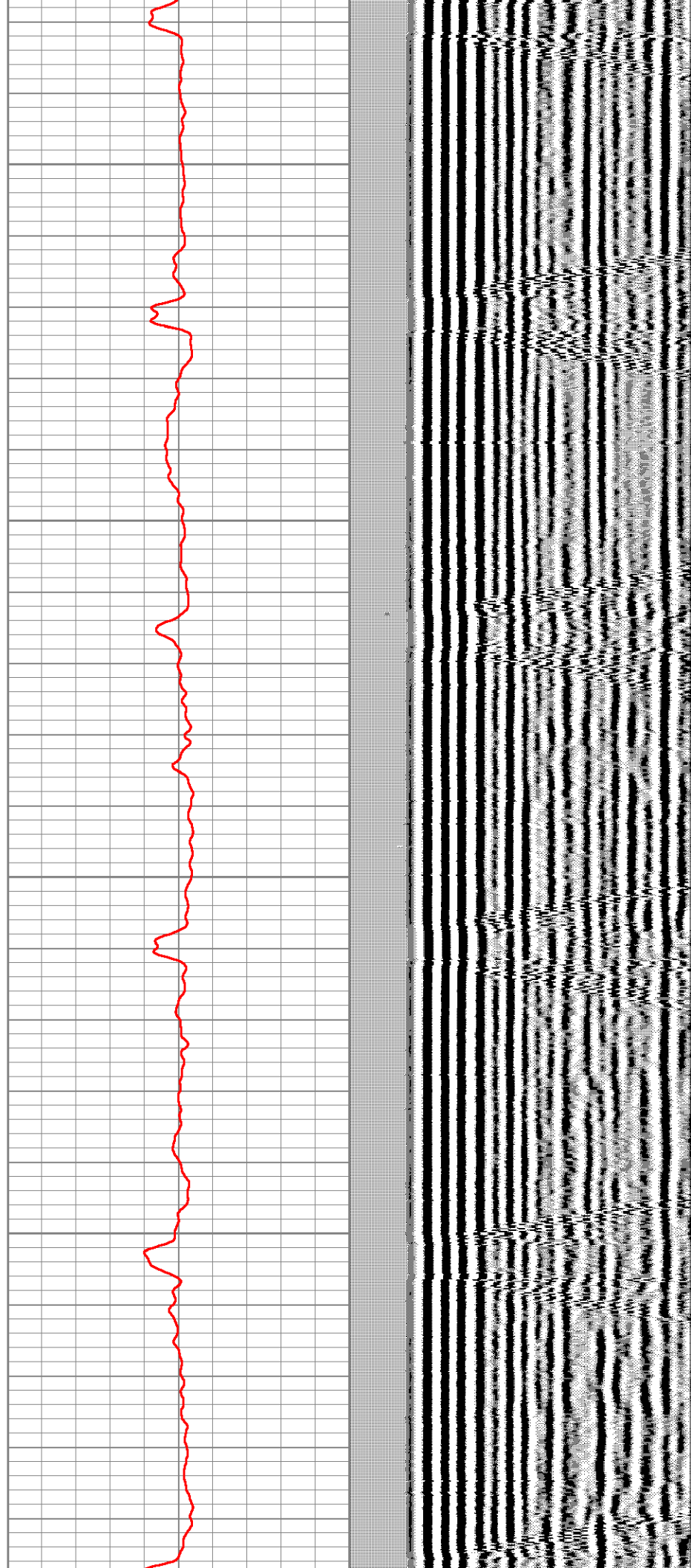
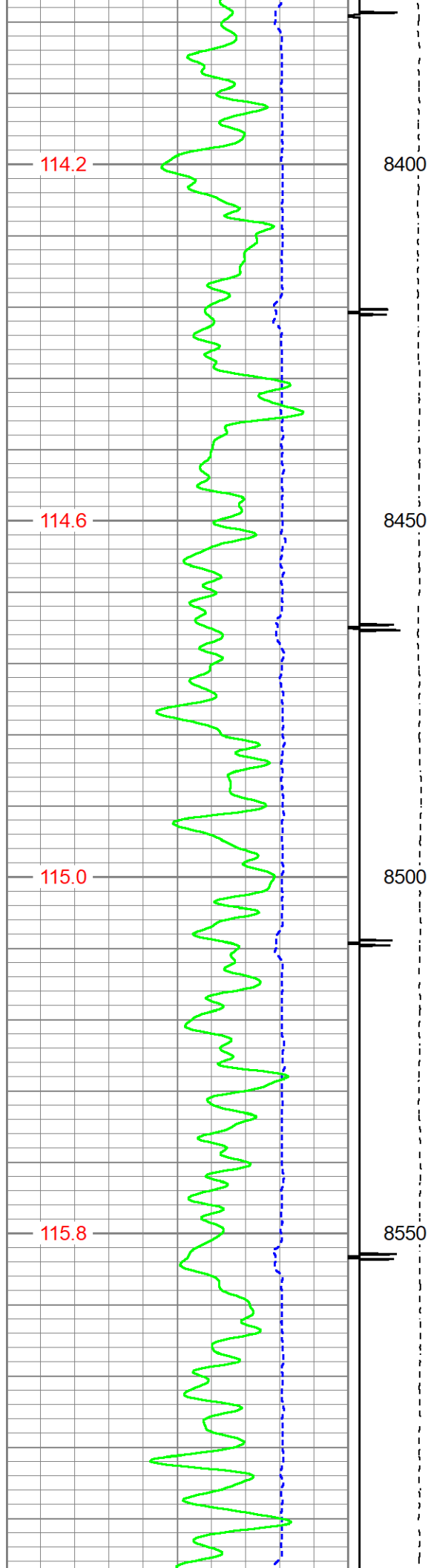
<<< Fold Here >>>
All interpretations are opinions based on inferences from electrical or other measurements and we cannot and do not guarantee the accuracy or correctness of any interpretation, and we shall not, except in the case of gross or willful negligence on our part, be liable or responsible for any loss, costs, damages, or expenses incurred or sustained by anyone resulting from any interpretation made by any of our officers, agents or employees. These interpretations are also subject to our general terms and conditions set out in our current Price Schedule.
Comments
TOOLS RUN AS PER TOOLSTRING DIAGRAM TOOLSTRING CENTRALIZED VIA 4 X GEMCO CENTRALIZERS LOG CORRELATED TO MARKER JOINT @ 9,647FT - 9,657FT THANK YOU FOR USING KLX ENERGY SERVICES

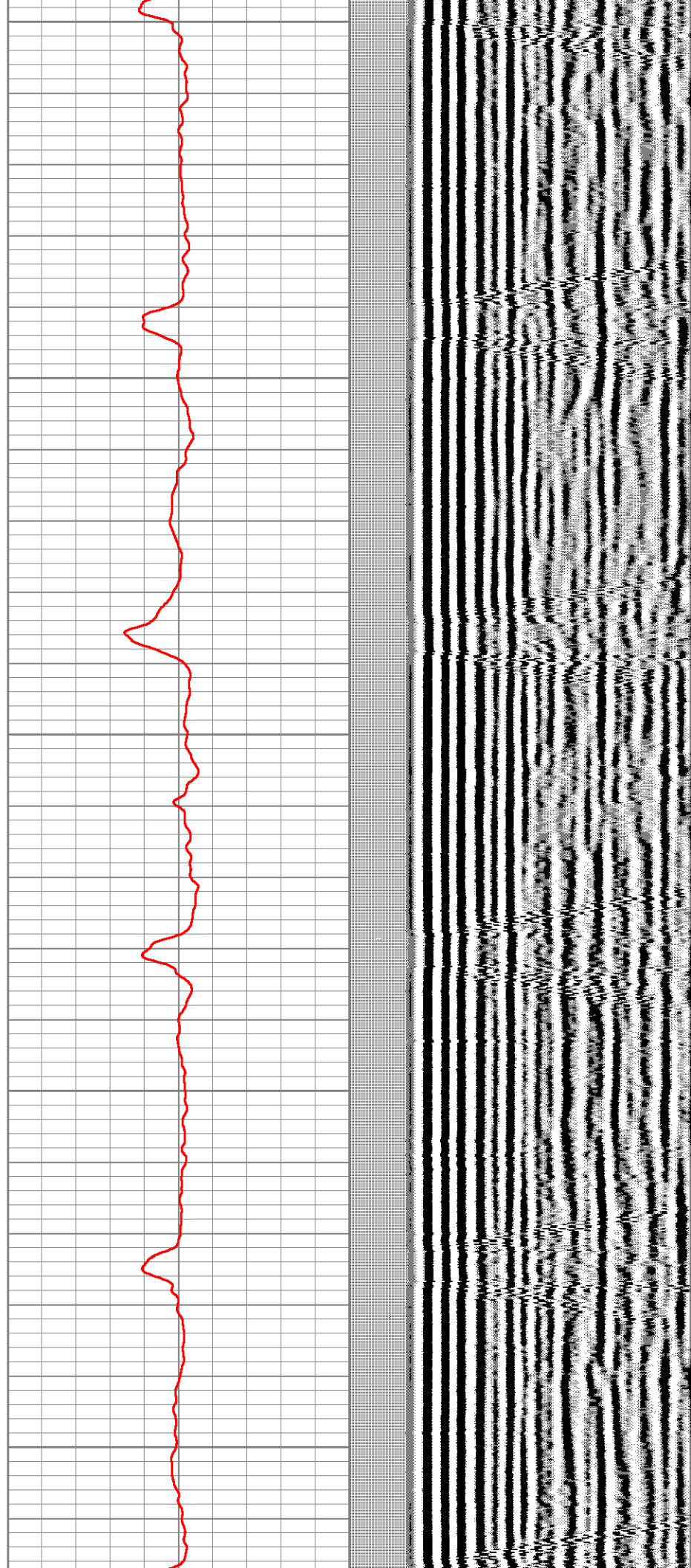
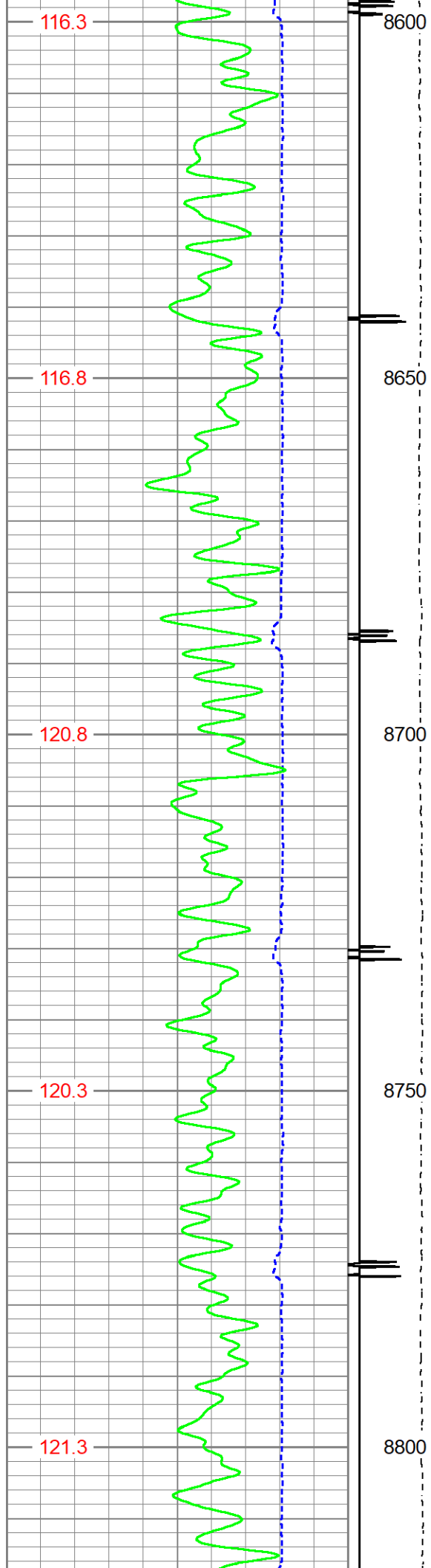


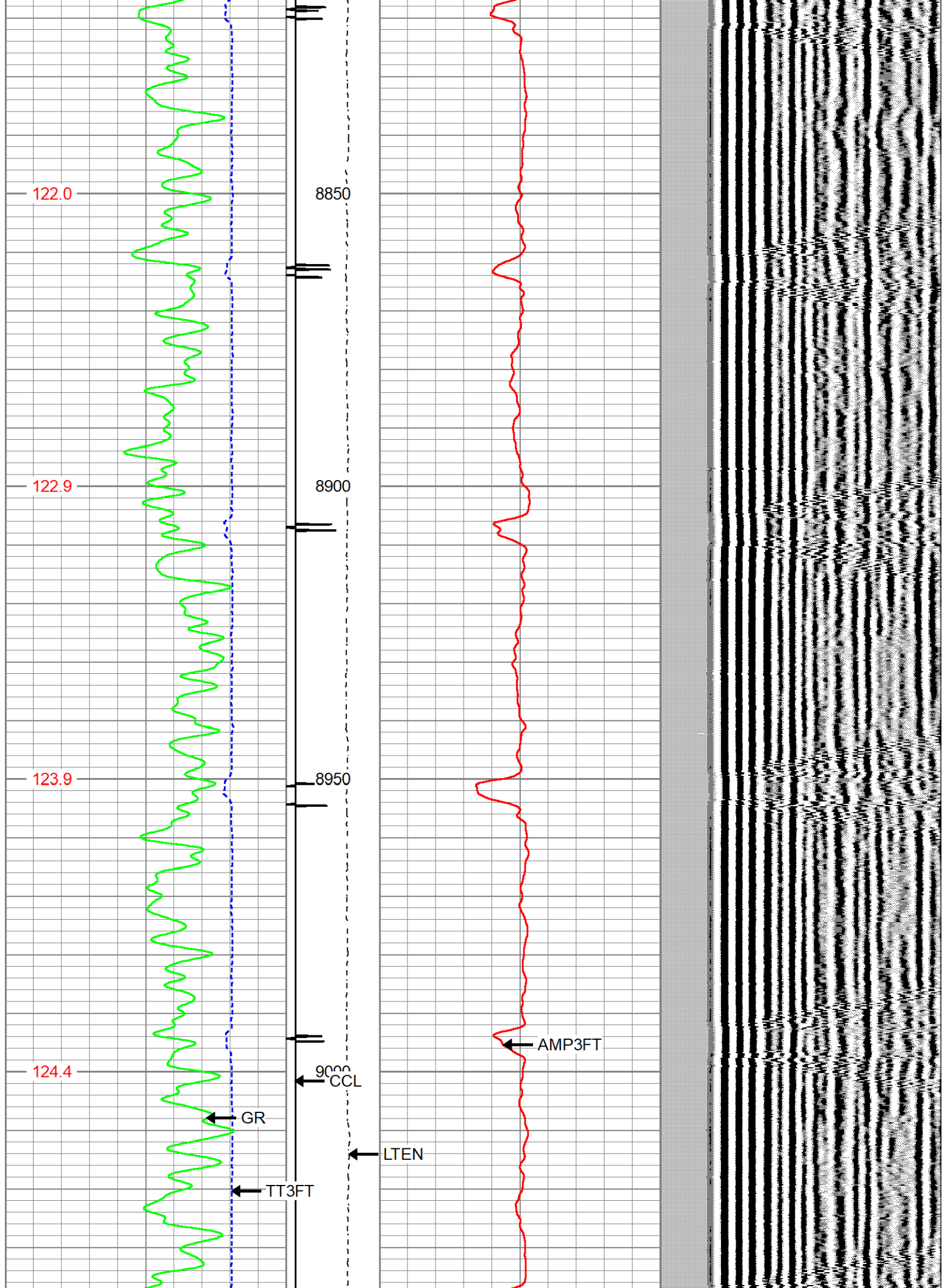
Database File	gw_cbl_022519_1.db									
Dataset Pathname	run1cbl/pass7									
Presentation Format	cbl_cs									
Dataset Creation	Mon Feb 25 20:40:32 2019									
Charted by	Depth in Feet scaled 1:240									
420	TT3FT (usec)	220	CCL	0	Amplitude (mV)	100	200	Variable Density (usec)	1200	
0	Gamma Ray (GAPI)	150	Line Tension	0	Amplified Amplitude (mV)	10				
Temp			0	(lb)2000						
(degF)										

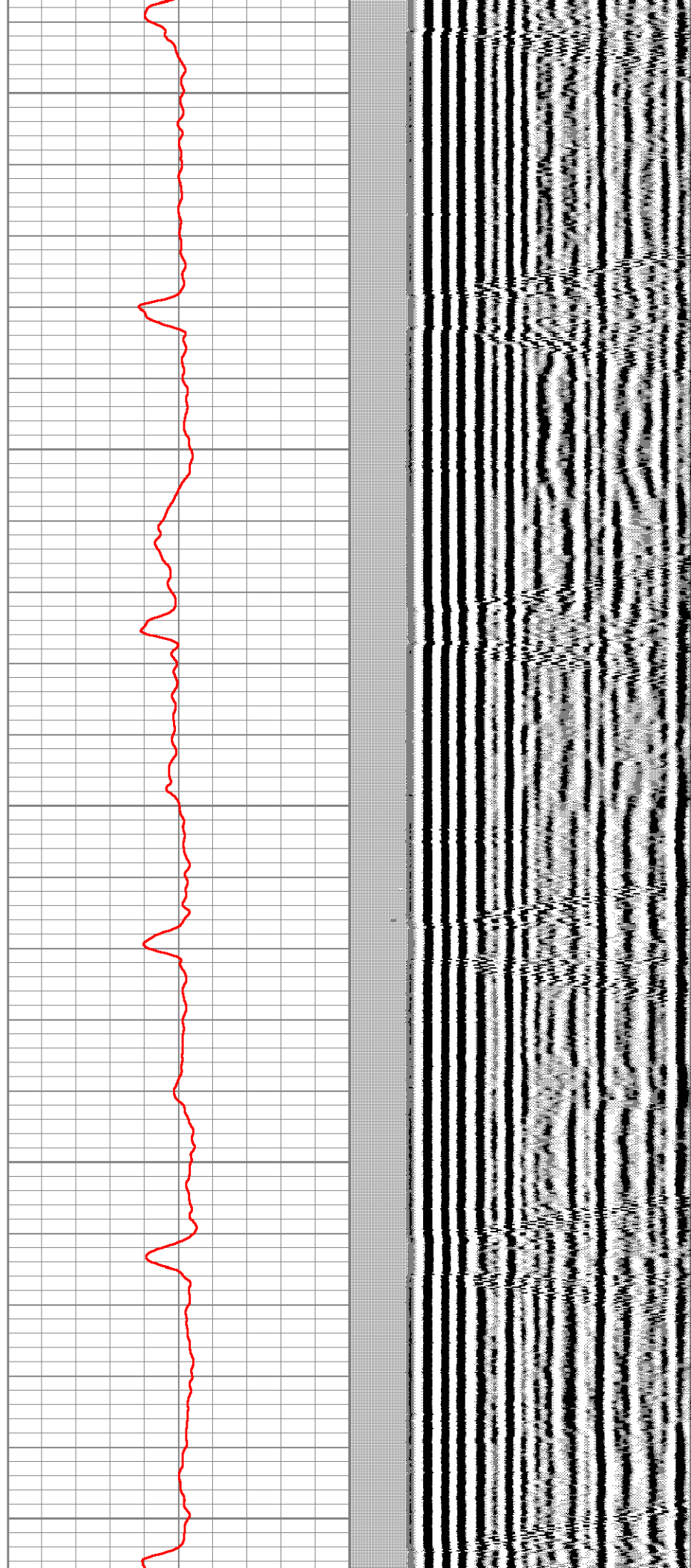
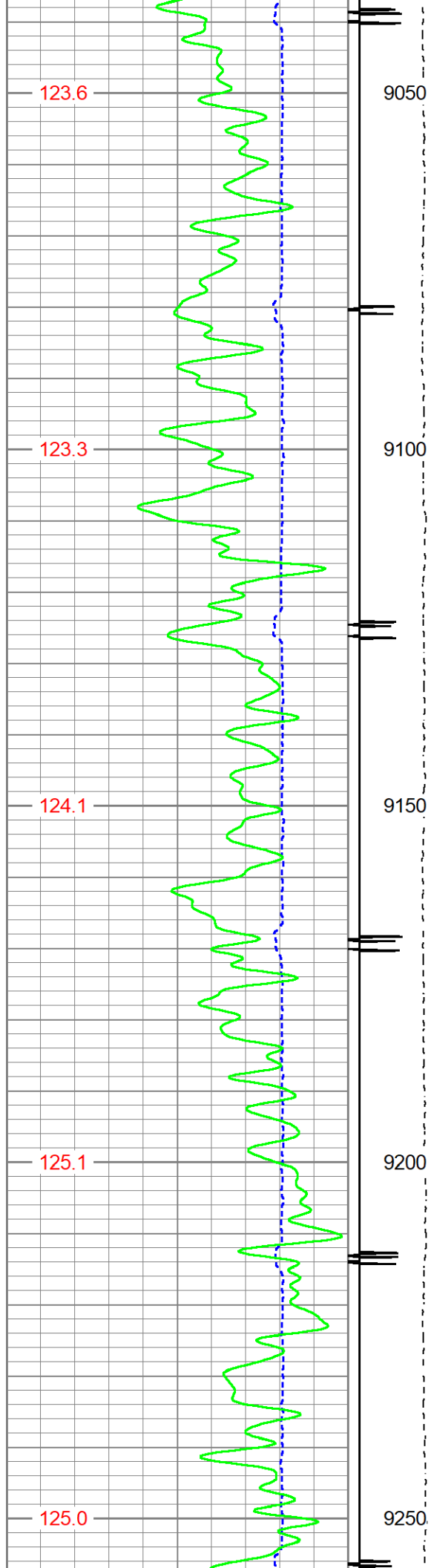


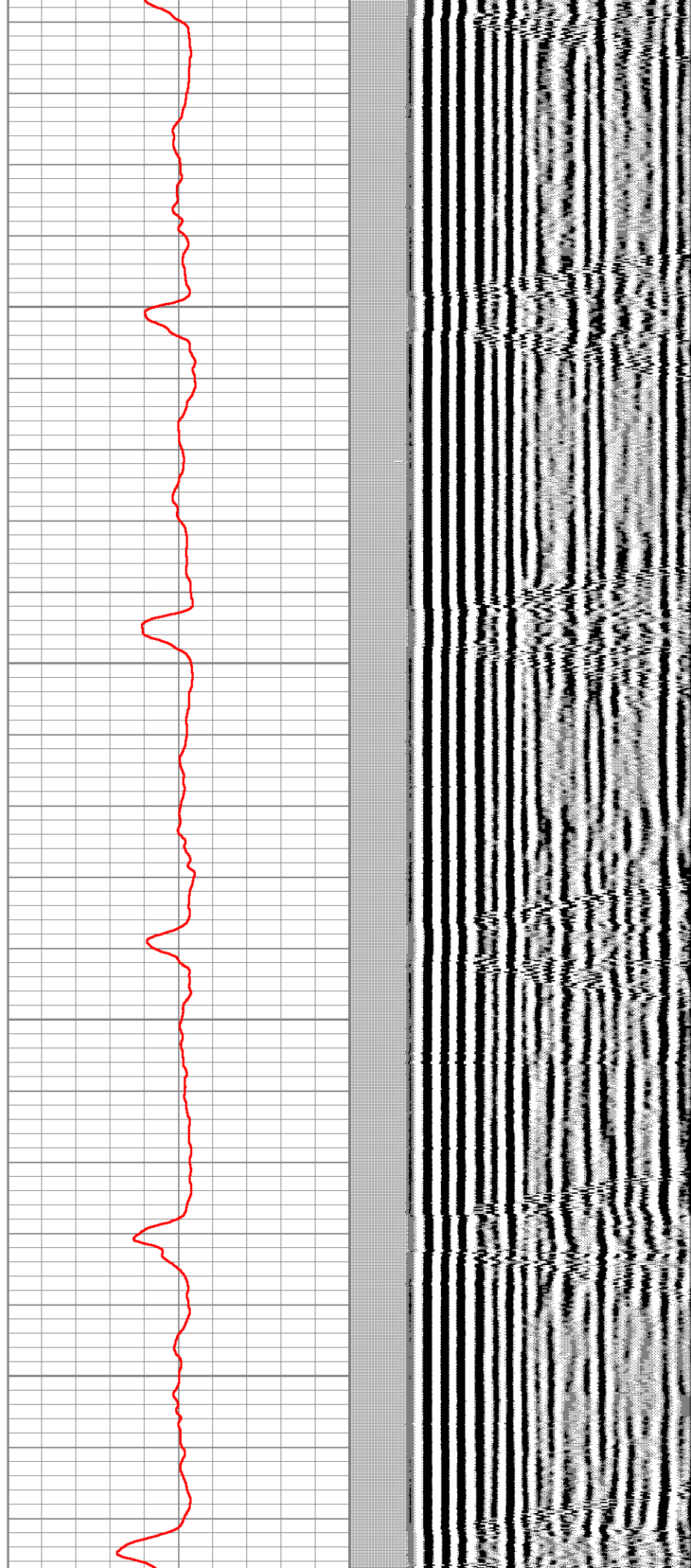
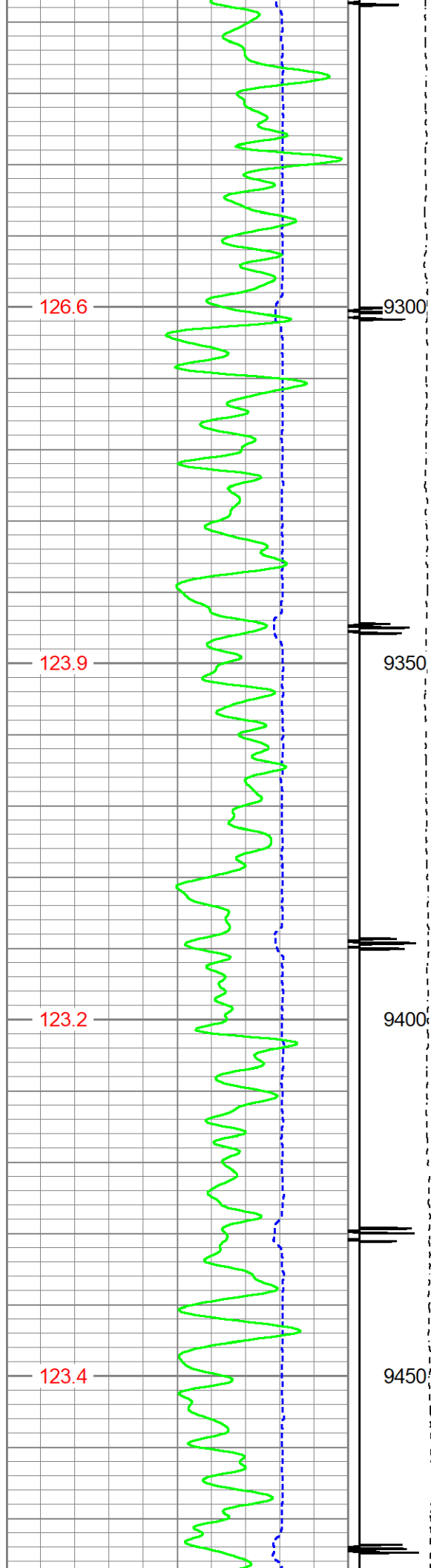


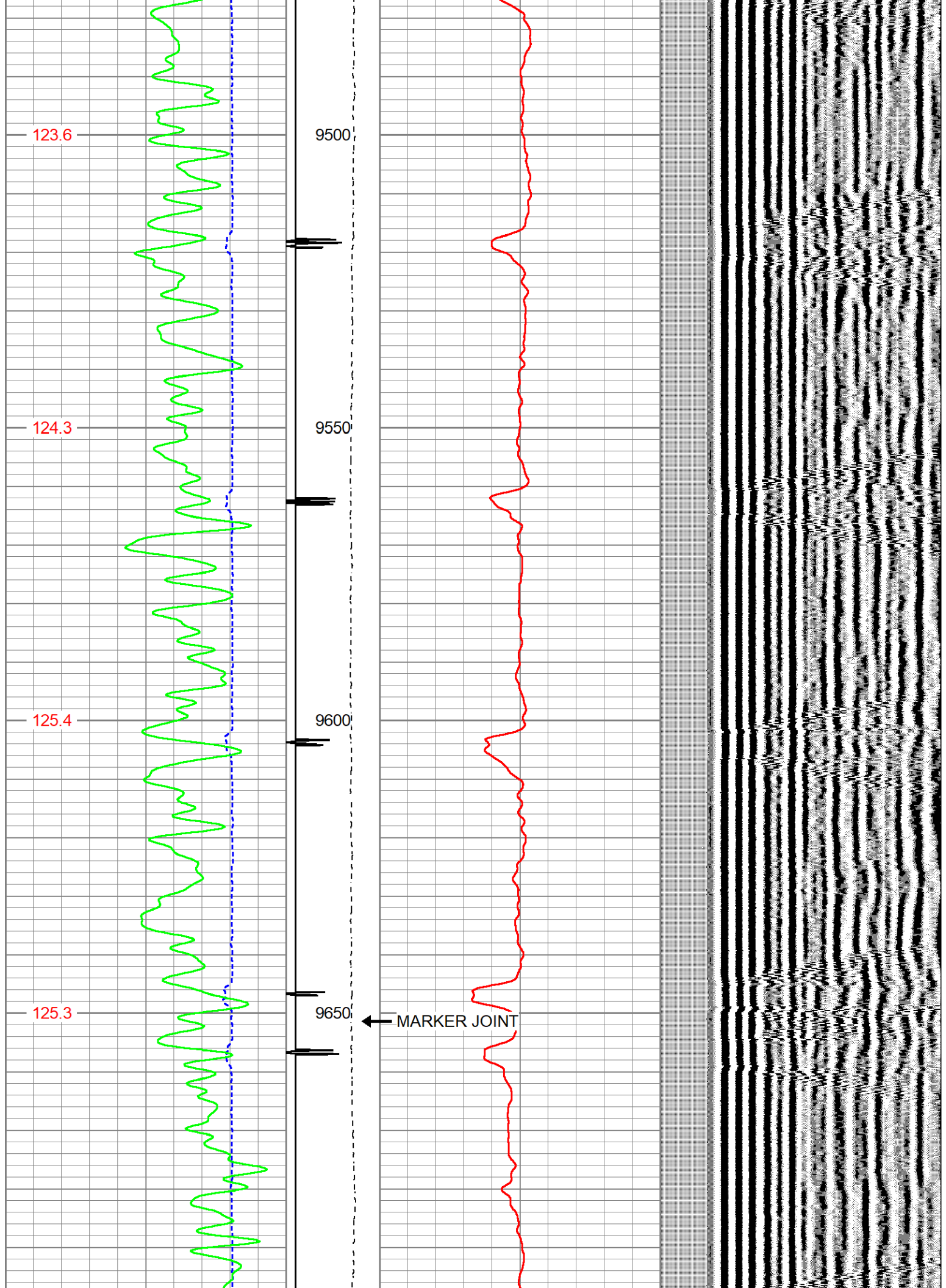


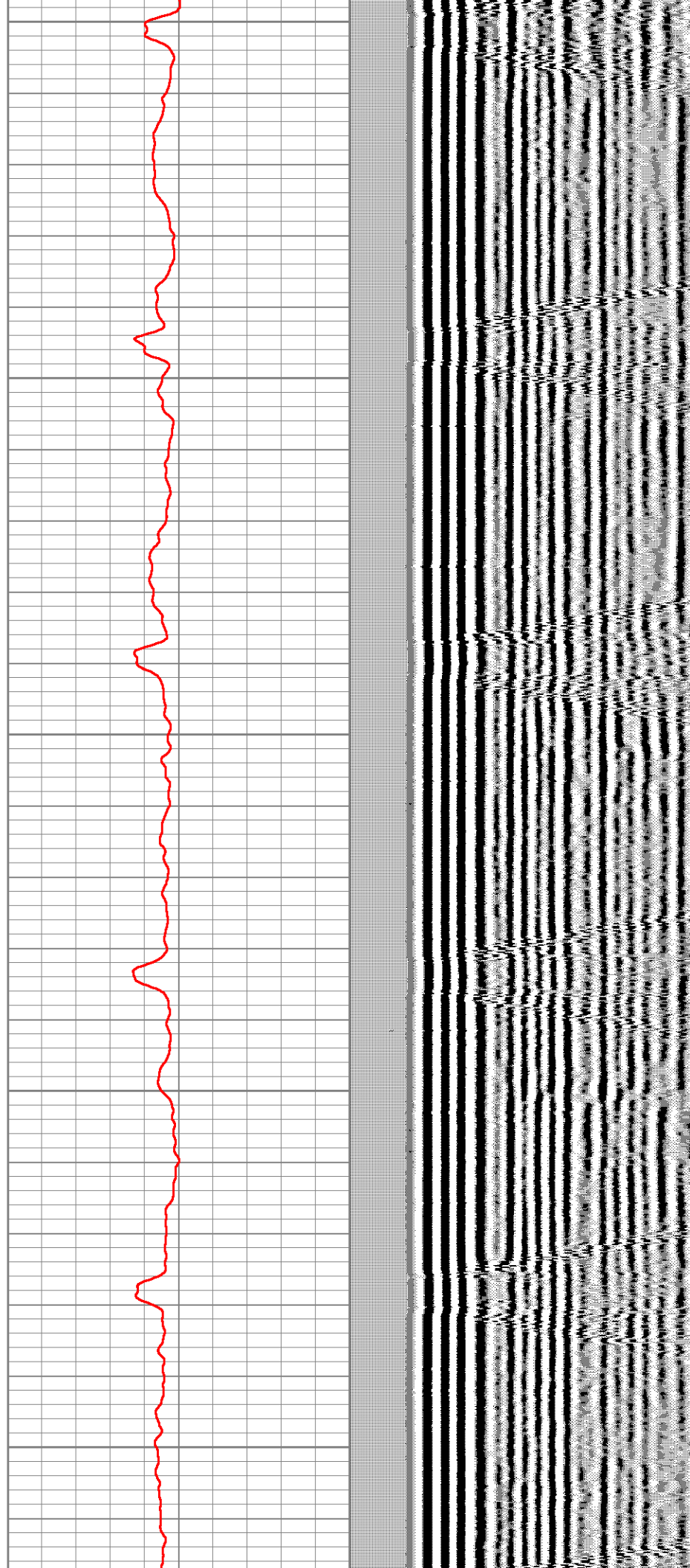
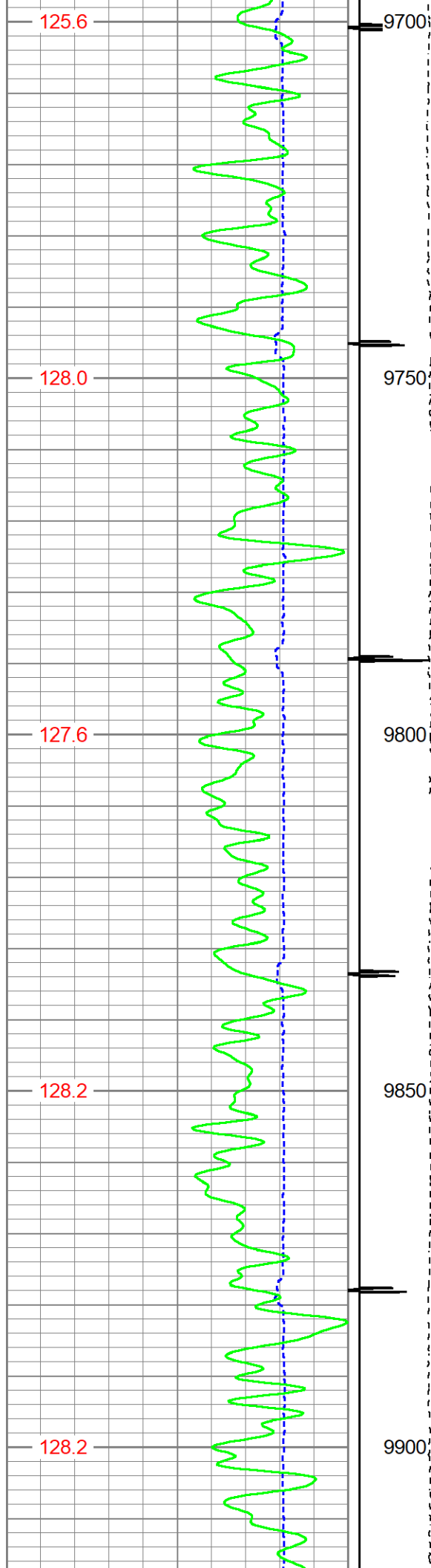


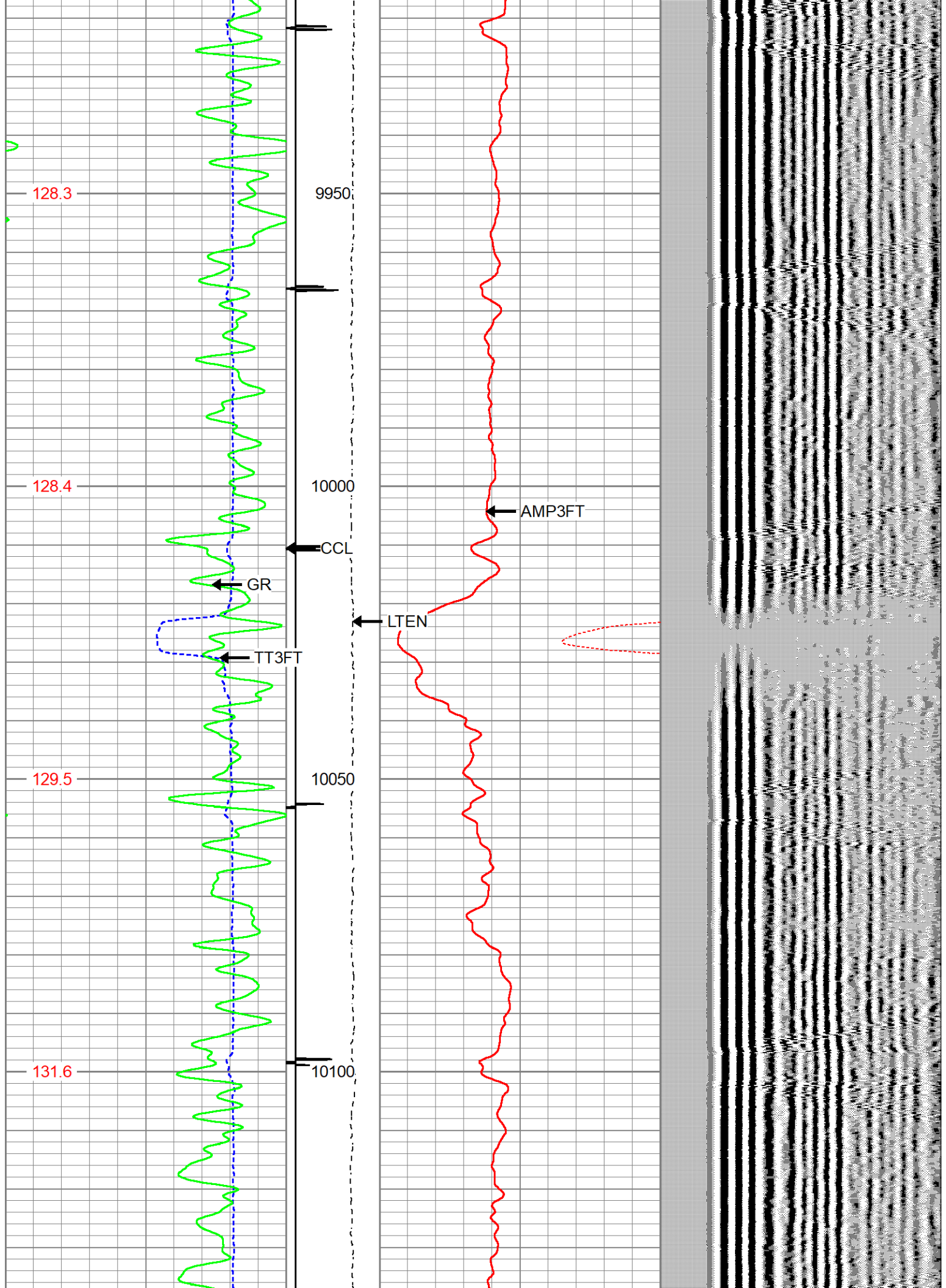


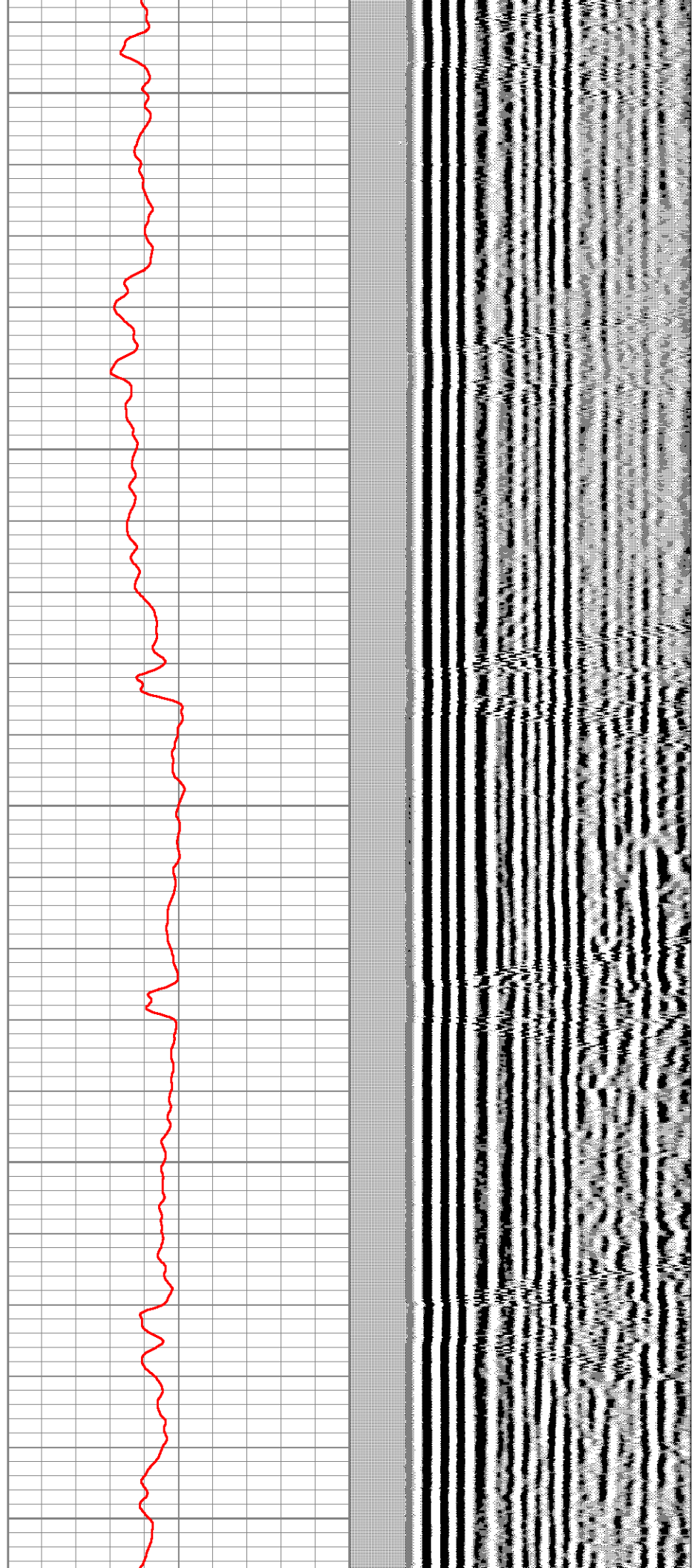
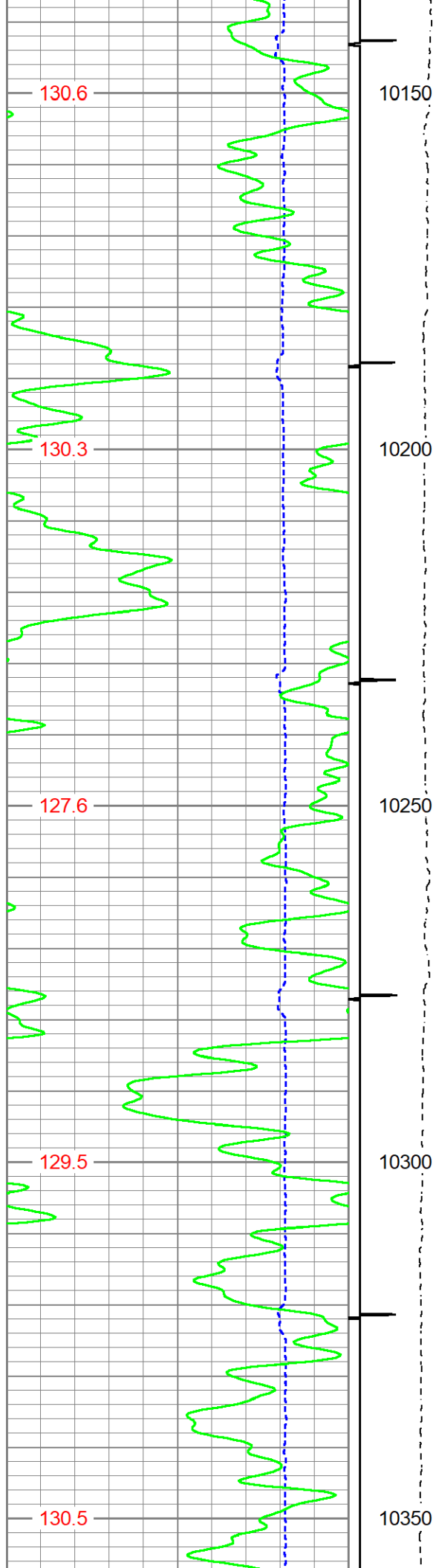


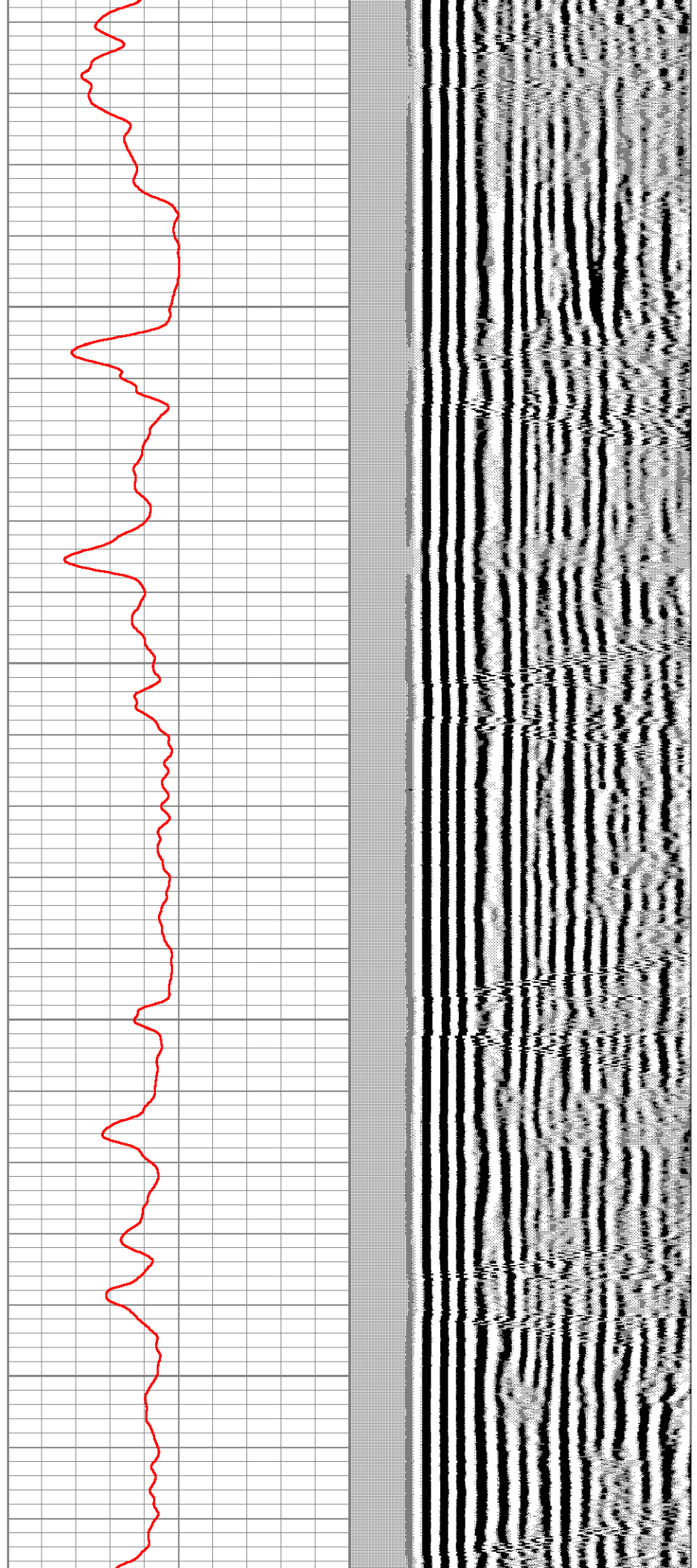
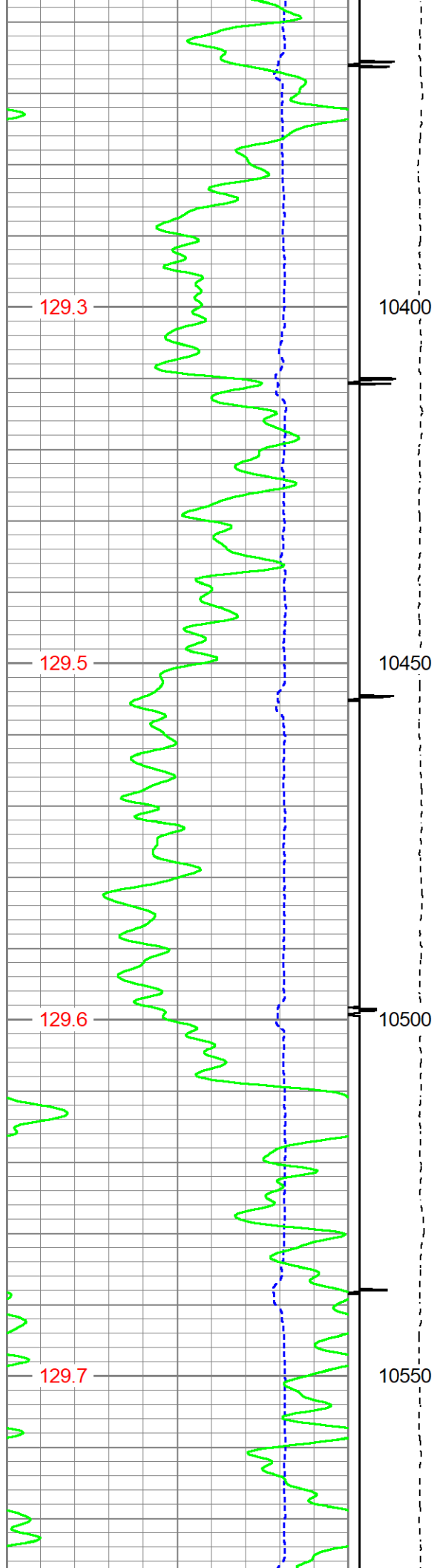


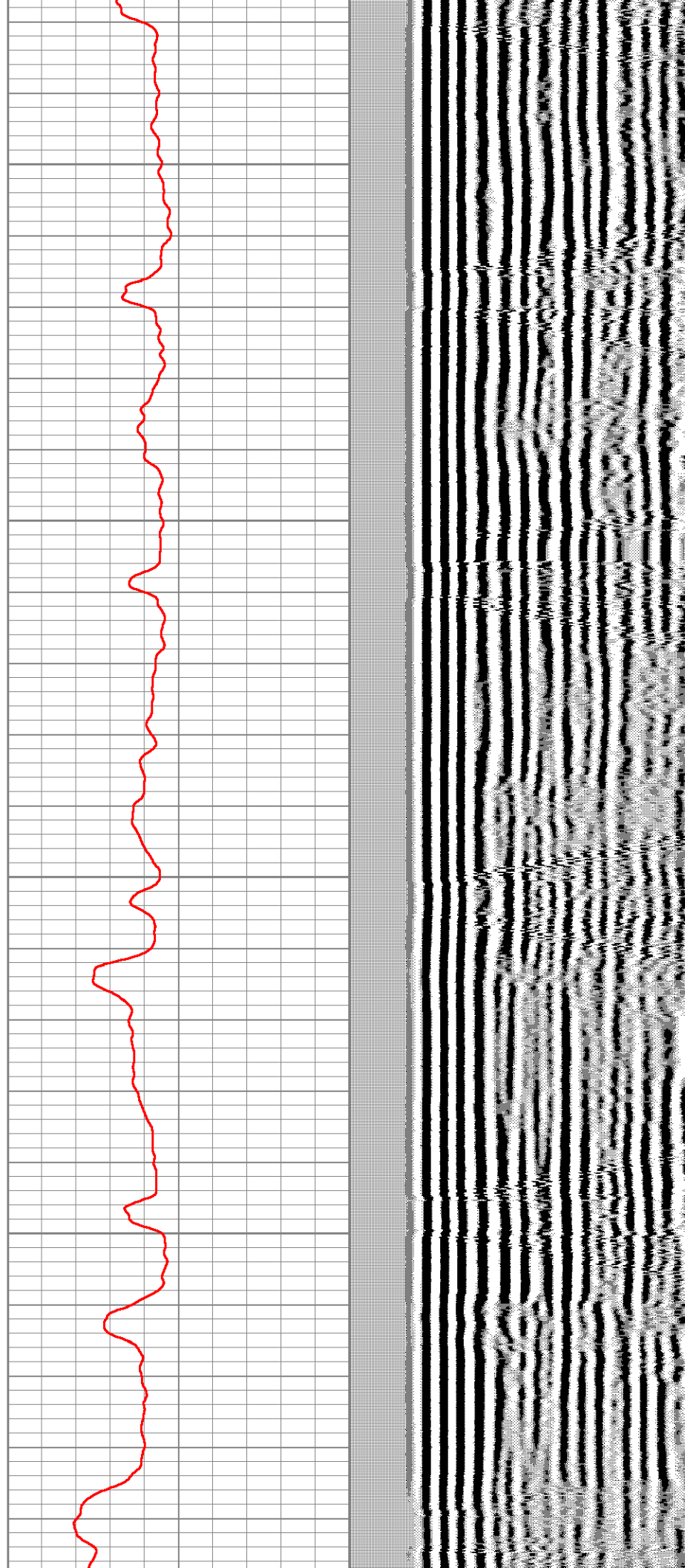
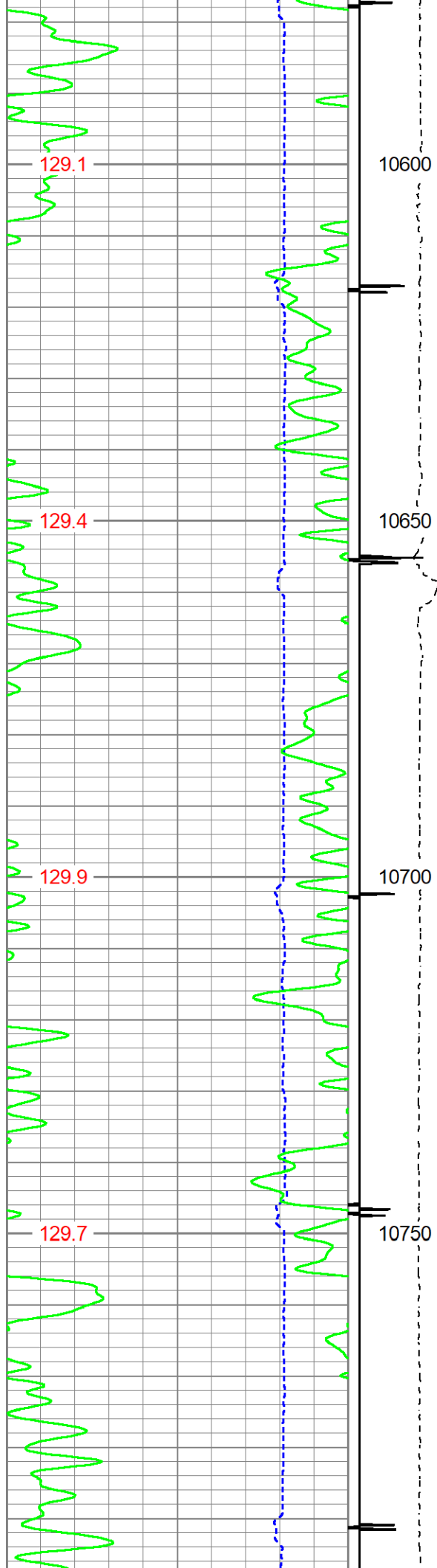


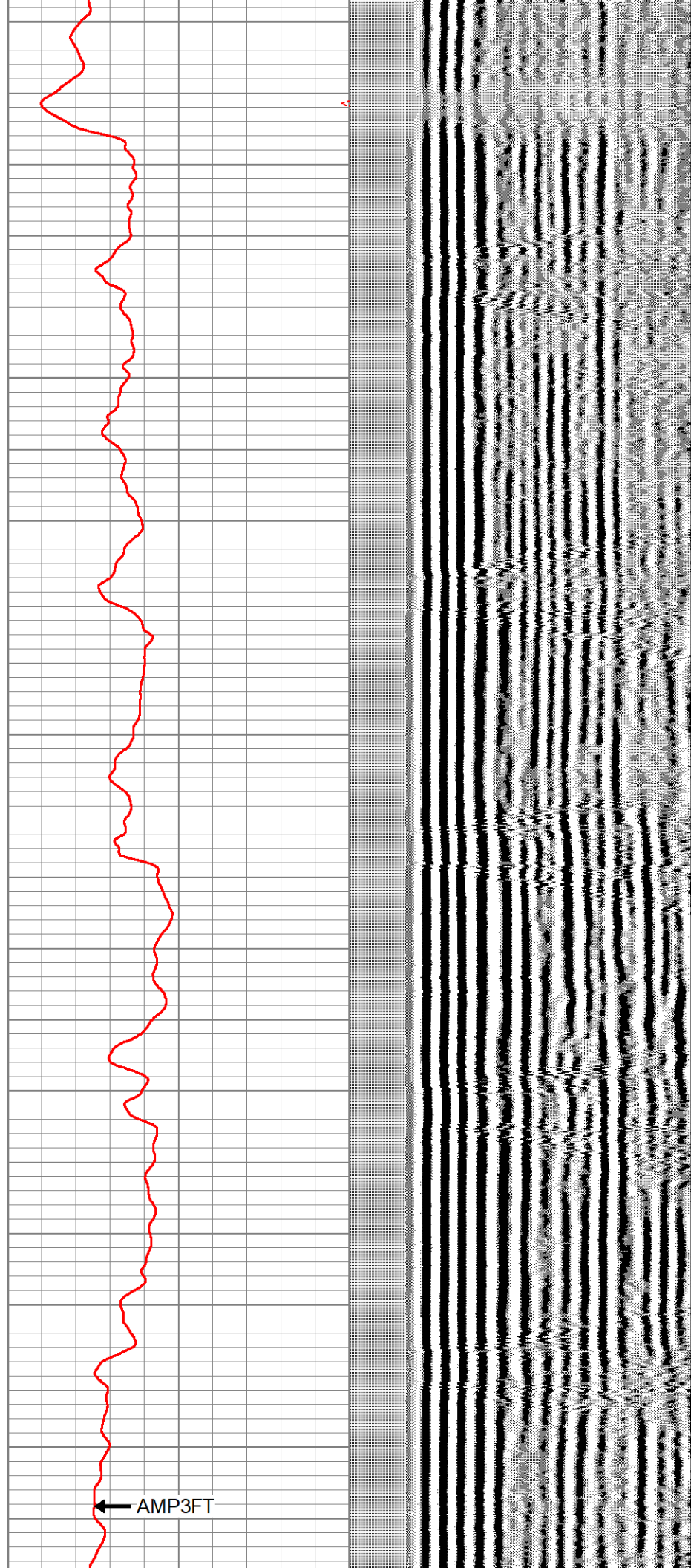
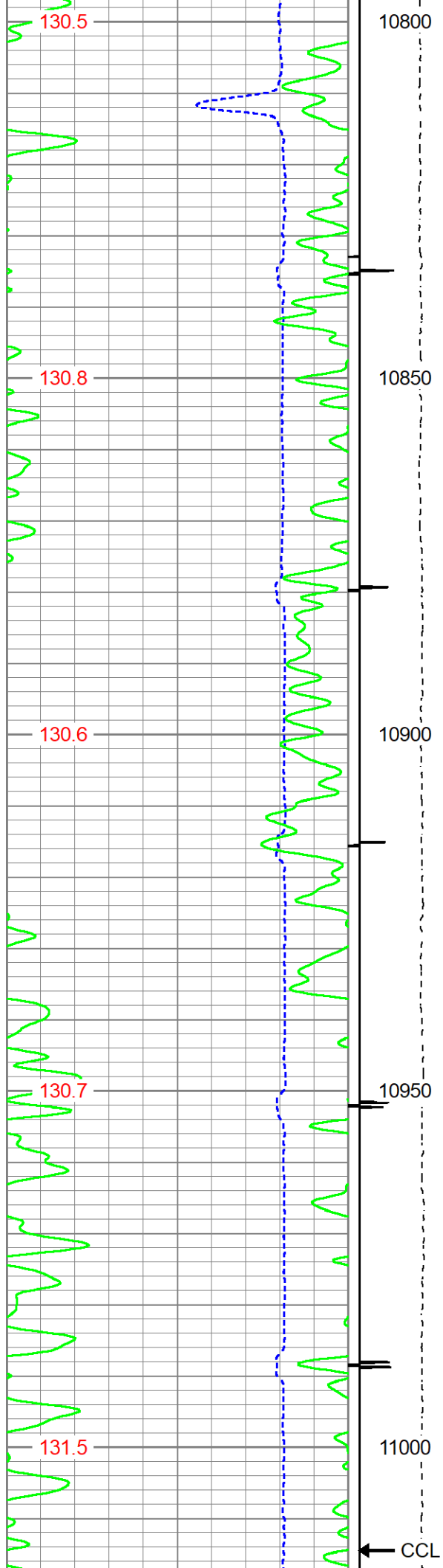


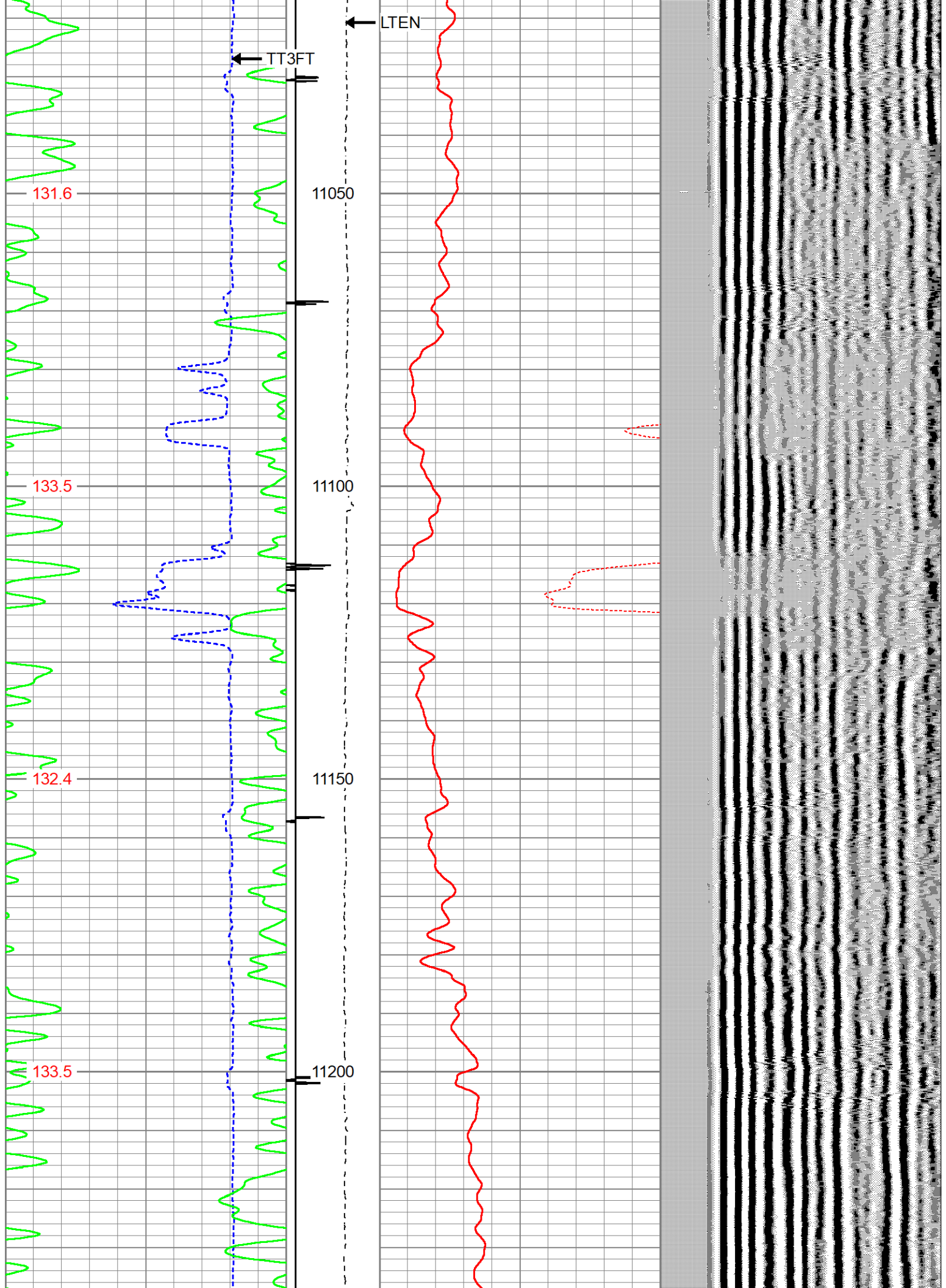


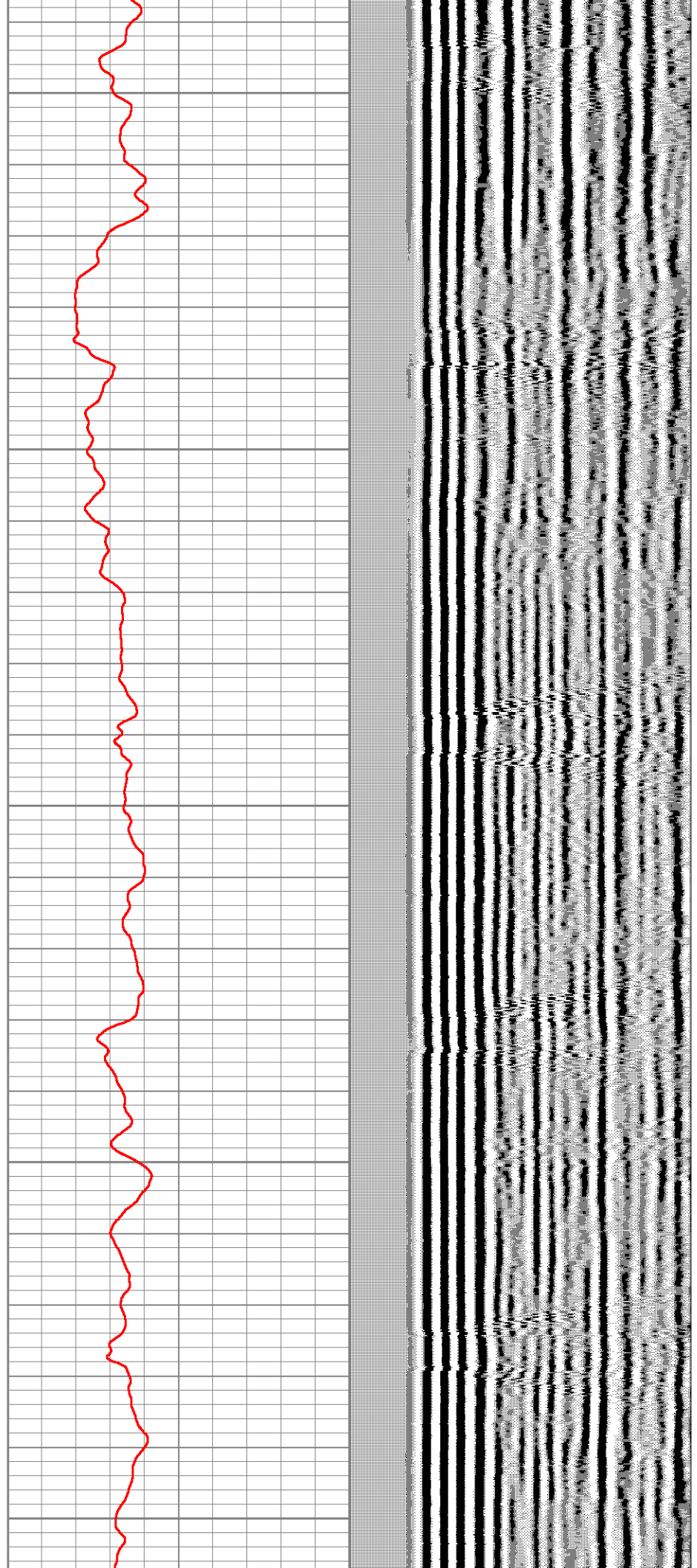
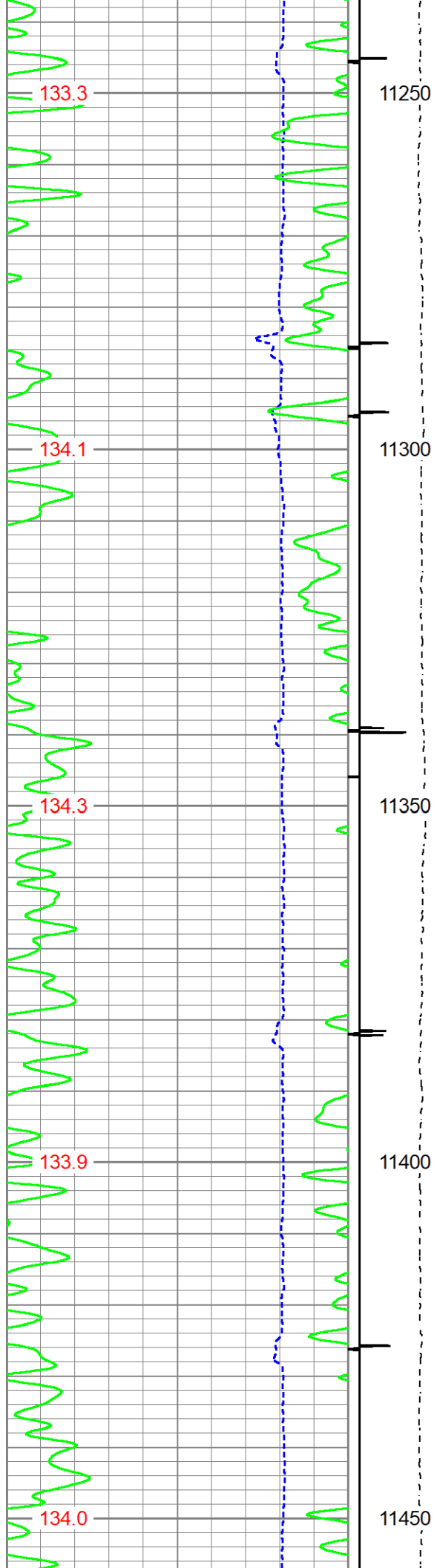


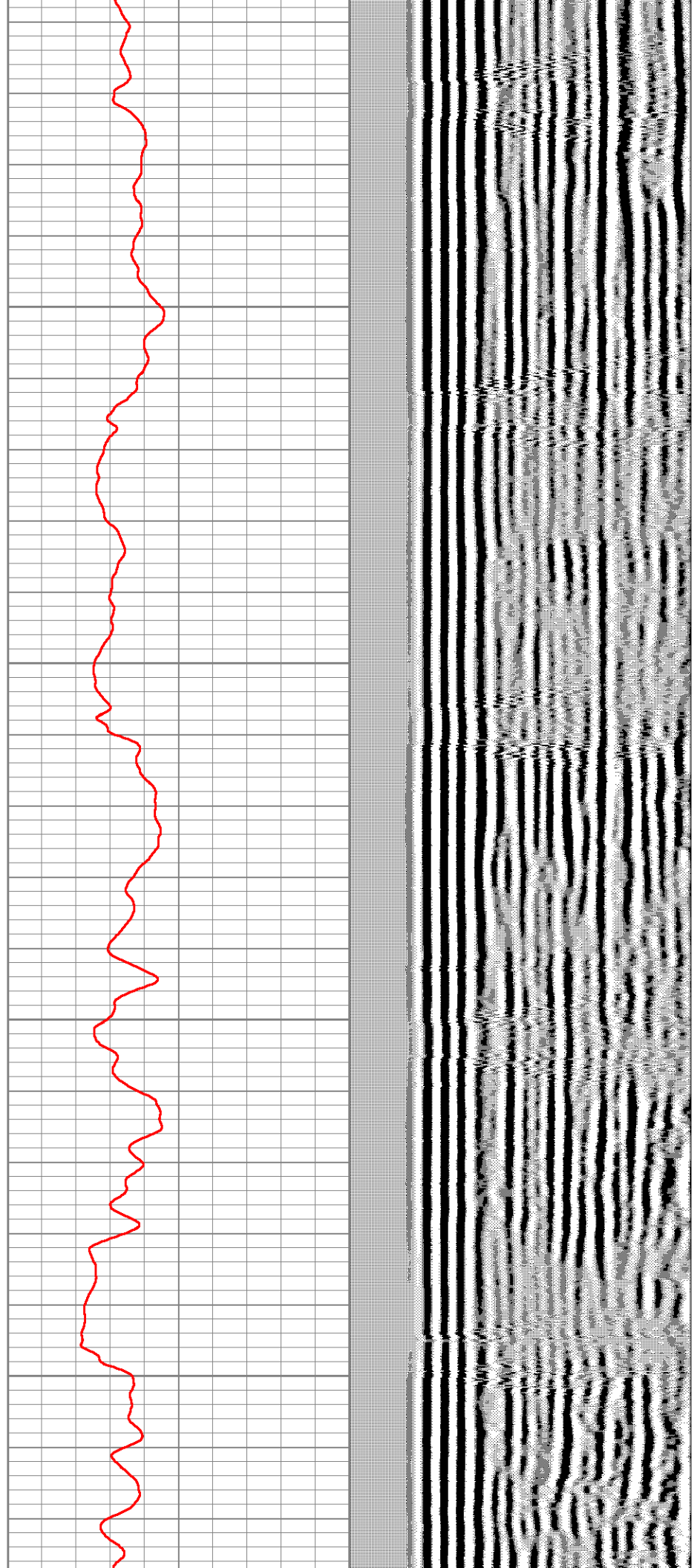
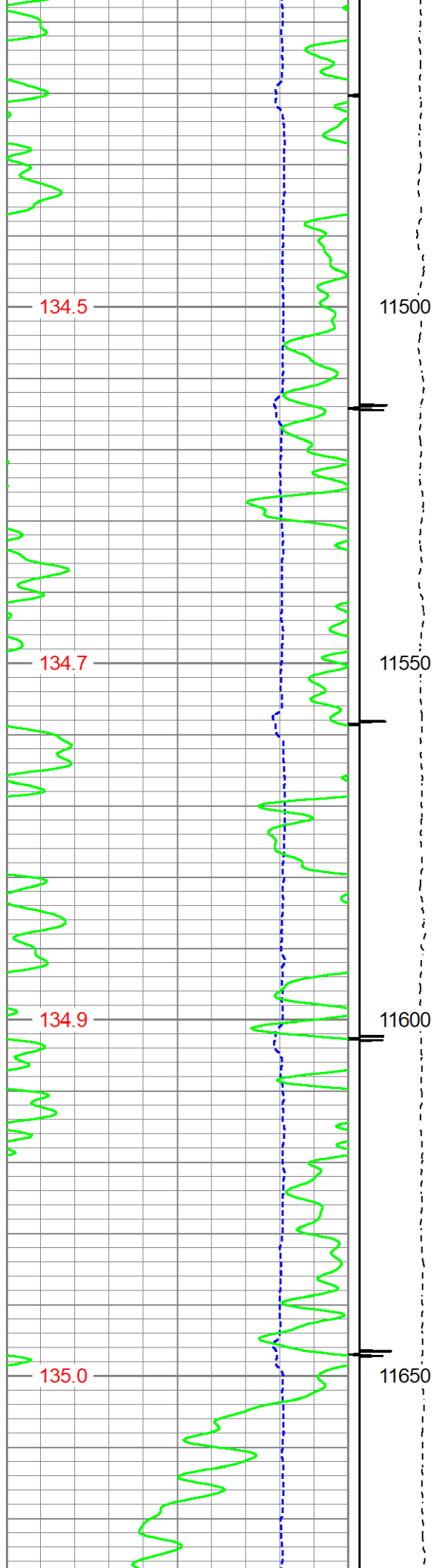


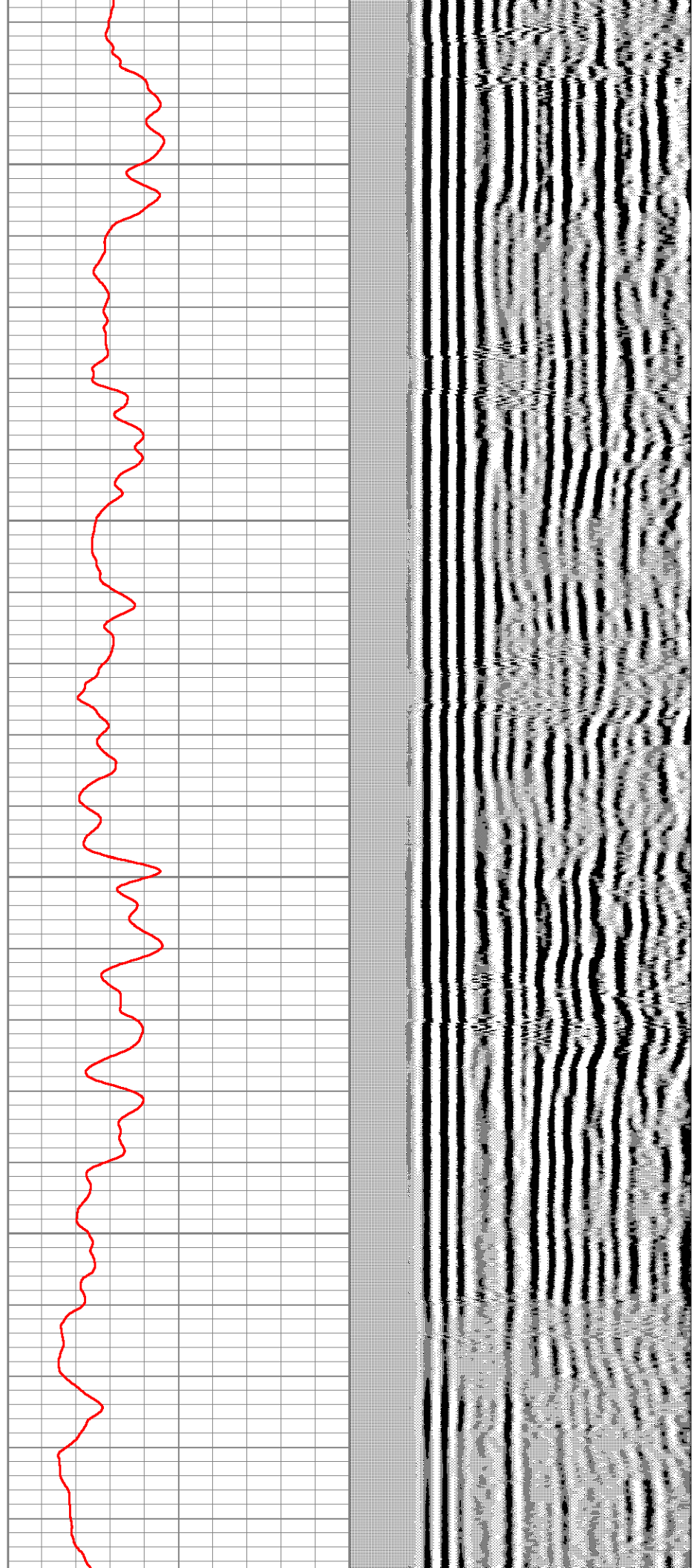
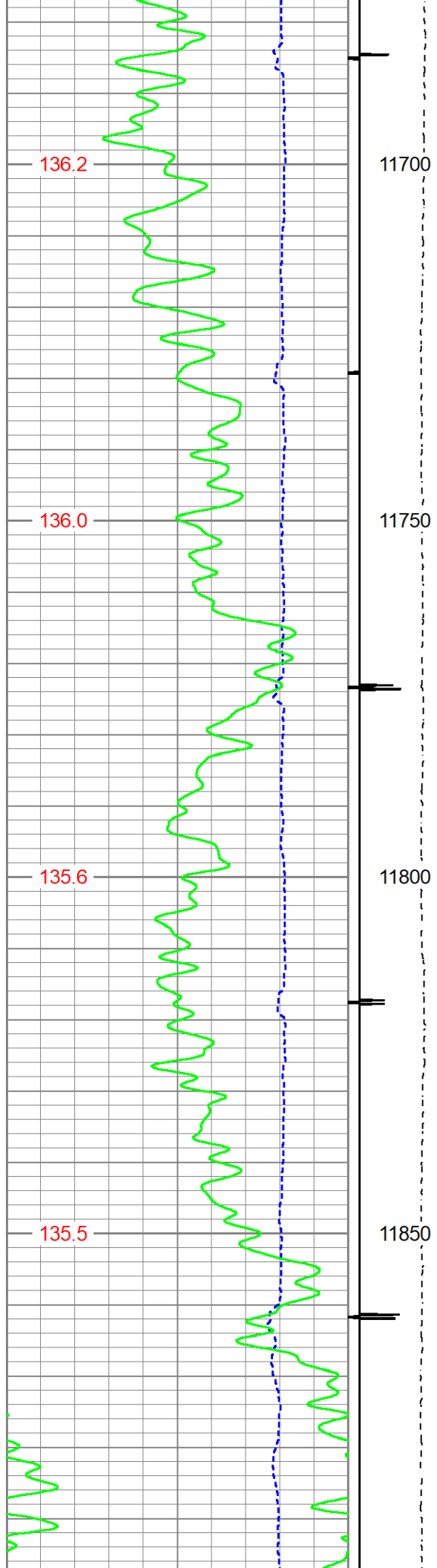


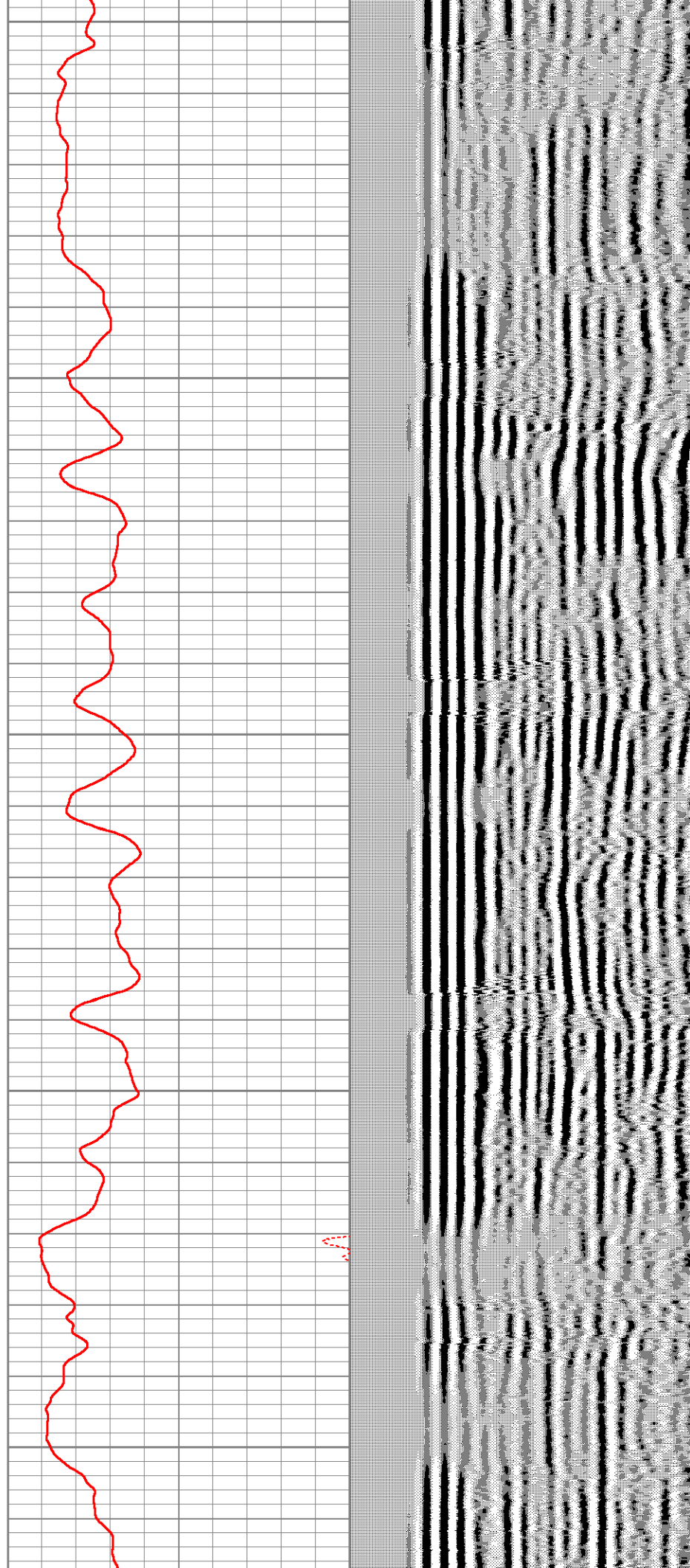
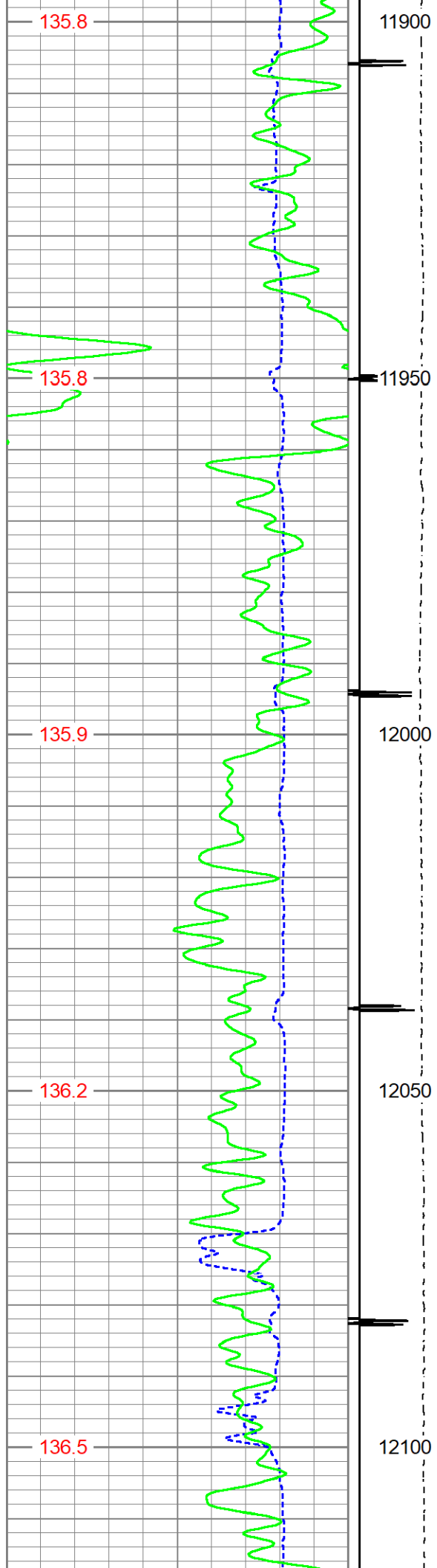


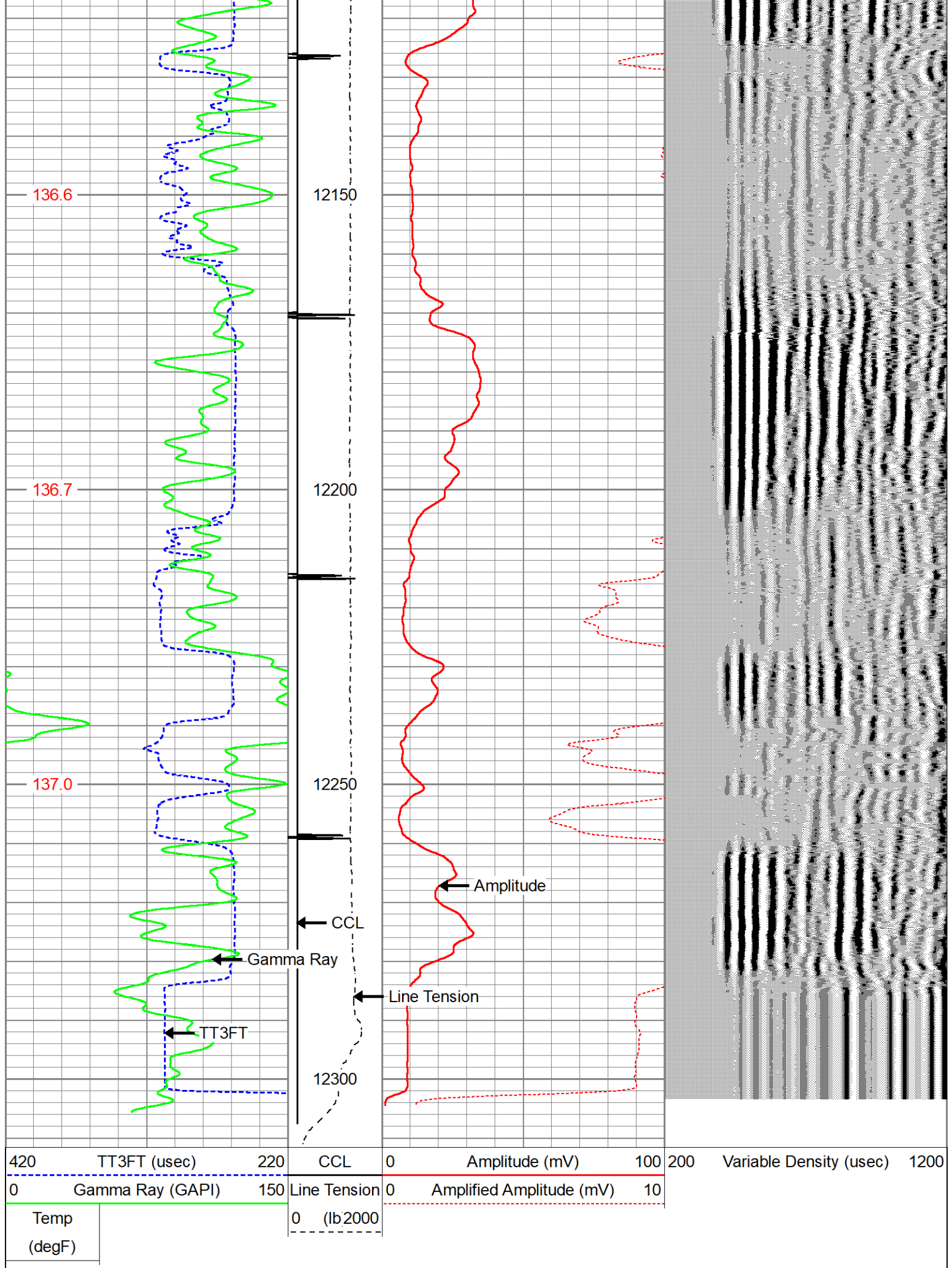










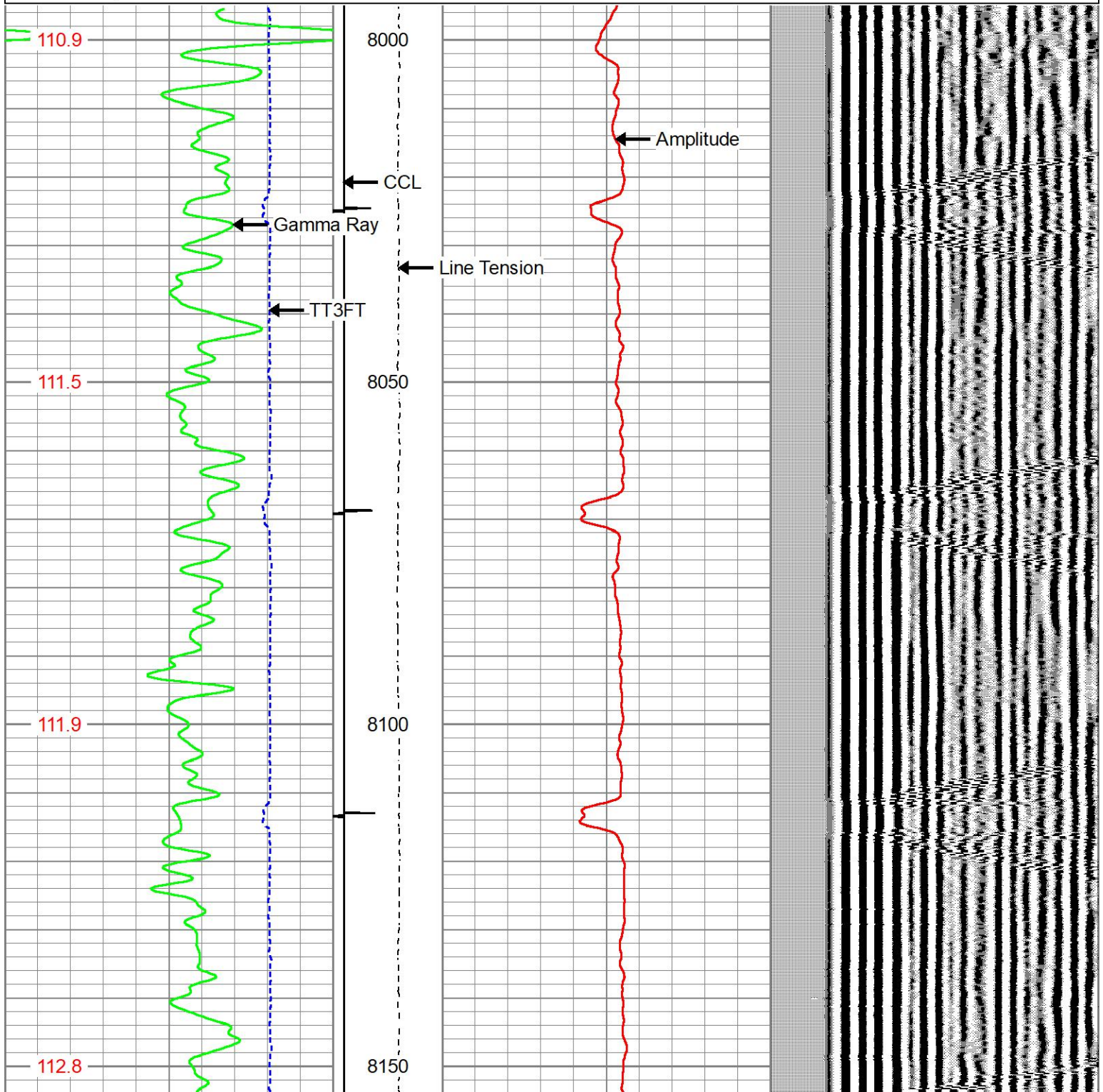


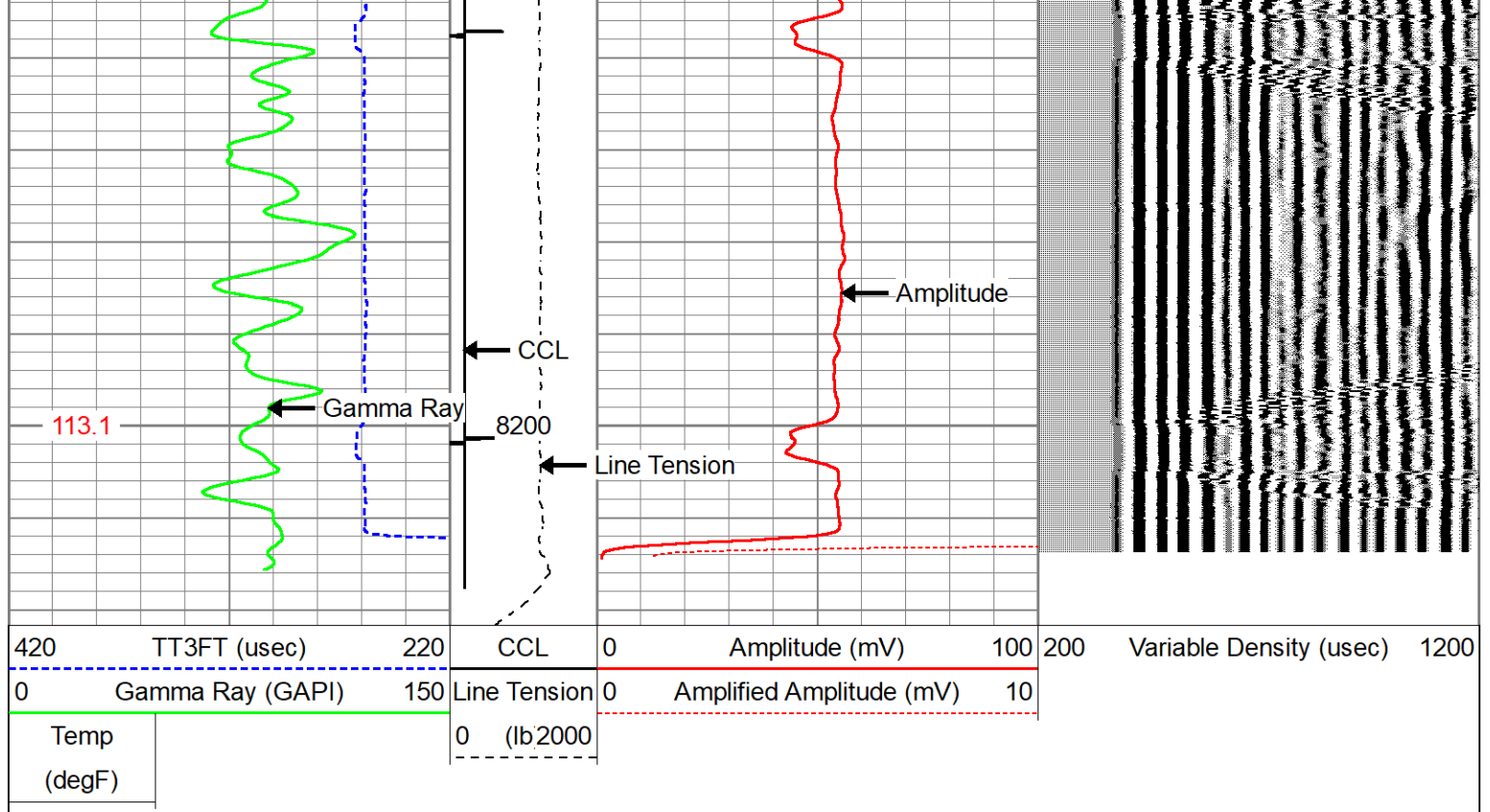


REPEAT PASS - 5 INCH

Database File gw_cbl_022519_1.db
Dataset Pathname run1cbl/pass8
Presentation Format cbl_cs
Dataset Creation Mon Feb 25 21:29:43 2019
Charted by Depth in Feet scaled 1:240

420	TT3FT (usec)	220	CCL	0	Amplitude (mV)	100	200	Variable Density (usec)	1200
0	Gamma Ray (GAPI)	150	Line Tension	0	Amplified Amplitude (mV)	10			
Temp (degF)			0 (lb2000)						





Calibration Report			
Database File	gw_cbl_022519_1.db		
Dataset Pathname	run1cbl/pass7		
Dataset Creation	Mon Feb 25 20:40:32 2019		
Gamma Ray Calibration Report			
Serial Number:	FW1401-53		
Tool Model:	Probe275		
Performed:	(Not Performed)		
Calibrator Value:	1.0	GAPI	
Background Reading:	0.0	cps	
Calibrator Reading:	1.0	cps	
Sensitivity:	1.0000	GAPI/cps	
Segmented Cement Bond Log Calibration Report			
Serial Number:	FW1304-125		
Tool Model:	Probe 2.75 Radii W/Temp		
Calibration Casing Diameter:	5.500	in	
Calibration Depth:	289.217	ft	

Master Calibration, performed Mon Feb 25 18:19:12 2019:

	Raw (v)		Calibrated (mv)		Results	
	Zero	Cal	Zero	Cal	Gain	Offset
3'	-0.001	0.460	1.000	71.921	153.757	1.206
CAL	0.001	0.636				
5'	-0.000	0.427	1.000	71.921	166.110	1.012
SUM						
S1	0.019	0.429	0.000	71.921	175.512	-3.314
S2	-0.001	0.448	0.000	71.921	160.203	0.111



S2	-0.001	0.474	0.000	71.921	151.760	0.017
S3	-0.000	0.490	0.000	71.921	146.696	0.064
S4	-0.001	0.492	0.000	71.921	146.078	0.100
S5	-0.001	0.475	0.000	71.921	151.199	0.146
S6	-0.001	0.458	0.000	71.921	156.658	0.180
S7	-0.001	0.439	0.000	71.921	163.284	0.201
S8	-0.001	0.439	0.000	71.921	163.284	0.201

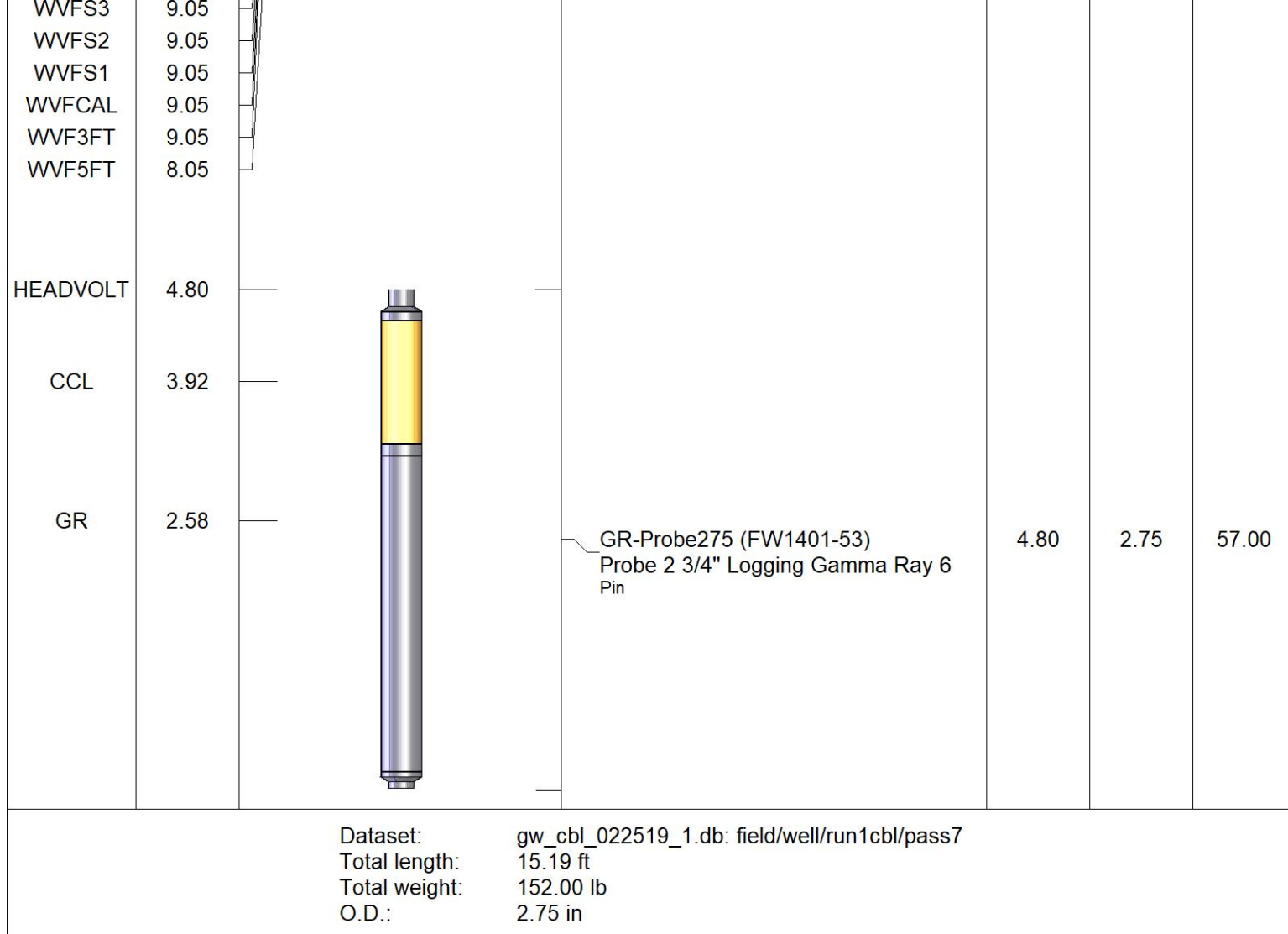
Internal Reference Calibration, performed (Not Performed):


	Raw (v)		Calibrated (v)		Results	
	Zero	Cal	Zero	Cal	Gain	Offset
CAL	0.000	0.000	0.001	0.636	1.000	0.000

Air Zero Calibration, performed (Not Performed):

	Raw (v)		Calibrated (v)		Results	
	Zero		Zero		Offset	
3'	0.000		0.000		0.000	
5'	0.000		0.000		0.000	
SUM						
S1	0.000		0.000		0.000	
S2	0.000		0.000		0.000	
S3	0.000		0.000		0.000	
S4	0.000		0.000		0.000	
S5	0.000		0.000		0.000	
S6	0.000		0.000		0.000	
S7	0.000		0.000		0.000	
S8	0.000		0.000		0.000	

Sensor	Offset (ft)	Schematic	Description	Length (ft)	O.D. (in)	Weight (lb)
HeadVolt	14.13		CHD-Titan Titan 1 7/16" GO Cablehead	1.00	1.44	5.00
Temp	11.28					
WVFS8	9.05		RBT-Probe 2.75 Radii W/Temp (FW1304-125) Probe 2.75" Radial with Integral Temperature Sub	9.39	2.75	90.00
WVFS7	9.05					
WVFS6	9.05					
WVFS5	9.05					
WVFS4	9.05					



	Company	GREAT WESTERN OIL & GAS		
	Well	OTTESEN LE 06-351HNX		
	Field	WATTENBERG		
	County	WELD		
	State	CO	Country	USA