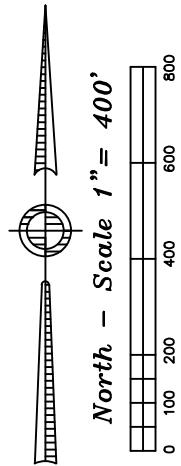
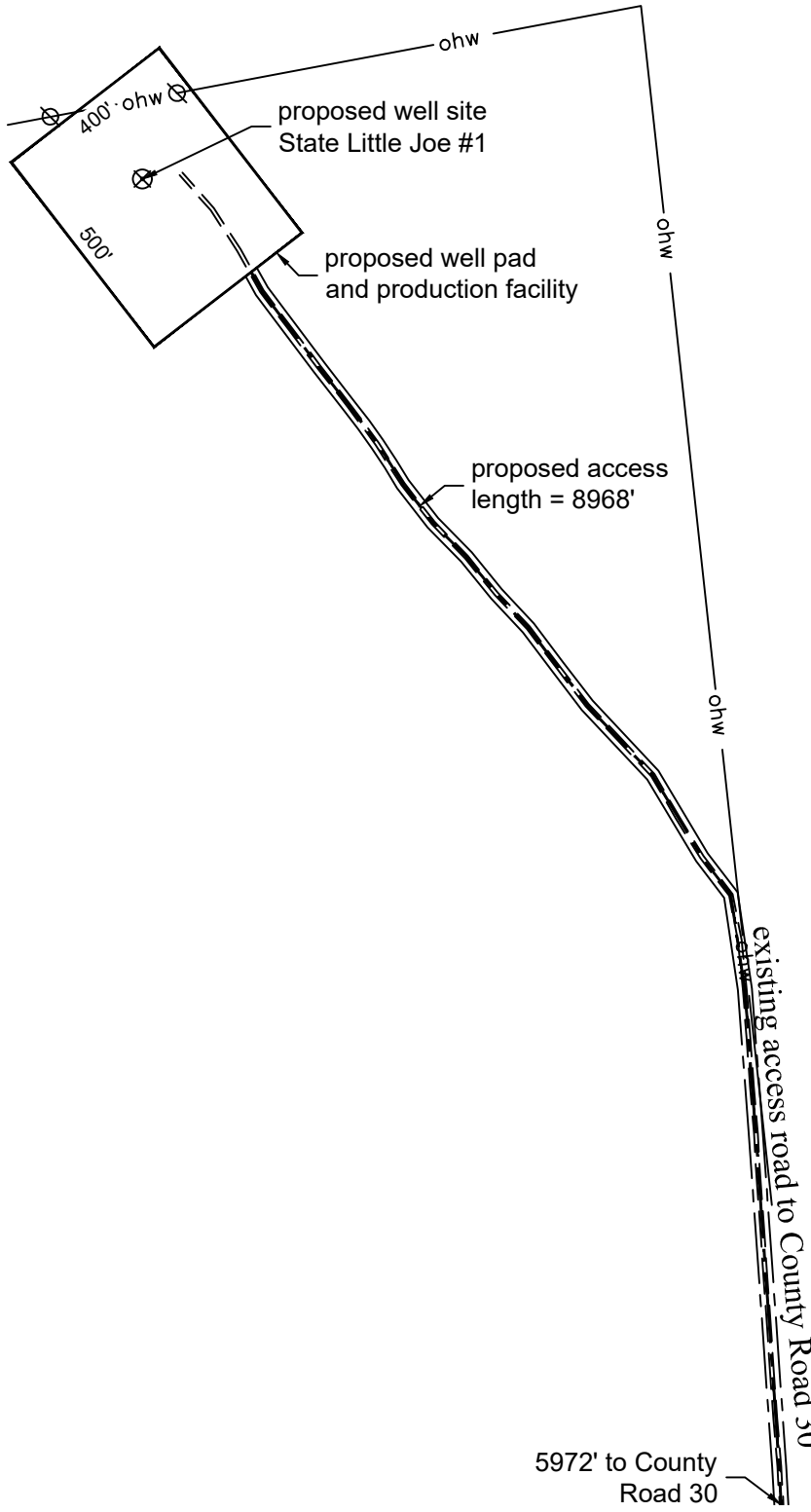


# Access Road Map



P:\Project\2019\19025\dwg\19025\_Acc.dwg August 07, 2019 - 10:23am

Well Name: <b>State Little Joe #1</b>	Field Date <b>7.24.2019</b>	Prepared for: <span style="float: right;">Project#: <b>19025.001</b></span> <b>St. Croix Operating, Inc.</b>
Section 28-T1N-R49W-6th PM, SE-NW	Party Chief <b>JF</b>	PLS Corporation 532 West 66th Street Loveland, Colorado 80538 970.669.2100 office - info@plscorporation.com
Washington County, Colorado	Proj. Manager <b>MDG</b>	
Drawing Date <b>8.7.2019</b>		