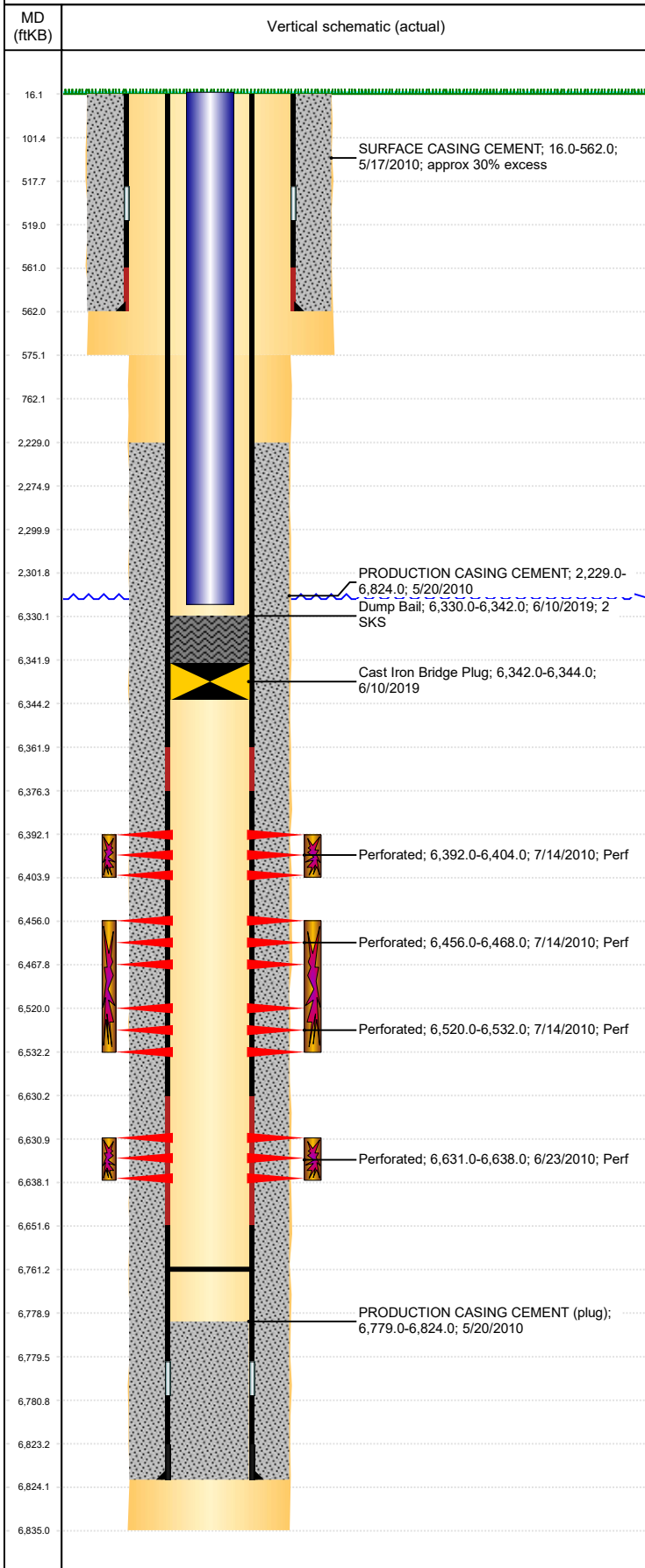


**Well Name: WELLS RANCH AE32-04**

VERTICAL, ORIGINAL HOLE, 8/22/2019 2:18:29 PM



Well Header									
API 05-123-30480			Business Unit DJ BASIN			District 15		Well Config VERTICAL	
KB - GL / MSL (ft... 16.00		Spud Date 5/16/2010		P & A Date		Well Production Status TA			SoRT Yes
Comment THIS WELL FRAC'D INTO WELLS RNCH AE32-03 7/2010 7/2010.									
Surface Location (Congressional)									
Qtr 3 NW	Qtr 4 NW	Section 32	Twonshp 6	Twonsh... N	Range 62	Rng E/... W	Actual Latitude (°) 40.44862501	Actual Longitude (°) -104.35424644	
Wellbore Sections									
Section Des			Size (in)			Act Top, MD (ftKB)		Act Btm, MD (ftKB)	
SURFACE			12 1/4			16		575	
PRODUCTION			7 7/8			575		6,835	
Casing Strings									
Csg Des			Run Date		OD (in)	Wt/Len (lb/ft)	Grade	Top, MD (ftKB)	MD (ftKB)
Surface			5/17/2010		8 5/8	24.00	J-55	16.0	562.0
Production			5/20/2010		4 1/2	11.60	M-80	16.0	6,824.0
Cement									
Des					Start Date		Top (ftKB)		Btm (ftKB)
SURFACE CASING CEMENT					5/17/2010		16.0		562.0
PRODUCTION CASING CEMENT					5/20/2010		2,229.0		6,824.0
Dump Bail					6/10/2019		6,330.0		6,342.0
Zone Statuses									
Zone Name		Status Date	Status	Fluid Type	Job			Prod Method	
CODELL		7/16/2010	PR		DRILLING/COMPLETION - ORIGINAL, 5/16/2010...				
CODELL		6/10/2019	TA		PLUG AND ABANDON, 6/7/2019 06:00				
NIOBRARA		7/16/2010	PR		DRILLING/COMPLETION - ORIGINAL, 5/16/2010...				
NIOBRARA		6/10/2019	TA		PLUG AND ABANDON, 6/7/2019 06:00				
Perforation Data									
Linked Zone			Bnch/Stg	Entered Shot Total	Top (ftKB)		Btm (ftKB)		Date
NIOBRARA, ORIGINAL HOLE			A	24	6,392.00		6,404.00		7/14/2010
NIOBRARA, ORIGINAL HOLE			B	24	6,456.00		6,468.00		7/14/2010
NIOBRARA, ORIGINAL HOLE			C	24	6,520.00		6,532.00		7/14/2010
CODELL, ORIGINAL HOLE				28	6,631.00		6,638.00		6/23/2010
Stimulation Intervals									
Zone					Start Date		Top (ftKB)		Btm (ftKB)
NIOBRARA, ORIGINAL HOLE					7/14/2010		6,392.0		6,404.0
NIOBRARA, ORIGINAL HOLE					7/14/2010		6,456.0		6,532.0
CODELL, ORIGINAL HOLE					7/14/2010		6,631.0		6,638.0
Other In Hole									
Run Date		Des				OD (in)	Top (ftKB)		Btm (ftKB)
6/10/2019		Cast Iron Bridge Plug				4	6,342.0		6,344.0
Logs									
Date		Type					Top, MD (ftKB)		Btm, MD (ftKB)
5/20/2010		Caliper/Comp. Density/Neutron/GR/SP/ML					2,690.0		6,820.0
5/20/2010		DIL/GR/SP/Caliper					560.0		6,840.0
5/28/2010		CBL/CCL/GR					1,400.0		6,750.0
11/19/2014		GYRO					10.0		6,500.0
Plug Back Total Depths									
Date		Type		Com					Depth (ftKB)
8/9/2010		PLUG REMNANTS		DRILL 2 COMPOSITE PLUGS W/ CUTRITE BIT AND N2. CHA...					6,779.0
5/16/2014		FILL		TAGGED UP WITH BIT & SCRAPER.					6,761.0