[illegible][illegible]

Customer Name Printed _____

Customer Signature _____

Date Signed _____

COUNTY	COMPANY	API Number
Weld	PDC ENERGY	05-123-20519
WELL NAME	RIG	JOB TYPE
SLW Ranch - 12-7	Ensign 318	CM-P2A-PERM.
SURFACE WELL LOCATION	CJES Field Supervisor	CUSTOMER REP
40.41556 -104.48692	Francisco Flores	Hector Terrazas

EMPLOYEES		
<i>Tyler Ingalls</i>	<i>Jake Guseman</i>	
<i>James Verhey</i>		
<i>Jared Cross</i>		

WELL PROFILE			
Max Treating Pressure (psi):	1000	Bottom Hole Static Temperature (°F):	
Bottom Hole Circulating Temperature (°F):		Well Type:	Oil

Open Hole

1	Size (in)	TMD From (ft)	TMD to (ft)	TVD From (Ft)	TVD to (Ft)
	10	1750	1320		
2	Size (in)	TMD From (ft)	TMD to (ft)	TVD From (Ft)	TVD to (Ft)
	14	580	380		

Casing/Tubing/Drill Pipe

Type	Size (in)	Weight (lb/ft)	Grade	TMD From (ft)	TMD to (ft)	TVD From (Ft)	TVD to (Ft)
Surface	8.625	24		380	0		
Type	Size (in)	Weight (lb/ft)	Grade	TMD From (ft)	TMD to (ft)	TVD From (Ft)	TVD to (Ft)
Production	4.5	10.5		1800	1750		
Type	Size (in)	Weight (lb/ft)	Grade	TMD From (ft)	TMD to (ft)	TVD From (Ft)	TVD to (Ft)
Tubing	2.375	4.7		1800	0		

CEMENT DATA

Stage 1:	From Depth (ft):	1800	To Depth (ft):	1320
Type: Stub Plug	Volume (sacks):	180	Volume (bbls):	42.6
Cement & Additives:				
Type III		Density (ppg)	Yield (ft³/sk)	Water Req.
		14.8	1.33	6.32

Stage 2:	From Depth (ft):	580	To Depth (ft):	0
Type: Surface Plug	Volume (sacks):	240	Volume (bbls):	57
Cement & Additives:				
Type III		Density (ppg)	Yield (ft³/sk)	Water Req.
		14.8	1.33	6.32

Stage 3:	From Depth (ft):		To Depth (ft):	
Type: Top Off	Volume (sacks):	8	Volume (bbls):	2
Cement & Additives:				
Type III		Density (ppg)	Yield (ft³/sk)	Water Req.
		14.8	1.33	6.32

SUMMARY

Preflushes:	10 bbls of SAPP	Calculated Displacement (bbl):	5.1	Stage 1	Stage 2
	5 bbls of Fresh Water	Actual Displacement (bbl):	5.1		
	10 bbls of Fresh Water				
Total Preflush/Spacer Volume (bbl):	25	Plug Bump (Y/N):		Bump Pressure (psi):	
Total Slurry Volume (bbl):	101.6	Lost Returns (Y/N):		(if Y, when)	
Total Fluid Pumped	133.7				
Returns to Surface:	Cement	1 bbls			

Job Notes (fluids pumped / procedures / tools / etc.):

Stub Plug-Production casing cut@1750'. End of tubing@1800'. Estimated 10" O.H. Mix & pump 100lbs SAPP ahead followed by 5 bbls fresh water spacer. Mix & pump 180sx@14.8ppg 1.33Y. 50' of coverage inside casing and 430' of O.H. coverage. ETCO@1320'. Displaced it with 5.1 bbls of fresh water. Crew then pulled up to 580' pumped it to surface. Mix & pump 240sx@14.8ppg 1.33Y. Topped off well with 2 bbl (8sx). Pumped job per customers request. Job went well. Thank you!

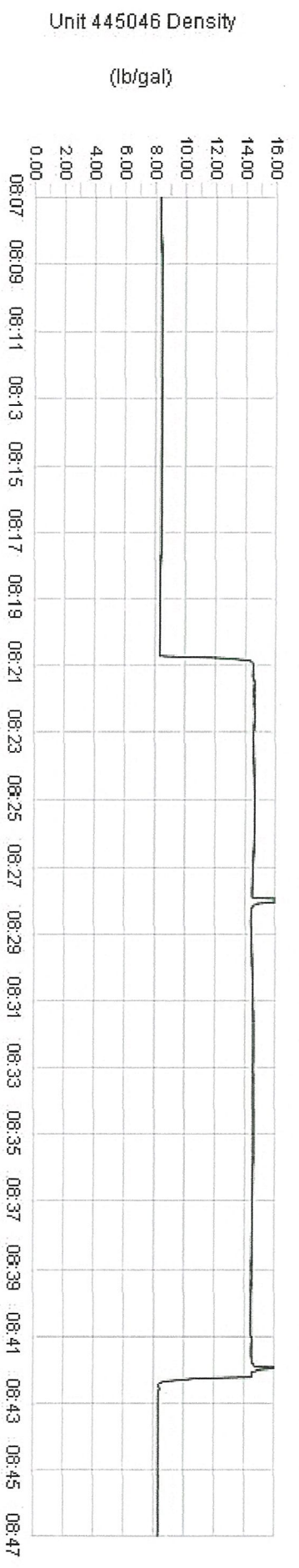
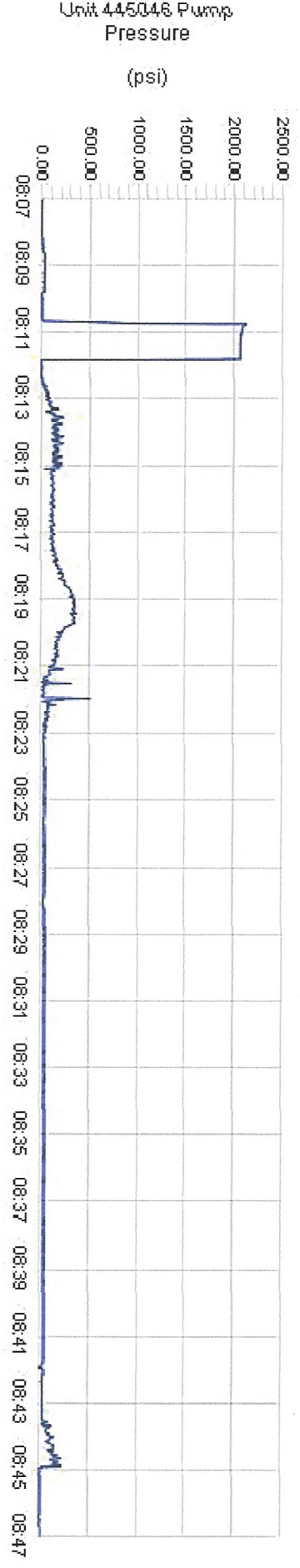
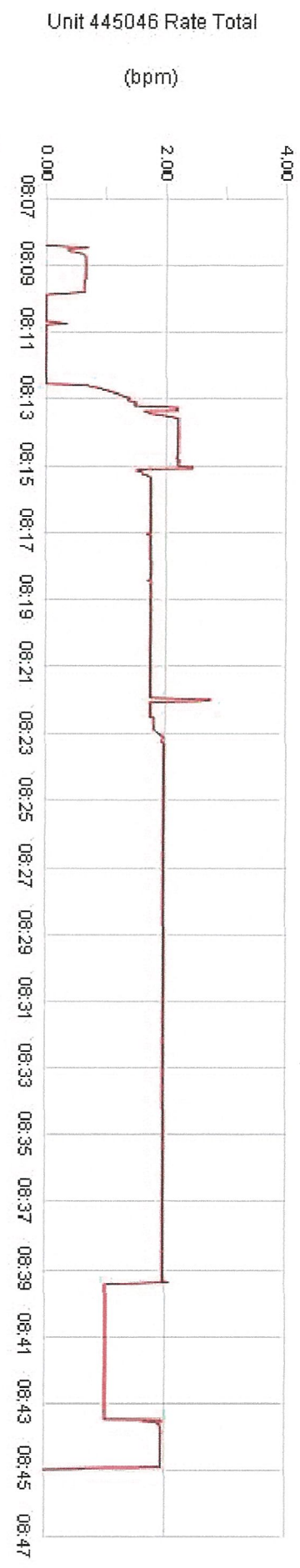
Customer Representative Signature:

 Thank You For Using
CJES O-TEX Cementing

C&J ENERGY SERVICES

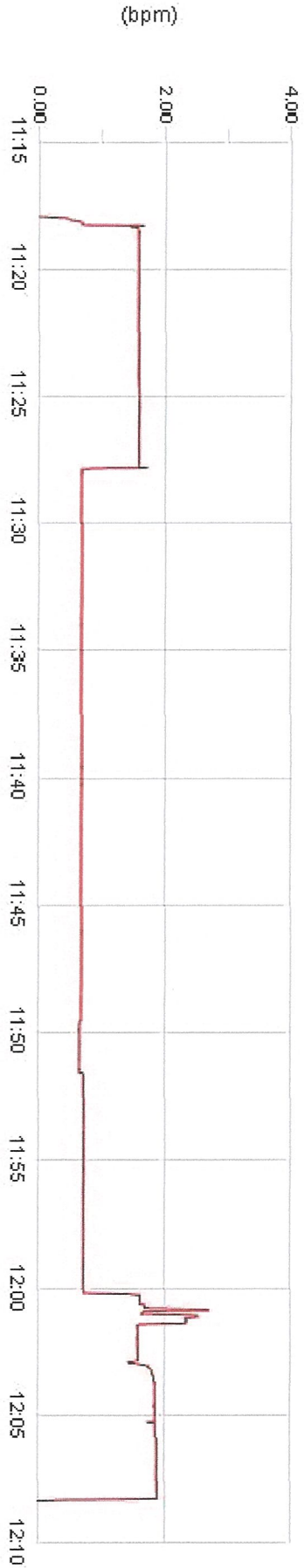
2 of 2
8/1/2019

Client	PDC Energy	Client Rep	Hector Terrazas	Supervisor	Francisco Flores
Ticket No.	19060002	Well Name	SLW Ranch 12-7	Unit No.	445046
Location	SWNW Sec 7 5N 63W	Job Type	Abandonment Plugs	Service District	Brighton
Comments	180sx@14.8ppg 1.33Y			Job Date	08/01/2019

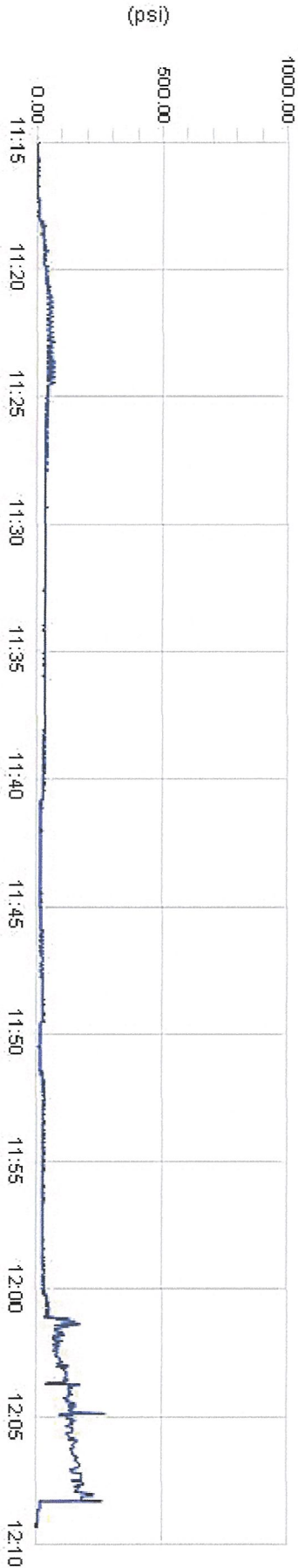


Client	PDC Energy	Client Rep	Hector Terrazas	Supervisor	Francisco Flores
Ticket No.	19080002	Well Name	SLW Ranch 12-7	Unit No.	445046
Location	SWNW Sec 7 5N 63W	Job Type	Abandonment Plugs	Service District	Brighton
Comments	Surface Plug			Job Date	08/01/2019

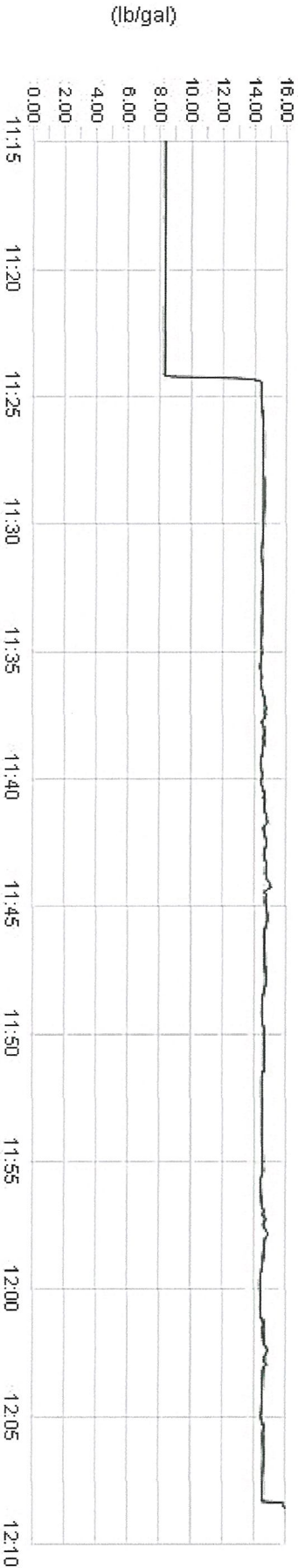
Unit 445046 Rate Total



Unit 445046 Pump Pressure



Unit 445046 Density



C&J ENERGY SERVICES

1 of 1

07/24/2019

You are hereby requested to perform or attempt to perform the following service(s) or furnish the following equipment:

SERVICE(S) AND/OR EQUIPMENT REQUESTED

[CO

WHEN SIGNED BY AN AGENT ON BEHALF OF CUSTOMER, SAID AGENT REPRESENTS THAT HE HAS FULL AUTHORITY FROM HIS PRINCIPAL TO EXECUTE SAME, IN THE ABSENCE OF AUTHORITY, THE SIGNER AGREES THAT HE SHALL BE OBLIGATED HEREUNDER AS CUSTOMER.

ZIP
CODE

2

THE ESTIMATED CHARGES AND DATA SHOWN ARE SUBJECT TO CORRECTION BY CASEHOLE SOLUTIONS, INC. ACCOUNTING

HOISTING TYPE:

PSI

ESTIMATED TOTAL C

THE SERVICE(S) AND/OR EQUIPMENT COVERED BY THIS SERVICE ORDER HAVE BEEN

SIGNATURE OF CUSTOMER OR AUTHORIZED REPRESENTATIVE

LOGS
RECEIVED
AT WELL

CUST. INITIALS

SIGNATURE OF CASEHOLE SOLUTIONS ENGINEER

NO. DESC.	NO. SHOTS FIRED	NO. SEL. SWITCHES	SEL. SW FAILURE
0	0	0	0
ES. EQ. USE	% H2S/ACID	PHASE	SPF
10K		0	0

Was catering provided by Casedhole Solutions?

NO

[illegible]