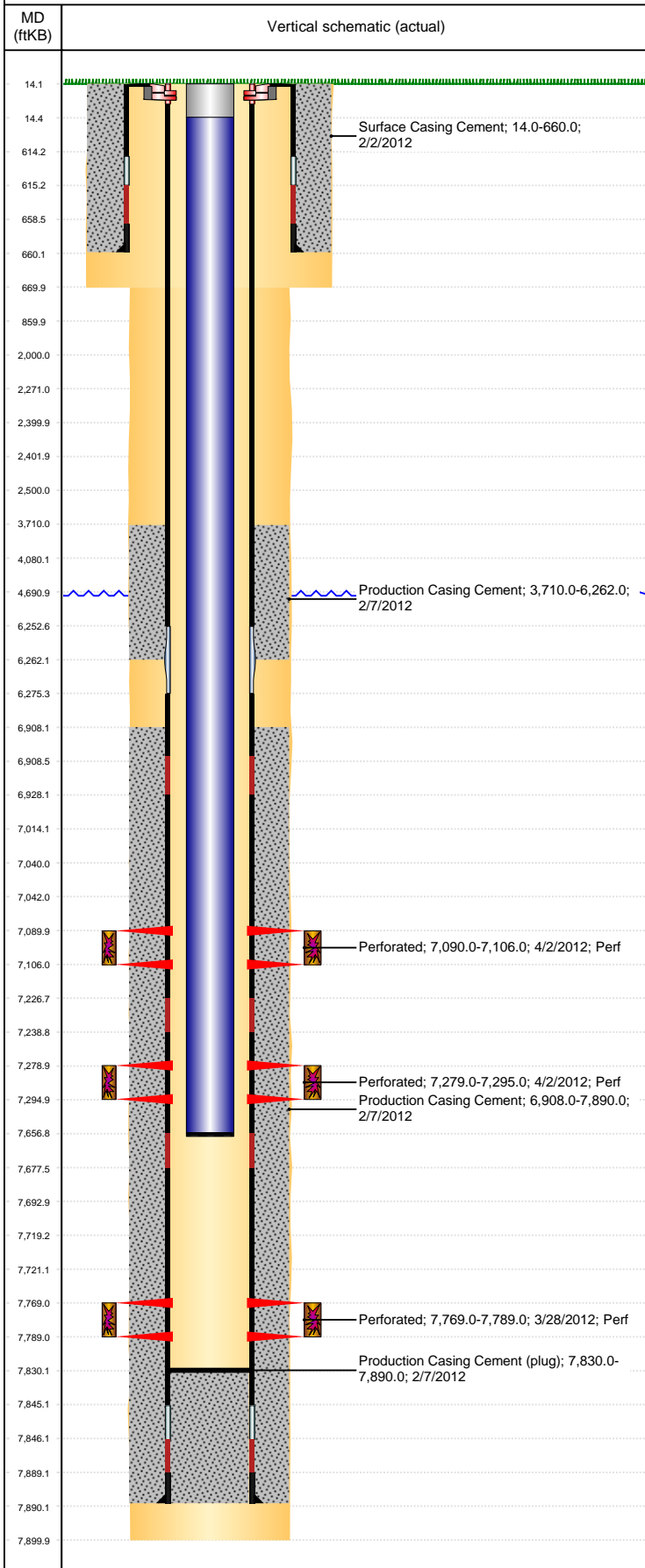


**Well Name: SHABLE G17-24D**

DEVIATED, ORIGINAL HOLE, 8/22/2019 10:16:30 AM



Well Header										
API 05-123-34801		Business Unit DJ BASIN			District 15		Well Config DEVIATED			
KB - GL / MSL (ft... 14.00		Spud Date 2/1/2012		P & A Date		Well Production Status PR			SoRT No	
Comment DV TOOL @ 6252', DRILLED OUT										
Surface Location (Congressional)										
Qtr 3 SW	Qtr 4 SE	Section 17	Twnshp 4	Twنش... N	Range 65	Rng E/... W	Actual Latitude (°) 40.30715020		Actual Longitude (°) -104.68476766	
Wellbore Sections										
Section Des			Size (in)			Act Top, MD (ftKB)		Act Btm, MD (ftKB)		
SURFACE			12 1/4			14		670		
PRODUCTION			7 7/8			670		7,900		
Casing Strings										
Csg Des			Run Date		OD (in)	Wt/Len (lb/ft)	Grade	Top, MD (ftKB)	MD (ftKB)	
Surface			2/1/2012		8 5/8	24.00	J-55	14.0	660.0	
PRODUCTION			2/6/2012		4 1/2	11.60	M-80	14.0	7,890.0	
Cement										
Des					Start Date		Top (ftKB)		Btm (ftKB)	
Surface Casing Cement					2/2/2012		14.0		660.0	
Production Casing Cement					2/7/2012		3,710.0		6,262.0	
Production Casing Cement					2/7/2012		6,908.0		7,890.0	
Zone Statuses										
Zone Name		Status Date	Status	Fluid Type	Job				Prod Method	
CODELL		4/13/2012	PR							
NIOBRARA		4/13/2012	PR							
J SAND		4/13/2012	PR							
Perforation Data										
Linked Zone			Bnch/Stg	Entered Shot Total	Top (ftKB)		Btm (ftKB)		Date	
NIOBRARA, ORIGINAL HOLE			B	32	7,090.00		7,106.00		4/2/2012	
CODELL, ORIGINAL HOLE				64	7,279.00		7,295.00		4/2/2012	
J SAND, ORIGINAL HOLE				80	7,769.00		7,789.00		3/28/2012	
Stimulation Intervals										
Zone					Start Date		Top (ftKB)		Btm (ftKB)	
NIOBRARA, ORIGINAL HOLE					4/2/2012		7,090.0		7,106.0	
CODELL, ORIGINAL HOLE					4/2/2012		7,279.0		7,295.0	
J SAND, ORIGINAL HOLE					4/2/2012		7,769.0		7,789.0	
Other In Hole										
Run Date		Des				OD (in)	Top (ftKB)		Btm (ftKB)	
Logs										
Date		Type					Top, MD (ftKB)		Btm, MD (ftKB)	
2/21/2012		CBL/CCL/GR					1,140.0		7,829.0	
Plug Back Total Depths										
Date		Type			Com				Depth (ftKB)	
2/21/2012		FILL			DEPTH LOGGER				7,830.0	
4/12/2012		PLUG REMNANTS			DRILL OUT FLOW THRU PLUGS, PUSH TO PBTD @ 7830				7,830.0	