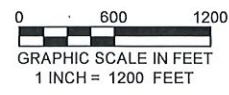
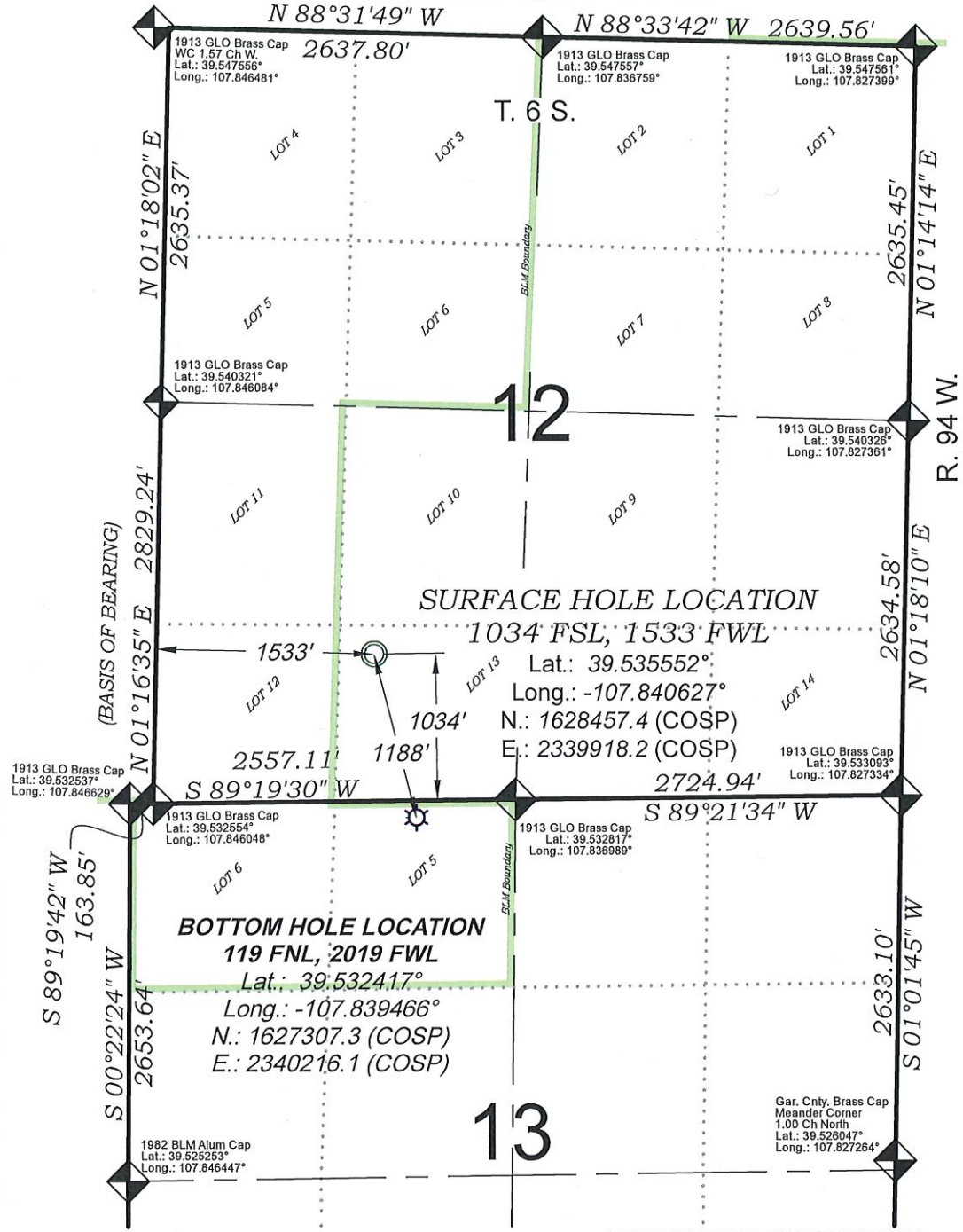


Federal RWF 21-13



SURFACE HOLE LOCATION

1034 FSL; 1533 FWL
 Lat.: 39.535552°
 Long.: -107.840627°
 N.: 1628457.4 (COSP)
 E.: 2339918.2 (COSP)

BOTTOM HOLE LOCATION

119 FNL, 2019 FWL
 Lat.: 39.532417°
 Long.: -107.839466°
 N.: 1627307.3 (COSP)
 E.: 2340216.1 (COSP)

EXISTING GROUND ELEV.: 5441.8
 PROPOSED PAD ELEV.: 5441.1

SEE CONSTRUCTION LAYOUT PLAT
 FOR VISIBLE IMPROVEMENTS
 WITHIN 500' OF THIS LOCATION

- LEGEND -

- FIELD LOCATED SECTION MONUMENTS AS DESCRIBED
- FIELD SURVEYED WELL LOCATION
- CALCULATED BOTTOM HOLE LOCATION
- CALCULATED SECTION CORNER LOCATION

SURVEYORS STATEMENT

I, MICHAEL J. LANGHORNE, A REGISTERED LAND SURVEYOR IN THE STATE OF COLORADO DO HEREBY CERTIFY THAT THE SURVEY SHOWN HEREON WAS PREPARED UNDER MY DIRECT SUPERVISION AND HAS BEEN STAKED ON THE GROUND AS SHOWN ON THE PLAT AND CHECKING THAT THIS MAP IS A TRUE REPRESENTATION THEREOF.

Michael Langhorne
 36572
 MICHAEL J. LANGHORNE
 REGISTERED LAND SURVEYOR

MICHAEL J. LANGHORNE, COLORADO REGISTRATION NO. 36572
 FOR AND ON BEHALF OF
 BOOKCLIFF SURVEY SERVICES, INC.

NOTES

- 1) ELEVATIONS BASED ON N.A.V.D. 1988 PUBLISHED COORDINATES.
- 2) LATITUDES AND LONGITUDES ARE BASE ON NAD 83, PUBLISHED COORDINATES
- 3) STATE PLANE COORDINATES ARE BASED ON COLORADO CENTRAL ZONE, U.S. SURVEY FEET.
- 4) ELEVATION MASK SET TO 15"
- 5) GPS OPERATOR J. KIRKPATRICK, OBSERVED A PDOP 3.2 ON SURVEY POINT NUMBER 42456.
- 6) SURFACE AND BOTTOM HOLE LOCATIONS ARE MEASURED 90° FROM SECTION LINES.

REFERENCES

- 1) Dependent Resurvey & Extension T. 6 S., R. 94 W., 6th P.M (GLO PLAT)
- 2) U.S.G.S. QUAD: Rifle, CO

REVISED: 6/13/19

SURVEY DATE:	5/15/19
MAP DATE:	5/21/19
SCALE:	1" = 1000'
PLAT:	1 of 1
PROJECT:	TEP Valley

WELL LOCATION PLAT Prepared for:

TERRA ENERGY PARTNERS
 TEP Rocky Mountain LLC

SE1/4 SW1/4, SECTION 12
 T. 6 S., R. 94 W. of the 6th. P.M.
 GARFIELD COUNTY, COLORADO

136 East Third Street
 Rifle, Colorado
 81650 Ph. (970)
 625-2720 Fax (970)
 625-2773