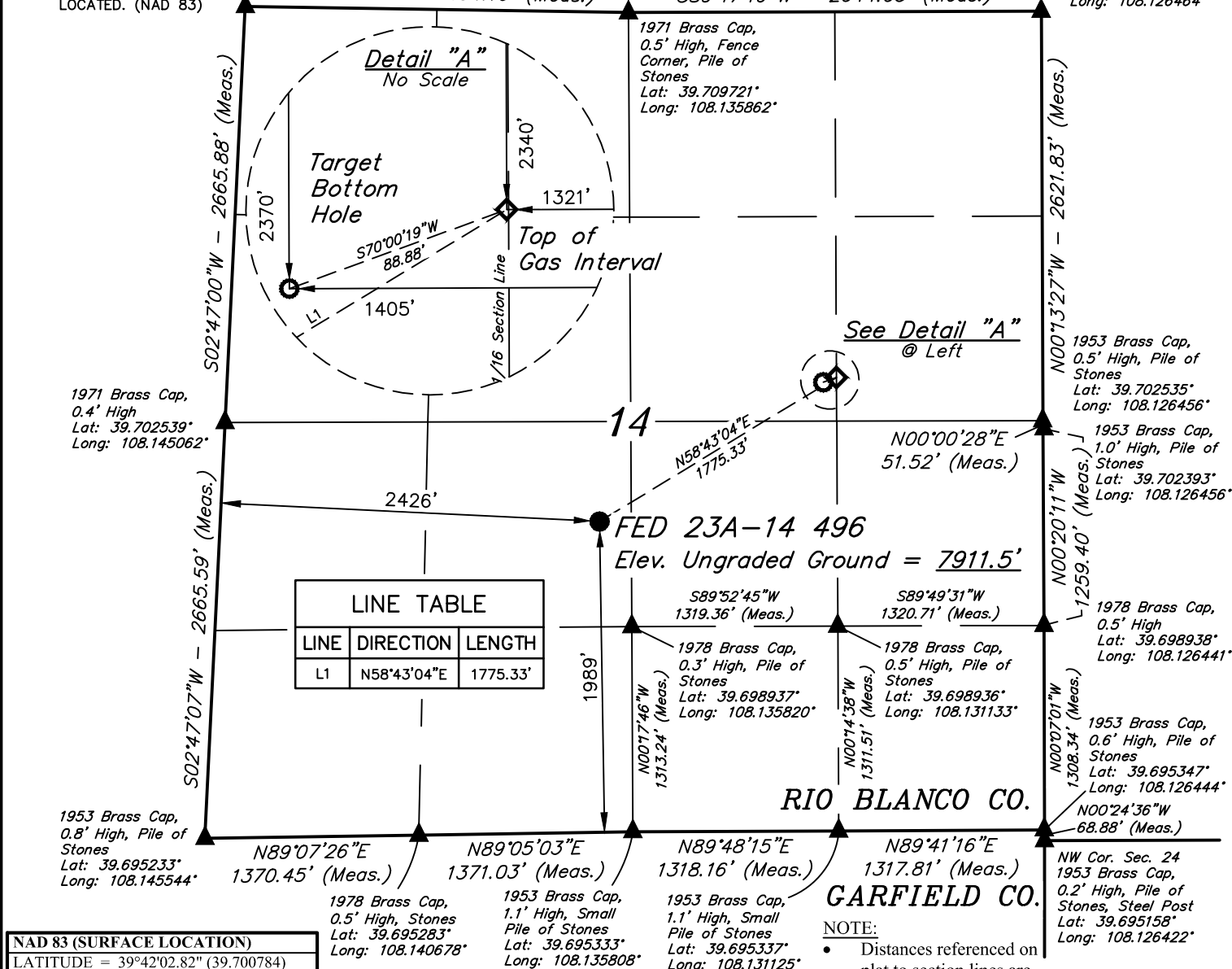


T4S, R96W, 6th P.M.

- 1971 Brass Cap,
Flush W/Ground,
E-W Fence
Lat: 39.709845°
Long: 108.144580°

S89°47'19"W - 2644.03' (Meas.)

1953 Brass Cap,
1.0' High
Lat: 39.709730°
Long: 108.126464°



LINE TABLE		
LINE	DIRECTION	LENGTH
L1	N58°43'04"E	1775.33'

NAD 83 (SURFACE LOCATION)
LATITUDE = 39°42'02.82" (39.700784)
LONGITUDE = 108°08'11.57" (108.136548)
NAD 27 (SURFACE LOCATION)
LATITUDE = 39°42'02.91" (39.700809)
LONGITUDE = 108°08'09.28" (108.135912)
UTM NAD 27 (ZONE 12)
N: 14429970.26 E: 2446080.26
NAD 83 (TOP OF GAS INTERVAL)
LATITUDE = 39°42'11.89" (39.703303)
LONGITUDE = 108°07'52.14" (108.131150)
NAD 27 (TOP OF GAS INTERVAL)
LATITUDE = 39°42'11.98" (39.703328)
LONGITUDE = 108°07'49.85" (108.130514)
UTM NAD 27 (ZONE 12)
N: 14430936.36 E: 2447569.54

NAD 83 (TARGET BOTTOM HOLE)
LATITUDE = 39°42'11.59" (39.703220)
LONGITUDE = 108°07'53.21" (108.131447)
NAD 27 (TARGET BOTTOM HOLE)
LATITUDE = 39°42'11.68" (39.703245)
LONGITUDE = 108°07'50.92" (108.130811)
UTM NAD 27 (ZONE 12)
N: 14430903.53 E: 2447486.95

PDOP = 1.4

NOTE:

- Distances referenced on plat to section lines are perpendicular.

CERTIFICATE

THIS IS TO CERTIFY THAT THE ABOVE PLAT WAS PREPARED FROM FIELD NOTES OF ACTUAL SURVEYS MADE BY ME OR UNDER MY SUPERVISION AND THAT THE LOCATION HAS BEEN STAKED ON THE GROUND AS SHOWN ON THE PLAT AND THAT THE SAME ARE TRUE AND CORRECT TO THE BEST OF MY KNOWLEDGE AND BELIEF.

REGISTERED LAND SURVEYOR
REGISTRATION NO. 38130
STATE OF COLORADO

02-21-19

BASIS OF BEARINGS

BEARINGS ARE BASED ON THE ASSUMPTION THAT THE NORTH LINE OF THE NORTHEAST 1/4 OF SECTION 14 BEARS S89°47'19"W. MONUMENTS DESCRIBED HEREON.

BASIS OF ELEVATION

BENCH MARK (H79) LOCATED IN THE NE 1/4 OF SECTION 35, T4S, R98W, 6th P.M., TAKEN FROM THE BULL FORK QUADRANGLE, COLORADO, 7.5 MINUTE SERIES, (TOPOGRAPHIC MAP) PUBLISHED BY THE UNITED STATES DEPARTMENT OF THE INTERIOR, GEOLOGICAL SURVEY. SAID ELEVATION IS MARKED AS BEING 8535 FEET.

UELS, LLC

**Corporate Office * 85 South 200 East
Vernal, UT 84078 * (435) 789-1017**

Caerus Oil & Gas LLC

FED 23A-14 496

**NE 1/4 SW 1/4, SECTION 14, T4S, R96W, 6th P.M.
RIO BLANCO COUNTY, COLORADO**

SURVEYED BY	DENNIS PETTY, J.L.	12-20-18	SCALE
DRAWN BY	M.D.	02-15-19	1" = 1000'

WELL LOCATION PLAT

