

LEGEND:

- = PROPOSED WELLHEAD.
- ◆ = TOP OF GAS INTERVAL.
- = TARGET BOTTOM HOLE.
- ▲ = SECTION CORNERS LOCATED. (NAD 83)

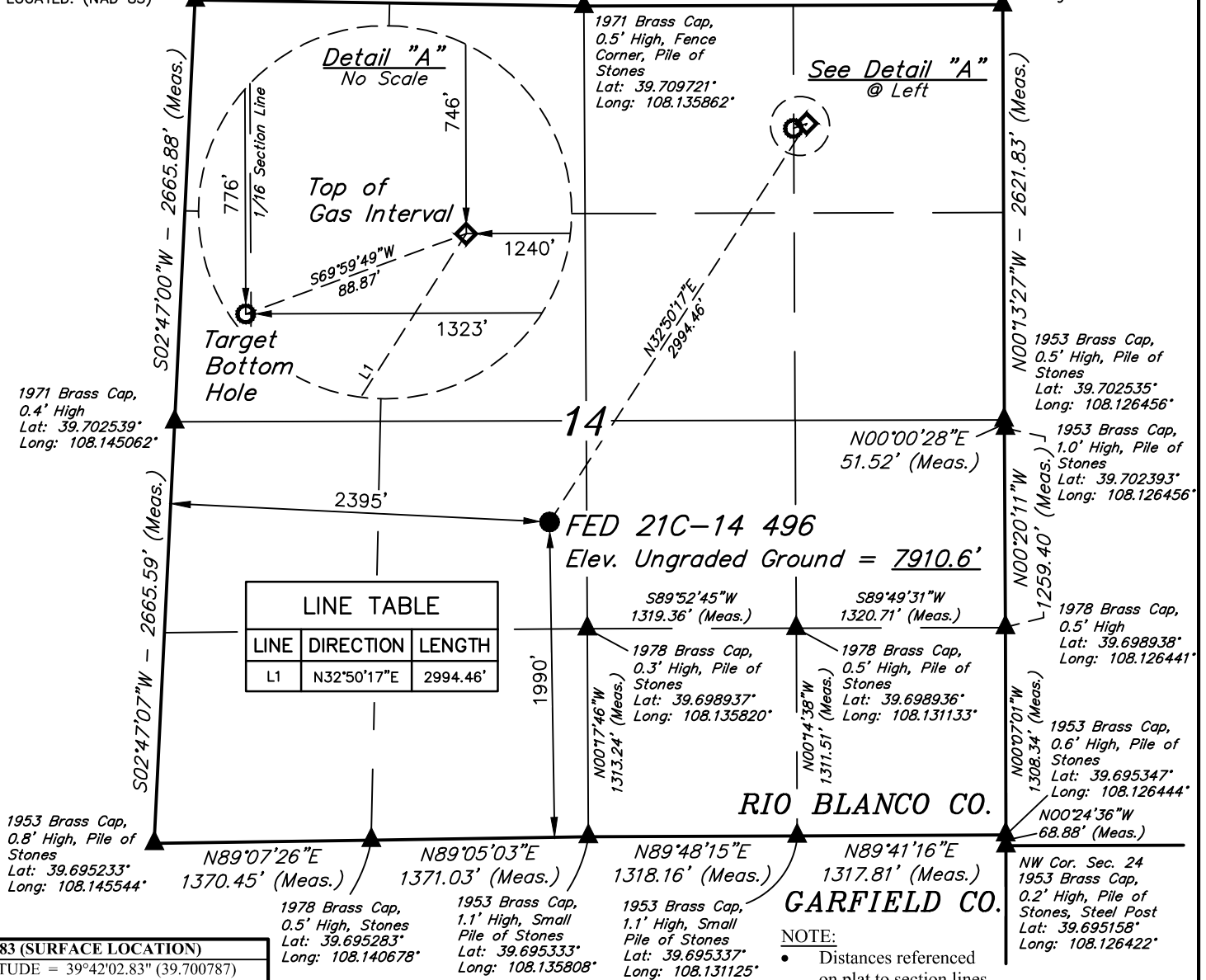
T4S, R96W, 6th P.M.

1971 Brass Cap,
Flush W/Ground,
E-W Fence
Lat: 39.709845°
Long: 108.144580°

Basis of Bearing

S89°47'19"W - 2644.03' (Meas.)

1953 Brass Cap,
1.0' High
Lat: 39.709730°
Long: 108.126464°



NAD 83 (SURFACE LOCATION)	
LATITUDE = 39°42'02.83" (39.700787)	
LONGITUDE = 108°08'11.98" (108.136660)	
NAD 27 (SURFACE LOCATION)	
LATITUDE = 39°42'02.92" (39.700812)	
LONGITUDE = 108°08'09.69" (108.136024)	
UTM NAD 27 (ZONE 12)	
N: 14429970.31 E: 2446048.64	
NAD 83 (TOP OF GAS INTERVAL)	
LATITUDE = 39°42'27.65" (39.707680)	
LONGITUDE = 108°07'51.13" (108.130869)	
NAD 27 (TOP OF GAS INTERVAL)	
LATITUDE = 39°42'27.74" (39.707705)	
LONGITUDE = 108°07'48.84" (108.130234)	
UTM NAD 27 (ZONE 12)	
N: 14432532.87 E: 2447597.43	

NAD 83 (TARGET BOTTOM HOLE)	
LATITUDE = 39°42'27.35" (39.707597)	
LONGITUDE = 108°07'52.20" (108.131166)	
NAD 27 (TARGET BOTTOM HOLE)	
LATITUDE = 39°42'27.44" (39.707622)	
LONGITUDE = 108°07'49.91" (108.130531)	
UTM NAD 27 (ZONE 12)	
N: 14432500.02 E: 2447514.86	

**PDOP = 1.4****BASIS OF BEARINGS**

BEARINGS ARE BASED ON THE ASSUMPTION THAT THE NORTH LINE OF THE NORTHEAST 1/4 OF SECTION 14 BEARS S89°47'19"W. MONUMENTS DESCRIBED HEREON.

BASIS OF ELEVATION

BENCH MARK (H79) LOCATED IN THE NE 1/4 OF SECTION 35, T4S, R98W, 6th P.M., TAKEN FROM THE BULL FORK QUADRANGLE, COLORADO, 7.5 MINUTE SERIES. (TOPOGRAPHIC MAP) PUBLISHED BY THE UNITED STATES DEPARTMENT OF THE INTERIOR, GEOLOGICAL SURVEY. SAID ELEVATION IS MARKED AS BEING 8535 FEET.

UELS, LLC

Corporate Office * 85 South 200 East
Vernal, UT 84078 * (435) 789-1017

**Caerus Oil & Gas LLC**

FED 21C-14 496
NE 1/4 SW 1/4, SECTION 14, T4S, R96W, 6th P.M.
RIO BLANCO COUNTY, COLORADO

SURVEYED BY	DENNIS PETTY, J.L.	12-20-18	SCALE
DRAWN BY	M.D.	02-15-19	1" = 1000'

WELL LOCATION PLAT

CERTIFICATE
THIS IS TO CERTIFY THAT THE ABOVE PLAT WAS PREPARED FROM FIELD NOTES OF ACTUAL SURVEYS MADE BY ME OR UNDER MY SUPERVISION, AND THAT THE LOCATION HAS BEEN STAKED ON THE GROUND AS SHOWN ON THE PLAT AND THAT THE SAME ARE TRUE AND CORRECT TO THE BEST OF MY KNOWLEDGE AND BELIEF.

REGISTERED LAND SURVEYOR
REGISTRATION NO. 88180
STATE OF COLORADO

