

LEGEND:

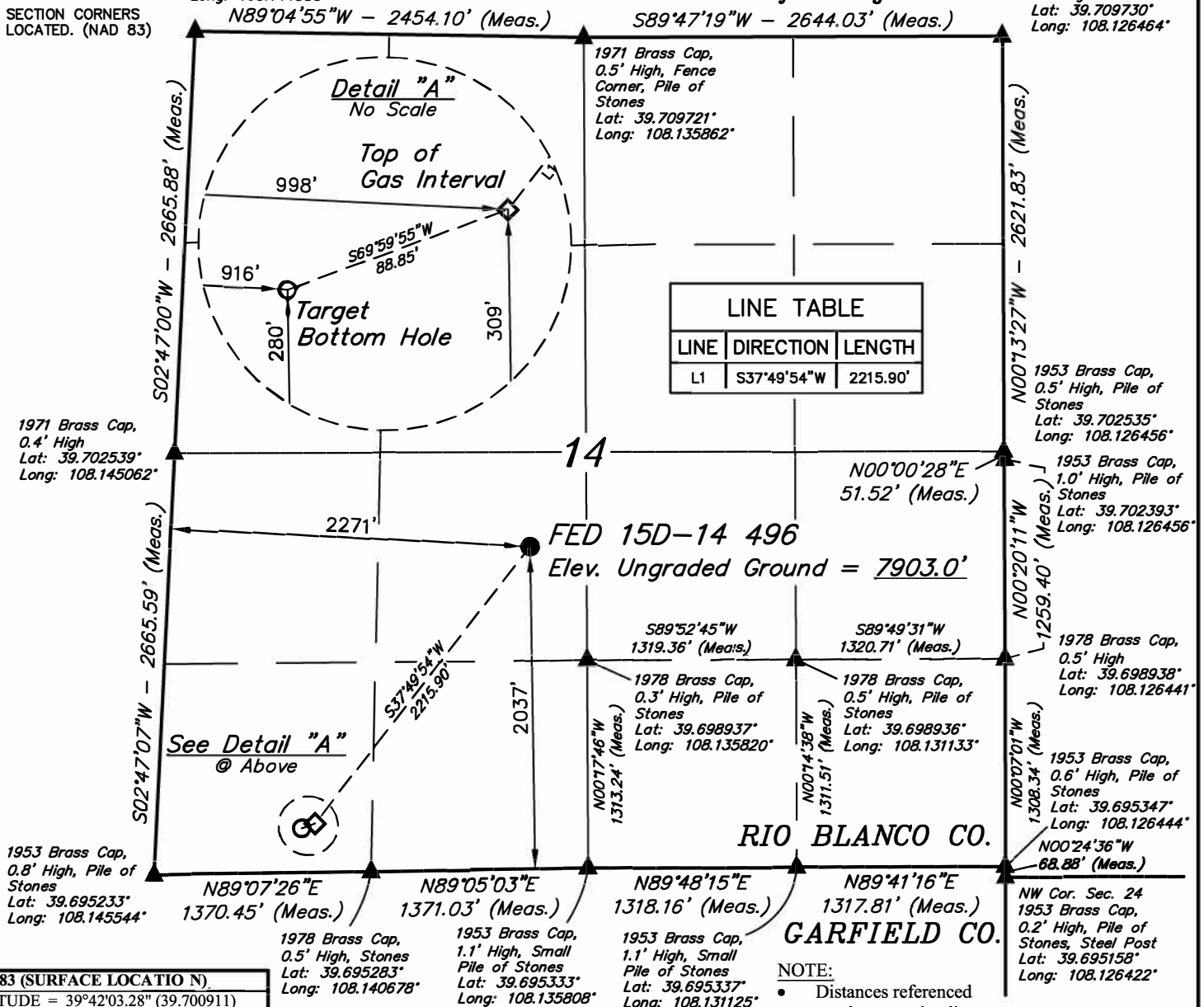
- = PROPOSED WELLHEAD.
- ◆ = TOP OF GAS INTERVAL.
- = TARGET BOTTOM HOLE.
- ▲ = SECTION CORNERS LOCATED. (NAD 83)

T4S, R96W, 6th P.M.

1971 Brass Cap,
Flush W/Ground,
E-W Fence
Lat: 39.709845°
Long: 108.144580°

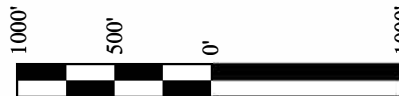
Basis of Bearing

1953 Brass Cap,
1.0' High
Lat: 39.709730°
Long: 108.126464°



NAD 83 (SURFACE LOCATION N)	
LATITUDE = 39°42'03.28" (39.700911)	
LONGITUDE = 108°08'13.54" (108.137093)	
NAD 27 (SURFACE LOCATION)	
LATITUDE = 39°42'03.37" (39.700936)	
LONGITUDE = 108°08'11.25" (108.136457)	
UTM NAD 27 (ZONE 12)	
N: 14430011.60 E: 2445925.38	
NAD 83 (TOP OF GAS INTERVAL)	
LATITUDE = 39°41'46.02" (39.696117)	
LONGITUDE = 108°08'30.97" (108.141936)	
NAD 27 (TOP OF GAS INTERVAL)	
LATITUDE = 39°41'46.11" (39.696142)	
LONGITUDE = 108°08'28.68" (108.141300)	
UTM NAD 27 (ZONE 12)	
N: 14428222.29 E: 2444618.56	

NAD 83 (TARGET BOTTOM HOLE)	
LATITUDE = 39°41'45.72" (39.696034)	
LONGITUDE = 108°08'32.04" (108.142233)	
NAD 27 (TARGET BOTTOM HOLE)	
LATITUDE = 39°41'45.81" (39.696059)	
LONGITUDE = 108°08'29.75" (108.141597)	
UTM NAD 27 (ZONE 12)	
N: 14428189.45 E: 2444536.01	



PDOP = 1.4

BASIS OF BEARINGS

BEARINGS ARE BASED ON THE ASSUMPTION THAT THE NORTH LINE OF THE NORTHEAST 1/4 OF SECTION 14 BEARS S89°47'19"W. MONUMENTS DESCRIBED HEREON.

BASIS OF ELEVATION

BENCH MARK (H79) LOCATED IN THE NE 1/4 OF SECTION 35, T4S, R98W, 6th P.M., TAKEN FROM THE BULL FORK QUADRANGLE, COLORADO, 7.5 MINUTE SERIES. (TOPOGRAPHIC MAP) PUBLISHED BY THE UNITED STATES DEPARTMENT OF THE INTERIOR, GEOLOGICAL SURVEY. SAID ELEVATION IS MARKED AS BEING 8535 FEET.

UELS, LLC

Corporate Office * 85 South 200 East
Vernal, UT 84078 * (435) 789-1017

Caerus Oil & Gas LLC

FED 15D-14 496
NE 1/4 SW 1/4, SECTION 14, T4S, R96W, 6th P.M.
RIO BLANCO COUNTY, COLORADO

SURVEYED BY	DENNIS PETTY, J.L.	12-20-18	SCALE
DRAWN BY	M.D.	02-15-19	1" = 1000'

WELL LOCATION PLAT

