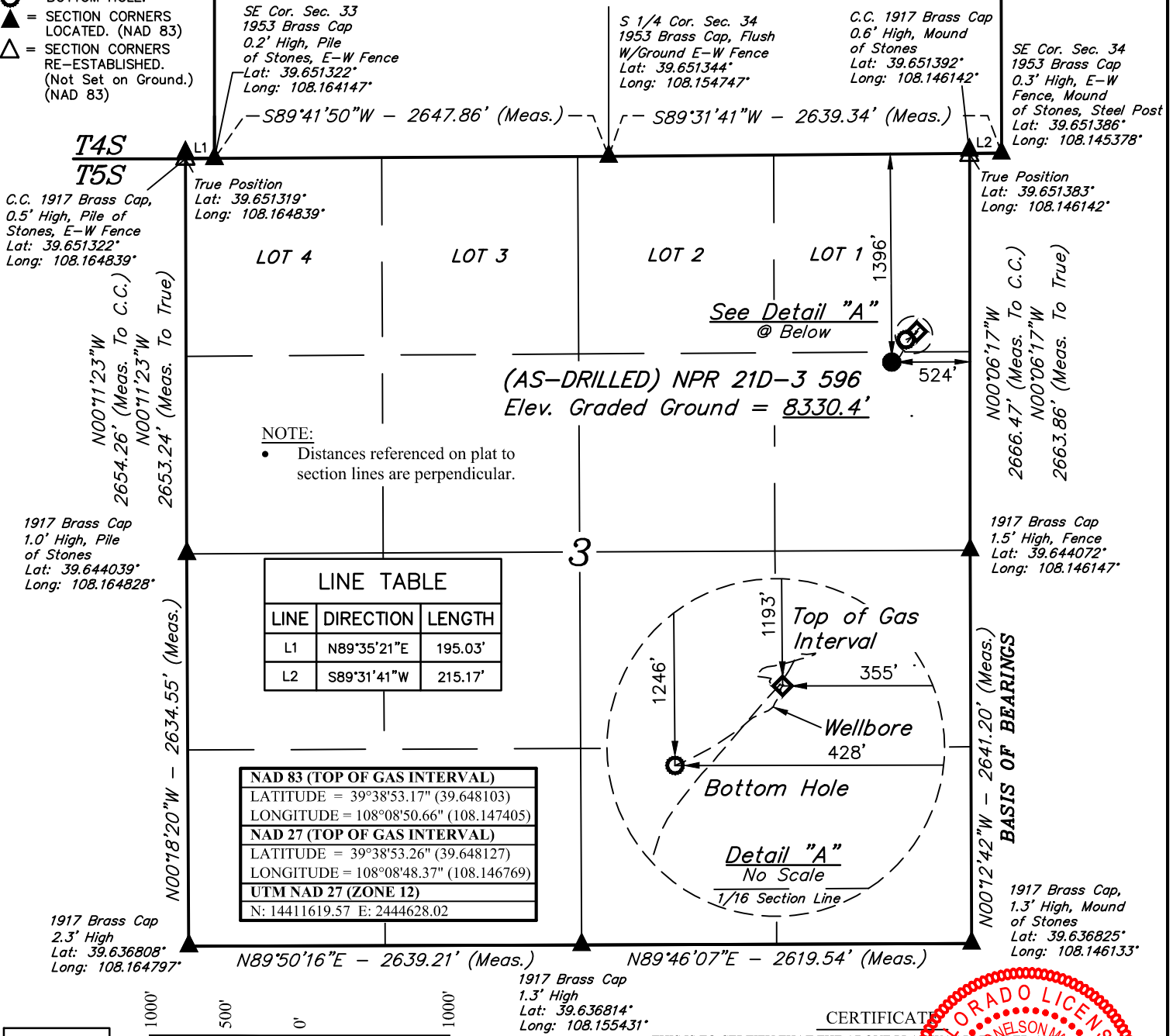


# T5S, R96W, 6th P.M.

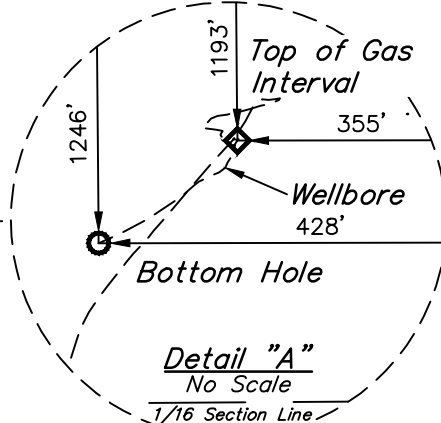
## Sec. 34

### LEGEND:

- = AS-DRILLED WELLHEAD.
- ◆ = TOP OF GAS INTERVAL
- = BOTTOM HOLE.
- ▲ = SECTION CORNERS LOCATED. (NAD 83)
- △ = SECTION CORNERS RE-ESTABLISHED. (Not Set on Ground.) (NAD 83)



LINE	DIRECTION	LENGTH
L1	N89°35'21"E	195.03'
L2	S89°31'41"W	215.17'



**CERTIFICATE**

THIS IS TO CERTIFY THAT THE ABOVE PLAT WAS PREPARED AND THE LOCATION AS SHOWN WAS STAKED ON THE GROUND FROM FIELD NOTES OF ACTUAL SURVEYS MADE BY ME OR UNDER MY SUPERVISION AND THAT THE SAME ARE TRUE AND CORRECT TO THE BEST OF MY KNOWLEDGE AND BELIEF.

*Harold Marshall*

REGISTERED LAND SURVEYOR  
REGISTRATION NO. 10000  
STATE OF COLORADO 08-12-19

NAD 83 (AS-DRILLED LOCATION)	NAD 83 (BOTTOM HOLE)
LATITUDE = 39°38'51.15" (39.647543)	LATITUDE = 39°38'52.64" (39.647956)
LONGITUDE = 108°08'52.82" (108.148004)	LONGITUDE = 108°08'51.58" (108.147662)
NAD 27 (AS-DRILLED LOCATION)	NAD 27 (BOTTOM HOLE)
LATITUDE = 39°38'51.24" (39.647567)	LATITUDE = 39°38'52.73" (39.647981)
LONGITUDE = 108°08'50.53" (108.147368)	LONGITUDE = 108°08'49.29" (108.147026)
UTM NAD 27 (ZONE 12)	UTM NAD 27 (ZONE 12)
N: 14410476.98 E: 2443474.00	N: 14411250.96 E: 2444505.40

REV: 1 08-12-19 M.D. (TGI AND BHL MOVES)

**BASIS OF BEARINGS**  
BEARINGS ARE BASED ON THE ASSUMPTION THAT THE EAST LINE OF THE SOUTHEAST 1/4 OF SECTION 3 BEARS N00°12'42"W. MONUMENTS DESCRIBED HEREON.

**BASIS OF ELEVATION**  
BENCH MARK (H79) LOCATED IN THE NE 1/4 OF SECTION 35, T4S, R98W, 6th P.M., TAKEN FROM THE BULL FORK, QUADRANGLE, COLORADO, 7.5 MINUTE SERIES (TOPOGRAPHIC MAP) PUBLISHED BY THE UNITED STATES DEPARTMENT OF THE INTERIOR, GEOLOGICAL SURVEY. SAID ELEVATION IS MARKED AS BEING 8535 FEET.



**Caerus Oil & Gas LLC**  
**(AS-DRILLED) NPR 21D-3 596**  
**SE 1/4 NE 1/4, SECTION 3, T5S, R96W, 6th P.M.**  
**GARFIELD COUNTY, COLORADO**



**UELS, LLC**  
Corporate Office \* 85 South 200 East  
Vernal, UT 84078 \* (435) 789-1017

SURVEYED BY	JOEL LEFEVERE, D.P.	04-16-19	SCALE
DRAWN BY	M.D.	04-23-19	1" = 1000'

**AS-DRILLED WELL LOCATION PLAT**