



August 14, 2019

VIA ELECTRONIC TRANSMITTAL

Oil and Gas Conservation Commission
1120 Lincoln St., Suite 801
Denver, CO 80203

Re: **30-Day Certification Letter – Rule 318A.e**

Safi 1224 11H located 2065' FSL & 2203' FEL (SHL) Weld County

Dear COGCC Director,

Verdad Resources LLC (Verdad) hereby certifies to the Director that a thirty (30-day) notice has been given by certified mail to all owners in the proposed the 720 acres comprised of Section 12: S2SE4, Section 13: E2, and Section 24 E2 of T1N-R65W.

We have not received any objections to such well location or proposed spacing unit, therefore Verdad hereby requests the Director to approve the proposed wells.

If you should have any questions or concerns regarding this permit, please contact the undersigned at 720-845-6909.

Sincerely,

Allison Schieber
Sr Regulatory Analyst
Verdad Oil and Gas Corporation

SCALE: 1" = 2000'
0' 1000' 2000'

WELLBORE SPACING UNIT WELD COUNTY, COLORADO

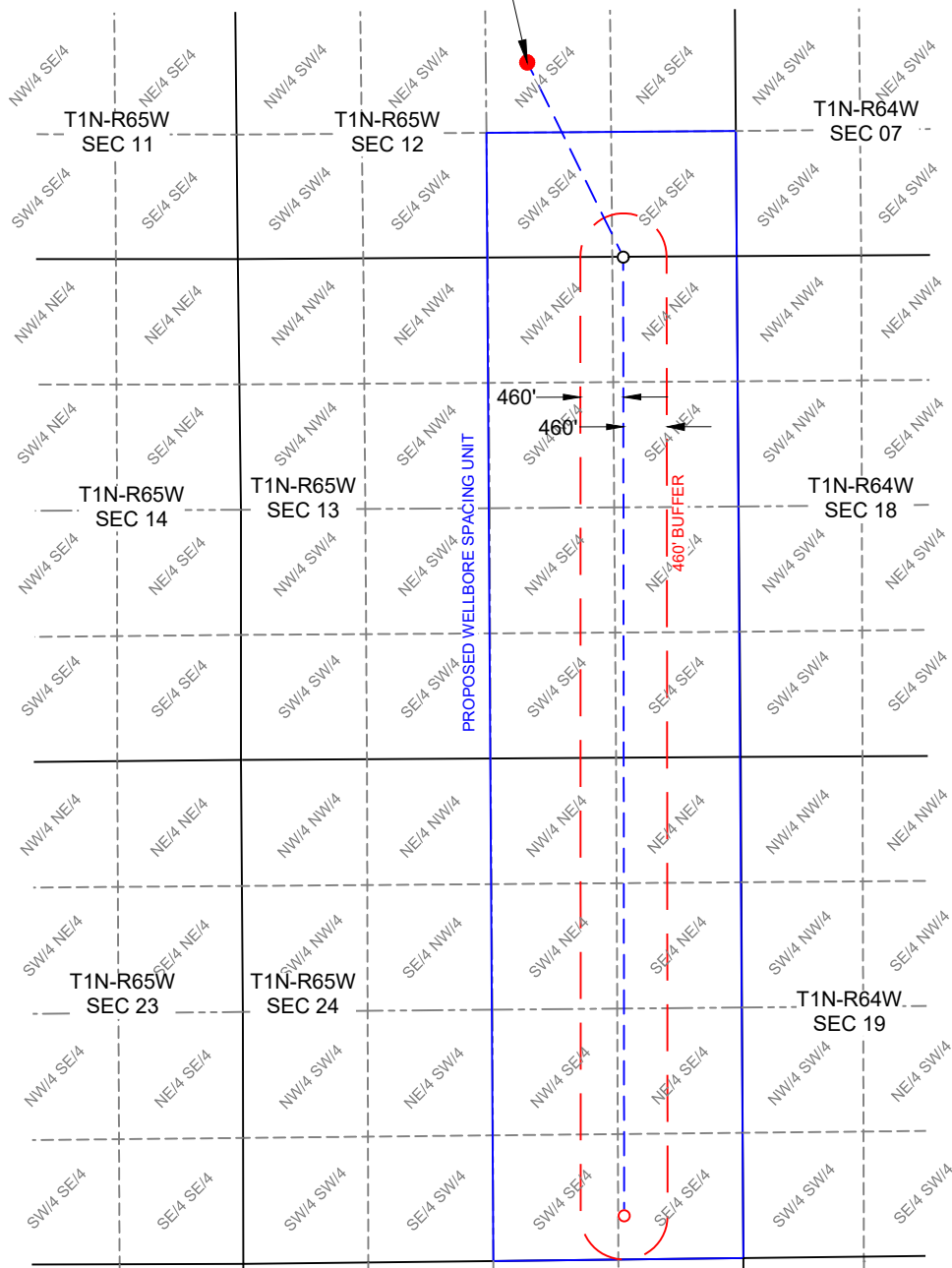


SURFACE LOCATION
GROUND ELEV = 4971'
LAT.: N 40.0643737
LONG.: W 104.6105637
2065' FSL & 2203' FEL
NW/4 SE/4, SEC 12, T1N-R65W

LANDING POINT
LAT.: N 40.0586938
LONG.: W 104.6070088
0' FNL & 1203' FEL
NW/4 NE/4, SEC 13, T1N-R65W

BOTTOM HOLE LOCATION
LAT.: N 40.0308136
LONG.: W 104.6073367
400' FNL & 1260' FEL
NW/4 SE/4, SEC 24, T1N-R65W

SAFI 1224-11H



LEGEND

- WELL BORE
- 460' BUFFER
- WELL BORE SPACING UNIT
- SURFACE HOLE LOCATION
- LANDING POINT
- BOTTOM HOLE LOCATION

NOTES

- Horizontal (NAD 83) and vertical (NAVD 88) datum is based on the Trimble VRS Network or OPUS Solution.
- See Form 2A, if applicable for visible improvements within 500' of wellhead.
- Distances to nearest section lines are measured perpendicularly.
- This is not a land survey nor land survey plat.

PDOP Reading: 1.2 Instrument Operator: **Brent Garcia**
Date Surveyed: **03/25/2019**

SURVEYOR'S STATEMENT

The undersigned hereby states that the well location shown hereon was staked on the ground based on existing monumentation and/or physical evidence found in the field and is correct to the best of my knowledge, information and belief.



VERDAD RESOURCES
SAFI 1224-11H
JOB NO. 125170

JLS	05/14/19
SHEET :	1 OF 1
FILE:	CD_WELLBORE_SPACING_SAFI_1224_11H_REV1

REVISION:	
JLS	05/14/19