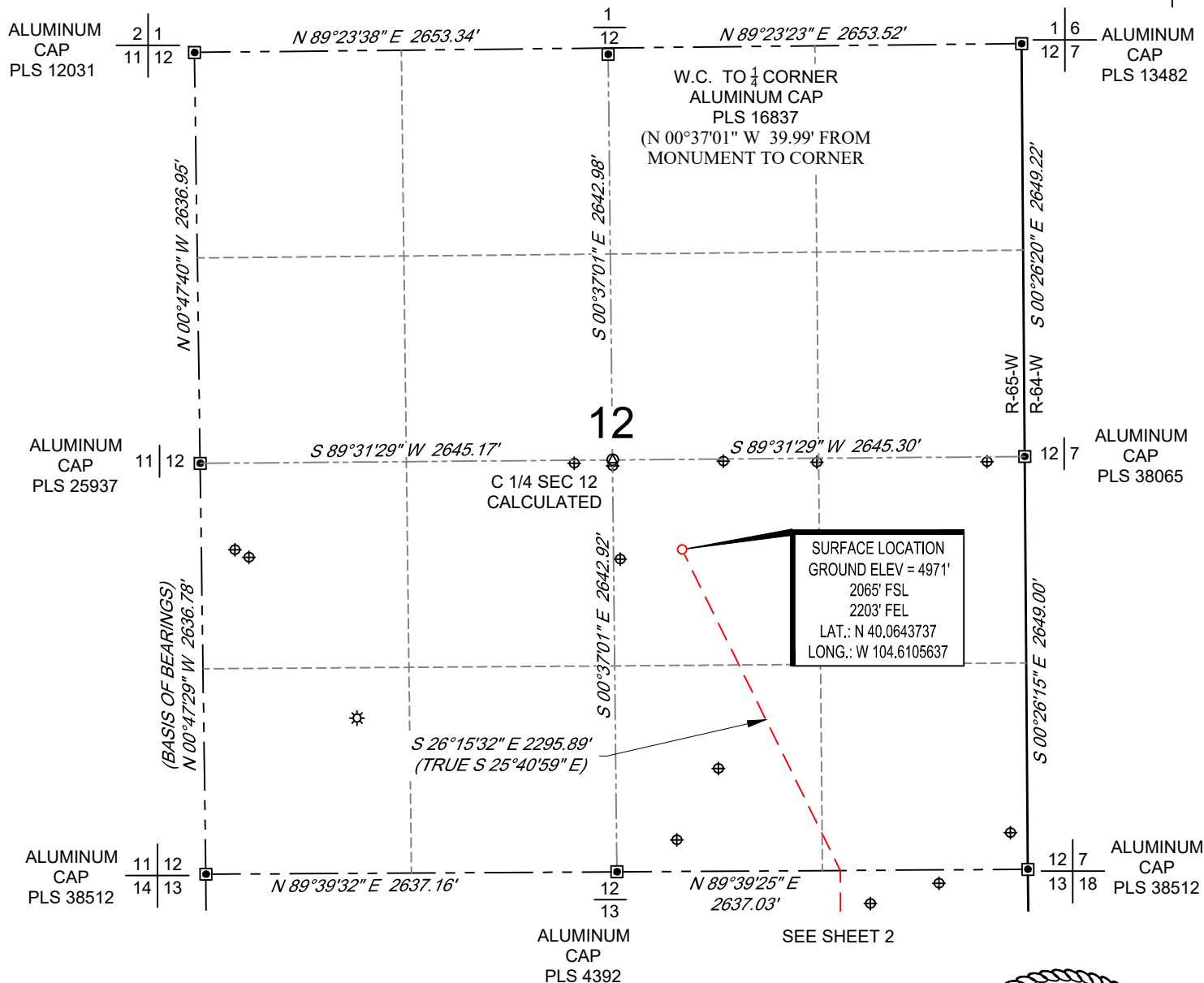


SCALE: 1" = 1000'  
0' 500' 1000'

# WELL LOCATION MAP

SHL NW/4 SE/4, SECTION 12, TOWNSHIP 1-N, RANGE 65-W  
LPL NE/4 NE/4, SECTION 13, TOWNSHIP 1-N, RANGE 65-W  
BHL SE/4 SE/4, SECTION 24, TOWNSHIP 1-N, RANGE 65-W  
WELD COUNTY, COLORADO



## NOTES

1. Horizontal (NAD 83) and vertical (NAVD 88) datum is based on the Trimble VRS Network or OPUS Solution.
2. All directions, distances, and dimensions shown hereon are based on coordinates from the "Colorado coordinate system of 1983 north zone" (article 52 of title 38, C.R.S.).
3. All section line dimensions shown hereon are based on field measurements of existing monuments and/or physical evidence found in the field unless otherwise indicated.
4. Existing water well, oil and gas wells per COGCC.
5. See Form 2A, if applicable for visible improvements within 500' of wellhead.
6. Distances to nearest section lines are measured perpendicularly.
7. This is not a land survey nor land survey plat.

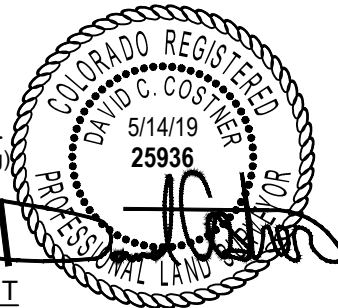
PDOP Reading: 1.2 Instrument Operator: **Brent Garcia**  
Date Surveyed: **03/25/2019**

## LEGEND

- ✱ Well Head (Existing)
- ⊕ Water Well
- ▣ Found Survey Monument

## SURVEYOR'S STATEMENT

The undersigned hereby states that the well location shown hereon was staked on the ground based on existing monumentation and/or physical evidence found in the field and is correct to the best of my knowledge, information and belief.



VERDAD RESOURCES  
SAFI 1224-11H  
JOB NO. 125170

JLS	04/10/2019	REVISION:	
SHEET :	1 OF 3	JLS	05/08/2019
FILE:LO_SAFI_1224_11H_REV3		JLS	05/14/2019

SCALE: 1" = 1000'

0' 500' 1000'

# HORIZONTAL LATERAL LOCATION MAP

SHL NW/4 SE/4, SECTION 12, TOWNSHIP 1-N, RANGE 65-W  
 LPL NE/4 NE/4, SECTION 13, TOWNSHIP 1-N, RANGE 65-W  
 BHL SE/4 SE/4, SECTION 24, TOWNSHIP 1-N, RANGE 65-W  
 WELD COUNTY, COLORADO



ALUMINUM  
CAP  
PLS 4392

SEE SHEET 1

ALUMINUM  
CAP  
PLS 38512

ALUMINUM  
CAP  
PLS 38512

$S 26^{\circ}15'32'' E 2295.89'$   
(TRUE  $S 25^{\circ}40'59'' E$ )

LANDING POINT  
0' FNL  
1203' FEL  
LAT.: N 40.0586938  
LONG.: W 104.6070088

13

ALUMINUM  
CAP  
PLS 27269

ALUMINUM  
CAP  
PLS 38452

C 1/4 SEC 13  
ALUMINUM  
CAP  
PLS 4392

ALUMINUM  
CAP  
PLS 4392

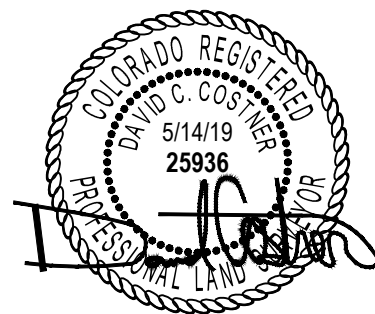
ALUMINUM  
CAP  
PLS 9644

ALUMINUM  
CAP  
PLS 10855

SEE SHEET 3

## LEGEND

- ⊛ Well Head (Existing)
- ⊕ Water Well
- ⊠ Found Survey Monument



VERDAD RESOURCES  
SAFI 1224-11H  
JOB NO. 125170

JLS	04/10/2019	REVISION:	
SHEET :	2 OF 3	JLS	05/08/2019
FILE:LO_SAFI_1224_11H_REV3		JLS	05/14/2019

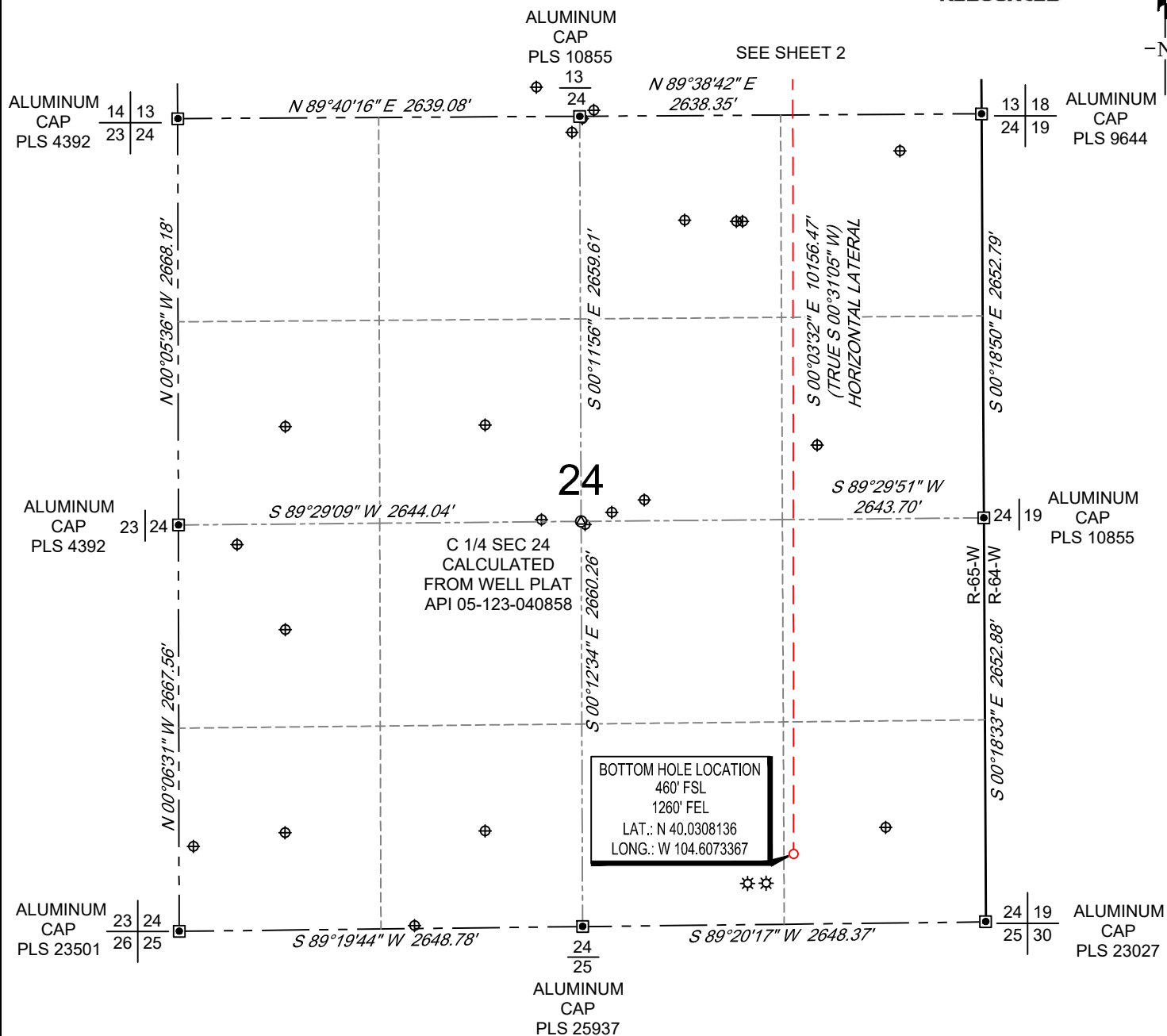
**TOPOGRAPHIC**  
LOYALTY INNOVATION LEGACY  
520 Stacy Court Ste B, Lafayette, CO 80026  
303.666.0379 www.topographic.com

SCALE: 1" = 1000'

0' 500' 1000'

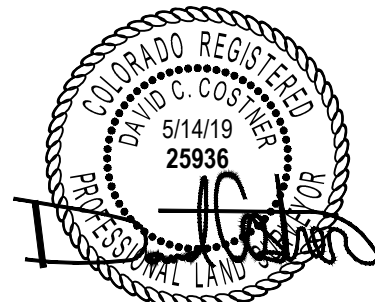
# BOTTOM HOLE MAP

SHL NW/4 SE/4, SECTION 12, TOWNSHIP 1-N, RANGE 65-W  
 LPL NE/4 NE/4, SECTION 13, TOWNSHIP 1-N, RANGE 65-W  
 BHL SE/4 SE/4, SECTION 24, TOWNSHIP 1-N, RANGE 65-W  
 WELD COUNTY, COLORADO



## LEGEND

- ⊛ Well Head (Existing)
- ⊕ Water Well
- ▣ Found Survey Monument



VERDAD RESOURCES  
 SAFI 1224-11H  
 JOB NO. 125170

JLS	04/10/2019	REVISION:	
SHEET :	3 OF 3	JLS	05/08/2019
FILE:LO_SAFI_1224_11H_REV3		JLS	05/14/2019

**TOPOGRAPHIC**  
 LOYALTY INNOVATION LEGACY  
 520 Stacy Court Ste B, Lafayette, CO 80026  
 303.666.0379 www.topographic.com