



August 14, 2019

VIA ELECTRONIC TRANSMITTAL

Oil and Gas Conservation Commission
1120 Lincoln St., Suite 801
Denver, CO 80203

Re: **30-Day Certification Letter – Rule 318A.e**

Safi 1224 07H located 2215' FSL & 2155' FEL (SHL) Weld County
Safi 1224 08H located 2065' FSL & 2251' FEL (SHL) Weld County

Dear COGCC Director,

Verdad Resources LLC (Verdad) hereby certifies to the Director that a thirty (30-day) notice has been given by certified mail to all owners in the proposed the 720 acres comprised of Section 12: SE4SW4 & SW4SE4, Section 13: E2W2 & W2E2, and Section 24 E2W2 & W2E2 of T1N-R65W.

We have not received any objections to such well location or proposed spacing unit, therefore Verdad hereby requests the Director to approve the proposed wells.

If you should have any questions or concerns regarding this permit, please contact the undersigned at 720-845-6909.

Sincerely,

Allison Schieber
Sr Regulatory Analyst
Verdad Oil and Gas Corporation

SCALE: 1" = 2000'
0' 1000' 2000'

WELLBORE SPACING UNIT WELD COUNTY, COLORADO

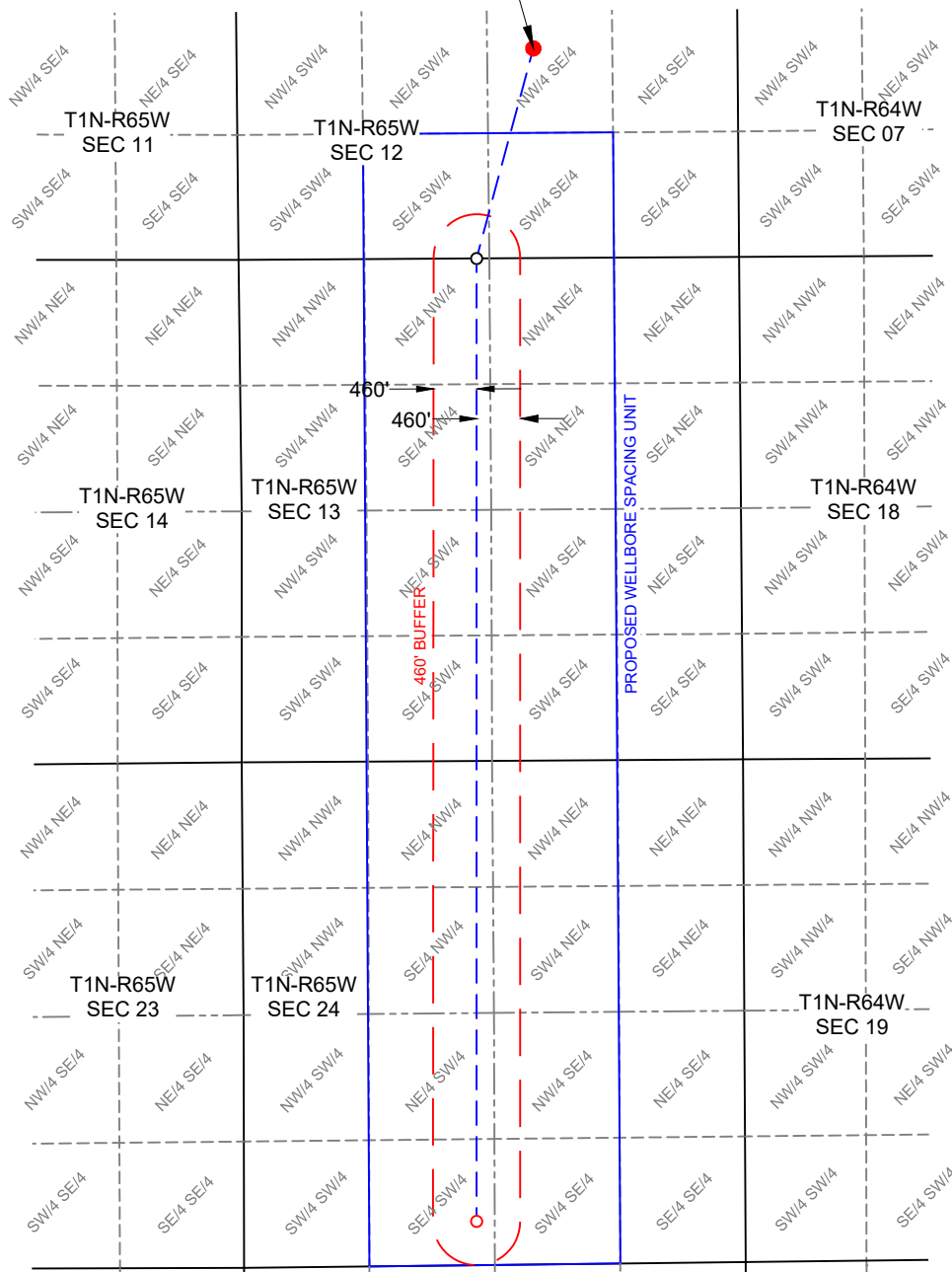


SURFACE LOCATION
GROUND ELEV = 4969'
LAT.: N 40.0647849
LONG.: W 104.6103900
2215' FSL & 2155' FEL
NW/4 SE/4, SEC 12, T1N-R65W

LANDING POINT
LAT.: N 40.0587112
LONG.: W 104.6126138
0' FNL & 2502' FWL
NE/4 NW/4, SEC 13, T1N-R65W

BOTTOM HOLE LOCATION
LAT.: N 40.0308070
LONG.: W 104.6129752
460' FSL & 2456' FWL
SE/4 SW/4, SEC 24, T1N-R65W

SAFI 1224-7H



LEGEND

- WELL BORE
- 460' BUFFER
- WELL BORE SPACING UNIT
- SURFACE HOLE LOCATION
- LANDING POINT
- BOTTOM HOLE LOCATION

NOTES

1. Horizontal (NAD 83) and vertical (NAVD 88) datum is based on the Trimble VRS Network or OPUS Solution.
2. See Form 2A, if applicable for visible improvements within 500' of wellhead.
3. Distances to nearest section lines are measured perpendicularly.
4. This is not a land survey nor land survey plat.

PDOP Reading: 1.2 Instrument Operator: **Brent Garcia**
Date Surveyed: **03/25/2019**

SURVEYOR'S STATEMENT

The undersigned hereby states that the well location shown hereon was staked on the ground based on existing monumentation and/or physical evidence found in the field and is correct to the best of my knowledge, information and belief.

VERDAD RESOURCES
SAFI 1224-07H
JOB NO. 125170

JLS 05/14/19
SHEET : 1 OF 1
FILE: CD_WELLBORE_SPACING_SAFI_1224_7H_REV1

REVISION:
JLS 05/14/19

TOPOGRAPHIC
LOYALTY INNOVATION LEGACY
520 Stacy Court Ste B, Lafayette, CO 80026
303.666.0379 www.topographic.com