



August 14, 2019

VIA ELECTRONIC TRANSMITTAL

Oil and Gas Conservation Commission  
1120 Lincoln St., Suite 801  
Denver, CO 80203

Re: **30-Day Certification Letter – Rule 318A.e**

**Safi 1224 03H** located 2215' FSL & 2219' FEL (SHL) Weld County  
**Safi 1224 04H** located 2215' FSL & 2203' FEL (SHL) Weld County  
**Safi 1224 05H** located 2215' FSL & 2187' FEL (SHL) Weld County

Dear COGCC Director,

Verdad Resources LLC (Verdad) hereby certifies to the Director that a thirty (30-day) notice has been given by certified mail to all owners in the proposed the 720 acres comprised of Section 12: S2SW4, Section 13: W2, and Section 24 W2 of T1N-R65W.

We have not received any objections to such well location or proposed spacing unit, therefore Verdad hereby requests the Director to approve the proposed wells.

If you should have any questions or concerns regarding this permit, please contact the undersigned at 720-845-6909.

Sincerely,

Allison Schieber  
Sr Regulatory Analyst  
Verdad Oil and Gas Corporation

SCALE: 1" = 2000'  
0' 1000' 2000'

# WELLBORE SPACING UNIT WELD COUNTY, COLORADO



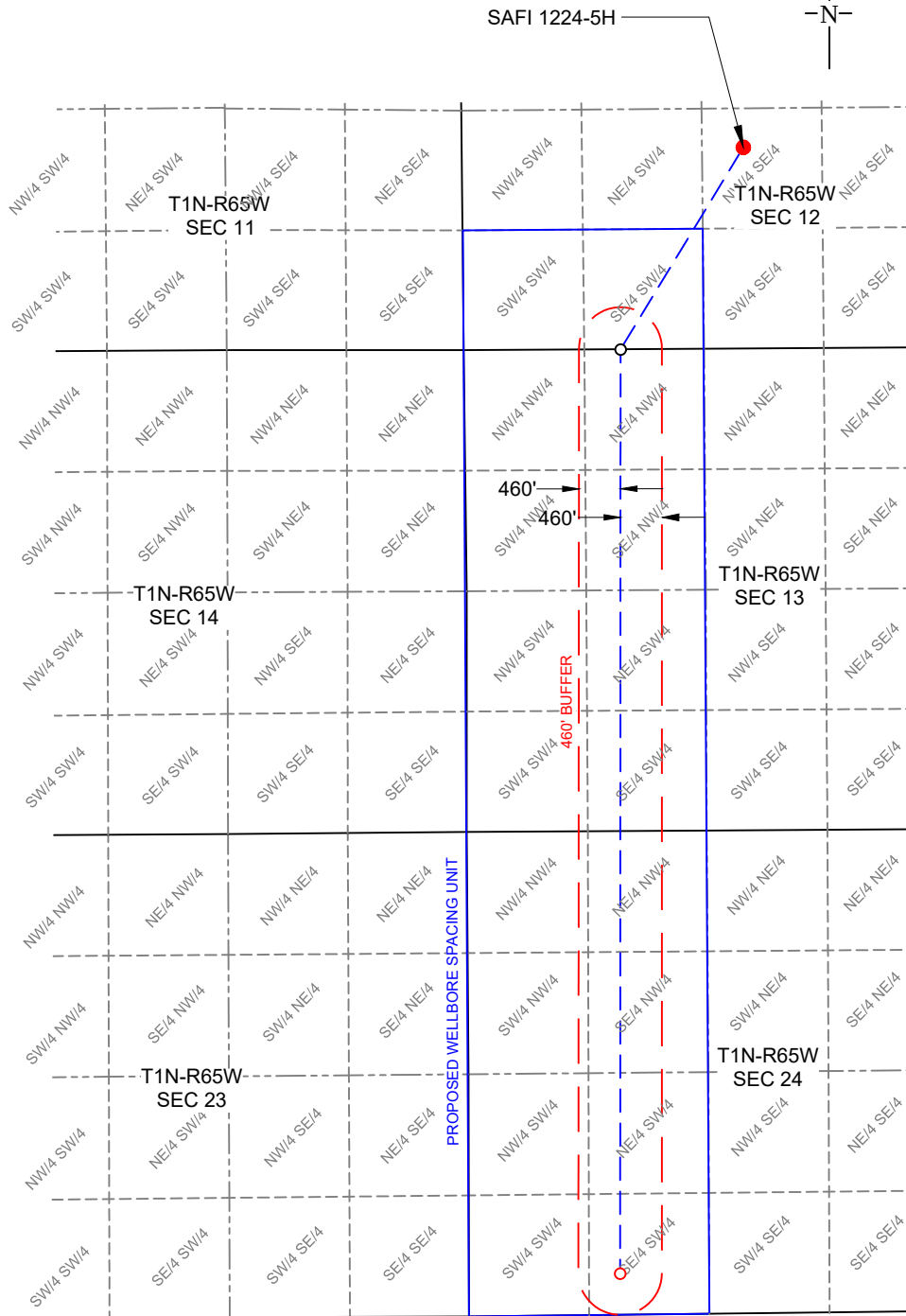
**SURFACE LOCATION**  
GROUND ELEV = 4970'  
LAT.: N 40.0647853  
LONG.: W 104.6105044  
2215' FSL & 2187' FEL  
NW/4 SE/4, SEC 12, T1N-R65W

**LANDING POINT**  
LAT.: N 40.0587199  
LONG.: W 104.6154163  
0' FNL & 1718' FWL  
NE/4 NW/4, SEC 13, T1N-R65W

**BOTTOM HOLE LOCATION**  
LAT.: N 40.0308032  
LONG.: W 104.6157944  
460' FSL & 1667' FWL  
SE/4 SW/4, SEC 24, T1N-R65W

## LEGEND

- WELL BORE
- 460' BUFFER
- WELL BORE SPACING UNIT
- SURFACE HOLE LOCATION
- LANDING POINT
- BOTTOM HOLE LOCATION



## NOTES

- Horizontal (NAD 83) and vertical (NAVD 88) datum is based on the Trimble VRS Network or OPUS Solution.
- See Form 2A, if applicable for visible improvements within 500' of wellhead.
- Distances to nearest section lines are measured perpendicularly.
- This is not a land survey nor land survey plat.

PDOP Reading: 1.2 Instrument Operator: **Brent Garcia**  
Date Surveyed: **03/25/2019**

## SURVEYOR'S STATEMENT

The undersigned hereby states that the well location shown hereon was staked on the ground based on existing monumentation and/or physical evidence found in the field and is correct to the best of my knowledge, information and belief.



VERDAD RESOURCES  
**SAFI 1224-05H**  
**JOB NO. 125170**

JLS	05/08/19	REVISION:
SHEET :	1 OF 1	JLS 05/14/19
FILE:	CD_WELLBORE_SPACING_SAFI_1224_5H_REV1	