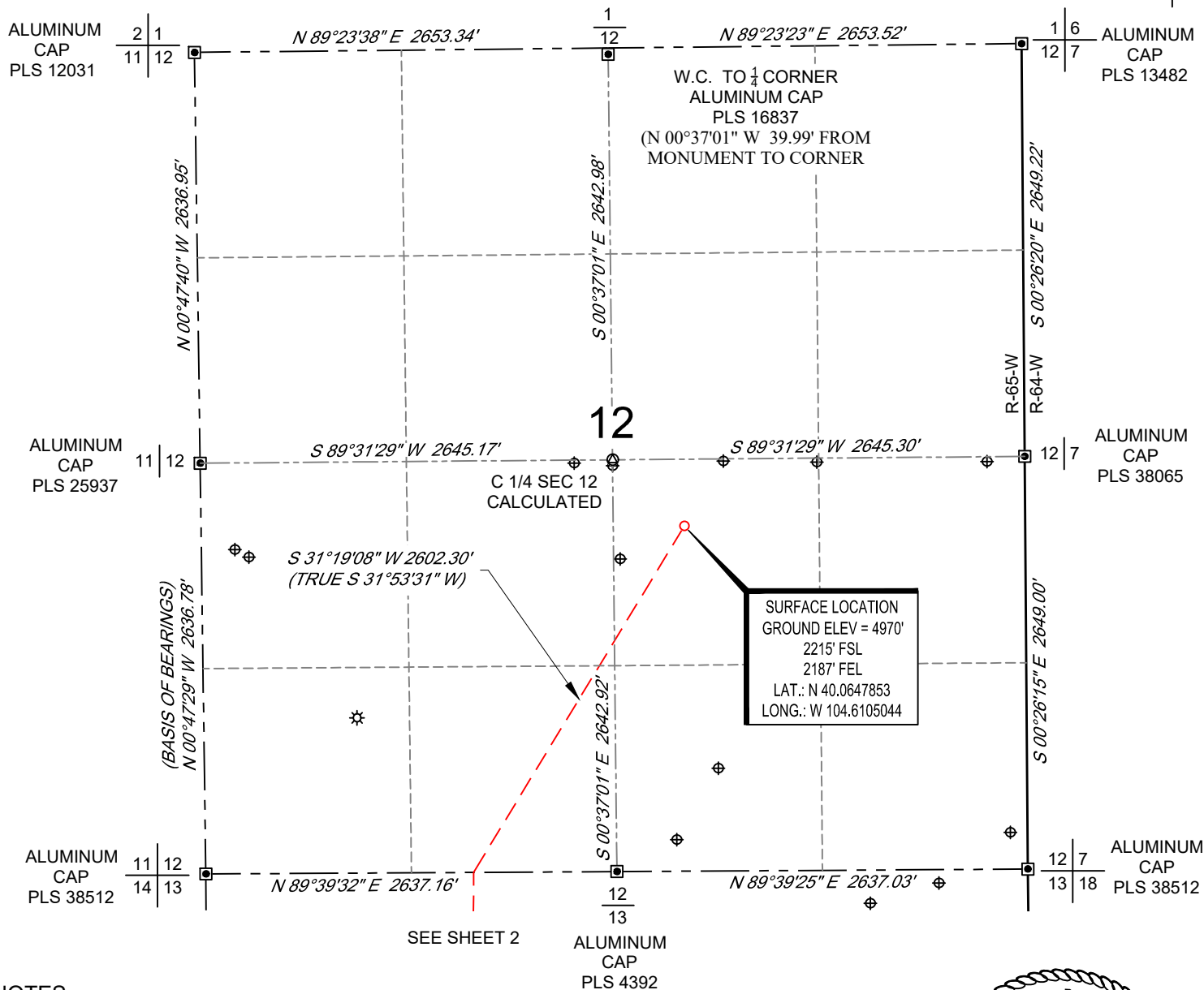


SCALE: 1" = 1000'
0' 500' 1000'

WELL LOCATION MAP

SHL NW/4 SE/4, SECTION 12, TOWNSHIP 1-N, RANGE 65-W
LPL NE/4 NW/4, SECTION 13, TOWNSHIP 1-N, RANGE 65-W
BHL SE/4 SW/4, SECTION 24, TOWNSHIP 1-N, RANGE 65-W
WELD COUNTY, COLORADO



NOTES

1. Horizontal (NAD 83) and vertical (NAVD 88) datum is based on the Trimble VRS Network or OPUS Solution.
2. All directions, distances, and dimensions shown hereon are based on coordinates from the "Colorado coordinate system of 1983 north zone" (article 52 of title 38, C.R.S.).
3. All section line dimensions shown hereon are based on field measurements of existing monuments and/or physical evidence found in the field unless otherwise indicated.
4. Existing water well, oil and gas wells per COGCC.
5. See Form 2A, if applicable for visible improvements within 500' of wellhead.
6. Distances to nearest section lines are measured perpendicularly.
7. This is not a land survey nor land survey plat.

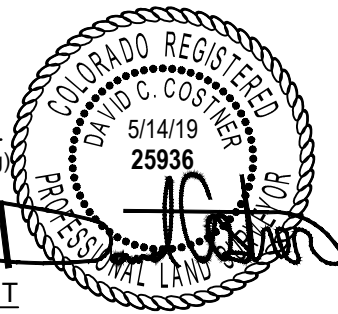
PDOP Reading: 1.2 Instrument Operator: **Brent Garcia**
Date Surveyed: **03/25/2019**

LEGEND

- ⊛ Well Head (Existing)
- ⊕ Water Well
- ⊠ Found Survey Monument

SURVEYOR'S STATEMENT

The undersigned hereby states that the well location shown hereon was staked on the ground based on existing monumentation and/or physical evidence found in the field and is correct to the best of my knowledge, information and belief.



VERDAD RESOURCES
SAFI 1224-05H
JOB NO. 125170

JLS	04/10/2019	REVISION:	
SHEET :	1 OF 3	JLS	05/08/2019
FILE:LO_SAFI_1224_5H_REV3		JLS	05/14/2019

SCALE: 1" = 1000'

0' 500' 1000'

HORIZONTAL LATERAL LOCATION MAP

SHL NW/4 SE/4, SECTION 12, TOWNSHIP 1-N, RANGE 65-W
 LPL NE/4 NW/4, SECTION 13, TOWNSHIP 1-N, RANGE 65-W
 BHL SE/4 SW/4, SECTION 24, TOWNSHIP 1-N, RANGE 65-W
 WELD COUNTY, COLORADO



ALUMINUM
CAP
PLS 4392

SEE SHEET 1

ALUMINUM
CAP
PLS 38512

ALUMINUM
CAP
PLS 38512

LANDING POINT
0' FNL
1718' FWL
LAT.: N 40.0587199
LONG.: W 104.6154163

S 31°19'08" W 2602.30'
(TRUE S 31°53'31" W)

13

ALUMINUM
CAP
PLS 27269

ALUMINUM
CAP
PLS 38452

C 1/4 SEC 13
ALUMINUM
CAP
PLS 4392

S 00°01'30" W 10169.93'
(TRUE S 00°35'47" W)
HORIZONTAL LATERAL

ALUMINUM
CAP
PLS 4392

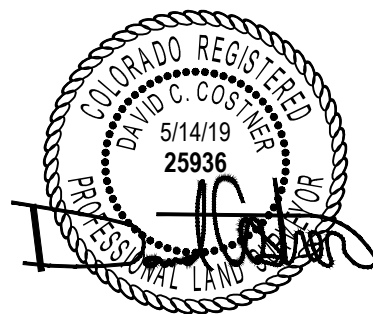
ALUMINUM
CAP
PLS 9644

ALUMINUM
CAP
PLS 10855

SEE SHEET 3

LEGEND

- ⊛ Well Head (Existing)
- ⊕ Water Well
- ▣ Found Survey Monument



VERDAD RESOURCES
SAFI 1224-05H
JOB NO. 125170

JLS	04/10/2019	REVISION:	
SHEET :	2 OF 3	JLS	05/08/2019
FILE:LO_SAFI_1224_5H_REV3		JLS	05/14/2019

TOPOGRAPHIC
 LOYALTY INNOVATION LEGACY
 520 Stacy Court Ste B, Lafayette, CO 80026
 303.666.0379 www.topographic.com

SCALE: 1" = 1000'

0' 500' 1000'

BOTTOM HOLE MAP

SHL NW/4 SE/4, SECTION 12, TOWNSHIP 1-N, RANGE 65-W
 LPL NE/4 NW/4, SECTION 13, TOWNSHIP 1-N, RANGE 65-W
 BHL SE/4 SW/4, SECTION 24, TOWNSHIP 1-N, RANGE 65-W
 WELD COUNTY, COLORADO



SEE SHEET 2

ALUMINUM
CAP
PLS 10855

ALUMINUM
CAP
PLS 4392

14 13
23 24

N 89°40'16" E 2639.08'

13 24

N 89°38'42" E 2638.35'

ALUMINUM
CAP
PLS 9644

13 18
24 19

N 00°05'36" W 2668.18'

S 00°01'30" W 10169.93'
(TRUE S 00°35'47" W)
HORIZONTAL LATERAL

S 00°11'56" E 2659.61'

S 00°18'50" E 2652.79'

24

ALUMINUM
CAP
PLS 4392

23 24

S 89°29'09" W 2644.04'

S 89°29'51" W 2643.70'

ALUMINUM
CAP
PLS 10855

24 19

N 00°06'31" W 2667.56'

BOTTOM HOLE LOCATION
460' FSL
1667' FWL
LAT.: N 40.0308032
LONG.: W 104.6157944

S 00°12'34" E 2660.26'

R-65-W R-64-W
S 00°18'33" E 2652.88'

ALUMINUM
CAP
PLS 23501

23 24
26 25

S 89°19'44" W 2648.78'

24 25

S 89°20'17" W 2648.37'

ALUMINUM
CAP
PLS 23027

24 19
25 30

ALUMINUM
CAP
PLS 25937

LEGEND

- Well Head (Existing)
- Water Well
- Found Survey Monument



VERDAD RESOURCES
SAFI 1224-05H
JOB NO. 125170

JLS	04/10/2019	REVISION:	
SHEET :	3 OF 3	JLS	05/08/2019
FILE:LO_SAFI_1224_5H_REV3		JLS	05/14/2019

TOPOGRAPHIC
LOYALTY INNOVATION LEGACY
520 Stacy Court Ste B, Lafayette, CO 80026
303.666.0379 www.topographic.com