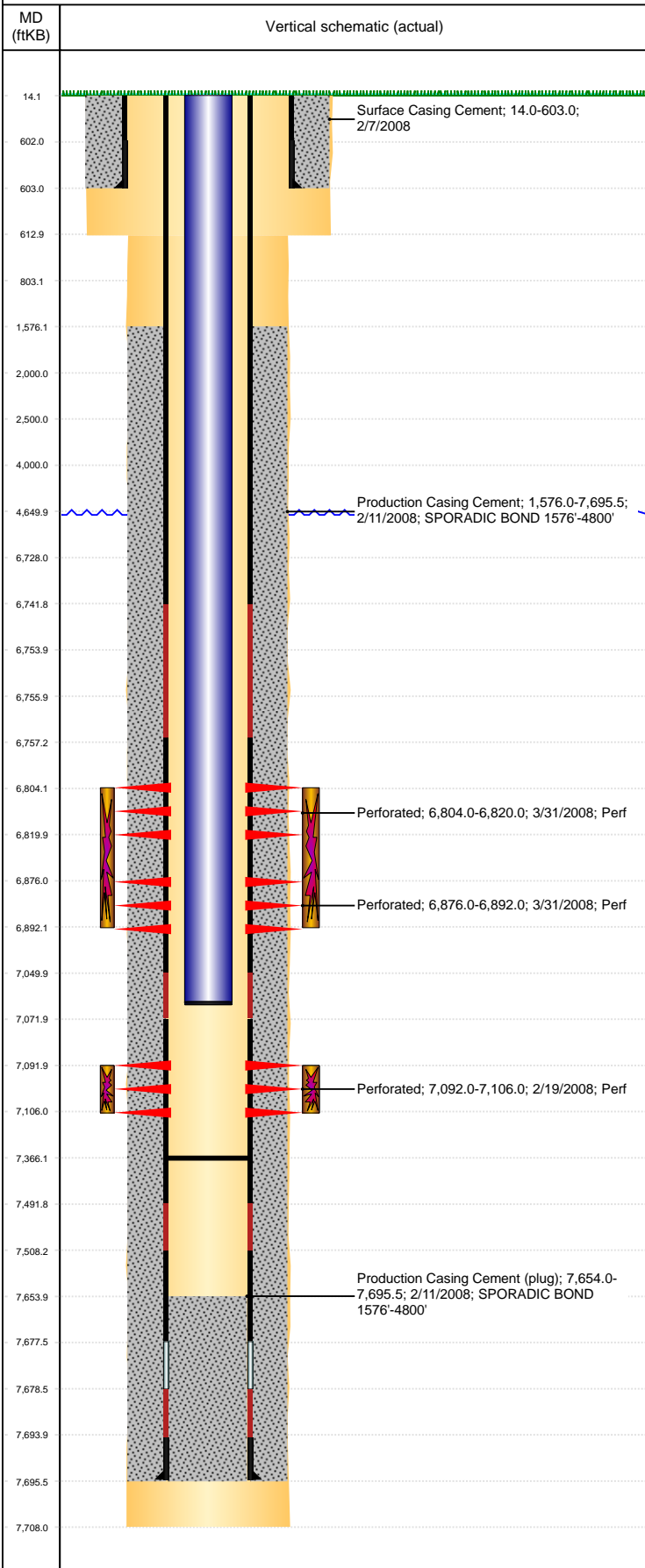


**Well Name: PEDRO STATE G36-18**

VERTICAL, ORIGINAL HOLE, 8/19/2019 4:39:05 PM



Well Header									
API 05-123-25357		Business Unit DJ BASIN		District 15		Well Config VERTICAL			
KB - GL / MSL (ft... 14.00		Spud Date 2/6/2008		P & A Date		Well Production Status PR		SoRT No	
Comment									
Surface Location (Congressional)									
Qtr 3 NW	Qtr 4 NE	Section 36	Twonshp 4	Twonsh... N	Range 65	Rng E... W	Actual Latitude (°) 40.27233627	Actual Longitude (°) -104.61149947	
Wellbore Sections									
Section Des		Size (in)		Act Top, MD (ftKB)		Act Btm, MD (ftKB)			
SURFACE		12 1/4		14		613			
PRODUCTION		7 7/8		613		7,708			
Casing Strings									
Csg Des		Run Date		OD (in)		Wt/Len (lb/ft)		Grade	
Surface		2/7/2008		8 5/8		24.00		J-55	
Production		2/11/2008		4 1/2		11.60		M-80	
Top, MD (ftKB)		MD (ftKB)							
14.0		603.0							
14.0		7,695.5							
Cement									
Des		Start Date		Top (ftKB)		Btm (ftKB)			
Surface Casing Cement		2/7/2008		14.0		603.0			
Production Casing Cement		2/11/2008		1,576.0		7,695.5			
Zone Statuses									
Zone Name		Status Date		Status		Fluid Type		Job	
CODELL		4/21/2008		PR				DRILLING/COMPLETION - ORIGINAL, 2/6/2008...	
CODELL		8/8/2012		PR				RE-FRAC, 6/21/2012 06:00	
NIOBRARA		4/21/2008		PR				DRILLING/COMPLETION - ORIGINAL, 2/6/2008...	
Prod Method									
Perforation Data									
Linked Zone		Bnch/Stg		Entered Shot Total		Top (ftKB)		Btm (ftKB)	
NIOBRARA, ORIGINAL HOLE				64		6,804.00		6,820.00	
NIOBRARA, ORIGINAL HOLE				64		6,876.00		6,892.00	
CODELL, ORIGINAL HOLE				56		7,092.00		7,106.00	
Date									
3/31/2008									
3/31/2008									
2/19/2008									
Stimulation Intervals									
Zone		Start Date		Top (ftKB)		Btm (ftKB)			
NIOBRARA, ORIGINAL HOLE		3/31/2008		6,804.0		6,892.0			
CODELL, ORIGINAL HOLE		7/7/2012		7,092.0		7,106.0			
CODELL, ORIGINAL HOLE		3/31/2008		7,092.0		7,106.0			
Other In Hole									
Run Date		Des		OD (in)		Top (ftKB)		Btm (ftKB)	
Logs									
Date		Type				Top, MD (ftKB)		Btm, MD (ftKB)	
2/11/2008		Caliper/Comp. Density/Neutron/GR/SP/ML				2,600.0		7,709.0	
2/11/2008		DIL/GR/SP/Caliper				604.0		7,709.0	
2/18/2008		CBL/CCL/GR				1,460.0		7,647.0	
9/25/2013		GYRO				0.0		7,000.0	
Plug Back Total Depths									
Date		Type		Com				Depth (ftKB)	
8/3/2012				TAGGED FILL @ 7370' W/265' RAT HOLE				7,370.0	
7/11/2014		FILL		TBG TALLY MEASUREMENT.				7,366.2	