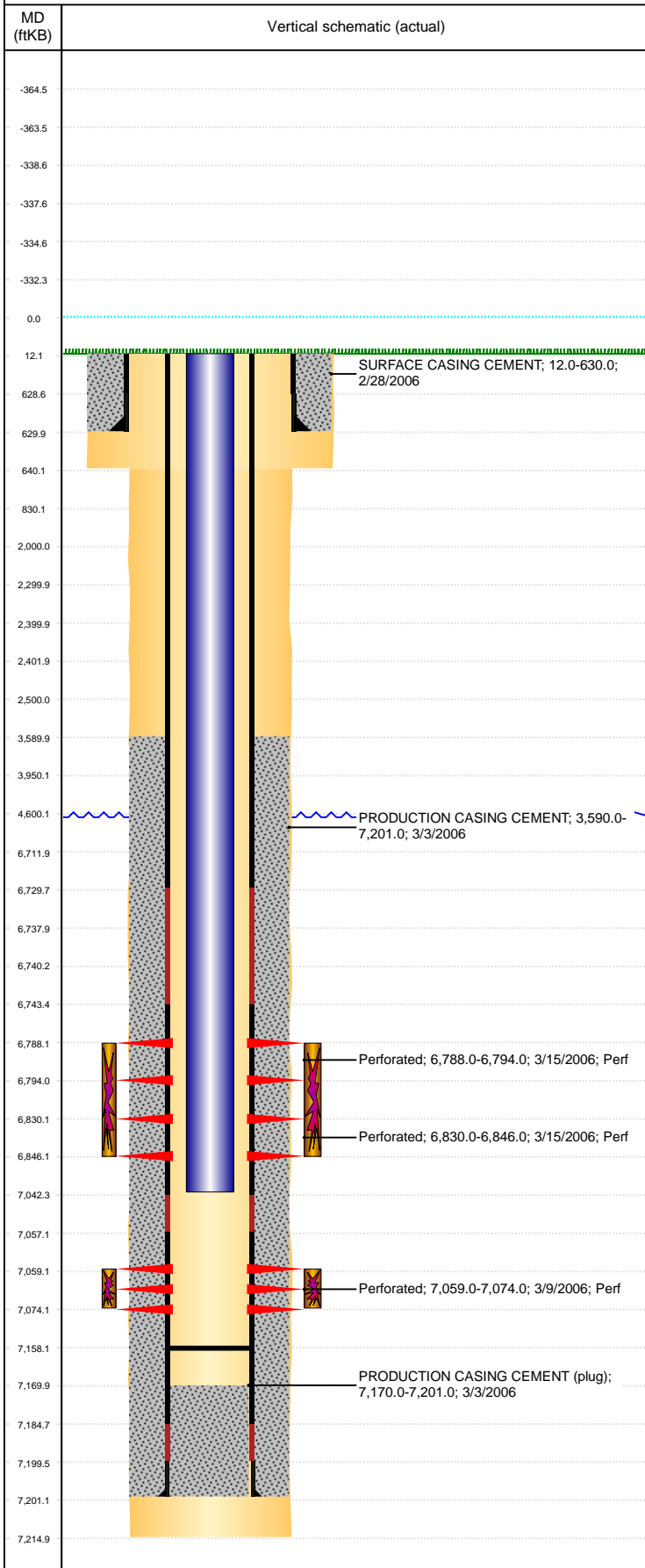


Well Name: DECHANT D07-25

VERTICAL, ORIGINAL HOLE, 8/19/2019 11:03:03 AM



Well Header										
API 05-123-23413		Business Unit DJ BASIN			District 15		Well Config VERTICAL			
KB - GL / MSL (ft... 12.00		Spud Date 2/27/2006		P & A Date		Well Production Status PR			SoRT No	
Comment										
Surface Location (Congressional)										
Qtr 3 NE	Qtr 4 SW	Section 7	Twonshp 3	Twonsh... N	Range 64	Rng E... W	Actual Latitude (°) 40.23624246	Actual Longitude (°) -104.59810338		
Wellbore Sections										
Section Des			Size (in)			Act Top, MD (ftKB)		Act Btm, MD (ftKB)		
SURFACE			12 1/4			12		640		
PRODUCTION			7 7/8			640		7,215		
Casing Strings										
Csg Des			Run Date		OD (in)	Wt/Len (lb/ft)	Grade	Top, MD (ftKB)	MD (ftKB)	
Surface			2/28/2006		8 5/8	24.00		12.0	630.0	
Production			3/3/2006		4 1/2	11.60	M-80	12.0	7,201.0	
Cement										
Des					Start Date		Top (ftKB)		Btm (ftKB)	
SURFACE CASING CEMENT					2/28/2006		12.0		630.0	
PRODUCTION CASING CEMENT					3/3/2006		3,590.0		7,201.0	
Zone Statuses										
Zone Name		Status Date	Status	Fluid Type	Job				Prod Method	
CODELL		3/17/2006	PR		DRILLING/COMPLETION - ORIGINAL, 2/27/2006...					
NIOBRARA		3/17/2006	PR		DRILLING/COMPLETION - ORIGINAL, 2/27/2006...					
Perforation Data										
Linked Zone			Bnch/Stg	Entered Shot Total	Top (ftKB)		Btm (ftKB)		Date	
NIOBRARA, ORIGINAL HOLE			A	132	6,788.00		6,794.00		3/15/2006	
NIOBRARA, ORIGINAL HOLE			B	132	6,830.00		6,846.00		3/15/2006	
CODELL, ORIGINAL HOLE				60	7,059.00		7,074.00		3/9/2006	
Stimulation Intervals										
Zone					Start Date		Top (ftKB)		Btm (ftKB)	
NIOBRARA, ORIGINAL HOLE					3/15/2006		6,788.0		6,846.0	
CODELL, ORIGINAL HOLE					3/15/2006		7,059.0		7,074.0	
Other In Hole										
Run Date		Des				OD (in)	Top (ftKB)		Btm (ftKB)	
12/21/2018		Plunger Lift				1 7/8				
Logs										
Date		Type					Top, MD (ftKB)		Btm, MD (ftKB)	
3/3/2006		COMPENSATED DENSITY					3,500.0		7,212.0	
3/3/2006		INDUCTION					630.0		7,212.0	
3/9/2006		CBL/CCL/GR					3,436.0		7,170.0	
3/9/2006		CBL/CCL/GR					5,000.0		7,170.0	
3/8/2017		GYRO					0.0		6,950.0	
Plug Back Total Depths										
Date		Type			Com				Depth (ftKB)	
3/9/2006		FILL			DEPTH LOGGER ON CBL				7,170.0	
6/14/2006		FILL			CLEAN OUT TO LAND TBG				7,158.0	