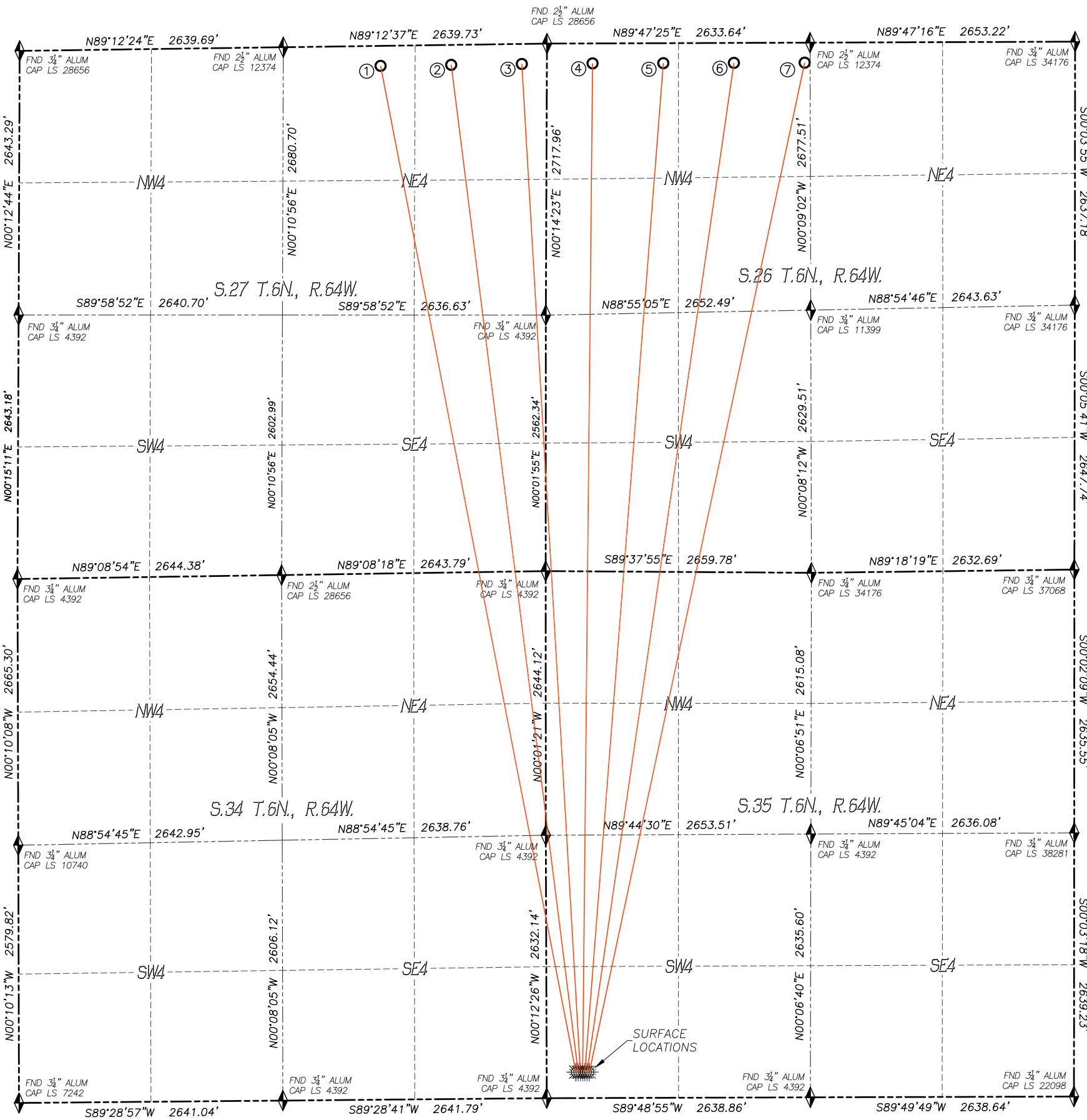


MULTI-WELL PLAN  
A35-13 WELL PAD  
SECTION 35, TOWNSHIP 6 NORTH, RANGE 64 WEST OF THE 6TH P.M.



Bottom Hole Location						
Slot	Well Name	Latitude	Longitude	Footage		BH Location STR
1	Reveille A34-735	N40.46397°	W104.53275°	200' FNL	1665' FEL	27-6N-64W
2	Reveille A34-725	N40.46400°	W104.53021°	200' FNL	958' FEL	27-6N-64W
3	Reveille A34-714	N40.46403°	W104.52767°	200' FNL	251' FEL	27-6N-64W
4	Reveille A35-783	N40.46404°	W104.52513°	200' FNL	457' FWL	26-6N-64W
5	Reveille A35-772	N40.46405°	W104.52259°	200' FNL	1165' FWL	26-6N-64W
6	Reveille A35-762	N40.46406°	W104.52005°	200' FNL	1872' FWL	26-6N-64W
7	Reveille A35-750	N40.46406°	W104.51750°	200' FNL	2580' FWL	26-6N-64W

LEGEND

FOUND MONUMENT  
AS DESCRIBED

PROPOSED WELL

EXISTING WELL

BOTTOM HOLE

ABANDONED WELL

CALCULATED POSITION

01200'

SCALE: 1" = 1200'

noble energy

DALEY LAND  
SURVEYING, INC.  
303.953.9841

\\Survey\0810237\Drawings\A35-13 Pad\A35-13 WWP.dwg

# MULTI-WELL PLAN

## A35-13 WELL PAD

SECTION 35, TOWNSHIP 6 NORTH, RANGE 64 WEST OF THE 6TH P.M.

