

July 31, 2019

Lindsey Rider
EHS Lead
Caerus Oil and Gas
143 Diamond Avenue
Parachute, CO 81635

RE: PL25NW Well Pad Final Reclamation Status

Dear Lindsey,

Per your request, WestWater biologists have completed vegetation monitoring for the above referenced reclaimed location. We utilized the Bureau of Land Management's (BLM) Assessment, Inventory, and Monitoring (AIM) strategy for data collection and the resulting data has been entered into the Database for Inventory, Monitoring and Assessment (DIMA). In addition to monitoring the reclaimed area we selected and inventoried a reference site for this location.

Attached you will find the results summary and photos of the reclaim and reference areas. Based on the information we collected this year and our understanding of BLM and Colorado Oil & Gas Conservation Commission (COGCC) final reclamation requirements this site meets the 80% reference criteria for Final Abandonment Notice.

If there is any additional information we can provide or clarify please contact me.

Sincerely,



Environmental Scientist/Project Manager

Percent Cover Summary Table		
	Reference Site	Reclaim Site
% Foliar Cover	74.0	74.7
% Basal Cover	2.0	0.7
% Bare ground	22.0	14.7
% Desirable Foliar Cover	74.0	67.9
% Desirable of Reference Site		91.8
80% Desirable of Reference?	Site meets 80% of reference criteria.	

*Percent Foliar Cover represents all points hit along transect of specific species including lower canopy layers; thus, in some cases percent foliar cover can exceed 100%.



Reclaim Transect 1



Reclaim Transect 2



Reclaim Transect 3

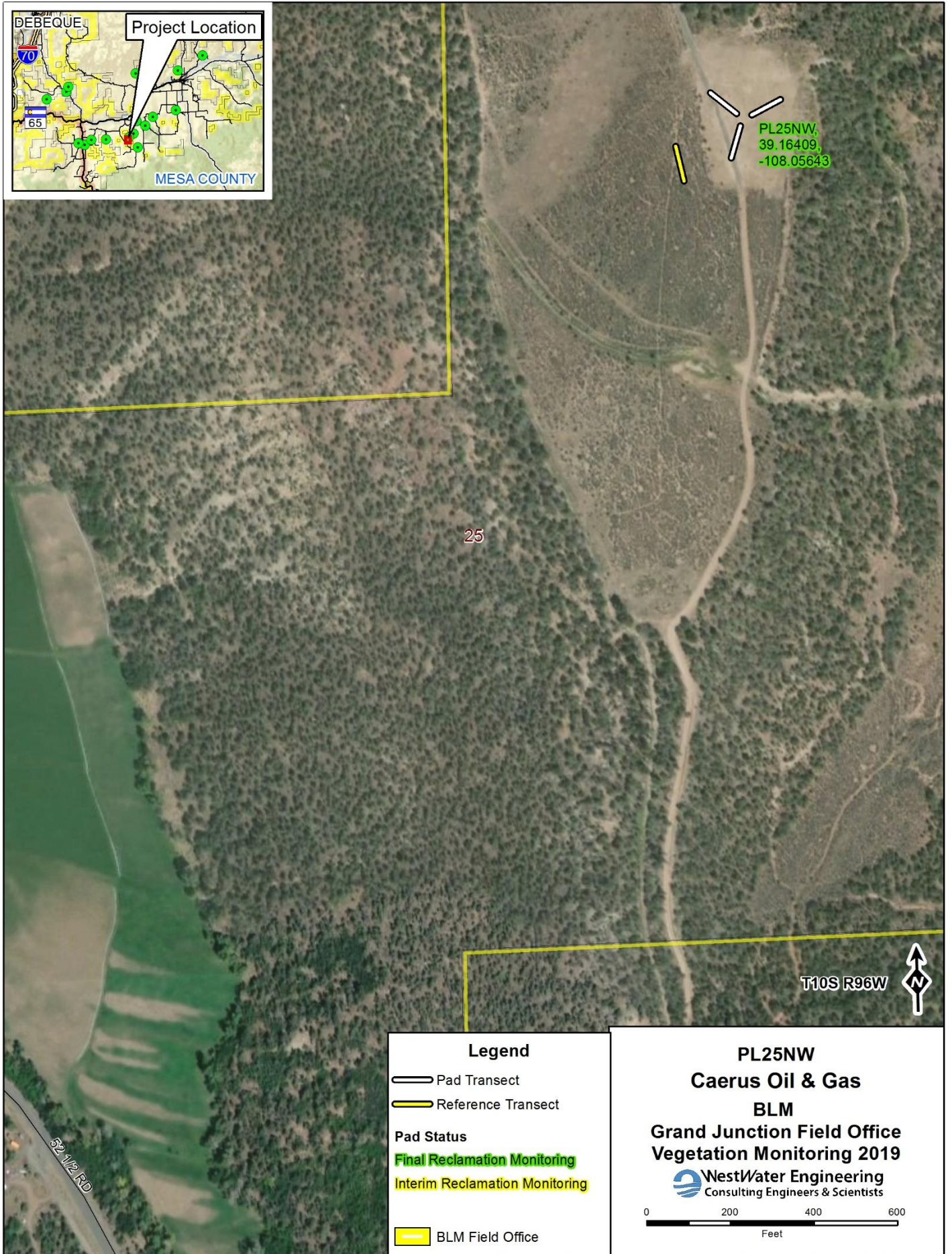
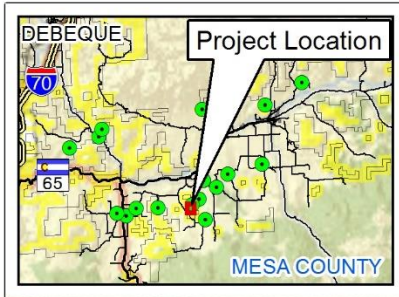


Reference Transect

Final Reclamation Site Percent Foliar Cover by Species		
Caerus Oil and Gas		
Location:	PL25NW	
Date:	7/19/2019	
Plot:	Final Reclamation	
Scientific Name	Common Name	Foliar Cover
Graminoids		
Agropyron cristatum	crested wheatgrass	1.3
Bromus arvensis	field brome	0.7
Bromus inermis	smooth brome	3.3
Dactylis glomerata	orchardgrass	0.7
Elymus lanceolatus	thickspike wheatgrass	5.3
Koeleria macrantha	prairie Junegrass	1.3
Psathyrostachys juncea	Russian wildrye	8.0
Thinopyrum intermedium	intermediate wheatgrass	16.0
Thinopyrum ponticum	tall wheatgrass	32.0
Grass cover subtotal		68.6
Desirable grass cover subtotal		67.9
Forbs/Succulents		
Alyssum desertorum Stapf	desert madwort	2.7
Convolvulus arvensis L.	field bindweed	2.7
Polygonum aviculare L.	prostrate knotweed	0.7
Forb cover subtotal		6.1
Desirable forb cover subtotal		
Shrubs		
Shrub cover subtotal		0.0
Desirable shrub cover subtotal		
Trees		
Desirable trees cover subtotal		0

Bold = Desirable Species

Final Reclamation Site Percent Foliar Cover by Species		
Caerus Oil and Gas		
Location:	PL25NW	
Date:	7/19/2019	
Plot:	Reference	
Scientific Name	Common Name	Foliar Cover
Graminoids		
Achnatherum hymenoides	Indian ricegrass	2.0
Agropyron cristatum	crested wheatgrass	50.0
Grass cover subtotal		52.0
Desirable grass cover subtotal		52.0
Forbs/Succulents		
Medicago sativa	alfalfa	2.0
Forb cover subtotal		2.0
Desirable forb cover subtotal		2
Shrubs		
Artemisia tridentata var. wyomingensis	Wyoming sagebrush	20.0
Shrub cover subtotal		20.0
Desirable shrub cover subtotal		20.0
Trees		
Desirable trees cover subtotal		
Bold = Desirable Species		



Legend

- Pad Transect
- Reference Transect

Pad Status

- Final Reclamation Monitoring
- Interim Reclamation Monitoring

- BLM Field Office

PL25NW
Caerus Oil & Gas
BLM

Grand Junction Field Office
Vegetation Monitoring 2019

WestWater Engineering
 Consulting Engineers & Scientists

