

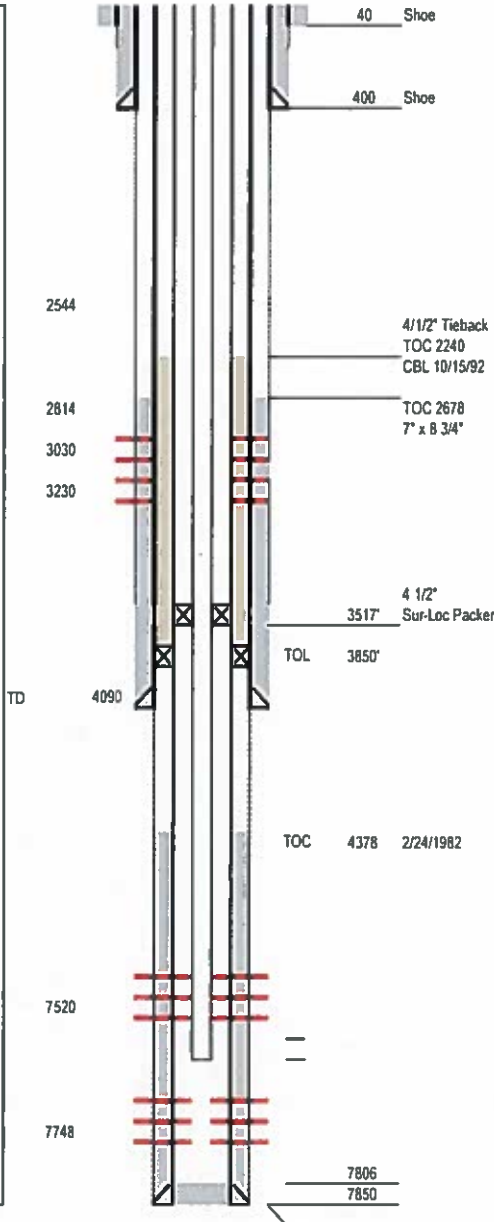
LARAMIE ENERGY

Current Wellbore Diagram

Not to Scale

C B

Geological Tops	Depth
Mesa Verde	0
CAMEO	2544
ROLLINS	2814
COZZ	3030
CORC	3230
DAK	7520
MORRISON	7748



Well Name HSC 1-21
 API 05-077-0845
 Surface Location SWSW S21, T9S, R97W
 GPS Coordinates 39.254081 -108.229318
 Bottom Hole Loc
 Field Shire Gulch #77450
 County, State Mesa, CO # 077
 Spud Date 3/8/1982
 Completion Date 6/8/1982 10/16/1992
 Diagram Date 6/7/2019
 KB Elevation 5671
 KB 15
 GL Elevation 5656

Fed Lease: No

Hole 24"
 Conductor 20" .25" wall @ 40'
 Cement Surface

Surface Hole 13 3/4" @ 400'
 Casing 9 5/8" 36.0# K55 to 400
 TOC Surface

Intermediates 8 3/4" @ 4090'
 Casing 7" 23.0# K55 STC @ 4090
 Cement Stage 1
 TOC 2770' SOZ Job 2220'

Production 6 1/4" @ 7850'
 Linert 4/12" 11.6 K55 LTC @ 7850 Tieback
 Tie-back 4/12" 11.6 K55 LTC to surface
 Hanger 3850'
 Cement Stage 1 Tie-back * Tie-back TOC inside
 TOC 4378 2678 4 1/2" x 7" Annulus

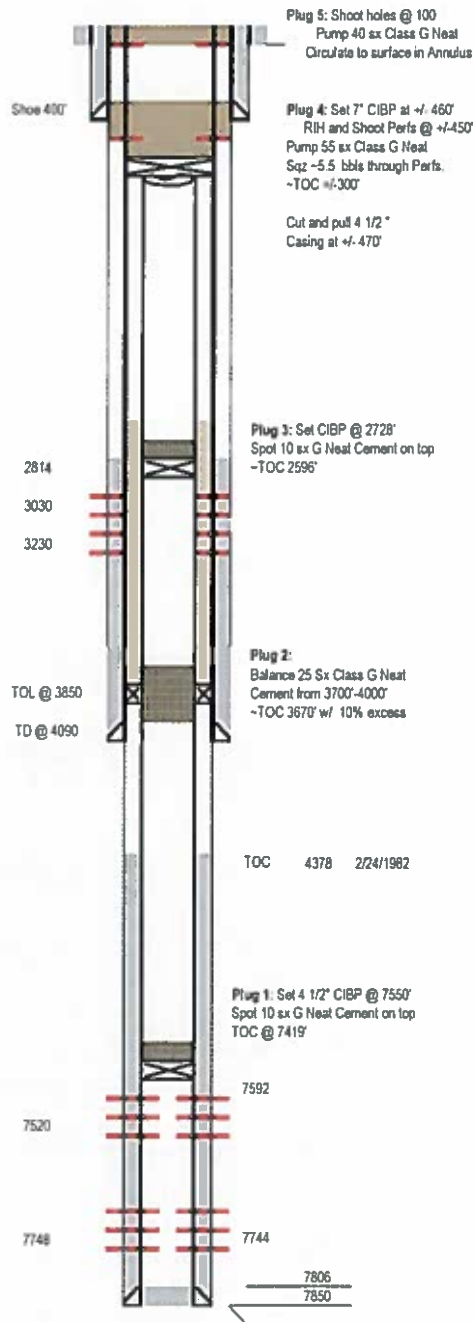
Perforations 3030-3292
 7592-7744

Tubing 2-3/8" 4.7# L80 @ 7566', 244 Jts.

Formations	Top
Cameo	2544
Rollins	2814
Cozzette	3030
Corcoran	3230
Sego	3384
Mancos	3514
Frontier	6593
Dakota	7520
Morrison	7748

LARAMIE ENERGY

Proposed Plug and Abandonment



Well Name HSC 1-21
API 05-077-08456
Surface Location SWSW S21, T9S, R97W
GPS Coordinates 39.254081 -108.229318
Bottom Hole Loc
Field Shire Gulch #77450
County, State Mesa, CO # 077
Spud Date 3/8/1982
Completion Date 6/8/1982 10/16/1992
Diagram Date 6/7/2019
KB Elevation 5671
KB 15
GL Elevation 5656

Fed Lease:

7" x 9 5/8" = 33.6 bbl
4 1/2" x 7" = 50.77 bbl
4 1/2" 11.6# = 64.4 bbl
9 5/8" 36# = 12.93 bbl

Hole	24"
Conductor	20" .25" wall @ 40'
Cement	Surface

Surface Hole	13 3/4" @ 400'
Casing	9 5/8" 36 DW K55 to 400'
TOC	Surface

Intermediates	8 3/4" @ 4090'
Casing	7" 23.0# K55 STC @ 4090
Cement	Stage 1
TOC	2770' SQZ Job 2220'

Production	6 1/4" @ 7850'
Liner	4 1/2" 11.6 K55 LTC @ 7850
Tie-back	4 1/2" 11.6 K55 LTC to surface
Hanger	3850'
Cement	Stage 1
TOC	4378 Tie-back 2678 * Tie-back TOC inside 4 1/2" x 7" Annulus

Perforations	3030-3292
	7592-7744

Tubing	2-3/8" 4.7# L80 @ 7566', 244 lbs.
--------	-----------------------------------

Formations	Top
Cameo	2544
Rollins	2814
Cozzette	3030
Corcoran	3230
Sego	3384
Mancoea	3514
Frontier	6593
Dakota	7520
Morrison	7748