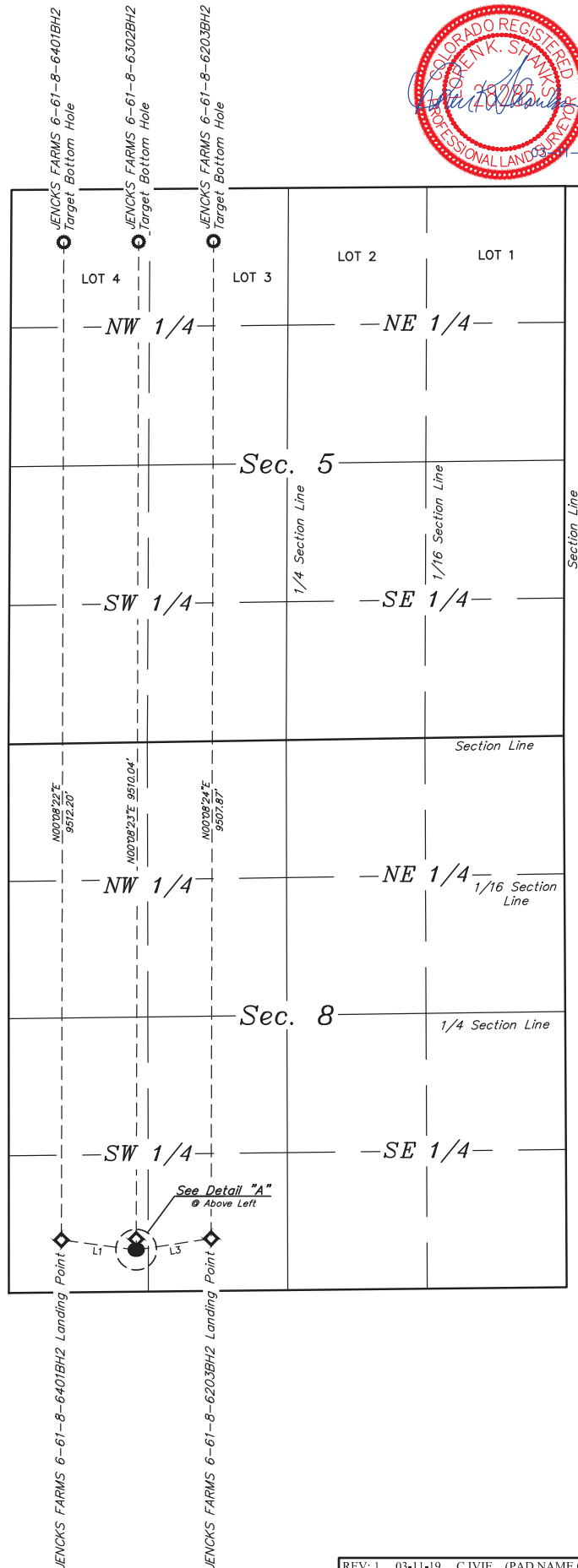
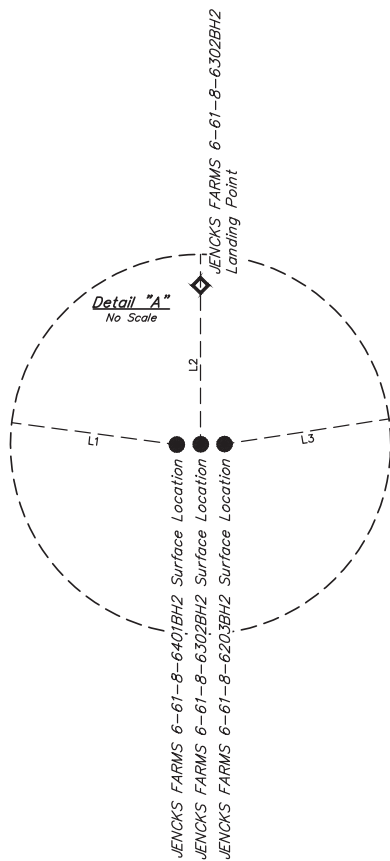




T7N
T6N



LEGEND:

- = PROPOSED WELLHEAD.
- ◆ = LANDING POINT.
- = TARGET BOTTOM HOLE.

NOTES:

REV: 1 03-11-19 C.IVIE (PAD NAME CHANGE)

HIGHPOINT OPERATING CORPORATION

JENCKS FARMS 6-61-8 5 SWSW PAD
SW 1/4 SW 1/4, SECTION 8, T6N, R61W, 6th P.M.
WELD COUNTY, COLORADO



UELS, LLC
Corporate Office * 85 South 200 East
Vernal, UT 84078 * (435) 789-1017

SURVEYED BY	CHAD MEIERS, C.M.	03-14-14	SCALE
DRAWN BY	C.C.	02-02-19	1" = 1000'
MULTI-WELL PLAN		FIGURE #5A	