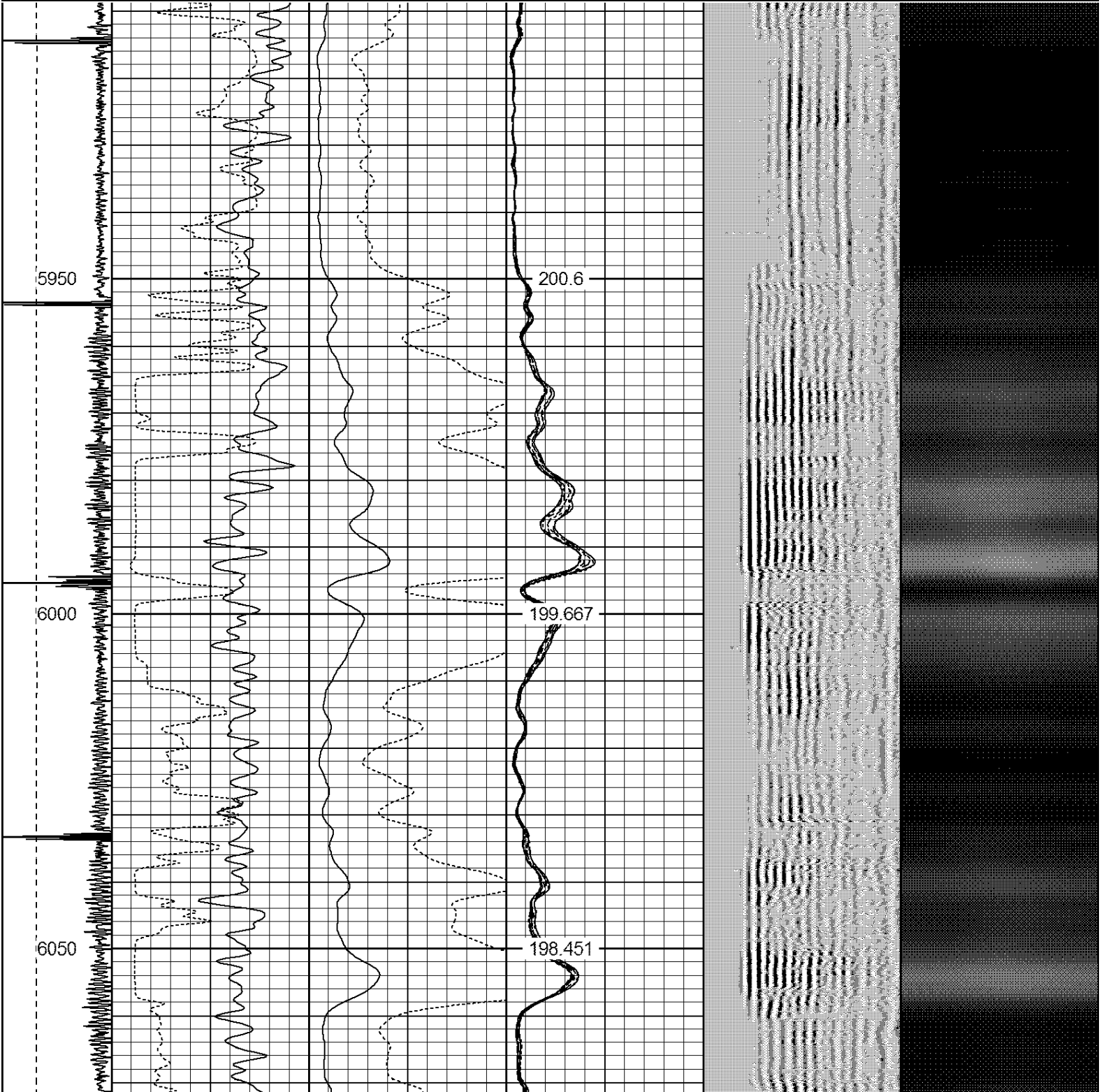


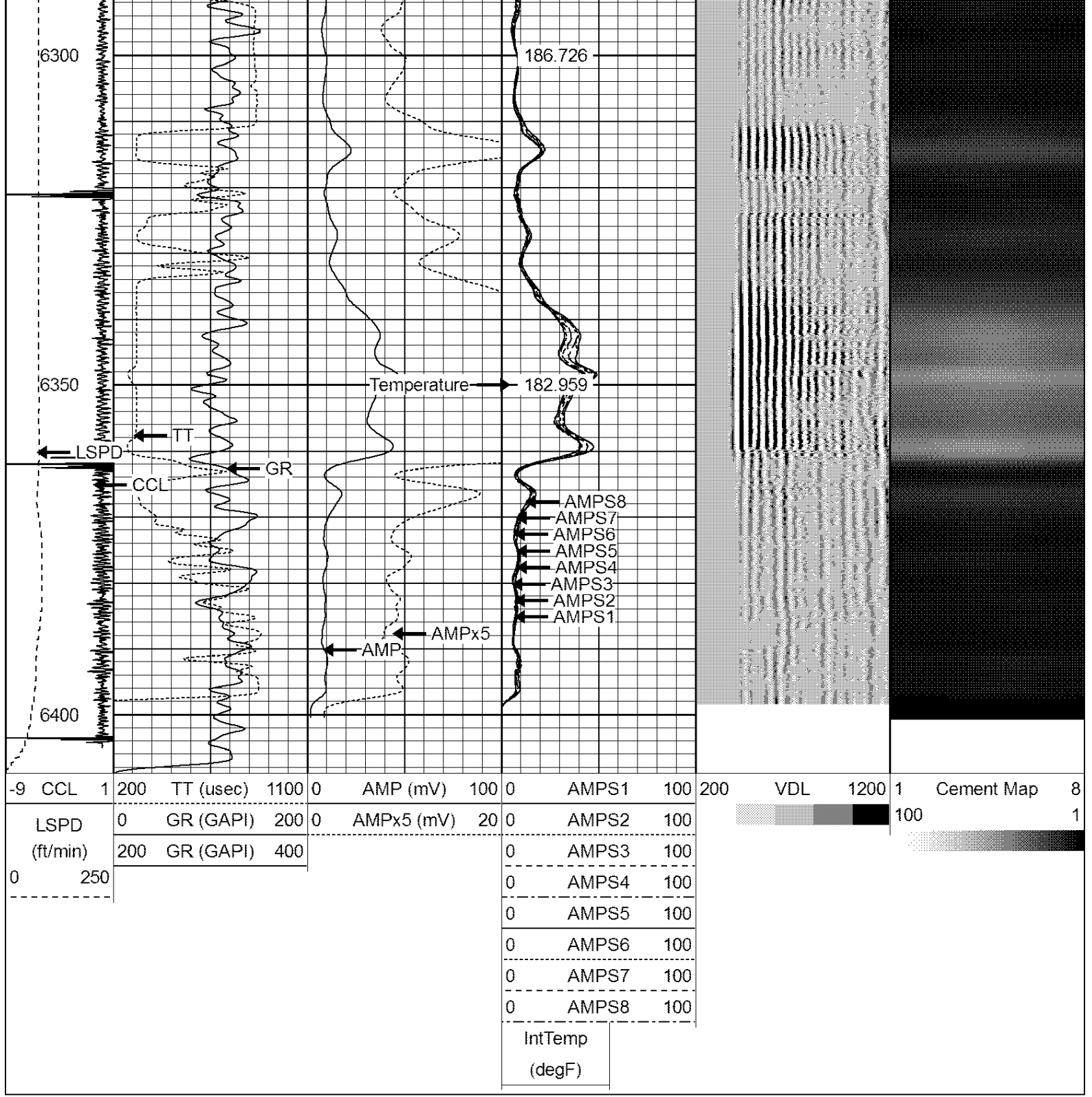
Dataset: guttersen state d16-15x.db: field/well/run1/pass2  
 Total Length: 17.13 ft  
 Total Weight: 165.00 lb  
 O.D.: 2.75 in

Database File: guttersen state d16-15x.db  
 Dataset Pathname: pass2  
 Presentation Format: ips\_rbt

-9	CCL	1	200	TT (usec)	1100	0	AMP (mV)	100	0	AMPS1	100	200	VDL	1200	1	Cement Map	8
	LSPD		0	GR (GAPI)	200	0	AMPx5 (mV)	20	0	AMPS2	100				100		1
	(ft/min)		200	GR (GAPI)	400					0	AMPS3	100					
0		250								0	AMPS4	100					
										0	AMPS5	100					
										0	AMPS6	100					
										0	AMPS7	100					
										0	AMPS8	100					
											IntTemp						
											(degF)						







Calibration Report

Database File: guttersen state d16-15x.db  
 Dataset Pathname: pass2  
 Dataset Creation: Fri Feb 01 16:15:47 2019 by Log SCH 120126

Gamma Ray Calibration Report

Serial Number: 275  
 Tool Model: Probe  
 Performed: Tue Sep 23 07:13:12 2014

Calibrator Value: 100.0 GAPI

Background Reading: 35.0 cps  
 Calibrator Reading: 160.0 cps

Sensitivity:

1.0000

GAPI/cps

## Compensated Neutron Calibration Report

Serial Number:

275

Tool Model:

Probe\_B

## CALIBRATION

Wed Jul 30 08:47:19 2008

Detector	Readings	Target	Normalization
Short Space	5001.20 cps	0.00 cps	1.0000
Long Space	1029.31 cps	0.00 cps	1.0000

## PRE-SURVEY VERIFICATION

	Detector	Readings	Measured	Target
1)	Short Space	cps		
	Long Space	cps	pu	pu
2)	Short Space	cps		
	Long Space	cps	pu	
3)	Short Space	cps		
	Long Space	cps	pu	

## POST-SURVEY VERIFICATION

	Detector	Readings	Measured	Target
1)	Short Space	cps		
	Long Space	cps	pu	pu
2)	Short Space	cps		
	Long Space	cps	pu	pu
3)	Short Space	cps		
	Long Space	cps	pu	pu

## Segmented Cement Bond Log Calibration Report

Serial Number:

Base

Tool Model:

Probe

Calibration Casing Diameter:

4.500

in

Calibration Depth:

-0.008

ft

Master Calibration, performed Fri Feb 01 15:36:47 2019:

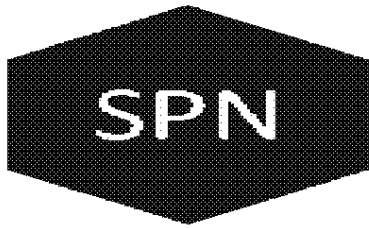
	Raw (v)		Calibrated (mv)		Results	
	Zero	Cal	Zero	Cal	Gain	Offset
3'	0.004	1.508	2.000	81.196	52.668	1.783
CAL	0.004	1.502				
5'	0.004	1.515	2.000	81.196	52.389	1.809
SUM						
S1	0.004	1.499	0.500	81.196	53.964	0.310
S2	0.004	1.473	0.500	81.196	54.921	0.283
S3	0.004	1.465	0.500	81.196	55.241	0.295
S4	0.004	1.501	0.500	81.196	53.896	0.284
S5	0.004	1.517	0.500	81.196	53.314	0.300
S6	0.004	1.545	0.500	81.196	52.352	0.306
S7	0.004	1.570	0.500	81.196	51.526	0.298
S8	0.004	1.535	0.500	81.196	52.681	0.306

Internal Reference Calibration, performed Tue Jun 05 07:53:42 2012:

	Raw (v)		Calibrated (v)		Results	
	Zero	Cal	Zero	Cal	Gain	Offset
CAL	0.000	0.000	0.004	1.502	1.000	0.000

Air Zero Calibration, performed Fri Feb 01 15:32:10 2019:

	Raw (v)		Calibrated (v)		Results	
	Zero		Zero		Offset	
3'	0.000		0.000		0.000	
5'	0.000		0.000		0.000	
SUM						
S1	0.000		0.000		0.000	
S2	0.000		0.000		0.000	
S3	0.000		0.000		0.000	
S4	0.000		0.000		0.000	
S5	0.000		0.000		0.000	
S6	0.000		0.000		0.000	
S7	0.000		0.000		0.000	
S8	0.000		0.000		0.000	



**Well Services**  
E-LINE

Company NOBLE ENERGY  
 Well GUTTERSON STATE D16-15X  
 Field WATTENBURG  
 County WELD  
 State CO