



Kerr-McGee Oil & Gas Onshore LP

A subsidiary of Anadarko Petroleum Corporation

1099 18th Street
Denver, CO 80202
720-929-6000

August 6, 2019

Jeff Robbins
Director, Colorado Oil and Gas Conservation Commission
Department of Natural Resources - The Chancery Building
1120 Lincoln Street, Suite 801
Denver, CO 80203

Re: **30 Day Certification Letter - 318A.e**
MAE J 8-12HZ (Doc No. 401905161)
Township 1 North, Range 68 West
Section 8: SESW
Unit Acreage: 480 Acres
Proposed Spacing Unit:
01N68W SEC 05: SWSE, SESW;
01N68W SEC 08: W2E2, E2W2;
01N68W SEC 17: NWNE, NENW
Weld County, Colorado

Dear Director Robbins:

Kerr-McGee Oil and Gas Onshore LP ("KMG") hereby certifies that a thirty (30) day notice has been given by certified mail to all mineral owners in the proposed wellbore spacing unit. We have not received any objections to such well location, proposed spacing unit, or additional producing formation. KMG hereby respectfully requests approval of this boundary well.

If there are any questions or issues regarding this permit, please contact Jayson VanShura at (720) 929-6814.

Sincerely,

Kerr-McGee Oil and Gas Onshore LP

A handwritten signature in black ink, appearing to read 'J. VanShura'.

Jayson VanShura
Regulatory Manager

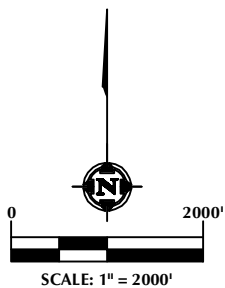
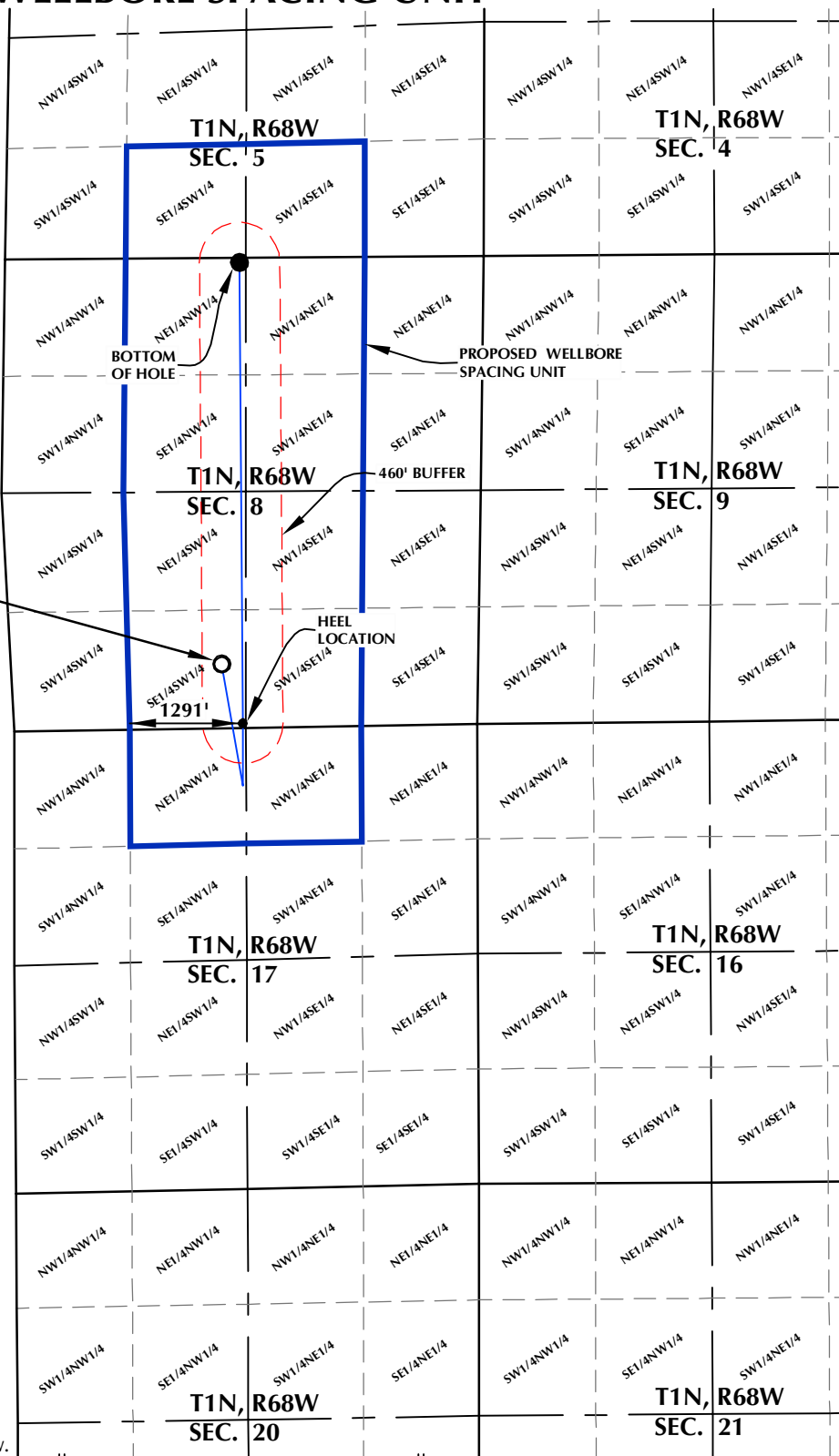
Enclosure

MAE J 8-12HZ WELLBORE SPACING UNIT

DISTANCE FROM COMPLETED
PORTION OF WELLBORE TO
NEAREST UNIT BOUNDARY= 1291'

SURFACE LOCATION: NAD 83
 GROUND ELEVATION= 5083.6'
 LATITUDE= 40.060258°
 LONGITUDE= -105.028603°
HEEL LOCATION: NAD 83
 LATITUDE= 40.058397°
 LONGITUDE= -105.027754°
 LATITUDE= 40°03'36.929"
 LONGITUDE= -105°01'42.970"
BOTTOM HOLE LOCATION: NAD 83
 LATITUDE= 40.072871°
 LONGITUDE= -105.027784°
 LATITUDE= 40°04'22.336"
 LONGITUDE= -105°01'40.022"

MAE J 8-12HZ
SURFACE LOCATION



NOTES:

1. DRAWING LATITUDE AND LONGITUDE COORDINATES ARE NAD 83 (2011)(EPOCH:2010).
2. ELEVATION BASED ON NAVD88 (GEOID12B).
3. BASIS OF BEARING DERIVED FROM COLORADO COORDINATE SYSTEM OF 1983 NORTH ZONE.
4. ALL MEASURED DISTANCES ARE GRID. COMBINED SCALE FACTOR: .99972107 CALCULATED FROM THE W. 1/4 CORNER OF SECTION 17, T1N, R68W.

WELL PAD - MAE J 14-8HZ

MAE J 8-12HZ
 WELLBORE SPACING UNIT
 731' FSL & 2411' FWL SESW (SURFACE)
 50' FSL & 2615' FWL SESW (HEEL)
 50' FNL & 2682' FWL NENW (BOTTOM)
 LOCATED IN SECTION 8
 T1N, R68W, 6TH P.M.
 WELD COUNTY, COLORADO

**Kerr-McGee Oil &
 Gas Onshore L.P.**
 1099 18th Street
 Denver, Colorado 80202



CONSULTING, LLC

SHERIDAN OFFICE
 1095 Saberton Avenue
 Sheridan, Wyoming 82801
 Phone 307-674-0609

LOVELAND OFFICE
 6706 North Franklin Avenue
 Loveland, Colorado 80538
 Phone 970-776-4331

DRAFTED BY: LMO	CHECKED BY: RKF
DATE DRAFTED: 11/20/18	DATE SURVEYED: 10/26/18
REVISED:	FILE NAME: 16-04