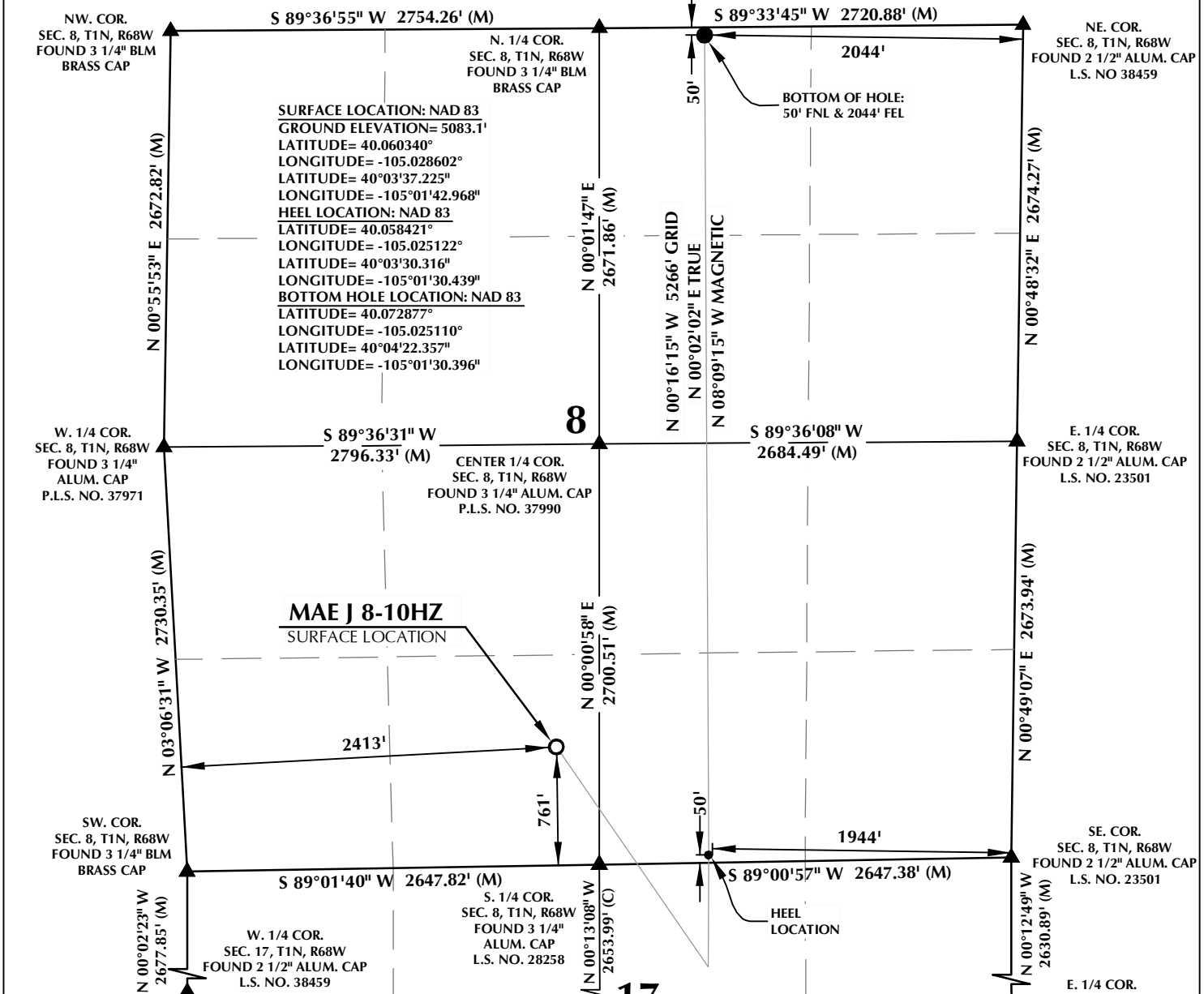


T1N, R68W



SURFACE LOCATION: NAD 83
 GROUND ELEVATION= 5083.1'
 LATITUDE= 40.060340°
 LONGITUDE= -105.028602°
 LATITUDE= 40°03'37.225"
 LONGITUDE= -105°01'42.968"
HEEL LOCATION: NAD 83
 LATITUDE= 40.058421°
 LONGITUDE= -105.025122°
 LATITUDE= 40°03'30.316"
 LONGITUDE= -105°01'30.439"
BOTTOM HOLE LOCATION: NAD 83
 LATITUDE= 40.072877°
 LONGITUDE= -105.025110°
 LATITUDE= 40°04'22.357"
 LONGITUDE= -105°01'30.396"

MAE J 8-10HZ
 SURFACE LOCATION

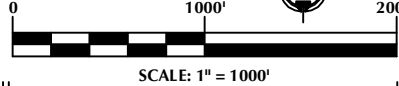
CERTIFICATE OF SURVEYOR:

THIS IS TO CERTIFY THAT THE ABOVE PLATS WERE PREPARED FROM FIELD NOTES OF ACTUAL SURVEYS MADE BY ME OR UNDER MY SUPERVISION AND THAT THE SAME ARE TRUE AND CORRECT TO THE BEST OF MY KNOWLEDGE AND BELIEF. THIS CERTIFICATE DOES NOT REPRESENT A LAND SURVEY PLAT OR IMPROVEMENT SURVEY PLAT AS DEFINED BY C.R.S. 38-5-102 AND CANNOT BE RELIED UPON TO DETERMINE OWNERSHIP.

Randall K. French
 RANDALL K. FRENCH
 PROFESSIONAL LAND SURVEYOR
 COLORADO REGISTRATION NUMBER 38512
 11/20/18

NOTICE: ACCORDING TO COLORADO STATE LAW YOU MUST EXERCISE A LEGAL ACTION BASED UPON ANY DEFECT IN THIS SURVEY WITHIN THREE YEARS AFTER YOU FIRST DISCOVER SUCH DEFECT. IN NO EVENT MAY ANY ACTION BE BASED UPON ANY DEFECT IN THIS SURVEY BE COMMENCED MORE THAN TEN YEARS FROM THE DATE ON THE CERTIFICATION SHOWN HEREON.

NOTE: MAGNETIC NORTH IS CURRENT AS OF 10/26/2018. MAGNETIC NORTH CHANGES WEST 0°06' PER YEAR.



NOTES:

- ▲ INDICATES SECTION CORNER.
- INDICATES CALCULATED CORNER.
- ELEVATION BASED ON NAVD88 (GEOID12B).
- BASIS OF BEARING DERIVED FROM COLORADO COORDINATE SYSTEM OF 1983 NORTH ZONE.
- ALL MEASURED DISTANCES ARE GRID.
- COMBINED SCALE FACTOR: .99972107 CALCULATED FROM THE W. 1/4 CORNER OF SECTION 17, T1N, R68W.
- OPERATOR: ROB WILSON / PDOP = 1.2.
- SEE ADDENDUM TO WELL LOCATION CERTIFICATE FOR EXISTING IMPROVEMENTS WITHIN 500' OF THE WELL PAD.
- WELL FOOTAGES ARE MEASURED AT RIGHT ANGLES TO THE SECTION LINES.
- THE BOTTOM OF HOLE BEARS N00°16'15"W, 5266' FROM THE HEEL LOCATION.

WELL PAD - MAE J 14-8HZ

MAE J 8-10HZ
 WELL LOCATION CERTIFICATE
 761' FSL & 2413' FSL SESW (SURFACE)
 50' FSL & 1944' FEL SWSW (HEEL)
 50' FNL & 2044' FEL NWNE (BOTTOM)
 LOCATED IN SECTION 8
 T1N, R68W, 6TH P.M.
 WELD COUNTY, COLORADO

Kerr-McGee Oil & Gas Onshore L.P.
 1099 18th Street
 Denver, Colorado 80202



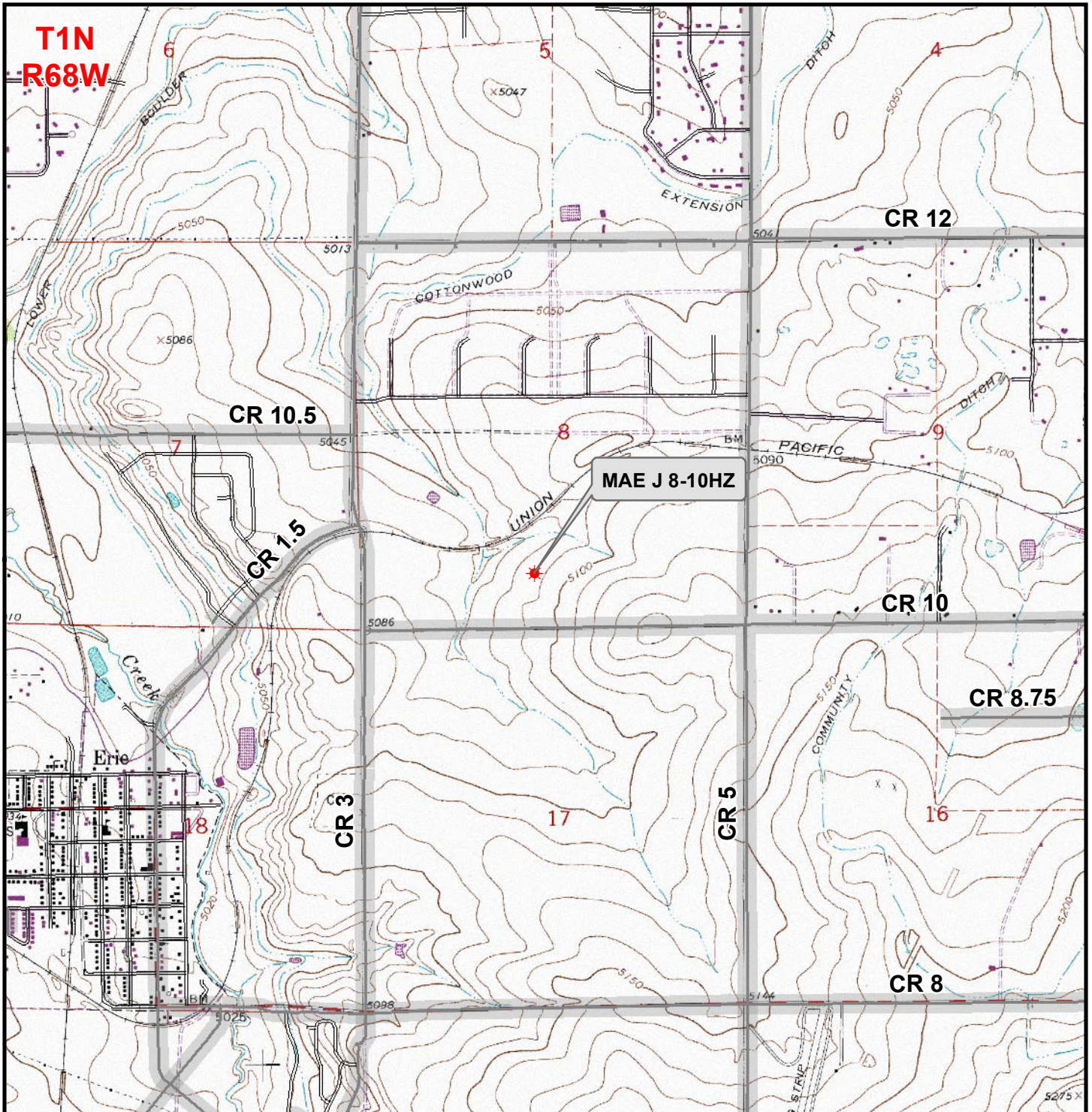
CONSULTING, LLC

SHERIDAN OFFICE
 1095 Saberton Avenue
 Sheridan, Wyoming 82801
 Phone 307-674-0609

LOVELAND OFFICE
 6706 North Franklin Avenue
 Loveland, Colorado 80538
 Phone 970-776-4331

DRAFTED BY:	LMO	CHECKED BY:	RKF
DATE DRAFTED:	11/20/18	DATE SURVEYED:	10/26/18
REVISED:		FILE NAME:	16-04

K:\ANADARKO\2016\2016_04_UPLAND_DAYBREAK_T1N_68W_8\GIS\Maps_ABC\Mae J 14-8HZ\MAE J 8-10HZ.mxd 11/9/2018 9:28:20 AM



Legend

- Well - Proposed
- Road - Primitive - Existing
- Road - County - Existing
- Road - Improved - Existing
- Road - Highway - Existing

WELL PAD - MAE J 14-8HZ
GENERAL LOCATION MAP
MAE J 8-10HZ
LOCATED IN SECTION 8
T1N, R68W, 6th P.M.
WELD COUNTY, COLORADO

Kerr-McGee Oil & Gas Onshore L.P.
 1099 18th Street
 Denver, Colorado 80202

	CONSULTING, LLC		
	SHERIDAN OFFICE 1095 Saberton Avenue Sheridan, Wyoming 82801 Phone 307-674-0609	LOVELAND OFFICE 6706 North Franklin Avenue Loveland, Colorado 80538 Phone 970-776-4331	
SCALE:	1" = 2,000ft	NAD83 CO-Nft	
DRAWN:	DP	DATE: 14 Nov 2018	
REVISED:		DATE:	