



Kerr-McGee Oil & Gas Onshore LP

A subsidiary of Anadarko Petroleum Corporation

1099 18th Street
Denver, CO 80202
720-929-6000

August 6, 2019

Jeff Robbins
Director, Colorado Oil and Gas Conservation Commission
Department of Natural Resources - The Chancery Building
1120 Lincoln Street, Suite 801
Denver, CO 80203

Re: **30 Day Certification Letter - 318A.e**
MAE J 8-3HZ (Doc No. 401905133)
Township 1 North, Range 68 West
Section 8: SESW
Unit Acreage: 480 Acres
Proposed Spacing Unit:
01N68W SEC 08: S2SE;
01N68W SEC 17: E2;
01N68W SEC 20: N2NE
Weld County, Colorado

Dear Director Robbins:

Kerr-McGee Oil and Gas Onshore LP ("KMG") hereby certifies that a thirty (30) day notice has been given by certified mail to all mineral owners in the proposed wellbore spacing unit. We have not received any objections to such well location, proposed spacing unit, or additional producing formation. KMG hereby respectfully requests approval of this boundary well.

If there are any questions or issues regarding this permit, please contact Jayson VanShura at (720) 929-6814.

Sincerely,

Kerr-McGee Oil and Gas Onshore LP

A handwritten signature in black ink, appearing to read 'J. VanShura'.

Jayson VanShura
Regulatory Manager

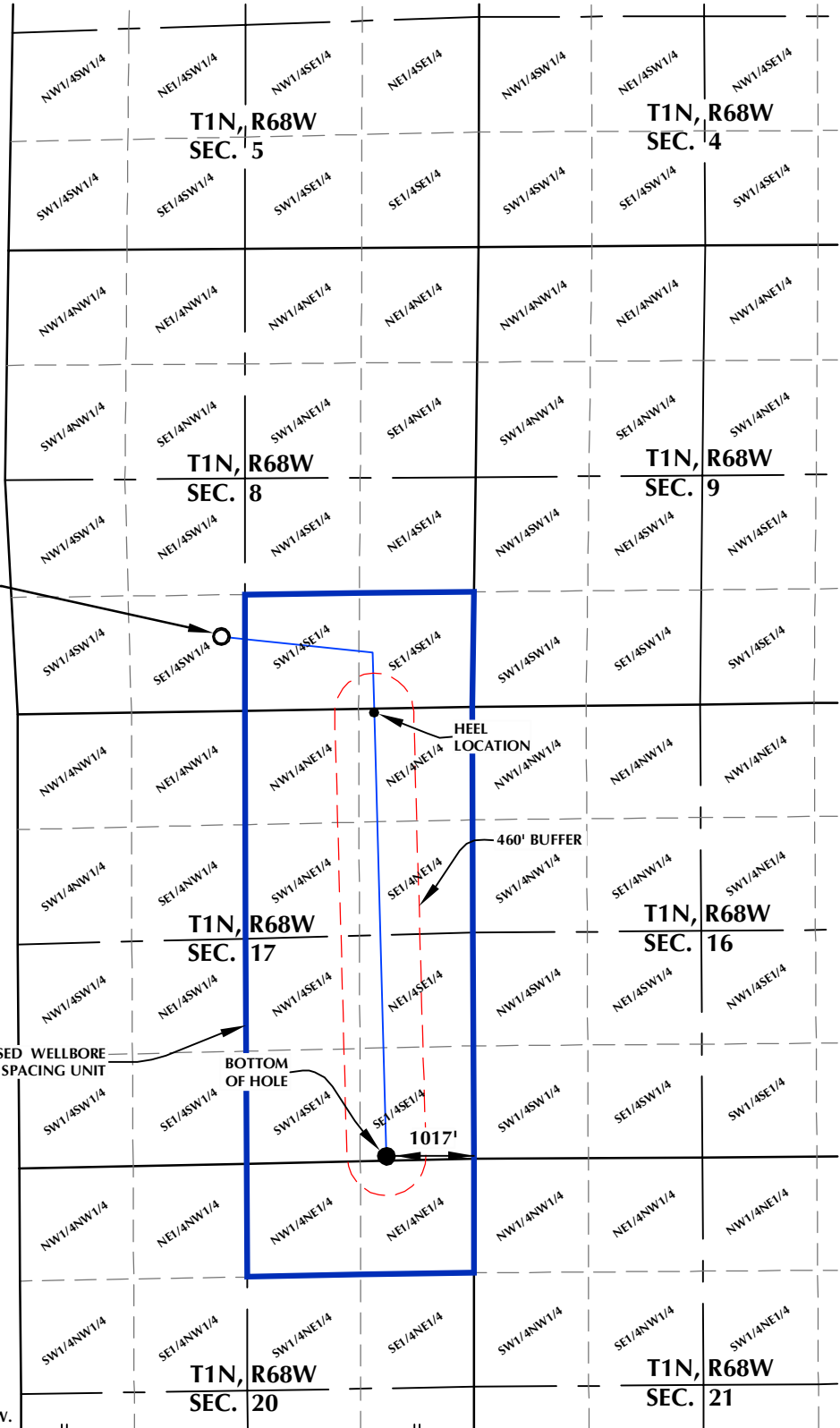
Enclosure

MAE J 8-3HZ

WELLBORE SPACING UNIT

DISTANCE FROM COMPLETED
PORTION OF WELLBORE TO
NEAREST UNIT BOUNDARY= 1017'

SURFACE LOCATION: NAD 83
GROUND ELEVATION= 5081.4'
LATITUDE= 40.060629°
LONGITUDE= -105.028600°
LATITUDE= 40°03'38.263"
LONGITUDE= -105°01'42.961"
HEEL LOCATION: NAD 83
LATITUDE= 40.058173°
LONGITUDE= -105.022258°
LATITUDE= 40°03'29.422"
LONGITUDE= -105°01'20.127"
BOTTOM HOLE LOCATION: NAD 83
LATITUDE= 40.043993°
LONGITUDE= -105.021841°
LATITUDE= 40°02'38.375"
LONGITUDE= -105°01'18.628"



MAE J 8-3HZ
SURFACE LOCATION

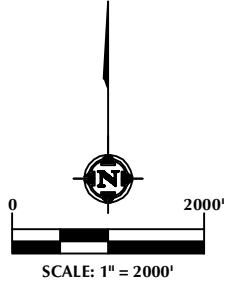
HEEL LOCATION

460' BUFFER

BOTTOM OF HOLE

1017'

PROPOSED WELLBORE
SPACING UNIT



NOTES:

1. DRAWING LATITUDE AND LONGITUDE COORDINATES ARE NAD 83 (2011)(EPOCH:2010).
2. ELEVATION BASED ON NAVD88 (GEOID12B).
3. BASIS OF BEARING DERIVED FROM COLORADO COORDINATE SYSTEM OF 1983 NORTH ZONE.
4. ALL MEASURED DISTANCES ARE GRID. COMBINED SCALE FACTOR: .99972107 CALCULATED FROM THE W. 1/4 CORNER OF SECTION 17, T1N, R68W.

WELL PAD - MAE J 14-8HZ

MAE J 8-3HZ
WELLBORE SPACING UNIT
866' FSL & 2418' FWL SESW (SURFACE)
LOCATED IN SECTION 8
50' FNL & 1142' FEL NENE (HEEL)
49' FSL & 1017' FEL SESE (BOTTOM)
LOCATED IN SECTION 17
T1N, R68W, 6TH P.M.
WELD COUNTY, COLORADO

**Kerr-McGee Oil &
Gas Onshore L.P.**
1099 18th Street
Denver, Colorado 80202



CONSULTING, LLC

SHERIDAN OFFICE
1095 Saberton Avenue
Sheridan, Wyoming 82801
Phone 307-674-0609

LOVELAND OFFICE
6706 North Franklin Avenue
Loveland, Colorado 80538
Phone 970-776-4331

DRAFTED BY:	LMO	CHECKED BY:	RKF
DATE DRAFTED:	11/20/18	DATE SURVEYED:	10/26/18
REVISED:		FILE NAME:	16-04