



# Kerr-McGee Oil & Gas Onshore LP

A subsidiary of Anadarko Petroleum Corporation

1099 18<sup>th</sup> Street  
Denver, CO 80202  
720-929-6000

August 6, 2019

Jeff Robbins  
Director, Colorado Oil and Gas Conservation Commission  
Department of Natural Resources - The Chancery Building  
1120 Lincoln Street, Suite 801  
Denver, CO 80203

Re: **30 Day Certification Letter - 318A.e**  
MAE J 8-2HZ (Doc No. 401905131)  
Township 1 North, Range 68 West  
Section 8: SESW  
Unit Acreage: 240 Acres  
Proposed Spacing Unit:  
01N68W SEC 08: SESE;  
01N68W SEC 17: E2E2;  
01N68W SEC 20: NENE  
Weld County, Colorado

Dear Director Robbins:

Kerr-McGee Oil and Gas Onshore LP ("KMG") hereby certifies that a thirty (30) day notice has been given by certified mail to all mineral owners in the proposed wellbore spacing unit. We have not received any objections to such well location, proposed spacing unit, or additional producing formation. KMG hereby respectfully requests approval of this boundary well.

If there are any questions or issues regarding this permit, please contact Jayson VanShura at (720) 929-6814.

Sincerely,

**Kerr-McGee Oil and Gas Onshore LP**

A handwritten signature in blue ink, appearing to read 'J. VanShura'.

Jayson VanShura  
Regulatory Manager

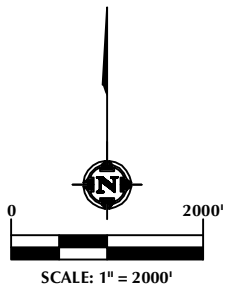
Enclosure

DISTANCE FROM COMPLETED  
PORTION OF WELLBORE TO  
NEAREST UNIT BOUNDARY= 644'

# MAE J 8-2HZ WELLBORE SPACING UNIT

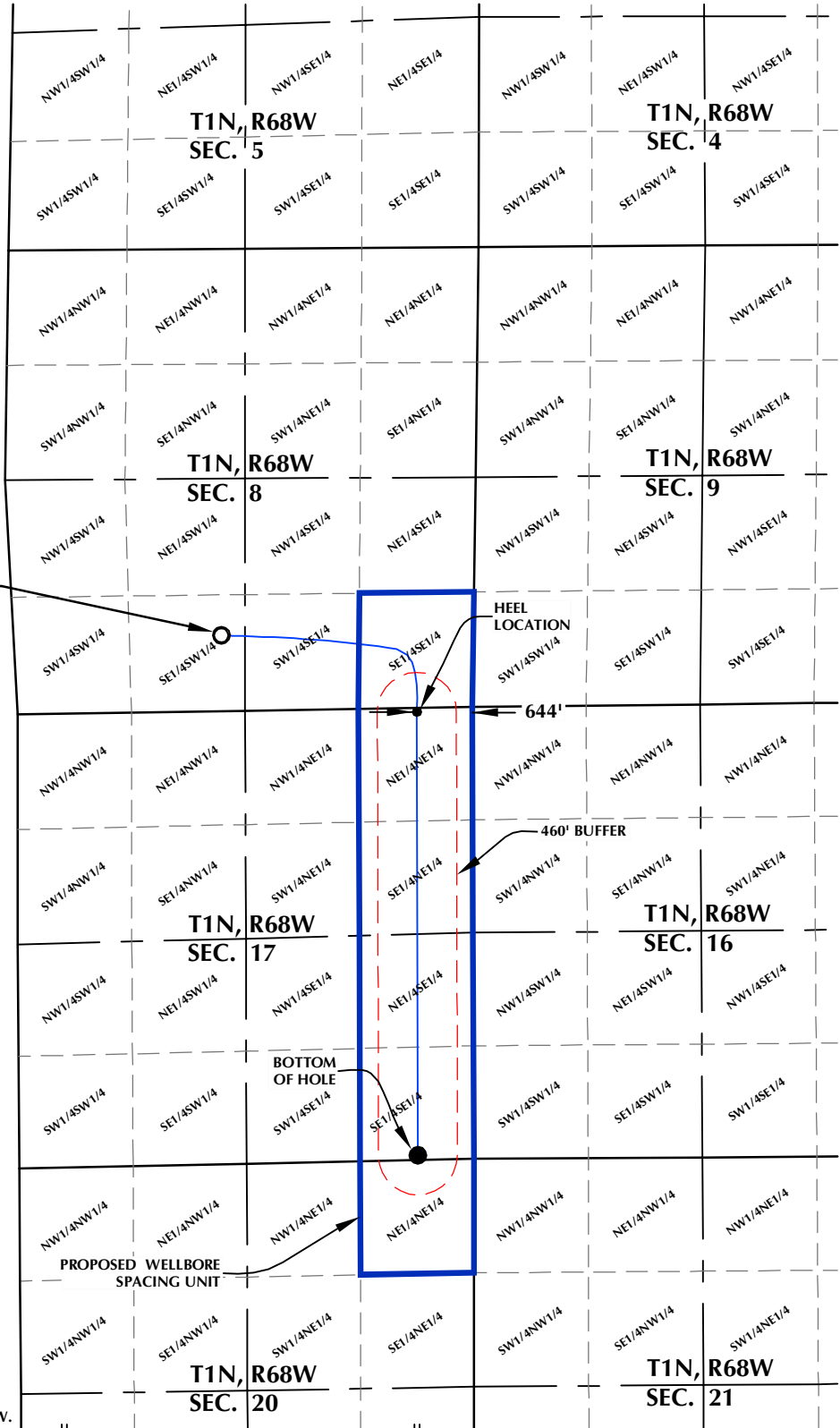
**SURFACE LOCATION: NAD 83**  
GROUND ELEVATION= 5081.6'  
LATITUDE= 40.060670°  
LONGITUDE= -105.028600°  
LATITUDE= 40°03'38.411"  
LONGITUDE= -105°01'42.960"  
**HEEL LOCATION: NAD 83**  
LATITUDE= 40.058189°  
LONGITUDE= -105.020478°  
LATITUDE= 40°03'29.480"  
LONGITUDE= -105°01'13.723"  
**BOTTOM HOLE LOCATION: NAD 83**  
LATITUDE= 40.044013°  
LONGITUDE= -105.020533°  
LATITUDE= 40°02'38.447"  
LONGITUDE= -105°01'13.919"

**MAE J 8-2HZ**  
SURFACE LOCATION



**NOTES:**

1. DRAWING LATITUDE AND LONGITUDE COORDINATES ARE NAD 83 (2011)(EPOCH:2010).
2. ELEVATION BASED ON NAVD88 (GEOID12B).
3. BASIS OF BEARING DERIVED FROM COLORADO COORDINATE SYSTEM OF 1983 NORTH ZONE.
4. ALL MEASURED DISTANCES ARE GRID. COMBINED SCALE FACTOR: .99972107 CALCULATED FROM THE W. 1/4 CORNER OF SECTION 17, T1N, R68W.



**WELL PAD - MAE J 14-8HZ**

MAE J 8-2HZ  
WELLBORE SPACING UNIT  
881' FSL & 2419' FWL SESW (SURFACE)  
LOCATED IN SECTION 8  
50' FNL & 644' FEL NENE (HEEL)  
50' FSL & 651' FEL SESE (BOTTOM)  
LOCATED IN SECTION 17  
T1N, R68W, 6TH P.M.  
WELD COUNTY, COLORADO

**Kerr-McGee Oil &  
Gas Onshore L.P.**  
1099 18th Street  
Denver, Colorado 80202



**CONSULTING, LLC**

**SHERIDAN OFFICE**  
1095 Saberton Avenue  
Sheridan, Wyoming 82801  
Phone 307-674-0609

**LOVELAND OFFICE**  
6706 North Franklin Avenue  
Loveland, Colorado 80538  
Phone 970-776-4331

DRAFTED BY:	LMO	CHECKED BY:	RKF
DATE DRAFTED:	11/20/18	DATE SURVEYED:	10/26/18
REVISED:		FILE NAME:	16-04