



GeoEnergy Monitoring Systems
167 Piedra Loop
Los Alamos, NM 87547

(505) 412-2841
srt@geoems.com

Neel Duncan
Integrated Petroleum Technologies, Inc.
1707 Cole Blvd, Suite 200
Golden, CO 80401

August 10, 2019

Dear Neel:

The NGL South Weld and Roy Tract SWD wells are located about 7 km east-northeast of the NGL C2A seismic station (**Figure 1**). Therefore, the C2A station should be able to monitor any seismicity that may be associated with the wells down to approximately M 1-1.5. There has been no seismicity in the vicinity of the C2A seismic station since it was installed on October 12, 2015 (**Figure 1**).

Figure 2 is the same as Figure 1 but using seismic locations from Yeck *et al.*, (2016) spanning the time period from 2014 to 2016. Again, there is no seismicity in the vicinity of the Roy or South Weld SWD wells.

Sincerely,

A handwritten signature in black ink that reads "Steven R. Taylor". The signature is written in a cursive style with a large, stylized 'S' and 'T'.

Steven R. Taylor
Chief Scientist

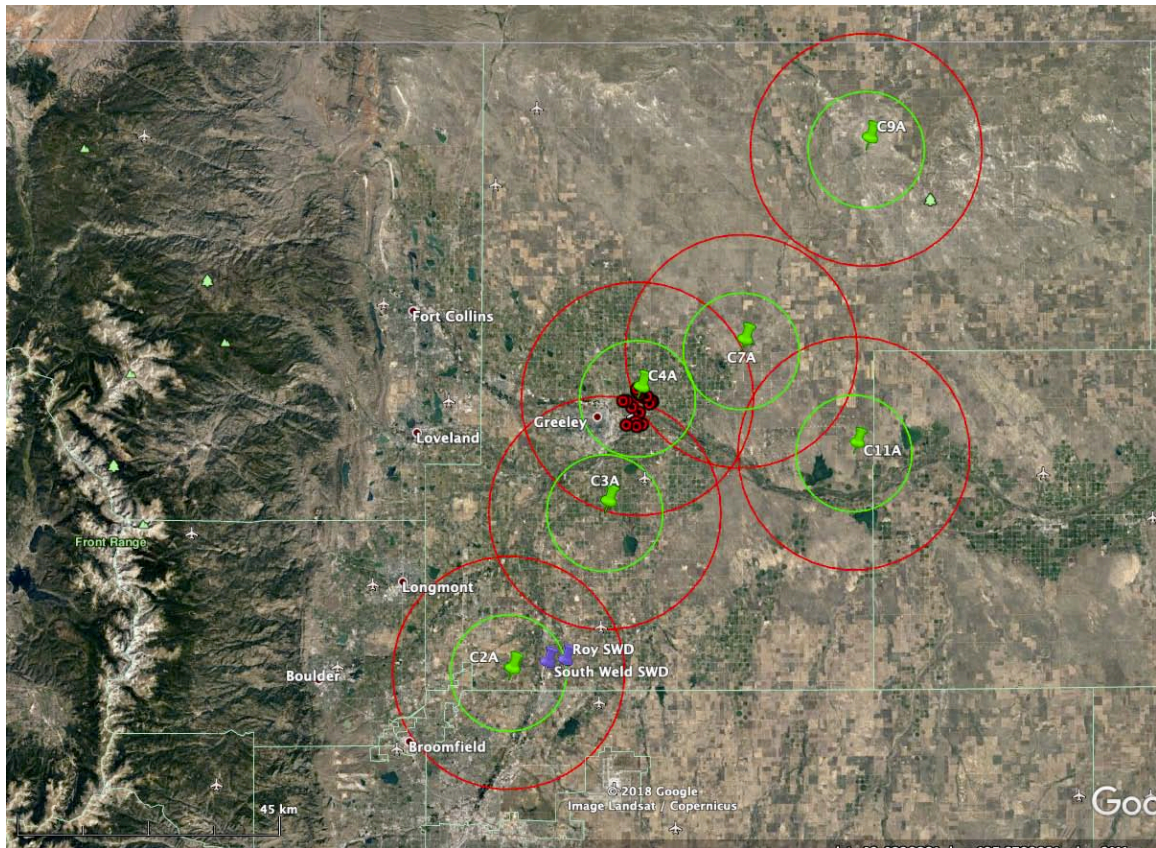


Figure 1. NGL seismic station locations (green pushpins) with estimated detection levels for M 1.0 (green circles) and M 1.5 (red circles). Seismic events having multiple station detections and GeoEMS location estimates from October 10, 2017 to date are shown as red circles. Roy Tract and South Weld SWD wells are indicated by purple pushpins.

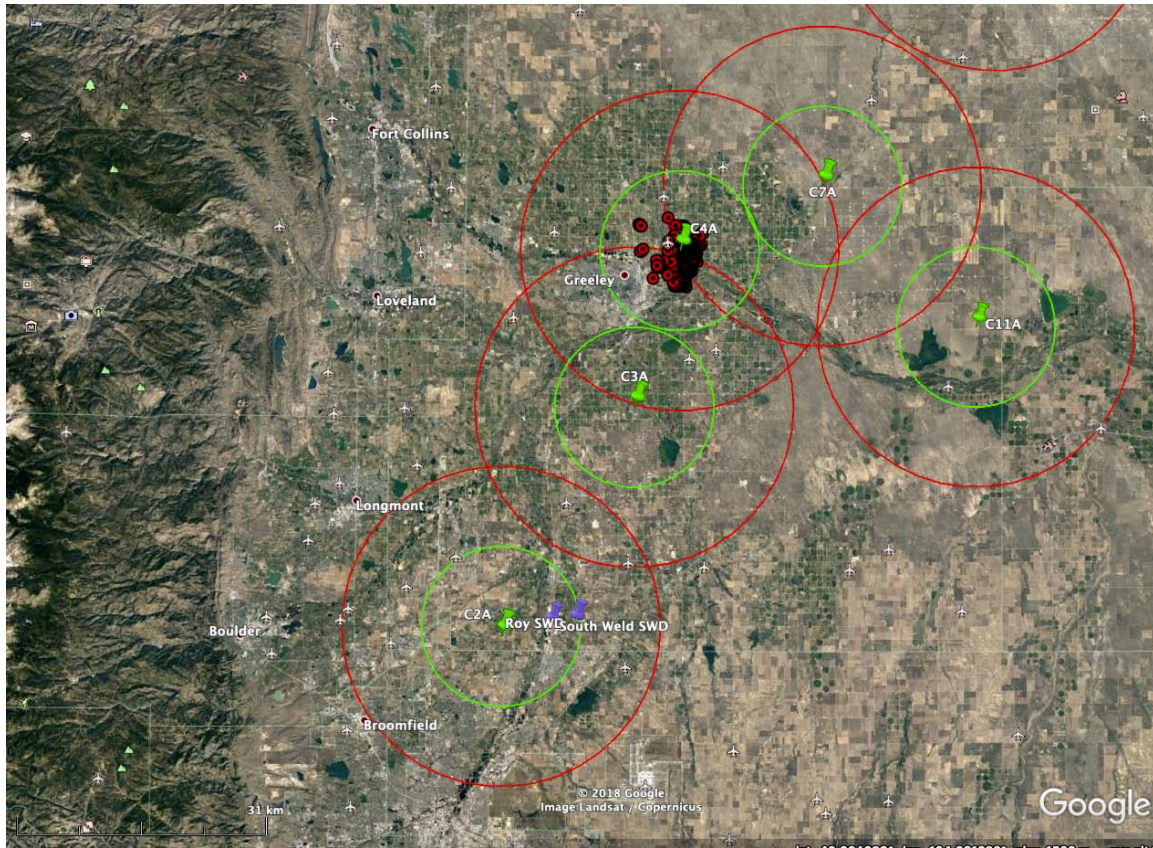


Figure 2. Same as Figure 1, but using seismic locations from Yeck *et al.*, (2016).

Reference

Yeck, W.L., A.F. Sheehan, H.M. Benz, M. Weingarten and J. Nakai (2016). Rapid response, monitoring, and mitigation of induced seismicity near Greeley, Colorado, *Seism. Res. Lett.*, doi: 10.1785/0220150275.