



Lat40°, Inc. 6250 W. 10th Street, Unit 2, Greeley, CO 970-515-5294

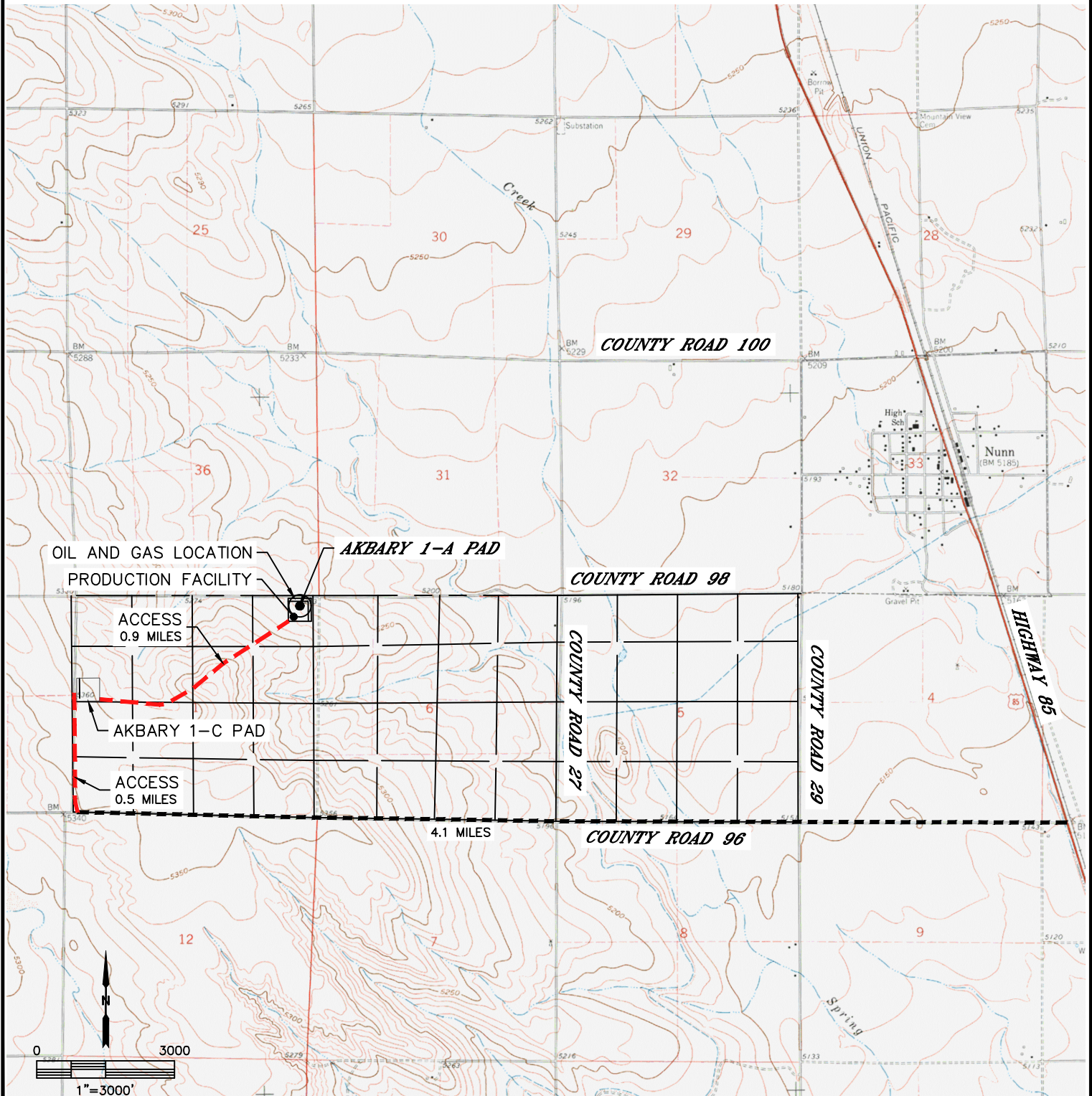
# ACCESS ROAD MAP

## AKBARY 1-A PAD

SECTION: 1  
TOWNSHIP: 8N  
RANGE: 67W  
6TH. P.M.  
WELD COUNTY, CO

### DRIVING DIRECTIONS TO AKBARY 1-A PAD

FROM THE INTERSECTION OF COUNTY ROAD 96 AND HIGHWAY 85 DRIVE WEST 4.1 MILES ON COUNTY ROAD 96 TO AN EXISTING ACCESS ON THE NORTH. TURN NORTH AND DRIVE 0.5 MILES ON THE EXISTING ACCESS, THEN EAST ON THE PROPOSED ACCESS 0.9 MILES TO THE PROPOSED DRILL PAD AND PRODUCTION FACILITY LOCATION.





Lat40°, Inc. 6250 W. 10th Street, Unit 2, Greeley, CO 970-515-5294

# ACCESS ROAD MAP

**AKBARY 1-A PAD**

SECTION: 1  
TOWNSHIP: 8N  
RANGE: 67W  
6TH. P.M.  
WELD COUNTY, CO

