



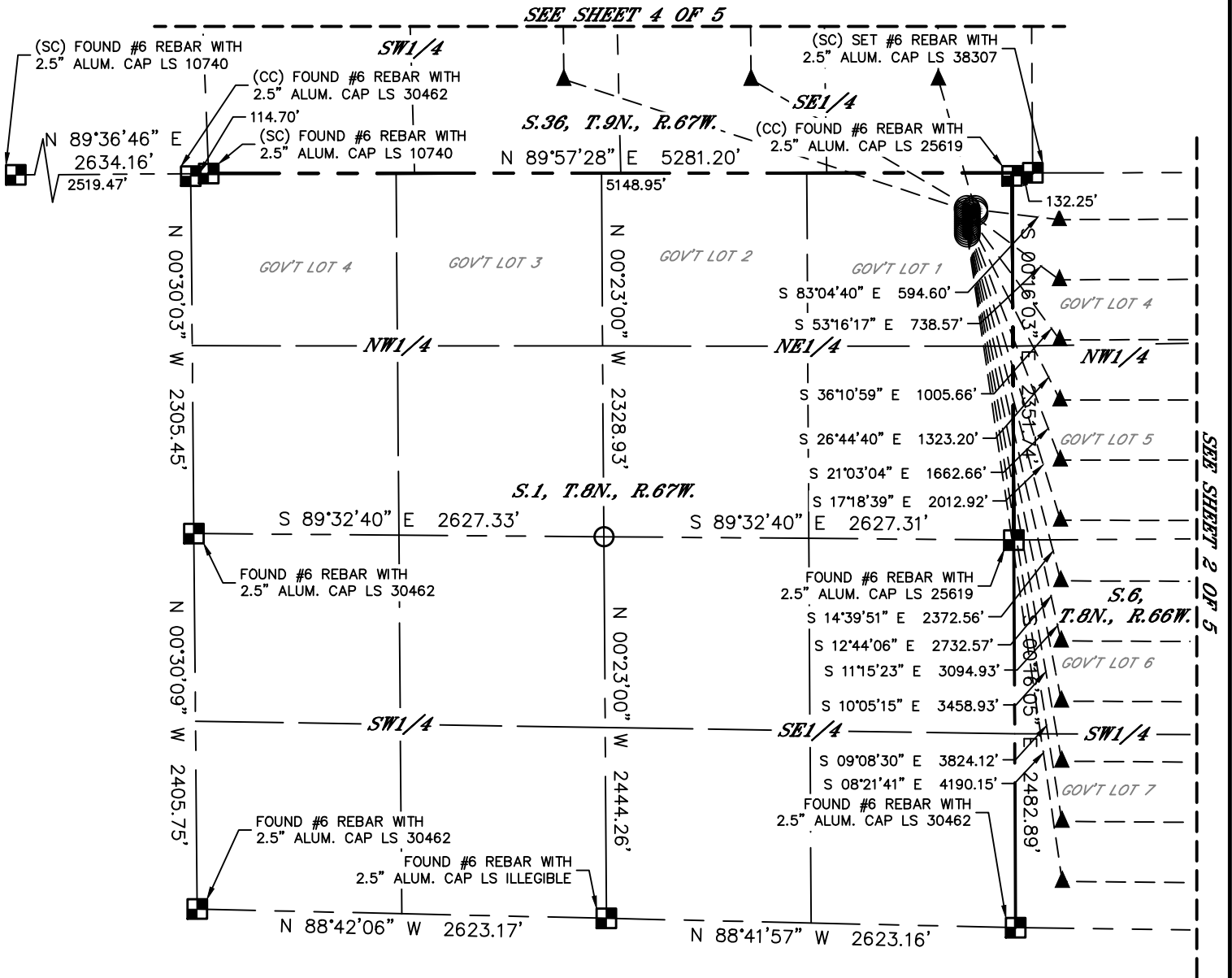
Lat40°, Inc. 6250 W. 10th Street, Unit 2, Greeley, CO 970-515-5294

MULTI-WELL PLAN

AKBARY 1-A PAD

THIS MAP DOES NOT REPRESENT A BOUNDARY SURVEY

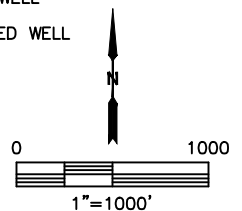
SECTION: 1
TOWNSHIP: 8N
RANGE: 67W
6TH. P.M.
WELD COUNTY, CO



#	WELL NAME	BHL FOOTAGE				BHL LAT °	BHL LONG °	BHL S-T-R
1	AKBARY 6-5-1H	300	FNL	300	FEL	40.69551	-104.79278	5-8-66
2	AKBARY 6-5-2H	697	FNL	300	FEL	40.69442	-104.79279	5-8-66
3	AKBARY 6-5-3H	1094	FNL	300	FEL	40.69334	-104.79280	5-8-66
4	AKBARY 6-5-4H	1491	FNL	300	FEL	40.69225	-104.79281	5-8-66
5	AKBARY 6-5-5H	1888	FNL	300	FEL	40.69116	-104.79282	5-8-66
6	AKBARY 6-5-6H	2285	FNL	300	FEL	40.69007	-104.79283	5-8-66
7	AKBARY 6-5-7H	2285	FSL	300	FEL	40.68897	-104.79284	5-8-66
8	AKBARY 6-5-8H	1888	FSL	300	FEL	40.68788	-104.79285	5-8-66
9	AKBARY 6-5-9H	1491	FSL	300	FEL	40.68679	-104.79286	5-8-66
10	AKBARY 6-5-10H	1094	FSL	300	FEL	40.68570	-104.79287	5-8-66
11	AKBARY 6-5-11H	697	FSL	300	FEL	40.68461	-104.79288	5-8-66
12	AKBARY 6-5-12H	300	FSL	300	FEL	40.68352	-104.79289	5-8-66
13	AKBARY 36-1H	600	FNL	2424	FWL	40.70939	-104.84010	36-9-67
14	AKBARY 36-2H	600	FNL	1800	FEL	40.70935	-104.83577	36-9-67
15	AKBARY 36-3H	600	FNL	600	FEL	40.70930	-104.83144	36-9-67

LEGEND

- = ALIQUOT MONUMENT AS DESCRIBED
- = CALCULATED POSITION
- = SURFACE HOLE LOCATION (SHL)
- ▲ = ENTRY POINT LOCATION (EP)
- _{BH} = BOTTOM HOLE LOCATION (BHL)
- ⊙ = EXISTING WELL
- ⊙ = ABANDONED WELL



SHEET 1 OF 5

DATE: 6/3/2019
PROJECT#: 2018061



Lat40°, Inc. 6250 W. 10th Street, Unit 2, Greeley, CO 970-515-5294

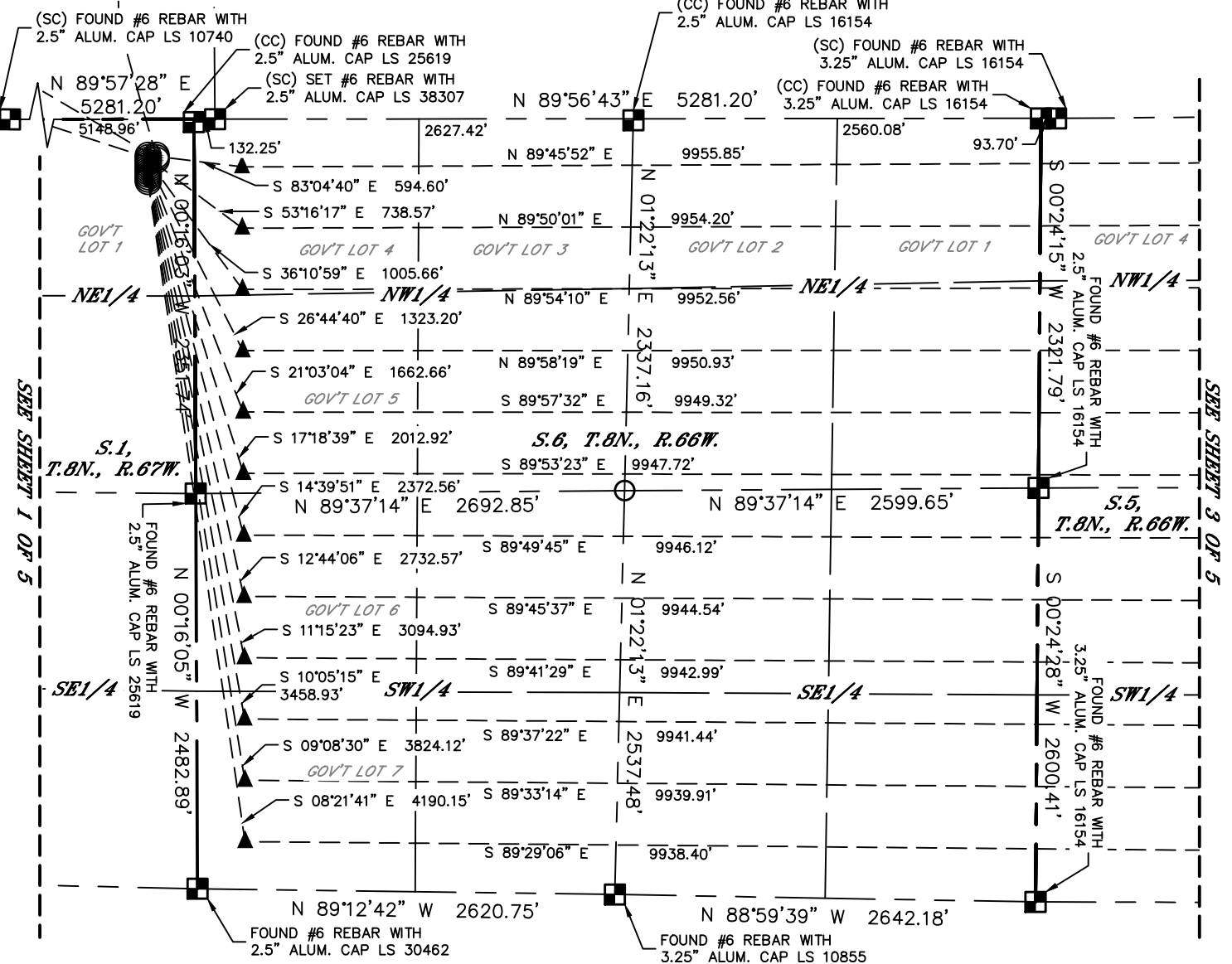
MULTI-WELL PLAN

AKBARY 1-A PAD

THIS MAP DOES NOT REPRESENT A BOUNDARY SURVEY

SECTION: 1
TOWNSHIP: 8N
RANGE: 67W
6TH. P.M.
WELD COUNTY, CO

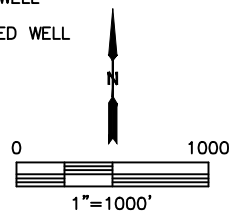
S.36, T.9N., R.67W.



#	WELL NAME	BHL FOOTAGE				BHL LAT°	BHL LONG°	BHL S-T-R
1	AKBARY 6-5-1H	300	FNL	300	FEL	40.69551	-104.79278	5-8-66
2	AKBARY 6-5-2H	697	FNL	300	FEL	40.69442	-104.79279	5-8-66
3	AKBARY 6-5-3H	1094	FNL	300	FEL	40.69334	-104.79280	5-8-66
4	AKBARY 6-5-4H	1491	FNL	300	FEL	40.69225	-104.79281	5-8-66
5	AKBARY 6-5-5H	1888	FNL	300	FEL	40.69116	-104.79282	5-8-66
6	AKBARY 6-5-6H	2285	FNL	300	FEL	40.69007	-104.79283	5-8-66
7	AKBARY 6-5-7H	2285	FSL	300	FEL	40.68897	-104.79284	5-8-66
8	AKBARY 6-5-8H	1888	FSL	300	FEL	40.68788	-104.79285	5-8-66
9	AKBARY 6-5-9H	1491	FSL	300	FEL	40.68679	-104.79286	5-8-66
10	AKBARY 6-5-10H	1094	FSL	300	FEL	40.68570	-104.79287	5-8-66
11	AKBARY 6-5-11H	697	FSL	300	FEL	40.68461	-104.79288	5-8-66
12	AKBARY 6-5-12H	300	FSL	300	FEL	40.68352	-104.79289	5-8-66
13	AKBARY 36-1H	600	FNL	2424	FWL	40.70939	-104.84010	36-9-67
14	AKBARY 36-2H	600	FNL	1800	FEL	40.70935	-104.83577	36-9-67
15	AKBARY 36-3H	600	FNL	600	FEL	40.70930	-104.83144	36-9-67

LEGEND

- = ALIQUOT MONUMENT AS DESCRIBED
- = CALCULATED POSITION
- = SURFACE HOLE LOCATION (SHL)
- ▲ = ENTRY POINT LOCATION (EP)
- _{BH} = BOTTOM HOLE LOCATION (BHL)
- ⊙ = EXISTING WELL
- ⊙ = ABANDONED WELL





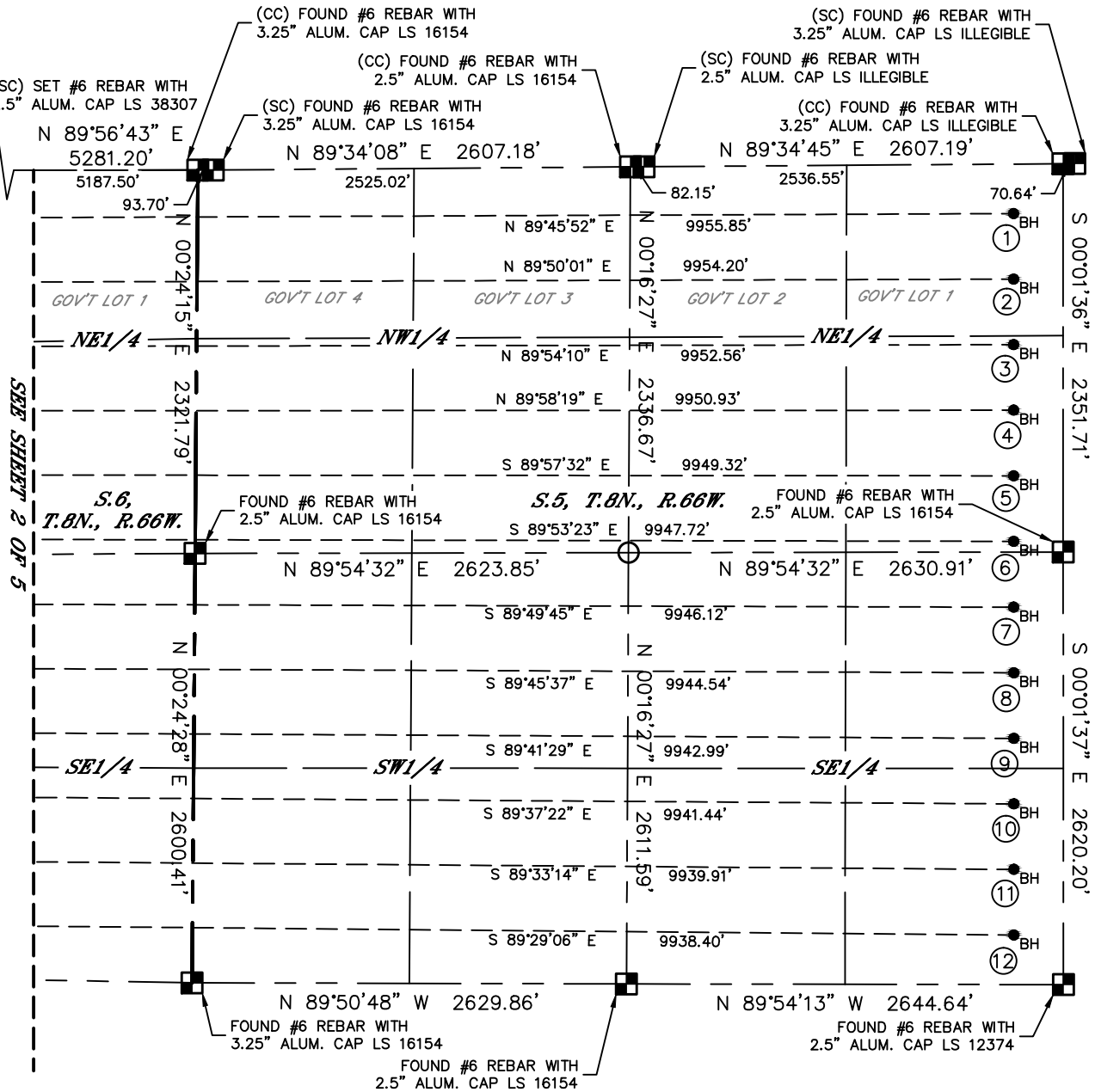
Lat40°, Inc. 6250 W. 10th Street, Unit 2, Greeley, CO 970-515-5294

MULTI-WELL PLAN

AKBARY 1-A PAD

SECTION: 1
TOWNSHIP: 8N
RANGE: 67W
6TH. P.M.
WELD COUNTY, CO

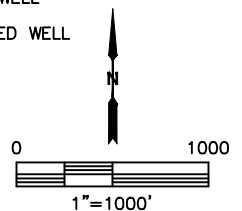
THIS MAP DOES NOT REPRESENT A BOUNDARY SURVEY



#	WELL NAME	BHL FOOTAGE			BHL LAT °	BHL LONG °	BHL S-T-R
1	AKBARY 6-5-1H	300	FNL	300	FEL	40.69551	-104.79278 5-8-66
2	AKBARY 6-5-2H	697	FNL	300	FEL	40.69442	-104.79279 5-8-66
3	AKBARY 6-5-3H	1094	FNL	300	FEL	40.69334	-104.79280 5-8-66
4	AKBARY 6-5-4H	1491	FNL	300	FEL	40.69225	-104.79281 5-8-66
5	AKBARY 6-5-5H	1888	FNL	300	FEL	40.69116	-104.79282 5-8-66
6	AKBARY 6-5-6H	2285	FNL	300	FEL	40.69007	-104.79283 5-8-66
7	AKBARY 6-5-7H	2285	FSL	300	FEL	40.68897	-104.79284 5-8-66
8	AKBARY 6-5-8H	1888	FSL	300	FEL	40.68788	-104.79285 5-8-66
9	AKBARY 6-5-9H	1491	FSL	300	FEL	40.68679	-104.79286 5-8-66
10	AKBARY 6-5-10H	1094	FSL	300	FEL	40.68570	-104.79287 5-8-66
11	AKBARY 6-5-11H	697	FSL	300	FEL	40.68461	-104.79288 5-8-66
12	AKBARY 6-5-12H	300	FSL	300	FEL	40.68352	-104.79289 5-8-66
13	AKBARY 36-1H	600	FNL	2424	FWL	40.70939	-104.84010 36-9-67
14	AKBARY 36-2H	600	FNL	1800	FEL	40.70935	-104.83577 36-9-67
15	AKBARY 36-3H	600	FNL	600	FEL	40.70930	-104.83144 36-9-67

LEGEND

- = ALIQUOT MONUMENT AS DESCRIBED
- = CALCULATED POSITION
- = SURFACE HOLE LOCATION (SHL)
- ▲ = ENTRY POINT LOCATION (EP)
- _{BH} = BOTTOM HOLE LOCATION (BHL)
- ⊙ = EXISTING WELL
- ⊙ = ABANDONED WELL



SHEET 3 OF 5

DATE: 6/3/2019
PROJECT#: 2018061



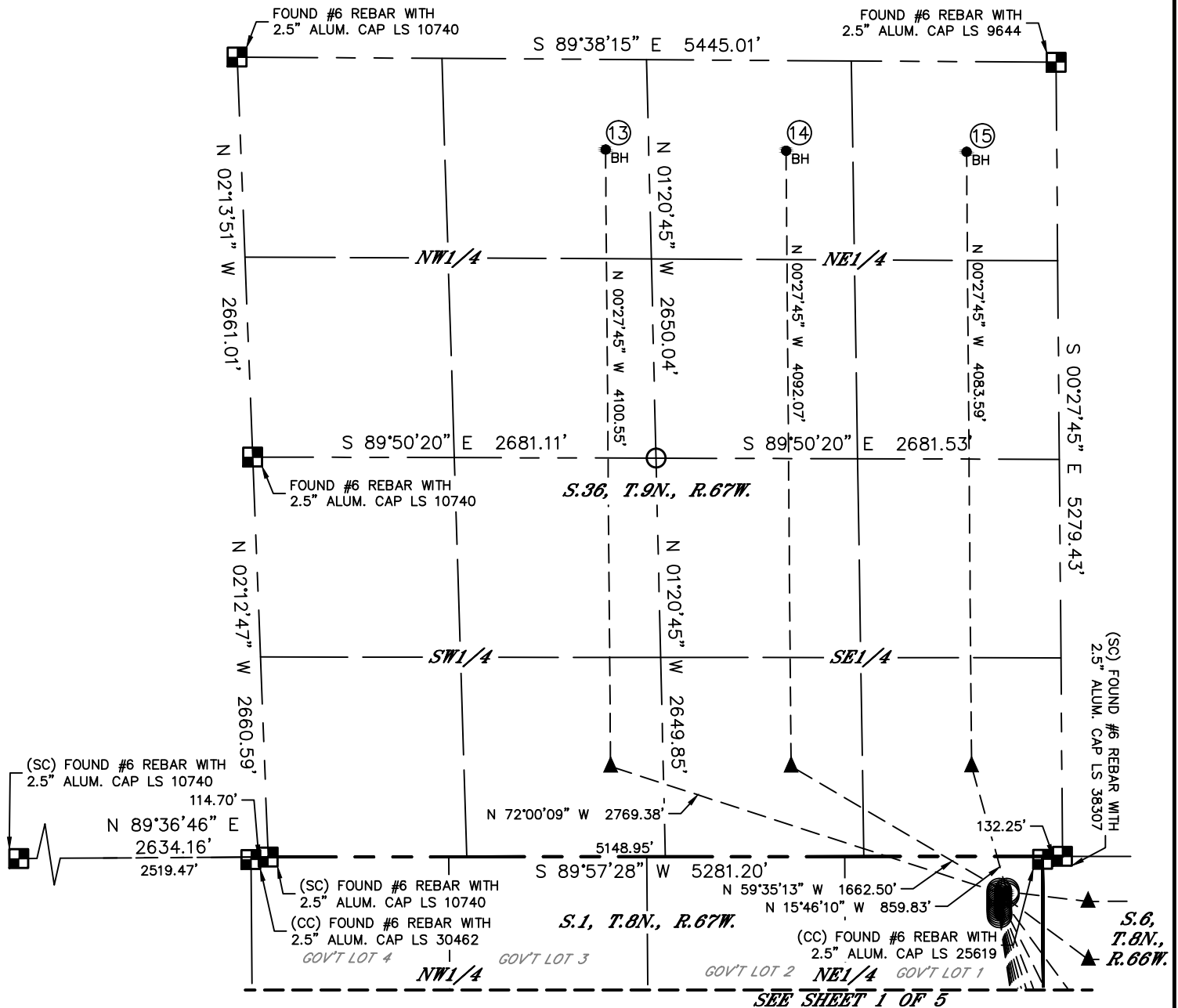
Lat40°, Inc. 6250 W. 10th Street, Unit 2, Greeley, CO 970-515-5294

MULTI-WELL PLAN

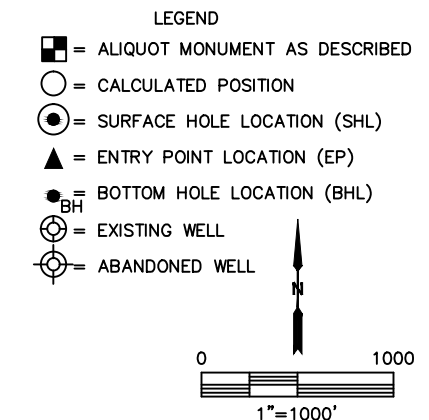
AKBARY 1-A PAD

THIS MAP DOES NOT REPRESENT A BOUNDARY SURVEY

SECTION: 1
TOWNSHIP: 8N
RANGE: 67W
6TH. P.M.
WELD COUNTY, CO



#	WELL NAME	BHL FOOTAGE				BHL LAT °	BHL LONG °	BHL S-T-R
1	AKBARY 6-5-1H	300	FNL	300	FEL	40.69551	-104.79278	5-8-66
2	AKBARY 6-5-2H	697	FNL	300	FEL	40.69442	-104.79279	5-8-66
3	AKBARY 6-5-3H	1094	FNL	300	FEL	40.69334	-104.79280	5-8-66
4	AKBARY 6-5-4H	1491	FNL	300	FEL	40.69225	-104.79281	5-8-66
5	AKBARY 6-5-5H	1888	FNL	300	FEL	40.69116	-104.79282	5-8-66
6	AKBARY 6-5-6H	2285	FNL	300	FEL	40.69007	-104.79283	5-8-66
7	AKBARY 6-5-7H	2285	FSL	300	FEL	40.68897	-104.79284	5-8-66
8	AKBARY 6-5-8H	1888	FSL	300	FEL	40.68788	-104.79285	5-8-66
9	AKBARY 6-5-9H	1491	FSL	300	FEL	40.68679	-104.79286	5-8-66
10	AKBARY 6-5-10H	1094	FSL	300	FEL	40.68570	-104.79287	5-8-66
11	AKBARY 6-5-11H	697	FSL	300	FEL	40.68461	-104.79288	5-8-66
12	AKBARY 6-5-12H	300	FSL	300	FEL	40.68352	-104.79289	5-8-66
13	AKBARY 36-1H	600	FNL	2424	FWL	40.70939	-104.84010	36-9-67
14	AKBARY 36-2H	600	FNL	1800	FEL	40.70935	-104.83577	36-9-67
15	AKBARY 36-3H	600	FNL	600	FEL	40.70930	-104.83144	36-9-67



SHEET 4 OF 5

DATE: 6/3/2019
PROJECT#: 2018061

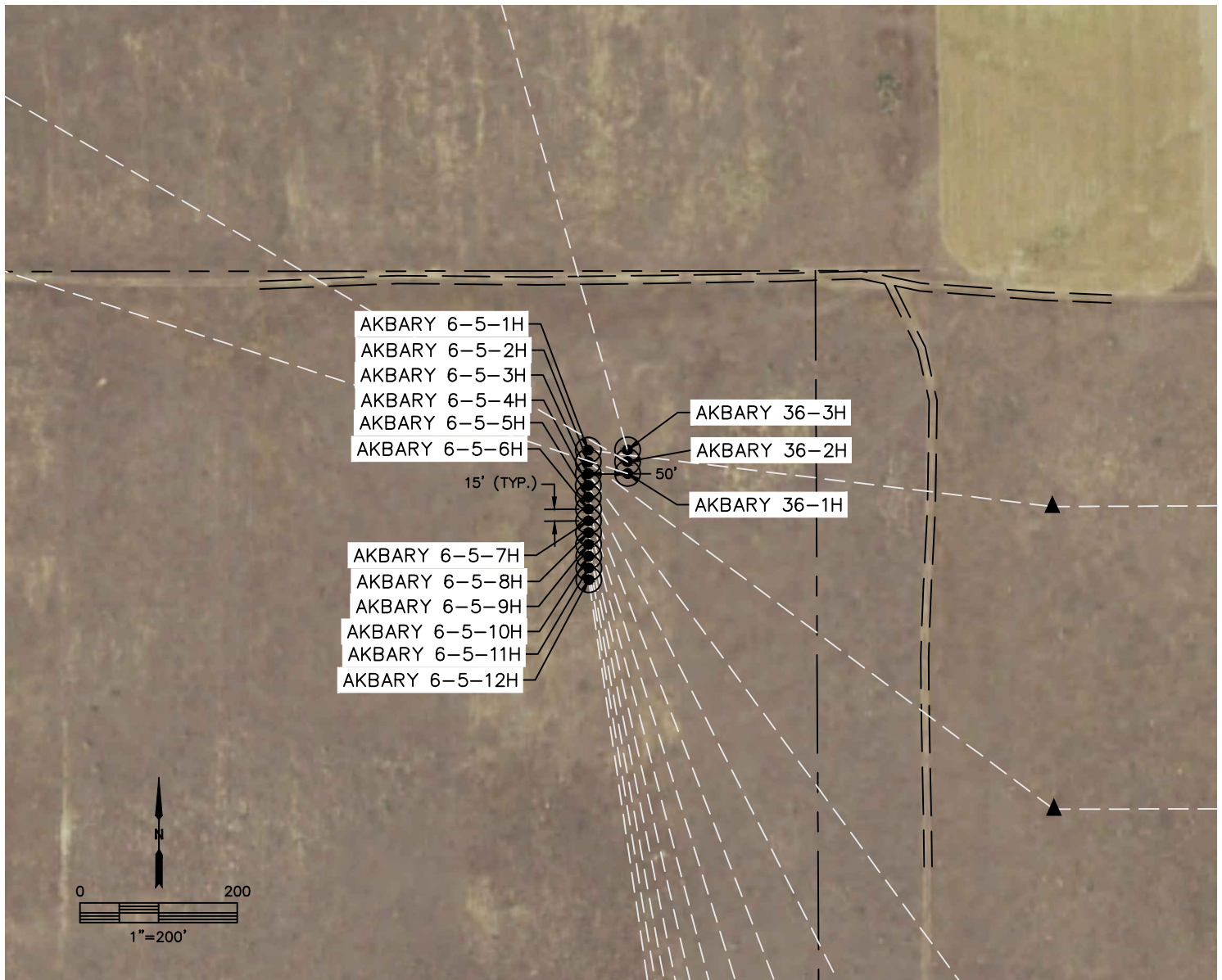


Lat40°, Inc. 6250 W. 10th Street, Unit 2, Greeley, CO 970-515-5294

MULTI-WELL PLAN

AKBARY 1-A PAD

SECTION: 1
TOWNSHIP: 8N
RANGE: 67W
6TH. P.M.
WELD COUNTY, CO



#	WELL NAME	SHL FOOTAGE				SHL LAT°	SHL LONG°	SHL PDOP	SHL ELEV (FT.)	SHL 1/4/1/4	SHL S-T-R
1	AKBARY 6-5-1H	228	FNL	290	FEL	40.69582	-104.83080	1.7	5270	NENE	1-8-67
2	AKBARY 6-5-2H	243	FNL	290	FEL	40.69578	-104.83080	1.7	5270	NENE	1-8-67
3	AKBARY 6-5-3H	258	FNL	290	FEL	40.69574	-104.83080	1.8	5271	NENE	1-8-67
4	AKBARY 6-5-4H	273	FNL	290	FEL	40.69570	-104.83080	1.8	5271	NENE	1-8-67
5	AKBARY 6-5-5H	288	FNL	290	FEL	40.69566	-104.83080	1.8	5271	NENE	1-8-67
6	AKBARY 6-5-6H	303	FNL	290	FEL	40.69562	-104.83080	1.8	5272	NENE	1-8-67
7	AKBARY 6-5-7H	318	FNL	290	FEL	40.69558	-104.83080	1.7	5272	NENE	1-8-67
8	AKBARY 6-5-8H	333	FNL	290	FEL	40.69553	-104.83080	1.7	5273	NENE	1-8-67
9	AKBARY 6-5-9H	348	FNL	290	FEL	40.69549	-104.83080	1.7	5273	NENE	1-8-67
10	AKBARY 6-5-10H	363	FNL	290	FEL	40.69545	-104.83080	1.7	5273	NENE	1-8-67
11	AKBARY 6-5-11H	378	FNL	290	FEL	40.69541	-104.83080	2.3	5274	NENE	1-8-67
12	AKBARY 6-5-12H	393	FNL	290	FEL	40.69537	-104.83080	2.3	5274	NENE	1-8-67
13	AKBARY 36-1H	258	FNL	240	FEL	40.69574	-104.83062	1.8	5270	NENE	1-8-67
14	AKBARY 36-2H	243	FNL	240	FEL	40.69578	-104.83062	1.8	5269	NENE	1-8-67
15	AKBARY 36-3H	228	FNL	240	FEL	40.69582	-104.83062	1.8	5269	NENE	1-8-67