



# OPERATIONS, MAINTENANCE AND EMERGENCIES MANUAL

## HYDROSTATIC TEST SECTION DATA SHEET

Test Section Number	Line Name <b>Oscar Phase 1 8"</b>	Drawing No.	Date of Test <b>4-27-14</b>	Page <b>of</b>
Loc. Of Test Section Begin Stationing End Stationing	<b>0+00 / 3+24</b>	Class Loc.	Failure <input type="checkbox"/> Yes <input checked="" type="checkbox"/> No	
TEST REQUIREMENTS				
Design Pressure	Test Medium <b>Water</b>	Leak Test	Req. Min. Test Pressure <b>980 PSI</b>	Press. Trans. DW # 1
Design Factor	Stabilization <b>38 Hrs</b>	Strength Test <b>8.5 Hrs</b>	Allow. Max Test Press. <b>1,000 PSI</b>	Valve/Flange Material <b>300# series</b>
Pipe/Ftg. (OD, wt, Grd, Mfg) <b>8.625, .322, X52, Seach</b>				

PRESSURE-TEMPERATURE DATA											
Time//Ref.	DW Press.	Amb. Temp.	Time//Ref.	DW Press.	Amb. Temp.	Time//Ref.	DW Press.	Amb. Temp.	Time//Ref.	DW Press.	Amb. Temp.
8:05 AM	980	48	1:00	980	44						
8:15	980	48	1:15	980	43						
8:30	980	48	1:30	980	42						
8:45	980	47	1:45	980	43						
9:00	980	48	2:00	980	43						
9:15	980	47	2:15	980	44						
9:30	980	46	2:30	980	45						
9:45	980	45	2:45	980	46						
10:00	980	45	3:00	980	46						
10:15	980	44	3:15	980	47						
10:30	980	44	3:30	980	47						
10:45	980	43	3:45	980	46						
11:00	980	43	4:00	980	46						
11:15	980	43	4:15	980	48						
11:30	980	43	4:30	980	49						
11:45	980	44	4:45	980	49						
12:00 AM	980	44	4:50	DE-Pressure	49						
12:15	980	44									
12:30	980	44									
12:45	980	44									

Deadweight		Pressure		Temperature	
Gauge #1	Gauge #2	Recorder #1	Recorder #2	Recorder #1	Recorder #2
Station	<b>0+00</b>	<b>0+00</b>		<b>0+00</b>	
Manufacturer - Deadweight	<b>Refinery Supply</b>	<b>Barton</b>		<b>Barton</b>	
Serial Number	<b>6153</b>	<b>8740</b>		<b>8740</b>	
Date Calibrated	<b>3-4-14</b>	<b>4-9-14</b>		<b>4-9-14</b>	

ELEVATION - DOCUMENTED PRESSURE DATA							
Minimum Pressure		Maximum Pressure		Pressure DW #1		Pressure DW #2	
High Elev.	% SMYS	Low Elev.	% SMYS	Min.	Max.	Min.	Max.
Pressure							
Station							
Elevation							
Weather		Exposed Pipe		Feet		Percent	

CERTIFICATION (Use for Single Test Projects)

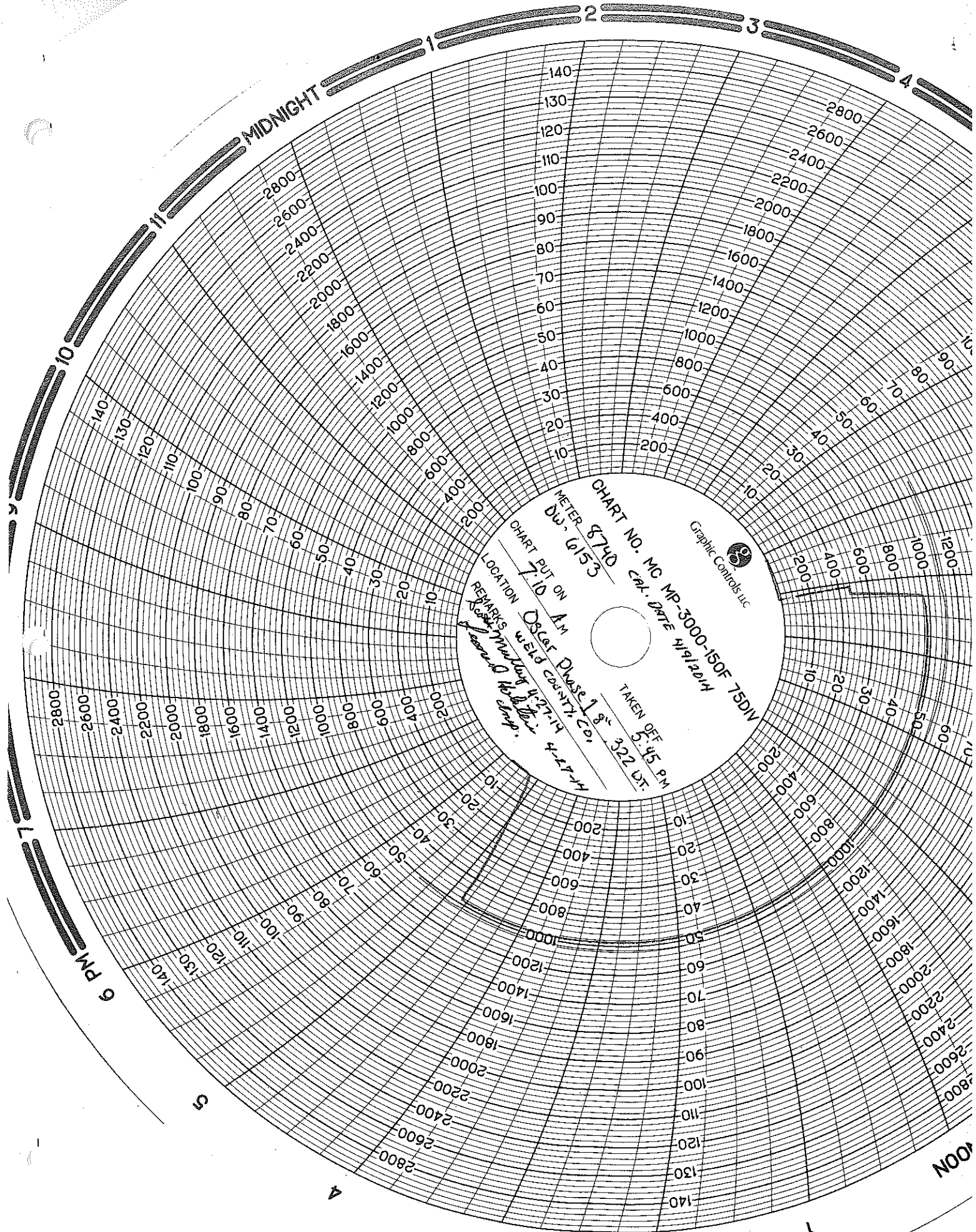
This Pipeline is qualified at \_\_\_\_\_ psig MAOP in a Class \_\_\_\_\_ Location per Title 49, DOT Part \_\_\_\_\_, Subpart \_\_\_\_\_

DOCUMENTS ATTACHED

☒ Pressure Charts ☒ Temperature Charts ☐ Test Section Data ☐ Test Log ☐ Plan & Profile ☐ Fluid Data ☐ Yield Data ☐ Failure Report

SIGNATURES

Test Technician	<b>Scott McKinley</b>	Test Technician Company	<b>Black Eagle</b>	Date	<b>4-28-14</b>
Company Representative	<b>Donald Holsten</b>	Title	<b>Chief</b>	Date	<b>4-28-14</b>

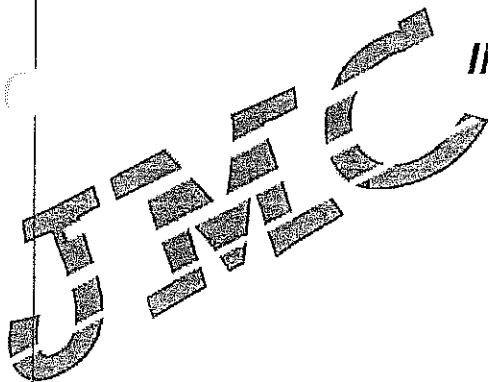


18501' 8" E 1

TEST STATION - 322 WT, API-54 X-56 ERW  
TEST STATION - HIGH POINT 0+50 HORIZONTAL ELEV. 4928.1

TEST STATION - LOW POINT 185+01 HORIZONTAL ELEV. 4827.1

TEST PRESS. MAX 980 PSI AT STATION 0+50 LACT. UNIT MAINLINE PUMP.  
TESTED ALL PIPING FROM 2" 300# FLANGE AT TAMPRA 8" 600# VALVE SERIES PIPING (FUTURE TEST)  
7 STA. 3+24 8" 600# FLANGE AT TAMPRA 8" 600# VALVE SERIES PIPING (FUTURE TEST)  
THIS TEST DID NOT INCLUDE LACT UNIT LOW PRESS. # 150 SERIES PIPING (FUTURE TEST)  
" " " " " METERING SKID TAMPRA NORTH (FUTURE TEST)



**INSTRUMENTS, INC.**

9829 E Easter Ave • Centennial, Colorado 80112

Telephone: (303) 794-8833 • Fax: (303) 730-1220

Date: 4 MARCH 2014

**Blackeagle Energy**

JMC Instruments, Inc. certifies that the listed one (1) instruments were calibrated on equipment which is traceable to the National Institute of Standards and Testing (N.I.S.T.). The standards have been compared to the standard of the State of Colorado. See certificate #08-009B issued by the State of Colorado. The equipment used for certification is serial number 1GA44774.

Calibration performed on work order number 3782

By: Warren Johnston

A handwritten signature in black ink, appearing to read 'Warren Johnston', is written over a horizontal line.

Description: DEADWEIGHT REFINERY SUPPLY

CN 35265-1

SN 6153

50 TO 3045 PSIG

PISTON ASSEMBLY PLUS 17 WEIGHTS

2 WEIGHTS ARE FROM SN 6280 BUT ARE CORRECT VALUE FOR THIS INSTRUMENT

(10 PSIG & 2 PSIG) 5 PSIG WEIGHT IS MISSING

# Cross Country Pipeline Supply CO. Inc

Sales and Service

2251 Rifle Street - Aurora, Colorado 80011

Phone 303.361.6797 Fax 303.361.6836

## NIST CALIBRATION DATA

Model Number	Serial Number	Customer	Range	Accuracy
265	8740	BLACK EAGLE	3000# - 150F	1/2%
Work Performed:		Calibration: Output/Reading	Results: Pressure	
Calibrate to Mfg. Spec.		0 PSI	0 PSI	
		600 PSI	600 PSI	
		1200 PSI	1200 PSI	
		1800 PSI	1800 PSI	
		2400 PSI	2400 PSI	
		3000 PSI	3000 PSI	
		33 Deg	33 DEG	
		60 DEG	60 DEG	
		110 DEG	110 DEG	
148 DEG	148 DEG			
PO Number		Sales Order Number	Date of Test	
RECALIBRATE		CIRTIIFIED	4/9/2014 9:17:53 AM	

Remarks:

--

## Standard Used:

Manufacturer	Model	Instrument	Calibration Date	Certification #
Perma-Cal	101FTM15B21	Pressure Gauge	07-18-2013	08-009B
Tech Instrumentation	TM99A	Thermometer	07-22-2013	48225

Mike L.

Signature





## OPERATIONS, MAINTENANCE AND EMERGENCIES MANUAL

## HYDROSTATIC TEST FLUID DATA

Test Section No. <b>Oscar Phase 1</b>	County <b>Weld</b>	Line <b>Oscar Phase 1 8'</b>	Test Date <b>4-27-14</b>
Permit No. (if required) <b>N/A</b>	Company Rep. <b>N/A</b>	Water Source <b>Non-Potable</b>	Water Depository <b>Gutterson Ranch</b>
Water Source <b>Gutterson Ranch</b>		Water Depository <b>Gutterson Ranch</b>	

WITHDRAWAL					DISCHARGE				
Date	Section	TWP	Range	County	Date	Section	TWP	Range	County
<b>4-24-14</b>				<b>Weld</b>	<b>4-29-14</b>				<b>weld</b>

Total Volume (gallons): **41,500**

## WATER QUALITY

	PPM		PH	Dissolved Solids	Oil & Grease	Fecal Coliform	Turbidity	Nitrate (NO)
	Silt	Saline						
Withdrawal	<b>- 0 -</b>	<b>- 0 -</b>			<b>- 0 -</b>	<b>- 0 -</b>	<b>CLEAR</b>	<b>- 0 -</b>
Discharge								

Test water at time of discharge meets the qualifications set forth in the air, water and solid waste regulations of \_\_\_\_\_

Fill Water Temperature (°F) **55**

## SIGNATURES

Test Technician <b>Scott Mulley</b>	Testing Company <b>Black Eagle</b>	Date <b>4-28-14</b>
Company Representative <b>Leonid Kolten</b>	Title <b>Chief Inspector</b>	Date <b>4-28-14</b>



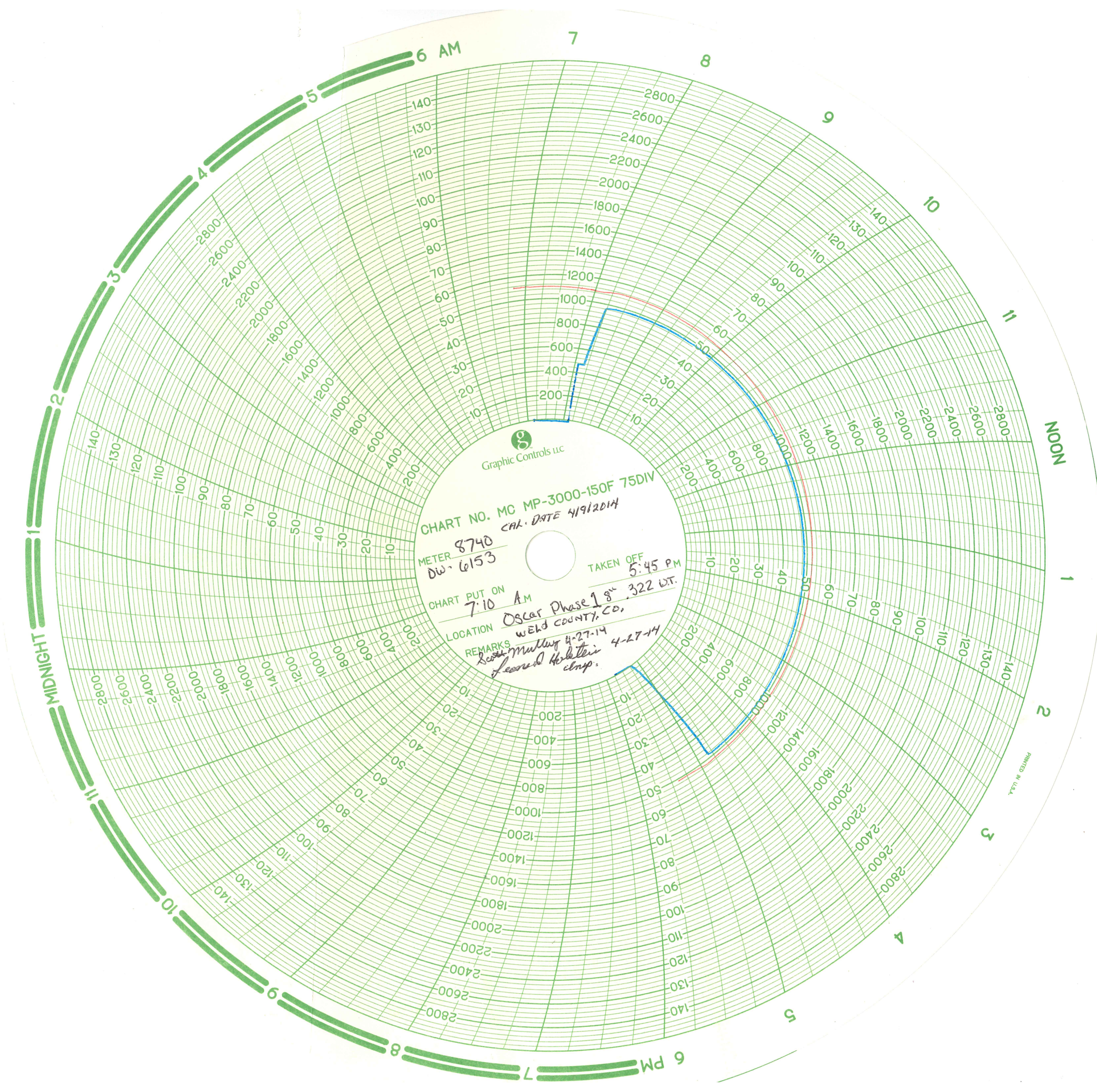
# PIPELINE TEST LOG

Line Name <b>Oscar Phase 1 8"</b>		Begin Station <b>0+00</b>	Page
		End Station <b>3+24</b>	of
Time Begin Test <b>7:10 AM</b>	Time End Test <b>5:45 PM</b>		

[illegible]

Test Technician <i>Scott McKinley</i>	Test Technician Company <i>Black Eagle</i>	Date <i>4-27-14</i>
Owner/Representative <i>Leonard Halseton</i>	Title <i>Chief Inspector</i>	Date <i>4-27-14</i>







OSCAR PHASE 1  
18501 : 8" 322 WT. API-56 X-56 ERW  
TEST STATION - HIGH POINT 0+50 HORIZONTAL ELEV. 4928.1  
TEST STATION - LOW POINT 185+01 HORIZONTAL ELEV. 4827.1  
TEST PRESS. MAX 980 PSI AT STATION 0+50  
TESTED ALL PIPING FROM 2" 300# FLANGE LACT UNIT MAINLINE PUMP.  
7 STA. 3+24 8" 600# VALVE  
THIS TEST DID NOT INCLUDE LACT UNIT LOW PRESS #150 SERIES PIPING  
" " " METERING SKID TAMPA NORTH (FUTURE TEST) (FUTURE TEST)