



# Kerr-McGee Oil & Gas Onshore LP

A subsidiary of Anadarko Petroleum Corporation

1099 18<sup>th</sup> Street  
Denver, CO 80202  
720-929-6000

August 9, 2019

Jeff Robbins  
Director, Colorado Oil and Gas Conservation Commission  
Department of Natural Resources  
The Chancery Building  
1120 Lincoln Street, Suite 801  
Denver, CO 80203

Re: **30 Day Certification Letter - 318A.e**  
FARLEY 23-2HZ (Doc No. 402135624)  
Township 3 North, Range 66 West  
Section 23: SW/4SW/4  
Unit Acreage: 400 Acres  
Proposed Spacing Unit:  
03N-66W-22: SESE;  
03N-66W-23: SWSW;  
03N-66W-26: W2W2;  
03N-66W-27: E2E2;  
Weld County, Colorado

Dear Director Robbins:

Kerr McGee Oil and Gas Onshore LP ("KMG") hereby certifies that KMG owns one hundred percent (100%) of the leasehold interest in the mineral rights in the proposed spacing unit. KMG hereby respectfully requests approval of this boundary well.

If you have any questions or issues regarding this permit, please contact Cheryl Light at (720) 929-6461.

Very truly yours,

**KERR-McGEE OIL AND GAS ONSHORE LP**

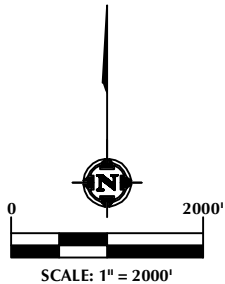
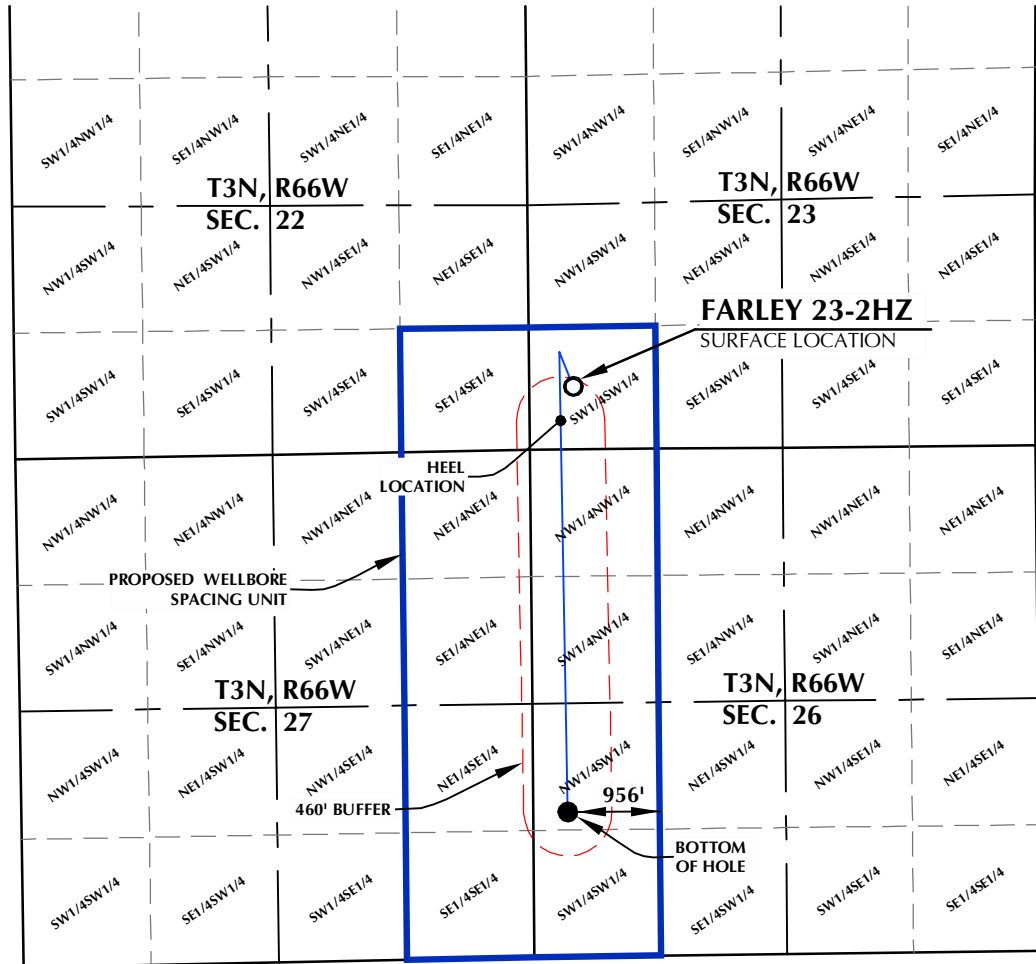
A handwritten signature in blue ink that reads 'Cheryl Light'.

Cheryl Light  
Staff Regulatory Analyst

# FARLEY 23-2HZ WELLBORE SPACING UNIT

DISTANCE FROM COMPLETED  
PORTION OF WELLBORE TO  
NEAREST UNIT BOUNDARY= 956'

SURFACE LOCATION: NAD 83  
GROUND ELEVATION= 4940.1'  
LATITUDE= 40.205260°  
LONGITUDE= -104.752142°  
LATITUDE= 40°12'18.938"  
LONGITUDE= -104°45'07.710"  
HEEL LOCATION: NAD 83  
LATITUDE= 40.204284°  
LONGITUDE= -104.752630°  
LATITUDE= 40°12'15.423"  
LONGITUDE= -104°45'09.469"  
BOTTOM HOLE LOCATION: NAD 83  
LATITUDE= 40.193099°  
LONGITUDE= -104.752481°  
LATITUDE= 40°11'35.156"  
LONGITUDE= -104°45'08.932"



## NOTES:

1. DRAWING LATITUDE AND LONGITUDE COORDINATES ARE NAD 83 (2011)(EPOCH:2010).
2. ELEVATION BASED ON NAVD88 (GEOID12B).
3. BASIS OF BEARING DERIVED FROM COLORADO COORDINATE SYSTEM OF 1983 NORTH ZONE.
4. ALL MEASURED DISTANCES ARE GRID.  
COMBINED SCALE FACTOR: .99972399 CALCULATED FROM THE SW. CORNER OF SECTION 23, T3N, R66W.

## WELL PAD - FARLEY 34-23HZ

FARLEY 23-2HZ  
WELLBORE SPACING UNIT  
656' FSL & 459' FWL SWSW (SURFACE)  
300' FSL & 322' FWL SWSW (HEEL)  
LOCATED IN SECTION 23  
1508' FSL & 360' FWL NWSW (BOTTOM)  
LOCATED IN SECTION 26  
T3N, R66W, 6TH P.M.  
WELD COUNTY, COLORADO

**Kerr-McGee Oil &  
Gas Onshore L.P.**  
1099 18th Street  
Denver, Colorado 80202



## CONSULTING, LLC

SHERIDAN OFFICE  
1095 Saberton Avenue  
Sheridan, Wyoming 82801  
Phone 307-674-0609

LOVELAND OFFICE  
6706 North Franklin Avenue  
Loveland, Colorado 80538  
Phone 970-776-4331

DRAFTED BY:	LMO	CHECKED BY:	RKF
DATE DRAFTED:	10/16/18	DATE SURVEYED:	9/26/18
REVISED:	8/6/19	FILE NAME:	18-102